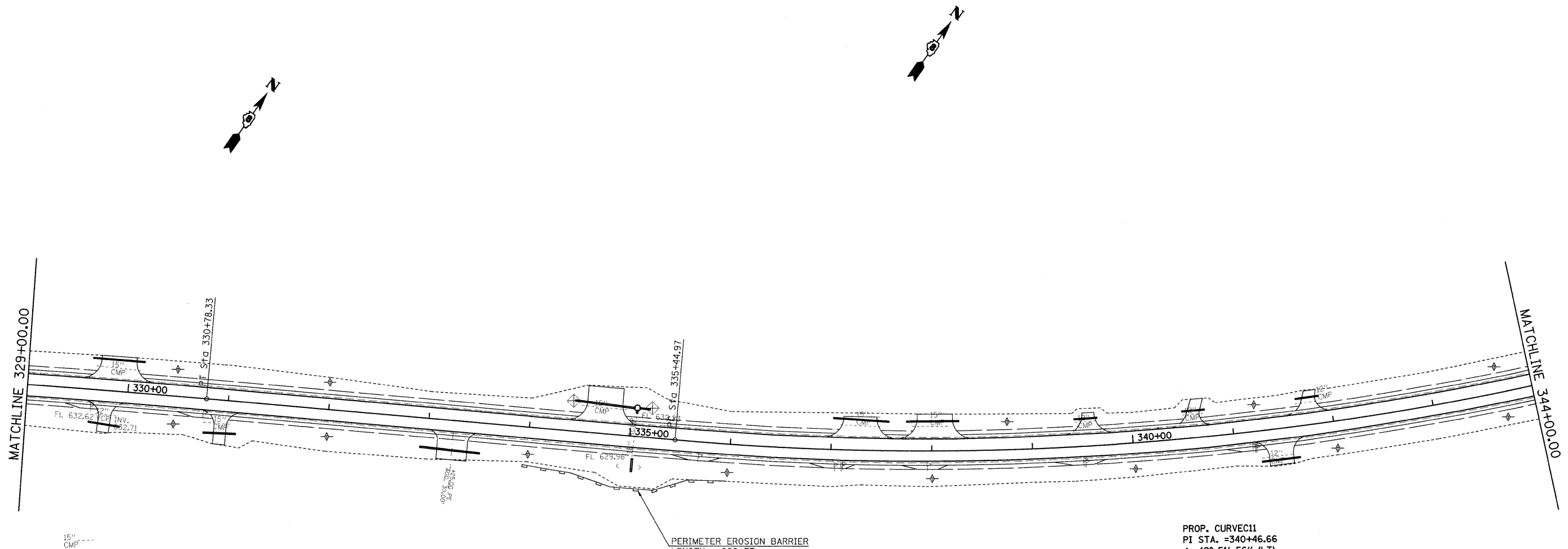
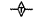




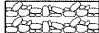



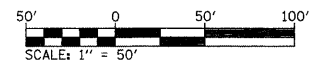
F.A.P. RTE.	SECTION	COUNTY	TOTAL SHEETS	SHEET NO.
809	(133,134)RS-4,135RS-5	ST. CLAIR, MONROE	252	103
STA. 329+00		TO STA. 344+00		
FED. ROAD DIST. NO. _____		ILLINOIS FED. AID PROJECT		



PROP. CURVEC11  
 PI STA. =340+46.66  
 $\Delta$  =19° 51' 56" (LT)  
 D =2° 00' 00"  
 R =2,864.90'  
 T =501.69'  
 L =993.32'  
 E =43.60'  
 e = ----  
 T.R. = ----  
 S.E. RUN = ----  
 P.C. STA. =335+44.97  
 P.T. STA. =345+38.28

**LEGEND**

-  TEMPORARY DITCH CHECK- ROLLED EXCELSIOR, SILT WEDGES/PANELS
-  TEMPORARY DITCH CHECK- AGGREGATE
-  EROSION CONTROL BLANKET
-  PERIMETER EROSION BARRIER- SILT FILTER FENCE OR OTHER AS APPROVED BY THE ENGINEER
-  INLET AND PIPE PROTECTION
-  STONE DUMPED RIPRAP, CLASS A3
-  STONE RIPRAP, CLASS A5 WITH FILTER FABRIC



REVISIONS	
NAME	DATE

ILLINOIS DEPARTMENT OF TRANSPORTATION  
**EROSION CONTROL PLAN**  
 FAP ROUTE 809 (IL RTE. 158)  
 SECTION (133, 134)RS-4, 135RS-5  
 ST. CLAIR AND MONROE COUNTY  
 SCALE: VERT. \_\_\_\_\_  
 HORIZ. \_\_\_\_\_  
 DATE \_\_\_\_\_ DRAWN BY \_\_\_\_\_  
 CHECKED BY \_\_\_\_\_

PLOT DATE = #DATE#  
 FILE NAME = #FILE#  
 PLOT SCALE = #SCALE#  
 USER NAME = #USER#