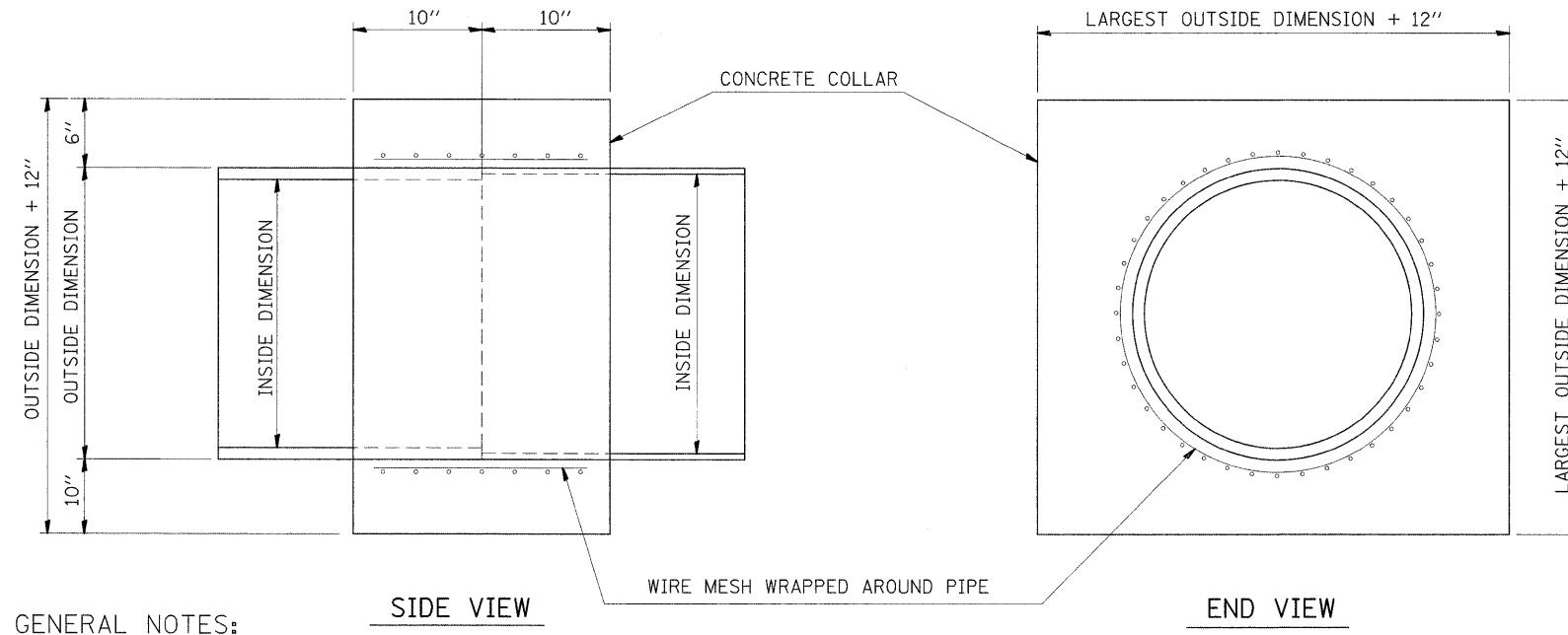


F.A.P. RTE.	SECTION	COUNTY	TOTAL SHEETS	SHEET NO.
809	(133,134RS-4,135RS-5)	ST. CLAIR, MONROE	252	111
STA. _____		TO STA. _____		
FED. ROAD DIST. NO. _____		ILLINOIS FED. AID PROJECT		

PLAN	SURVEYED	DATE
NOTE BOOK	ALIGNED	
NO. _____	BY _____	
	BY _____	
	BY _____	
	BY _____	
	BY _____	
	BY _____	
	BY _____	
	BY _____	



GENERAL NOTES:

1. CLASS SI CONCRETE SHALL BE USED THROUGHOUT.
2. WHEN CONCRETE COLLARS ARE USED TO CONNECT PIPES OF DIFFERENT OUTSIDE DIMENSIONS, THE CONCRETE COLLAR SHALL BE FORMED USING THE LARGEST OUTSIDE DIMENSION. (SEE END VIEW)
3. THE WIRE MESH SHALL WEIGHT NOT LESS THAN 54 POUNDS PER 100 SQ. FT.
4. CONCRETE COLLARS WILL BE PAID FOR AT THE CONTRACT UNIT PRICE, EACH, FOR CONCRETE COLLARS INCLUDING ALL MATERIAL AND LABOR SPECIFIED TO COMPLETE THE WORK IN PLACE.

CULVERTS

- STA. 143+88.52 LT & RT
- STA. 157+74.21 LT & RT
- STA. 160+74.42 LT & RT
- STA. 242+98.67 LT & RT
- STA. 335+04.51 LT & RT

REVISIONS	
NAME	DATE

CONCRETE COLLAR DETAIL

FAP ROUTE 809 (IL 158)
SECTION (133, 134)RS-4, 135RS-5
MONROE & ST. CLAIR COUNTY