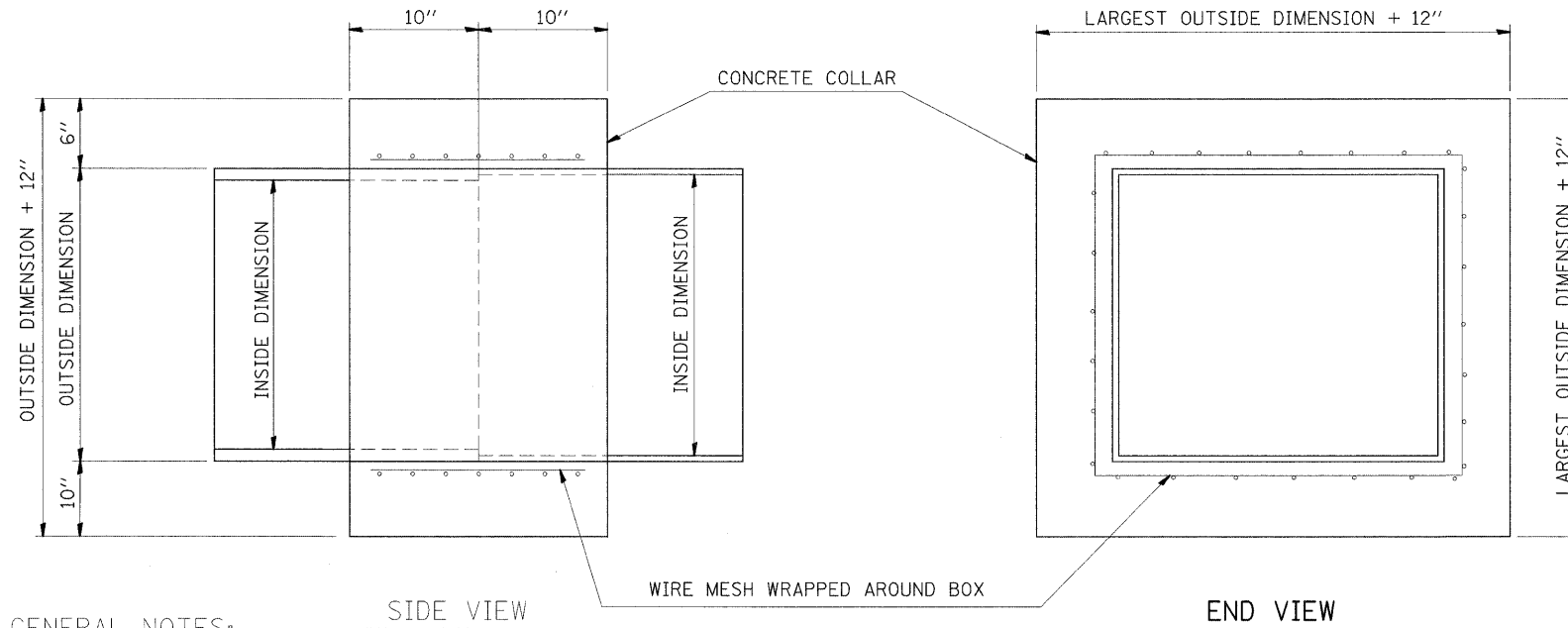


F.A.P. RTE.	SECTION	COUNTY	TOTAL SHEETS	SHEET NO.
809	(133,134RS-4,135RS-5)	ST. CLAIR, MONROE	252	112
STA. _____		TO STA. _____		
FED. ROAD DIST. NO. _ ILLINOIS FED. AID PROJECT				

PLAN	SURVEYED	BY	DATE
NOTE BOOK	PLANNED		
NO. _____	CHECKED		
	BY		
	DATE		



GENERAL NOTES:

1. CLASS SI CONCRETE SHALL BE USED THROUGHOUT.
2. WHEN CONCRETE COLLARS ARE USED TO CONNECT BOXES OF DIFFERENT OUTSIDE DIMENSIONS, THE CONCRETE COLLAR SHALL BE FORMED USING THE LARGEST OUTSIDE DIMENSION. (SEE END VIEW)
3. THE WIRE MESH SHALL WEIGHT NOT LESS THAN 54 POUNDS PER 100 SQ. FT.
4. CONCRETE COLLARS WILL BE PAID FOR AT THE CONTRACT UNIT PRICE, EACH, FOR CONCRETE COLLARS INCLUDING ALL MATERIAL AND LABOR SPECIFIED TO COMPLETE THE WORK IN PLACE.

CULVERTS

- STA. 147+23.28 LT & RT
- STA. 172+08.05 LT & RT
- STA. 199+83.40 LT & RT
- STA. 204+79.51 LT & RT
- STA. 223+37.02 RT
- STA. 264+59.24 LT & RT
- STA. 293+59.62 LT & RT
- STA. 304+13.30 LT & RT
- STA. 325+49.29 LT & RT
- STA. 365+61.80 LT & RT

REVISIONS	
NAME	DATE

**CONCRETE COLLAR DETAIL**

FAP ROUTE 809 (IL 158)  
SECTION (133, 134)RS-4, 135RS-5  
MONROE & ST. CLAIR COUNTY

DRAWN BY: