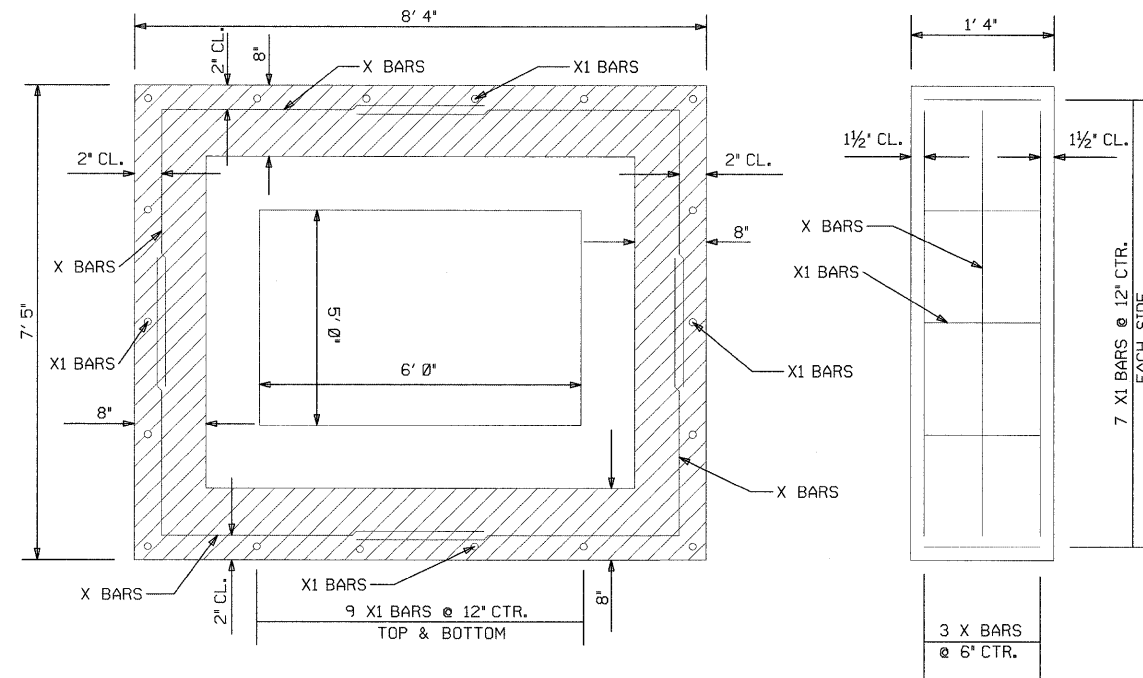
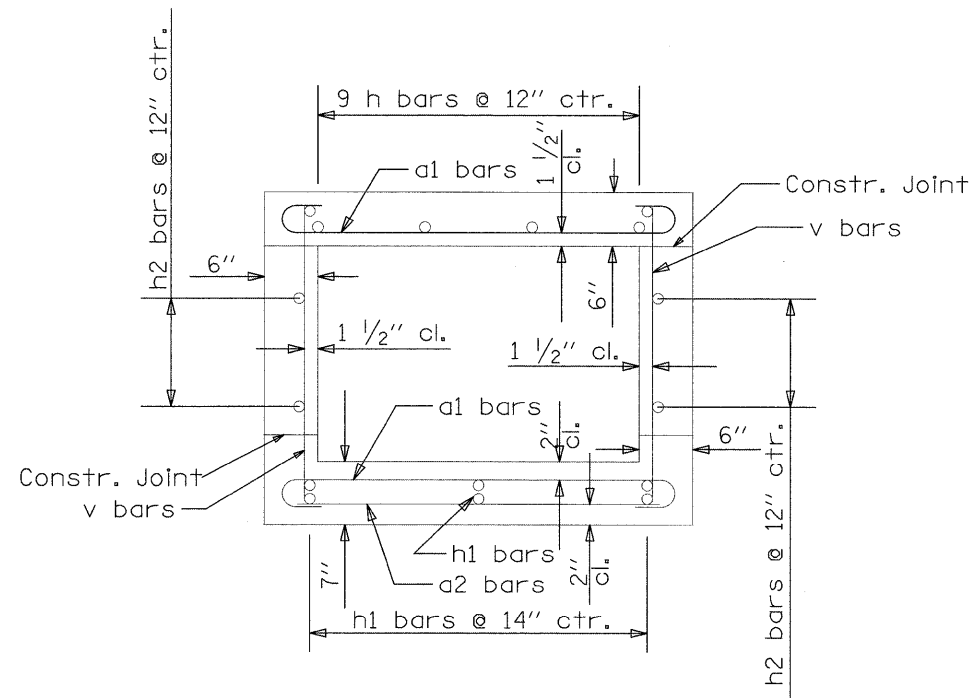
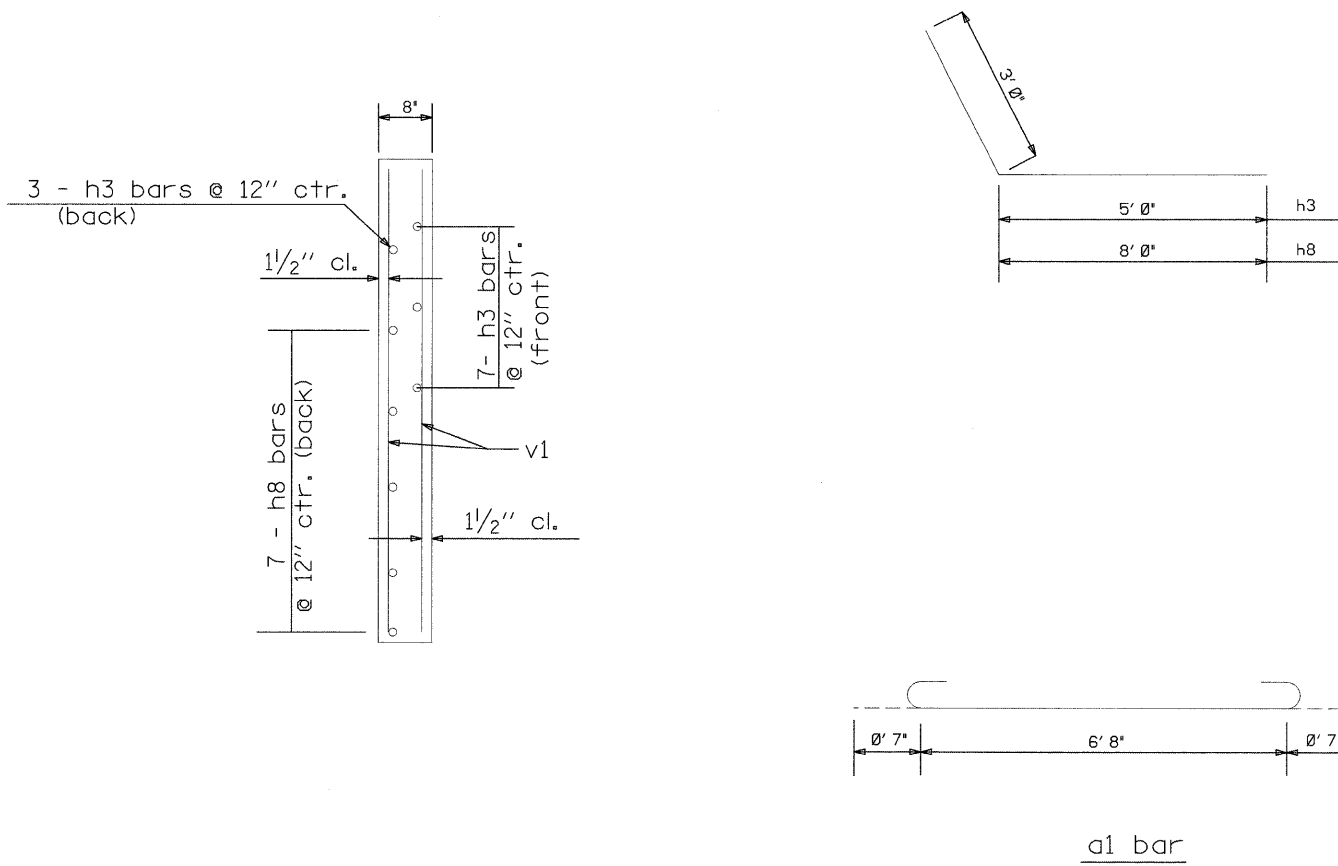


F.A.P. RTE.	SECTION	COUNTY	TOTAL SHEETS	SHEET NO.
809	133,134RS-4,135RS-5	ST. CLAIR, MONROE	252	116
STA.		TO STA.		
FED. ROAD DIST. NO.		ILLINOIS FED. AID PROJECT		

NOTE
Number of h bars in top slab includes two extra bars as shown



CAST IN PLACE CONNECTION COLLAR



BILL OF MATERIAL				
Type	No.	Size	Length	Lbs
a1	32	#5	7' 8"	256.0
a2	5	#4	6' 6"	21.7
h	9	#5	7' 8"	72.0
h1	12	#4	7' 8"	61.5
h2	10	#5	7' 6"	72.8
d	7	#4	4' 6"	21.0
h3	20	#6	8' 0"	240.3
h4	2	#4	6' 6"	8.7
h8	14	#6	11' 0"	231.3
v	28	#4	5' 7"	104.4
v1	8	#4	8' 0"	42.8
x	12	#4	7' 8"	61.5
x1	32	#4	1' 0"	21.4
CONCRETE	C.Y.			6.0
REINF. BARS	LBS.			1,215.4
CONC. COLLAR	EACH			1

REVISIONS	
NAME	DATE

ILLINOIS DEPARTMENT OF TRANSPORTATION
CAST-IN-PLACE
BOX CULVERT EXTENSIONS
STA. 225+76.92
LEFT SIDE ONLY
FAP ROUTE 809 (IL 158)
SECTION (133, 134)RS-4, 135RS-5
MONROE & ST. CLAIR COUNTY

DRAWN BY:
PLOT DATE: _DATE-TIME_

PLAN	SURVEYED	BY	DATE
	NOTED		
	CHECKED		
	DATE		

SCALE:
DATE-TIME:
JOB-SPEC:
REF: