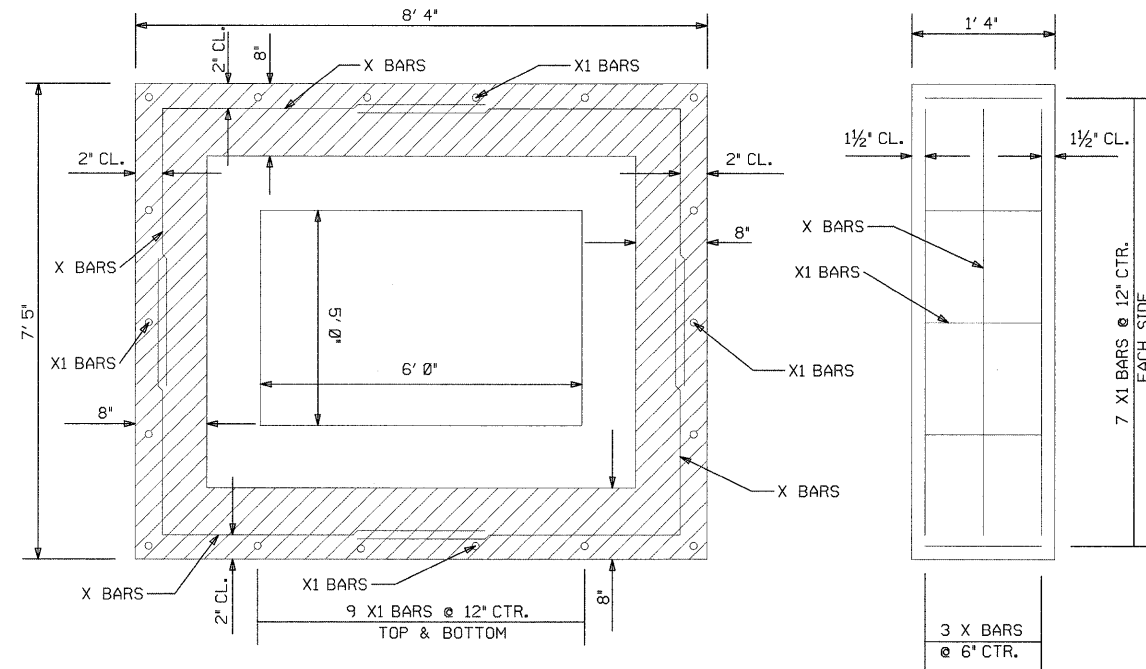
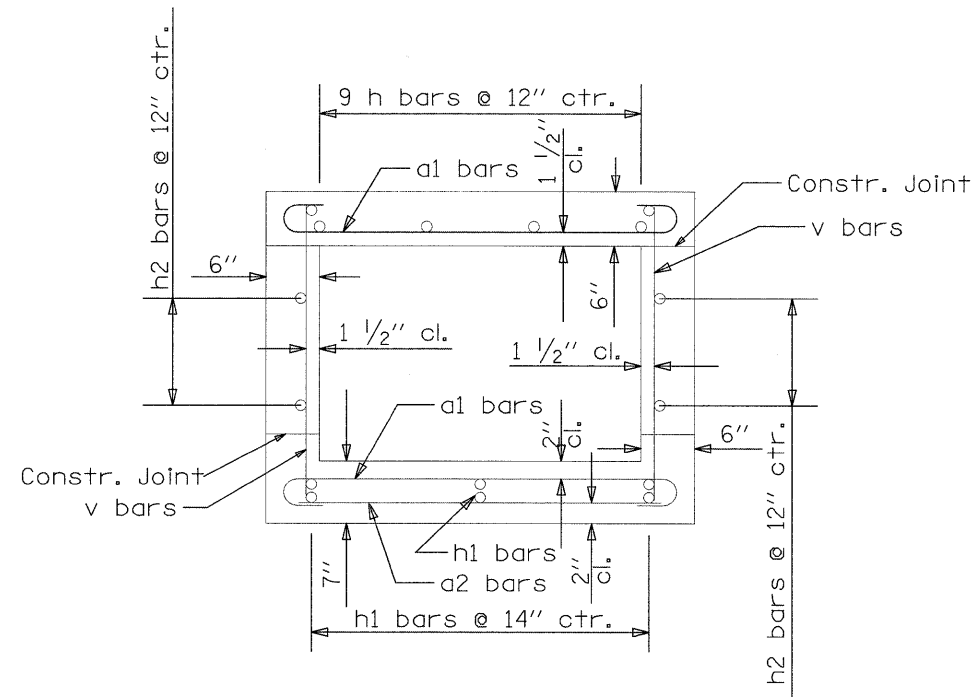
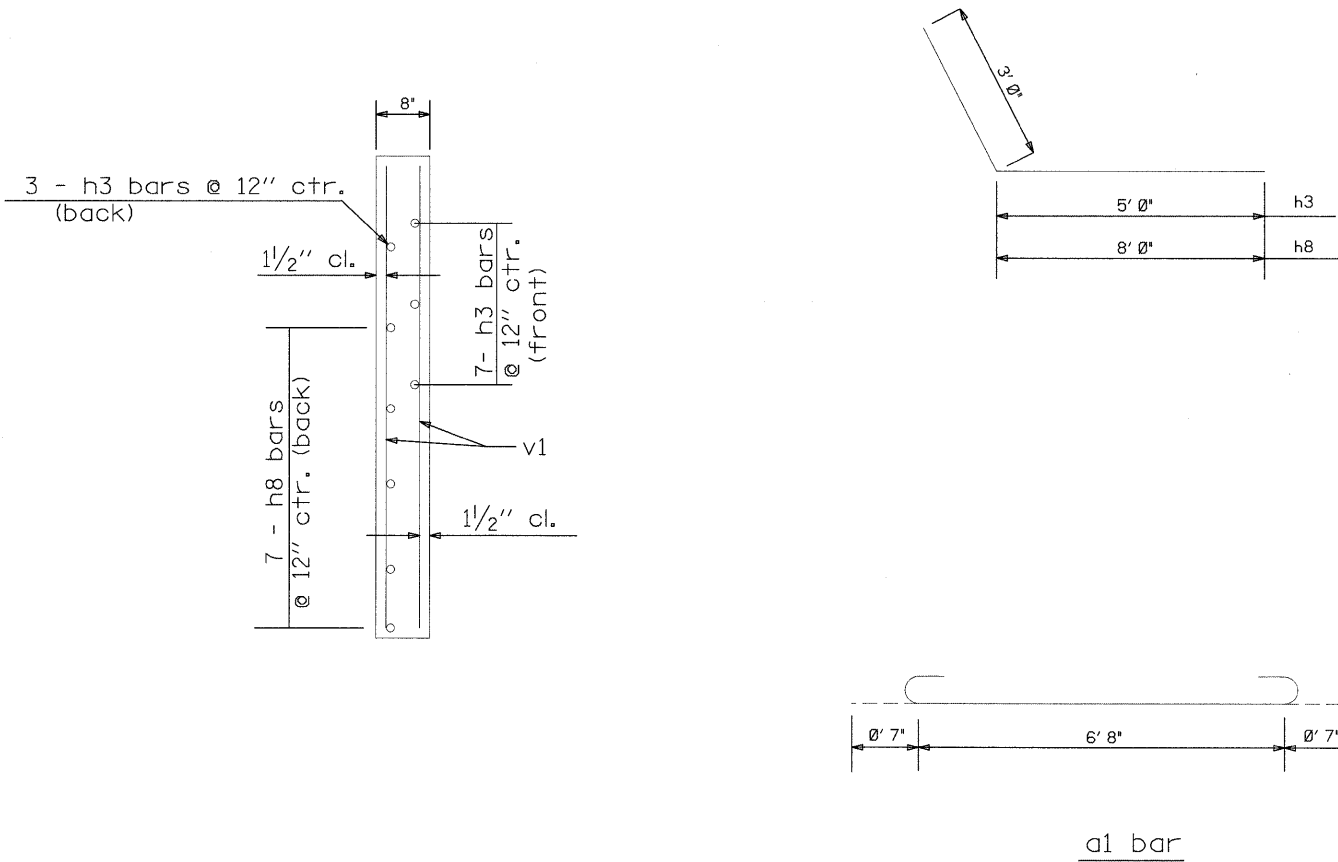


| F.A.P. RTE. | SECTION | COUNTY | TOTAL SHEETS | SHEET NO. |
|---------------------|-----------------------|---------------------------|--------------|-----------|
| 809 | (133,134RS-4,135RS-5) | ST. CLAIR, MONROE | 252 | 117 |
| STA. | | TO STA. | | |
| FED. ROAD DIST. NO. | | ILLINOIS FED. AID PROJECT | | |

NOTE
Number of h bars in top slab includes two extra bars as shown



CAST IN PLACE CONNECTION COLLAR



| BILL OF MATERIAL | | | | |
|------------------|------|------|--------|--------|
| Type | No. | Size | Length | Lbs |
| a1 | 48 | #5 | 7' 8" | 245.9 |
| a2 | 8 | #4 | 6' 6" | 34.7 |
| h | 9 | #5 | 13' 6" | 126.7 |
| h1 | 12 | #4 | 13' 6" | 108.2 |
| h2 | 10 | #5 | 13' 4" | 89.1 |
| d | 7 | #4 | 4' 6" | 21.0 |
| h3 | 20 | #6 | 8' 0" | 240.3 |
| h4 | 2 | #4 | 6' 6" | 8.7 |
| h8 | 14 | #6 | 11' 0" | 231.3 |
| v | 40 | #4 | 5' 7" | 149.2 |
| v1 | 8 | #4 | 8' 0" | 42.8 |
| x | 12 | #4 | 7' 8" | 61.5 |
| x1 | 32 | #4 | 1' 0" | 21.4 |
| CONCRETE | C.Y. | | | 8.6 |
| REINF. BARS | LBS. | | | 1380.8 |
| CONC. COLLAR | EACH | | | 1 |

| REVISIONS | |
|-----------|------|
| NAME | DATE |
| | |
| | |
| | |
| | |
| | |

ILLINOIS DEPARTMENT OF TRANSPORTATION
CAST-IN-PLACE
BOX CULVERT EXTENSIONS
STA. 225+76.92
RIGHT SIDE ONLY
FAP ROUTE 809 (IL 158)
SECTION (133, 134)RS-4, 135RS-5
MONROE & ST. CLAIR COUNTY
DRAWN BY:

| | |
|---------------------|------|
| PLAN | DATE |
| BY | |
| CHECKED | |
| DATE | |
| NO. OF WAYS CHECKED | |
| NO. OF WAYS CHECKED | |
| NO. OF WAYS CHECKED | |
| NO. OF WAYS CHECKED | |