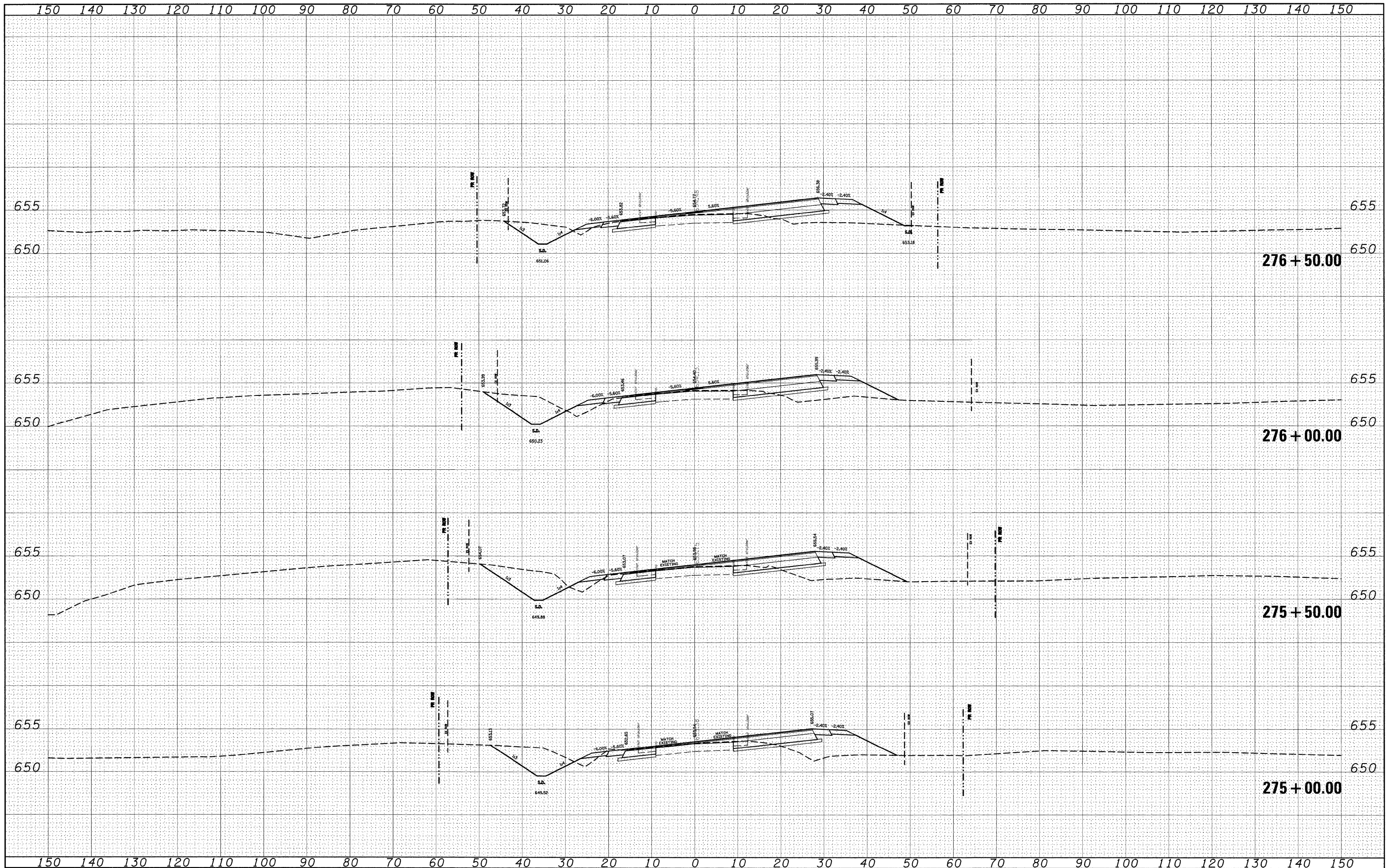


|               |  |
|---------------|--|
| DATE          |  |
| BY            |  |
| REVISIONS     |  |
| PLOTTED       |  |
| TEMPLATE      |  |
| AREAS CHECKED |  |
| FINAL SURVEY  |  |
| NOTE BOOK     |  |
| NO.           |  |

|                 |  |
|-----------------|--|
| DATE            |  |
| BY              |  |
| REVISIONS       |  |
| PLOTTED         |  |
| TEMPLATE        |  |
| AREAS CHECKED   |  |
| ORIGINAL SURVEY |  |
| NOTE BOOK       |  |
| NO.             |  |



FILE NAME = c:\pwork\pwidot\dintelmanjn\dms51225\ssht01802h.dgn

USER NAME = dintelmanjn  
 PLT SCALE = 10.0000' / IN.  
 PLOT DATE = 12/16/2009

DESIGNED - ---  
 DRAWN - ---  
 CHECKED - ---  
 DATE - ---

REVISED - ---  
 REVISED - ---  
 REVISED - ---  
 REVISED - ---

**STATE OF ILLINOIS  
 DEPARTMENT OF TRANSPORTATION**

**CROSS SECTIONS**

SCALE: \_\_\_\_\_ SHEET NO. \_\_\_ OF \_\_\_ SHEETS STA. 275+00.00 TO STA. 276+50.00

|   |                       |                   |              |           |
|---|-----------------------|-------------------|--------------|-----------|
| F.A.P. RTE.                                   | SECTION               | COUNTY            | TOTAL SHEETS | SHEET NO. |
| 809   | (133,134)RS-4,135RS-5 | ST. CLAIR, MONROE | 252          | 186       |
| CONTRACT NO. 76408                            |                       |                   |              |           |
| FED. ROAD DIST. NO. ILLINOIS FED. AID PROJECT |                       |                   |              |           |