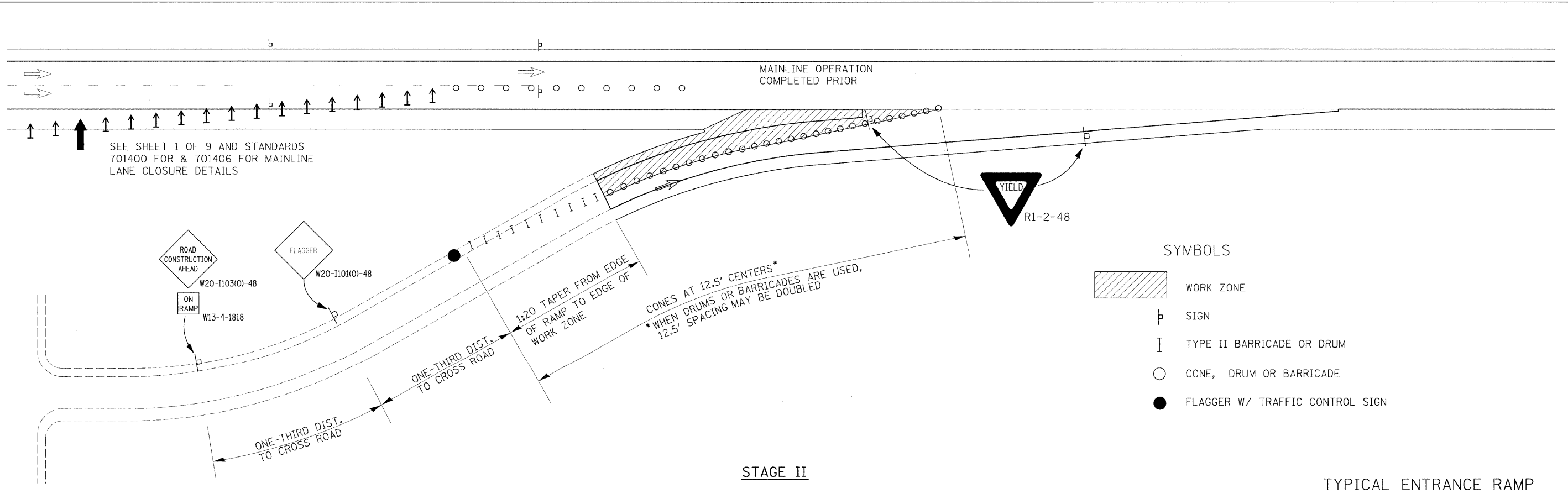

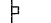
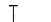




NOTES SEE STANDARD 701411 (APPLICATIONS NO. 1 & 2) FOR SIGNING, TEMPORARY PAVEMENT MARKING AND CHANNELIZING DEVICE DETAILS.

THESE LANE CLOSURE DETAILS FOR DAYTIME OPERATIONS ONLY. ALL LANES SHALL BE OPEN TO REGULAR TRAFFIC DURING NIGHTTIME HOURS, WITH A MAXIMUM PAVEMENT HEIGHT DIFFERENTIAL OF 2" BETWEEN LANES OR BETWEEN LANES AND ADJACENT SHOULDER. WHILE PAVEMENT HEIGHT DIFFERENTIAL EXISTS, A PORTABLE CHANGEABLE MESSAGE SIGN SHALL BE PLACED AT THE DIRECTION OF THE ENGINEER WARNING OF UNEVEN PAVEMENT AHEAD.

MILLING AND 1st BINDER COURSE, OR 2nd BINDER COURSE AND SURFACE COURSE, MAY BE COMPLETED DURING ONE LANE CLOSURE SETUP IF ALL CAN BE COMPLETED DURING DAYLIGHT HOURS.



- SYMBOLS**
-  WORK ZONE
 -  SIGN
 -  TYPE II BARRICADE OR DRUM
 -  CONE, DRUM OR BARRICADE
 -  FLAGGER W/ TRAFFIC CONTROL SIGN

FILE NAME = C:\Program Files\Autodesk\AutoCAD 2009\Map\Inter-ful\PLT
 PLOT DRIVER = C:\Program Files\Autodesk\AutoCAD 2009\Map\Inter-ful\PLT
 PLOT SCALE = 100.0000' / 1" IN.
 PLOT DATE = 1/29/2009

FILE NAME = D876855-sh1-staging.dgn	USER NAME = Steve	DESIGNED - SCF	REVISED -	STATE OF ILLINOIS DEPARTMENT OF TRANSPORTATION	TRAFFIC CONTROL PLAN		F.A.I. RTE. 64	SECTION 82-(8,9,10)RS-3	COUNTY ST. CLAIR-CLINTON	TOTAL SHEETS 78	SHEET NO. 42	
PLOT SCALE = 100.0000' / 1" IN.	DATE - 12/12/08	DRAWN - SCF	REVISOR -		SCALE: 1"=50'	SHEET NO. 3 OF 9 SHEETS	STA. TO STA.	CONTRACT NO. 76855				
PLOT DATE = 1/29/2009	DATE - 12/12/08	CHECKED - TJO	REVISOR -		FED. ROAD DIST. NO. ILLINOIS FED. AID PROJECT							
GONZALEZ COMPANIES, LLC 618-222-2221 WWW.GONZALEZCOS.COM												