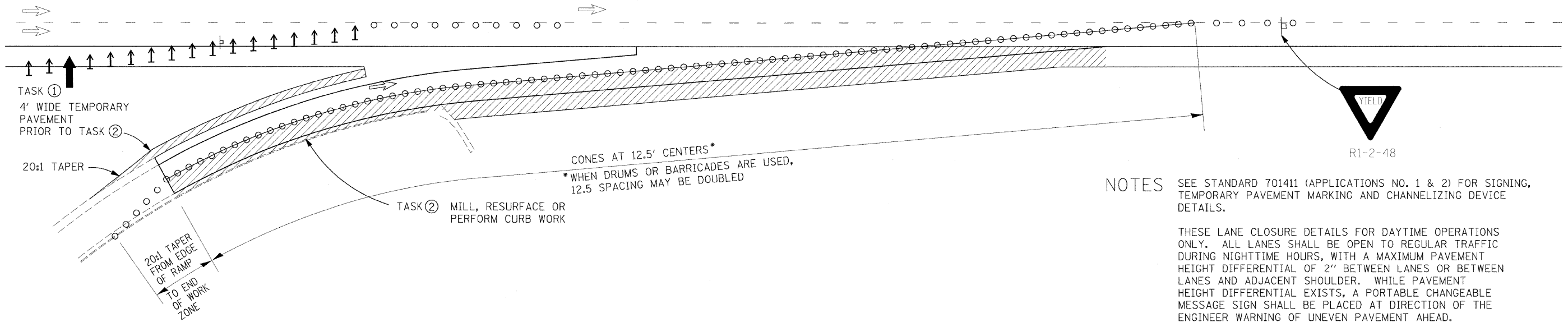


FAI ROUTE 64

SEE SHEET 1 OF 9 AND STANDARDS
701400 & 701406 FOR MAINLINE
LANE CLOSURE DETAILS

MAINLINE WORK COMPLETED PRIOR
(SEE STD. 701411 FOR RAMP TRAFFIC CONTROL
DURING MAINLINE OPERATIONS)



NOTES SEE STANDARD 701411 (APPLICATIONS NO. 1 & 2) FOR SIGNING,
TEMPORARY PAVEMENT MARKING AND CHANNELIZING DEVICE
DETAILS.

THESE LANE CLOSURE DETAILS FOR DAYTIME OPERATIONS
ONLY. ALL LANES SHALL BE OPEN TO REGULAR TRAFFIC
DURING NIGHTTIME HOURS, WITH A MAXIMUM PAVEMENT
HEIGHT DIFFERENTIAL OF 2" BETWEEN LANES OR BETWEEN
LANES AND ADJACENT SHOULDER. WHILE PAVEMENT
HEIGHT DIFFERENTIAL EXISTS, A PORTABLE CHANGEABLE
MESSAGE SIGN SHALL BE PLACED AT DIRECTION OF THE
ENGINEER WARNING OF UNEVEN PAVEMENT AHEAD.

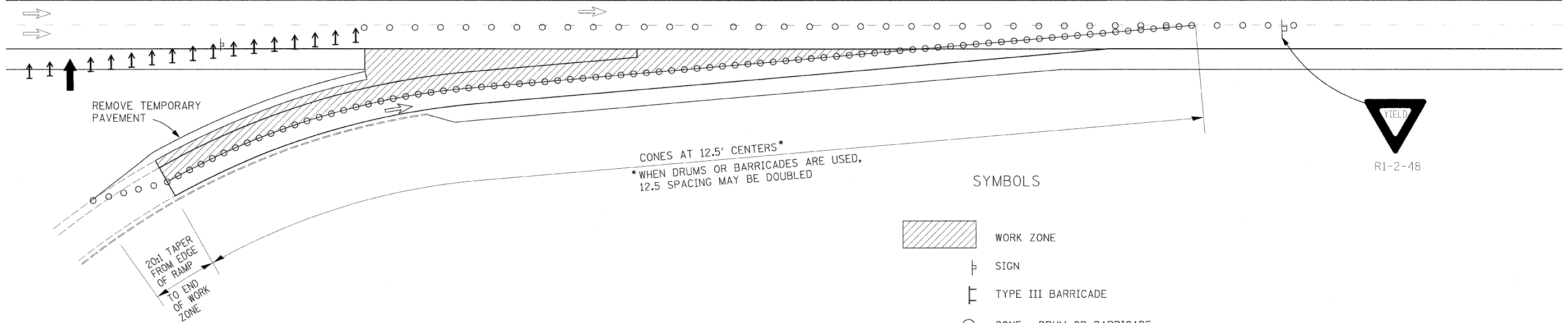
MILLING AND 1st BINDER COURSE, OR 2nd BINDER COURSE
AND SURFACE COURSE, MAY BE COMPLETED DURING ONE
LANE CLOSURE SETUP IF ALL CAN BE COMPLETED DURING
DAYLIGHT HOURS.

STAGE I

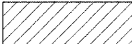




FAI ROUTE 64

SEE SHEET 1 OF 9 AND STANDARDS
701400 & 701406 FOR MAINLINE
LANE CLOSURE DETAILS

MAINLINE WORK COMPLETED PRIOR
(SEE STD. 701411 FOR RAMP TRAFFIC CONTROL
DURING MAINLINE OPERATIONS)



SYMBOLS

-  WORK ZONE
-  SIGN
-  TYPE III BARRICADE
-  CONE, DRUM OR BARRICADE
-  FLAGGER W/ TRAFFIC CONTROL SIGN

STAGE II

ENTRANCE RAMPS REST AREA

FILE NAME = D876885-shr-staging.dgn	USER NAME = Steve	DESIGNED - SCF	REVISED -
		DRAWN - SCF	REVISED -
		CHECKED - TJQ	REVISED -
		DATE - 12/12/08	REVISED -
PLOT SCALE = 1/2" = 50'		PLOT DATE = 1/29/2009	

STATE OF ILLINOIS
DEPARTMENT OF TRANSPORTATION

TRAFFIC CONTROL PLAN

SCALE: 1"=50' SHEET NO. 4 OF 9 SHEETS STA. TO STA.

F.A.I. RTE.	SECTION	COUNTY	TOTAL SHEETS	SHEET NO.
64	82-(8,9,10)RS-3	ST. CLAIR-CLINTON	78	43
CONTRACT NO. 76855				
FED. ROAD DIST. NO. ILLINOIS FED. AID PROJECT				

PLOT DRIVER = C:\Program Files\Bentley\MicroStation\System\plotdrv\inter-fujil.plt
 PEN TABLE = C:\Program Files\Bentley\MicroStation\System\pen.tbl