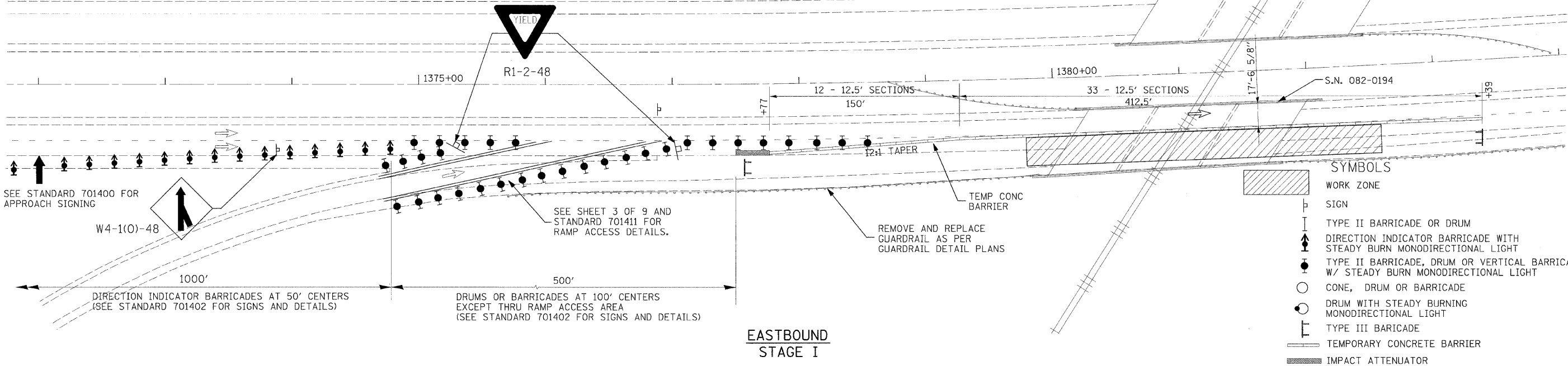
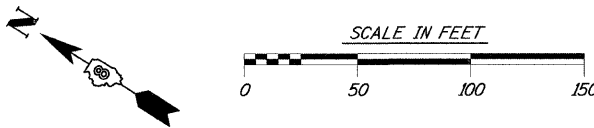


**NOTES**

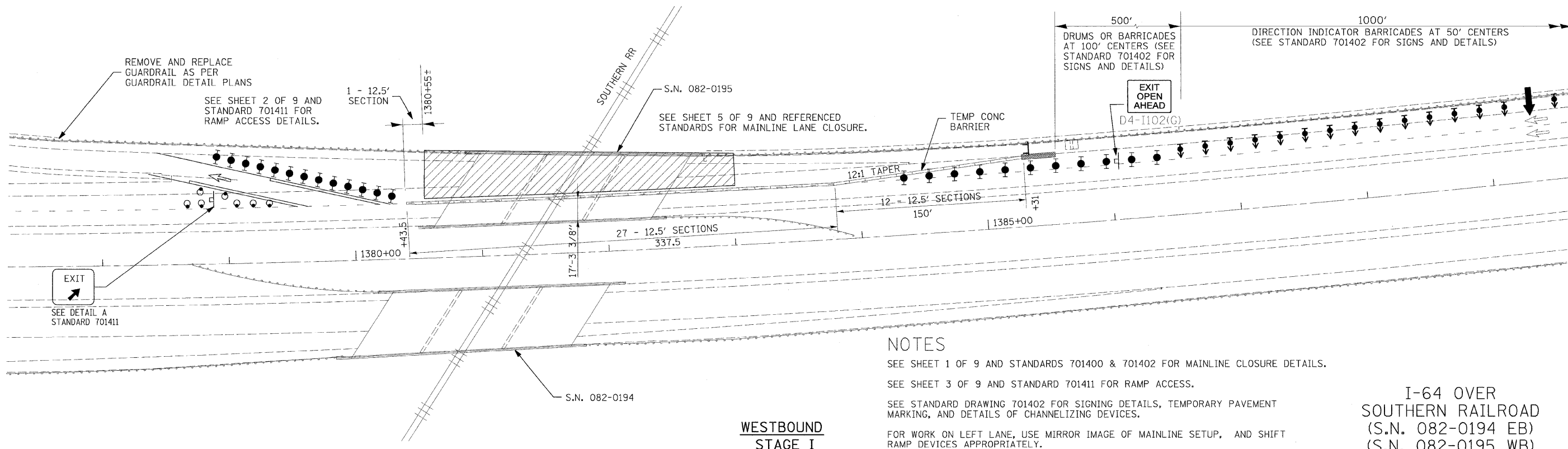
SEE SHEET 1 OF 9 AND STANDARDS 701400 & 701402 FOR MAINLINE CLOSURE DETAILS.  
 SEE SHEET 3 OF 9 AND STANDARD 701411 FOR RAMP ACCESS.  
 SEE STANDARD DRAWING 701402 FOR SIGNING DETAILS, TEMPORARY PAVEMENT MARKING, AND DETAILS OF CHANNELIZING DEVICES.  
 FOR WORK ON LEFT LANE, USE MIRROR IMAGE OF MAINLINE SETUP, AND SHIFT RAMP DEVICES APPROPRIATELY.



- SYMBOLS**
- WORK ZONE
  - SIGN
  - TYPE II BARRICADE OR DRUM
  - DIRECTION INDICATOR BARRICADE WITH STEADY BURN MONODIRECTIONAL LIGHT
  - TYPE II BARRICADE, DRUM OR VERTICAL BARRICADE W/ STEADY BURN MONODIRECTIONAL LIGHT
  - CONE, DRUM OR BARRICADE
  - DRUM WITH STEADY BURNING MONODIRECTIONAL LIGHT
  - TYPE III BARRICADE
  - TEMPORARY CONCRETE BARRIER
  - IMPACT ATTENUATOR

**EASTBOUND STAGE I**

SEE STANDARD 701400 FOR APPROACH SIGNING



**NOTES**

SEE SHEET 1 OF 9 AND STANDARDS 701400 & 701402 FOR MAINLINE CLOSURE DETAILS.  
 SEE SHEET 3 OF 9 AND STANDARD 701411 FOR RAMP ACCESS.  
 SEE STANDARD DRAWING 701402 FOR SIGNING DETAILS, TEMPORARY PAVEMENT MARKING, AND DETAILS OF CHANNELIZING DEVICES.  
 FOR WORK ON LEFT LANE, USE MIRROR IMAGE OF MAINLINE SETUP, AND SHIFT RAMP DEVICES APPROPRIATELY.

**WESTBOUND STAGE I**

**I-64 OVER SOUTHERN RAILROAD**  
 (S.N. 082-0194 EB)  
 (S.N. 082-0195 WB)

FILE NAME = D876855-sh1-staging.dgn	USER NAME = Steve	DESIGNED - SCF	REVISED -	<b>STATE OF ILLINOIS DEPARTMENT OF TRANSPORTATION</b>	<b>TRAFFIC CONTROL PLAN</b>		F.A.I. RTE. 64	SECTION 82-(8,9,10)RS-3	COUNTY ST. CLAIR-CLINTON	TOTAL SHEETS 78	SHEET NO. 45	
PLOT SCALE = 3/4" = 1' IN.	PLOT DATE = 1/29/2009	DRAWN - SCF	REVISED -		SCALE: 1" = 50'	SHEET NO. 6 OF 9 SHEETS	STA. TO STA.	CONTRACT NO. 76855				
		CHECKED - TJO	REVISED -		FED. ROAD DIST. NO. ILLINOIS FED. AID PROJECT							
		DATE - 12/12/08	REVISED -									

PLOT DRIVER = C:\Program Files\Bentley\MapSystems\temp\otdr\mcr\inter-fuj\1.PLT  
 PEN TABLE = C:\Program Files\Bentley\MapSystems\temp\otdr\mcr\inter-fuj\1-sub.tbl