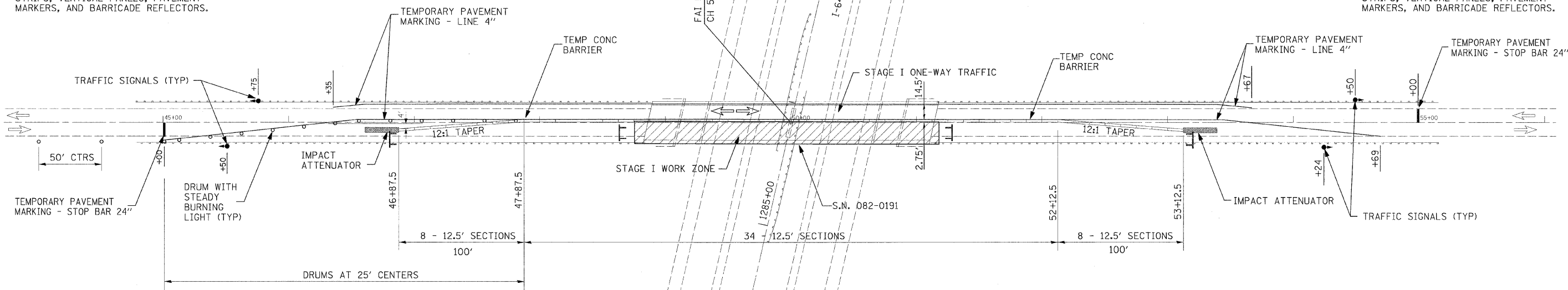
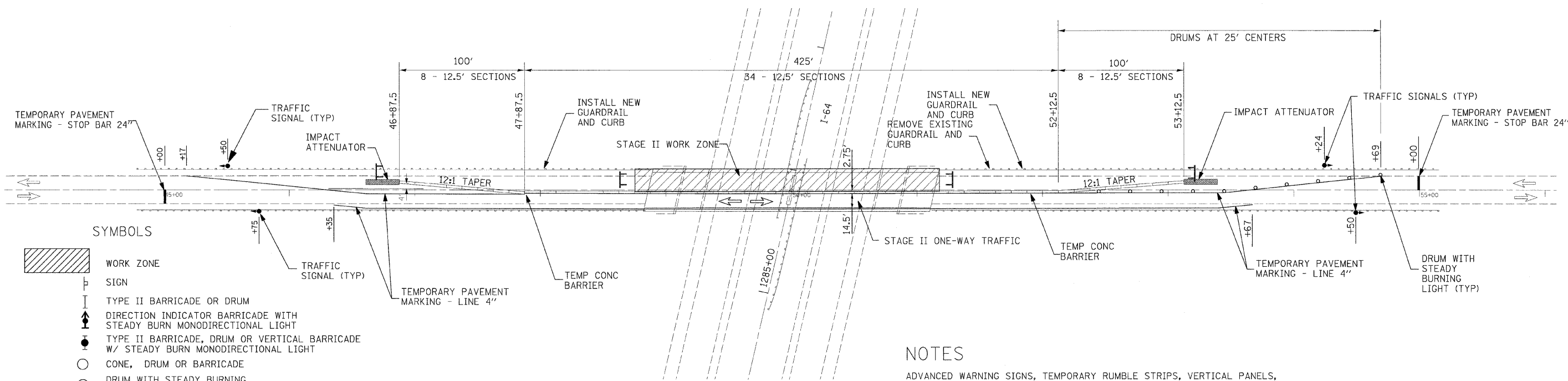


SEE STANDARD 701321 FOR ADVANCED WARNING SIGNS, TEMPORARY RUMBLE STRIPS, VERTICAL PANELS, PAVEMENT MARKERS, AND BARRICADE REFLECTORS.

SEE STANDARD 701321 FOR ADVANCED WARNING SIGNS, TEMPORARY RUMBLE STRIPS, VERTICAL PANELS, PAVEMENT MARKERS, AND BARRICADE REFLECTORS.



STAGE I



STAGE II

SYMBOLS

- WORK ZONE
- SIGN
- TYPE II BARRICADE OR DRUM
- DIRECTION INDICATOR BARRICADE WITH STEADY BURN MONODIRECTIONAL LIGHT
- TYPE II BARRICADE, DRUM OR VERTICAL BARRICADE W/ STEADY BURN MONODIRECTIONAL LIGHT
- CONE, DRUM OR BARRICADE
- DRUM WITH STEADY BURNING MONODIRECTIONAL LIGHT
- TYPE III BARRICADE
- TEMPORARY CONCRETE BARRIER
- IMPACT ATTENUATOR

NOTES

ADVANCED WARNING SIGNS, TEMPORARY RUMBLE STRIPS, VERTICAL PANELS, PAVEMENT MARKERS, AND BARRICADE REFLECTORS SHALL BE LOCATED IN ACCORDANCE WITH TRAFFIC CONTROL AND PROTECTION STANDARD 701321.

SEE SPECIAL PROVISIONS AND HIGHWAY STANDARD 701321 FOR ADDITIONAL INFORMATION.

C.H.50 (SUMMERFIELD ROAD)
OVER I-64
(S.N. 082-0191)

FILE NAME = D876855-sh1-staging.dgn	USER NAME = Steve	DESIGNED - SCF	REVISED -	STATE OF ILLINOIS DEPARTMENT OF TRANSPORTATION	TRAFFIC CONTROL PLAN		F.A.I. RTE. 64	SECTION 82-(8,9,10)RS-3	COUNTY ST. CLAIR-CLINTON	TOTAL SHEETS 78	SHEET NO. 47	
PLOT SCALE = 3/32" = 1' / IN.		DRAWN - SCF	REVISED -		SCALE: 1" = 50'	SHEET NO. 8 OF 9 SHEETS	STA. TO STA.	CONTRACT NO. 76855		ILLINOIS FED. AID PROJECT		
PLOT DATE = 1/29/2009		CHECKED - TJQ	REVISED -									
		DATE - 12/12/08	REVISED -									