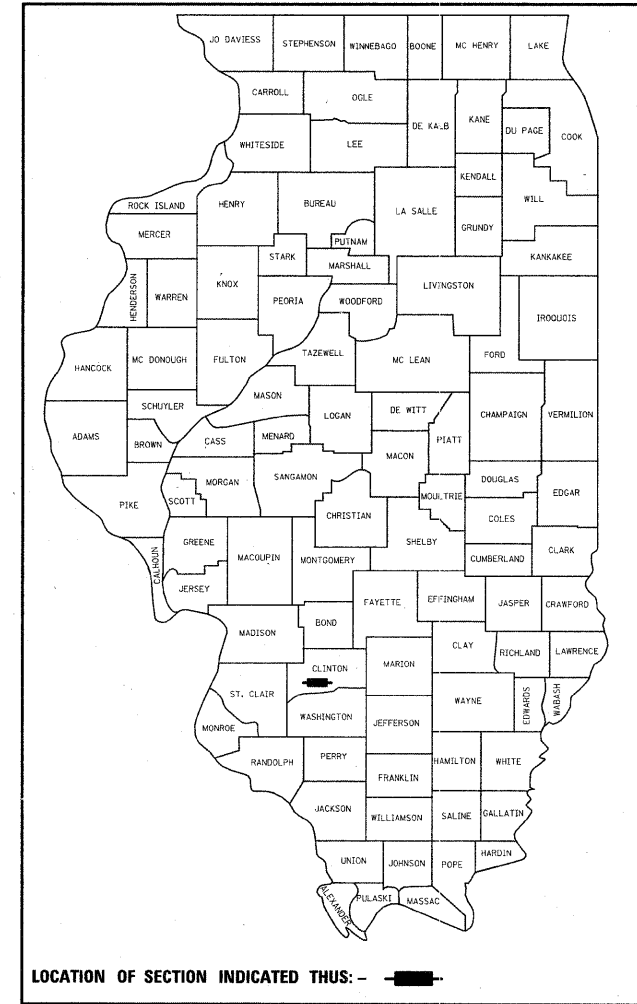


F.A.P. RTE.	SECTION	COUNTY	TOTAL SHEETS	SHEET NO.
805	126-BR-1	CLINTON	85	1
FED. ROAD DIST. NO.	ILLINOIS	CONTRACT NO. 76976		

* 85-1-84

D-98-005-06



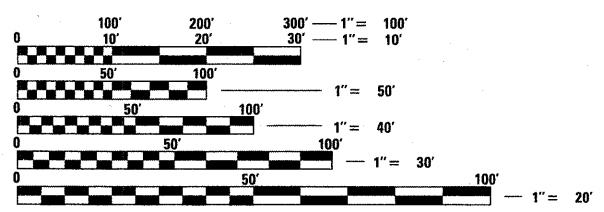
LOCATION OF SECTION INDICATED THUS: - [black rectangle] -

STATE OF ILLINOIS
DEPARTMENT OF TRANSPORTATION
DIVISION OF HIGHWAYS

**PROPOSED
HIGHWAY PLANS**

FAP ROUTE 805 (IL 161)
SECTION 126-BR-1
PROJECT NO: *BRF-0805(070)*
STRUCTURE REPLACEMENT
OVER SUGAR CREEK
CLINTON COUNTY
C-98-002-06

FOR INDEX OF SHEETS, SEE SHEET NO. 2

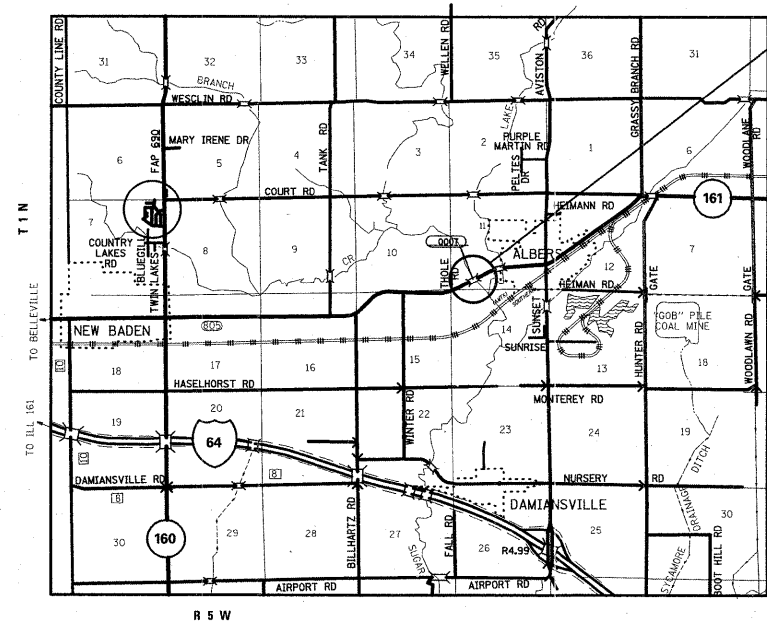


FULL SIZE PLANS HAVE BEEN PREPARED USING STANDARD ENGINEERING SCALES. REDUCED SIZED PLANS WILL NOT CONFORM TO STANDARD SCALES. IN MAKING MEASUREMENTS ON REDUCED PLANS, THE ABOVE SCALES MAY BE USED.

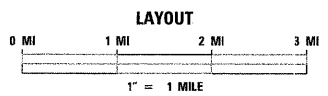
J.U.L.I.E.
JOINT UTILITY LOCATION INFORMATION FOR EXCAVATION
1-800-892-0123
OR 811

PROJECT ENGINEER: PATTI LEBEAU (618) 346-3179
PROJECT MANAGER: ART MUEHLFELD (618) 346-3209

CONTRACT NO. 76976



TRAFFIC DATA
ADT: 5800 (2009)
8300 (2029)
SU: 4.2%
MU: 3.2%



5-SPAN PPC DECK BEAM
TO BE REPLACED WITH A
5-SPAN I-BEAM STRUCTURE
OVER SUGAR CREEK
SN 014-0007 (E)
SN 014-0078 (P)
STA 1119+05.00
353'-0" BK TO BK OF ABUTMENTS

RESURFACING:
BEGIN STA 1112+75.00
END STA 1124+75.00

GROSS LENGTH = 787 FT = 0.149 MI
NET LENGTH = 787 FT = 0.149 MI

STATE OF ILLINOIS
DEPARTMENT OF TRANSPORTATION
DIVISION OF HIGHWAYS

SUBMITTED *Dec 11* 20 *08*

Ma [Signature]
DEPUTY DIRECTOR OF HIGHWAYS, REGION ENGINEER

January 30, 20 09
Charles G. Ingersoll [Signature]
ENGINEER OF DESIGN AND ENVIRONMENT

January 30, 20 09
Christine M. Reed [Signature]
DIRECTOR OF HIGHWAYS, CHIEF ENGINEER

**PRINTED BY THE AUTHORITY
OF THE STATE OF ILLINOIS**