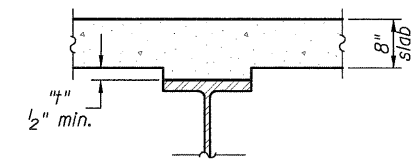
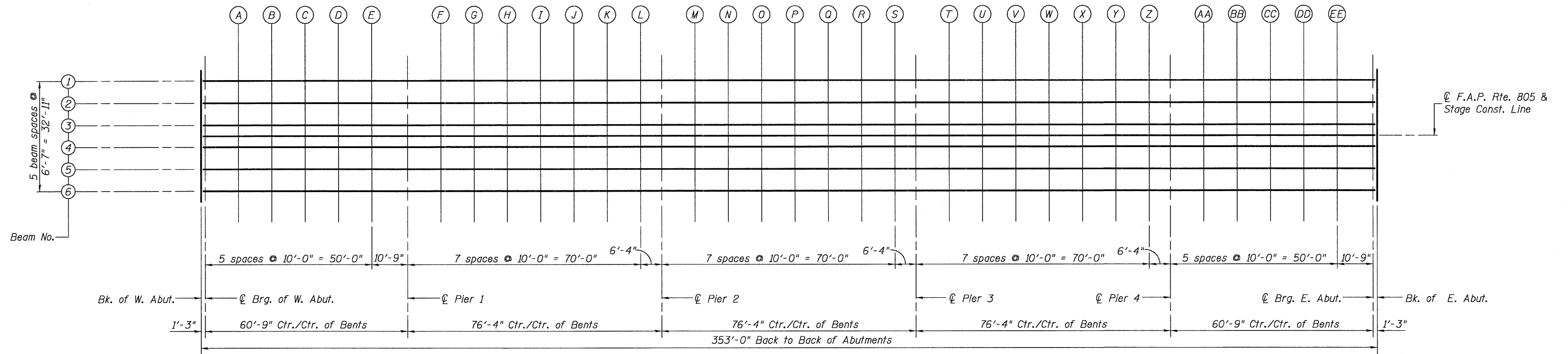


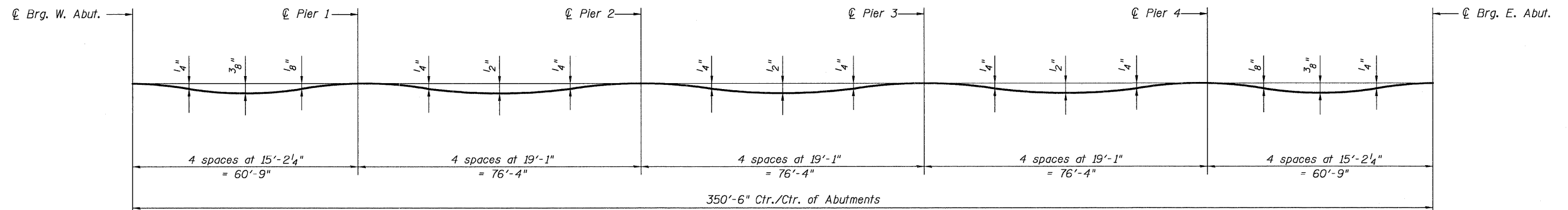
0140078.76976.05.TSPL.DGN DEC. 5, 2008

STATE OF ILLINOIS  
DEPARTMENT OF TRANSPORTATION



To determine "t": After all structural steel has been erected, elevations of the top flanges of the beams shall be taken at intervals shown on this sheet. These elevations subtracted from the "Theoretical Grade Elevations Adjusted for Dead Load Deflections" shown on sheets 6 thru 8, minus slab thickness, equals the fillet heights "t" above top flange of beams.

**FILLET HEIGHTS**



**DEAD LOAD DEFLECTION DIAGRAM**

(Includes weight of concrete slab only, exclusive of beam weight.)

*Note:*  
The above deflections are not to be used in the field if the engineer is working from the grade elevations adjusted for dead load deflections shown on sheets 6 thru 8.

DESIGNED	B.G.H.
CHECKED	L.D.G.
DRAWN	K.H.L.
CHECKED	B.G.H.

**TOP OF SLAB ELEVATIONS**

SHEET NO. 5 34 SHEETS	F.A.P. RTE. 805	SECTION 126-BR-1	COUNTY CLINTON	TOTAL SHEETS 85	SHEET NO. 36
	S.N. 014-0078		CONTRACT NO. 76976		
FED. ROAD DIST. NO.		ILLINOIS	FED. AID PROJECT		