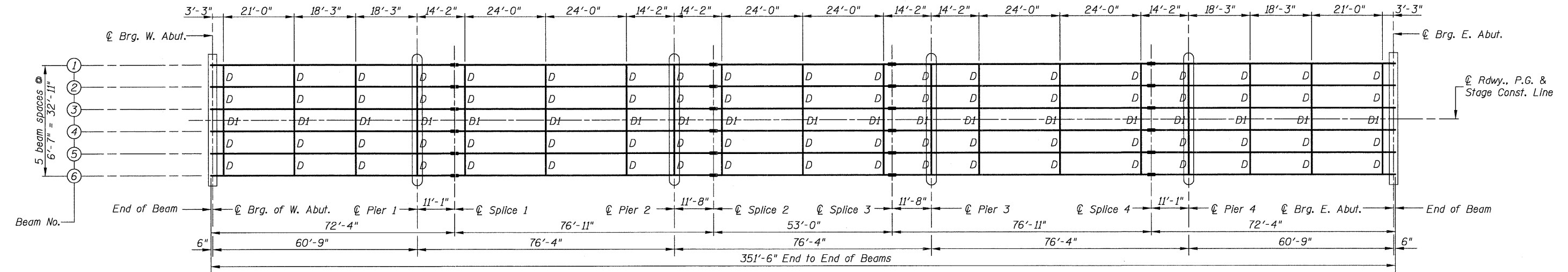


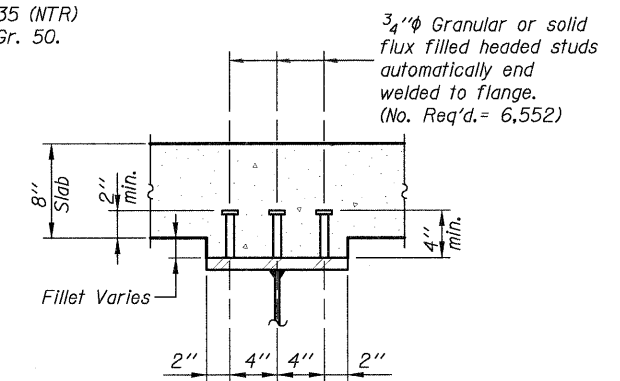
0140078_76976-IT_FRPL_DGN NOV. 21, 2008

STATE OF ILLINOIS
DEPARTMENT OF TRANSPORTATION

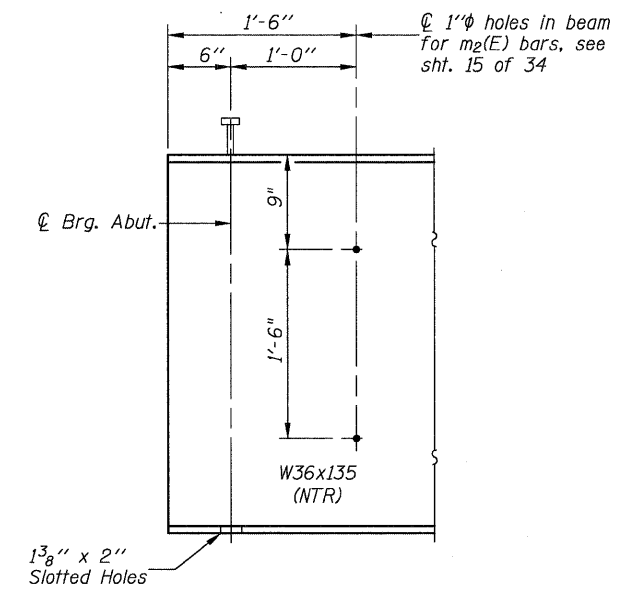


FRAMING PLAN

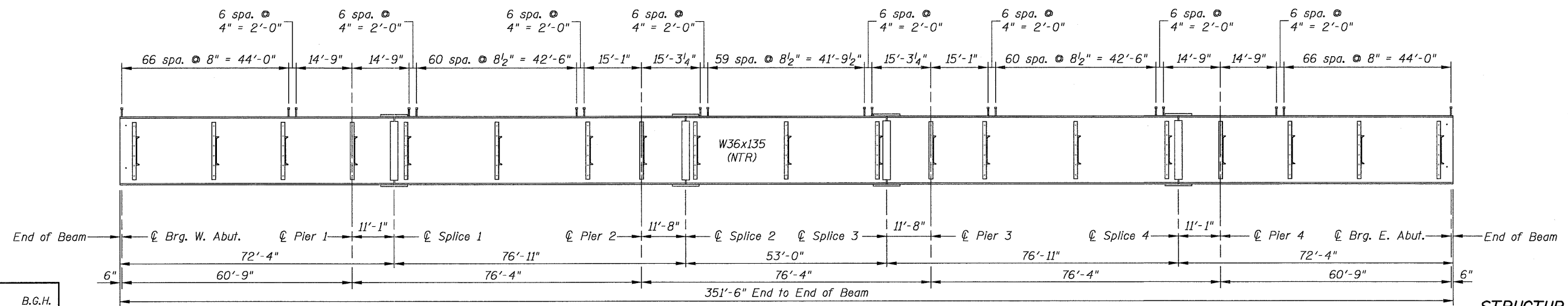
All beams are W36x135 (NTR) and AASHTO M270, Gr. 50.



SECTION A-A



TYP. END OF BEAM ELEVATION



BEAM ELEVATION

Note:
Load carrying components designated "NTR" shall conform to the Supplemental Requirements for Notch Toughness, Zone 2.

DESIGNED	B.G.H.
CHECKED	L.D.G.
DRAWN	K.H.L.
CHECKED	B.G.H.

SHEET NO. 17	F.A.P. RTE.	SECTION	COUNTY	TOTAL SHEETS	SHEET NO.
	805	126-BR-1	CLINTON	85	48
34 SHEETS	S.N. 014-0078		CONTRACT NO. 76976		
	FED. ROAD DIST. NO.	ILLINOIS	FED. AID PROJECT		

STRUCTURAL STEEL

H.M. & G. NO. 6020.131