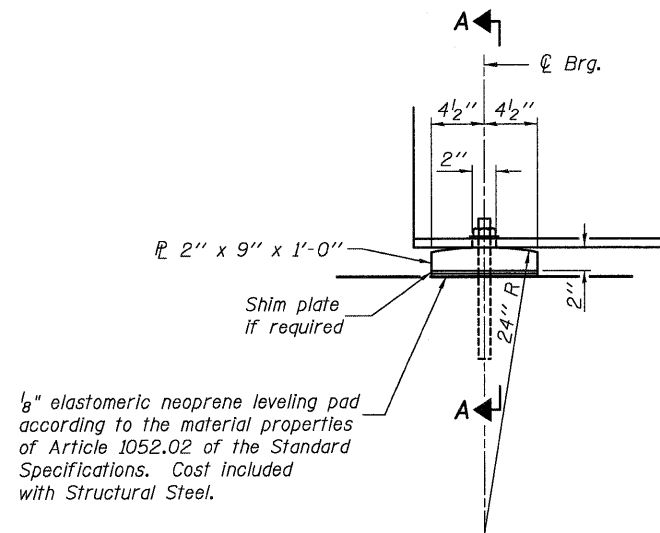


0140078.76976.19.BRGS.DGN NOV. 21, 2008

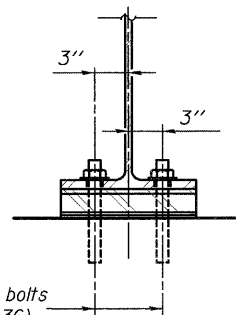
STATE OF ILLINOIS  
DEPARTMENT OF TRANSPORTATION



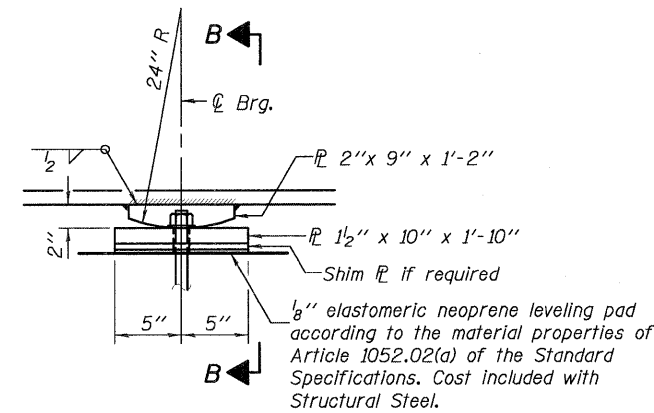
**ELEVATION AT ABUTMENT**

**FIXED BEARING AT ABUTMENTS**

Ø 1" x 12" anchor bolts (ASTM F1554 Grade 36) with 2 1/4" x 2 1/4" x 5/16" flange washer under nut. 1 3/8" x 2" slotted hole in flange. 1/2" holes in bearing plate. Contractor has the option of cast-in-place or drilled installation.

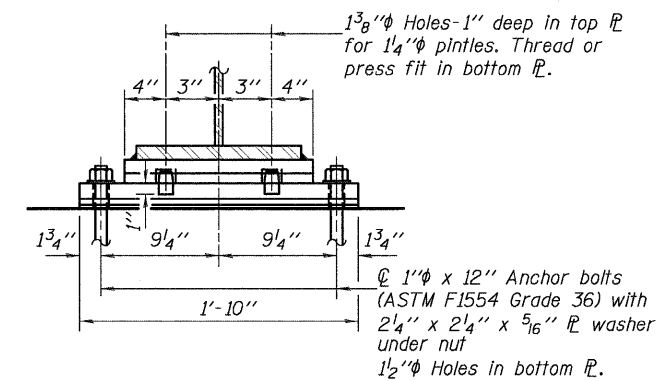


**SECTION A-A**



**ELEVATION AT PIER**

**FIXED BEARING AT PIERS**



**SECTION B-B**

**Notes:**

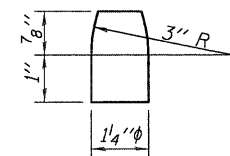
Anchor bolts shall be ASTM F1554 all-thread (or an Engineer-approved alternate material) of the grade(s) and diameter(s) specified. ASTM A307 Grade C anchor bolts may be used in lieu of ASTM F1554 Grade 36 (Fy=36ksi). The corresponding specified grade of AASHTO M314 anchor bolts may be used in lieu of ASTM F1554.

Anchor bolts at fixed bearings may be either cast in place or installed in holes drilled after the supported member is in place.

Drilled and set anchor bolts shall be installed according to Article 521.06 of the Standard Specifications.

Two 1/8 in. adjusting shims shall be provided for each bearing in addition to all other plates or shims and placed as shown on bearing details.

All bearing plates and pintles shall conform to the requirements of AASHTO M270, Grade 50.



**PINTLE**

**BILL OF MATERIAL**

Item	Unit	Total
Anchor Bolts 1"	Each	72

DESIGNED	B.G.H.
CHECKED	L.D.G.
DRAWN	K.H.L.
CHECKED	B.G.H.

**BEARING DETAILS**

SHEET NO. 19	F.A.P. RTE.	SECTION	COUNTY	TOTAL SHEETS	SHEET NO.
	805	126-BR-1	CLINTON	85	50
34 SHEETS	S.N. 014-0078		CONTRACT NO. 76976		
	FED. ROAD DIST. NO.	ILLINOIS	FED. AID PROJECT		