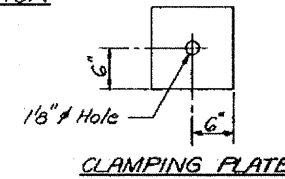
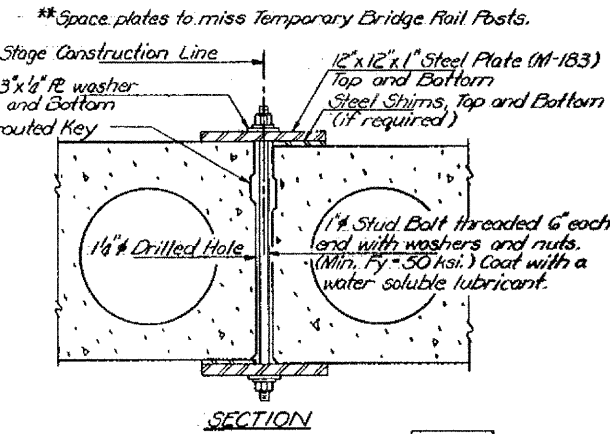
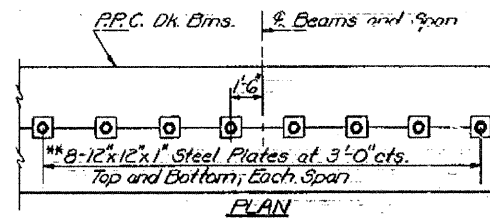
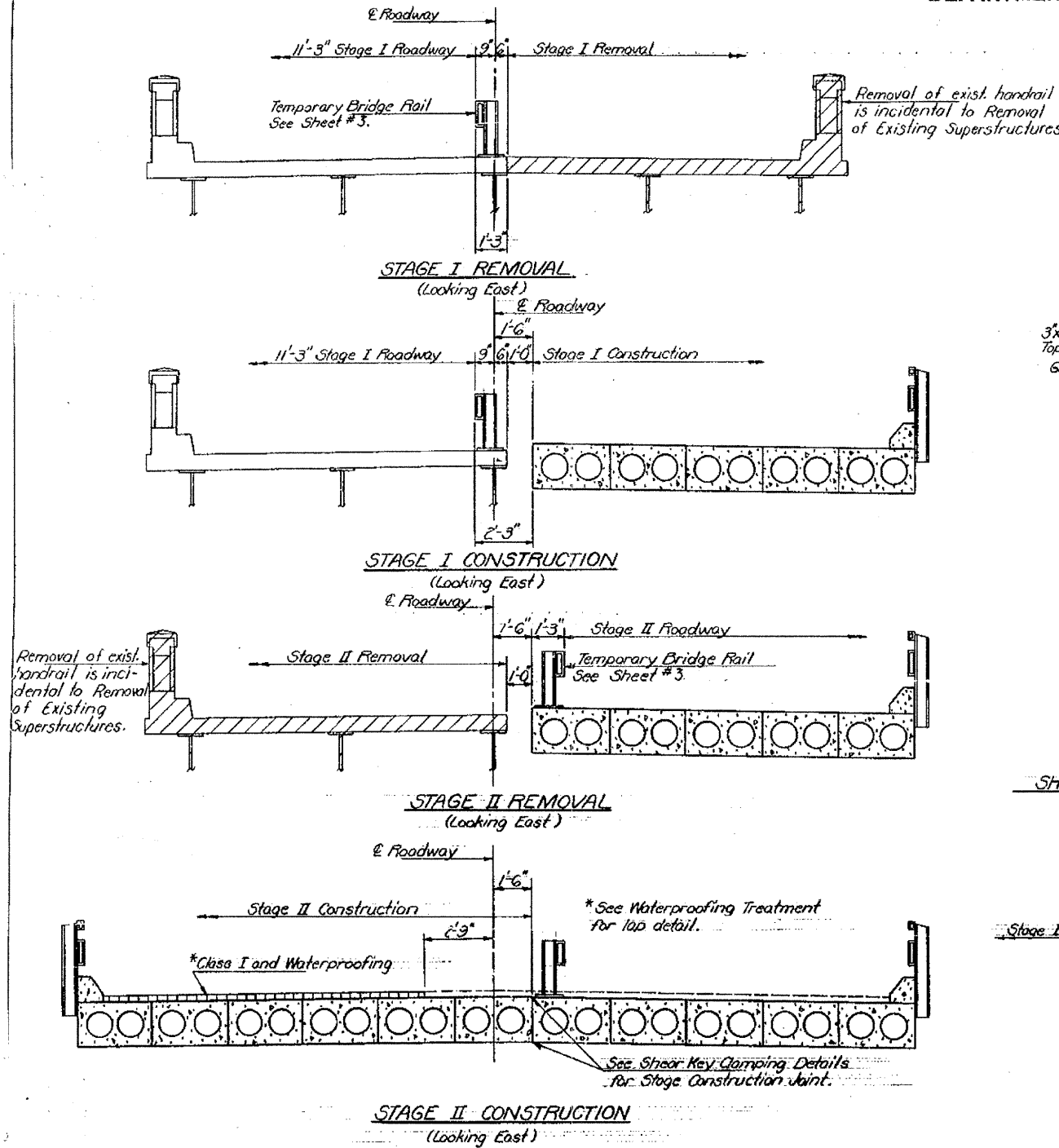


STATE OF ILLINOIS
DEPARTMENT OF TRANSPORTATION

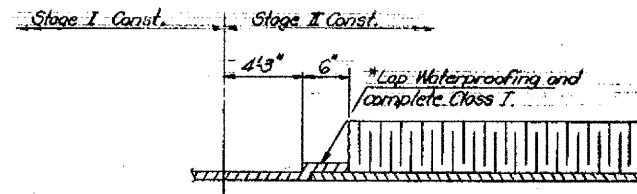
STATE NO.	DISTRICT	PROJECT	TOTAL SHEETS	SHEET NO.
			30	9
F.B.L.		S.A.		
FED. ROAD DIST. NO. 7		ILLINOIS	FED. AID PROJECT	

SHEET NO. 2
14 SHEETS



SHEAR KEY CLAMPING DETAILS AT STAGE CONST. JT.

See Special Provisions.
Cost is incidental to Precast Prestressed Concrete Deck Beams.



*Class I, Waterproofing and Waterproofing Lap shall be completed in Stage II Construction after Shear Key Clamping Devices and Temporary Bridge Rail for Stage II Roadway have been removed.

DESIGNED	D.C.
CHECKED	GR. LK
DRAWN	Joe Sutherland
CHECKED	GR. LK

January 12, 2009
James J. Kasbaum
Carl E. Hanneman
 APPROVED
 CHIEF OF BUREAU OF STRUCTURES

FOR INFORMATION ONLY

STAGE CONSTRUCTION
 FA. RT. 805 SEC. 126 BR
 CLINTON COUNTY
 STATION 1119+05.00

FILE NAME *	USER NAME = golanh	DESIGNED - HG	REVISED - ---	STATE OF ILLINOIS DEPARTMENT OF TRANSPORTATION	EXISTING STRUCTURE	F.A.P. RTE.	SECTION	COUNTY	TOTAL SHEETS	SHEET NO.	
c:\pwwork\pwwork\golanh\doas51845\p1n08936.dgn		DRAWN - HG	REVISED - ---			805	126-BR-1	CLINTON	85	67	
PLOT SCALE = 103.6405 1/1 IN.		CHECKED - ---	REVISED - ---			SCALE: 1" = 50'			SHEET NO. ___ OF ___ SHEETS STA. _____ TO STA. _____		FED. ROAD DIST. NO. - [ILLINOIS] FED. AID PROJECT
PLOT DATE = 12/9/2008		DATE - ---	REVISED - ---						CONTRACT NO. 76976		