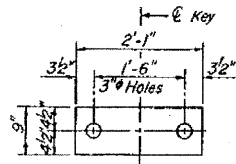
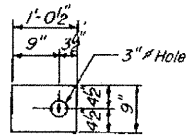


STATE OF ILLINOIS
DEPARTMENT OF TRANSPORTATION

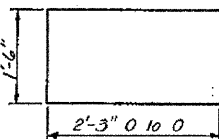
ROUTE NO.	SECTION	COUNTY	TOTAL SHEETS	SHEET NO.
			30	12
14 SHEETS				



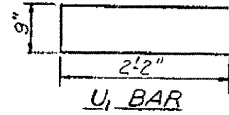
FABRIC BEARING PAD
(Interior)



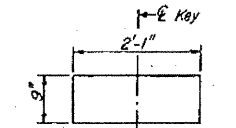
FABRIC BEARING PAD
(Exterior)



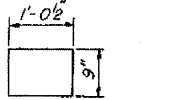
U BAR



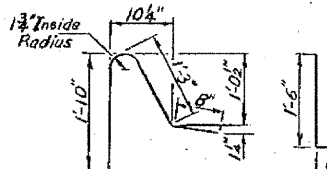
U1 BAR



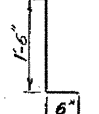
GRAPHITED ASBESTOS
BEARING PAD
(Interior)



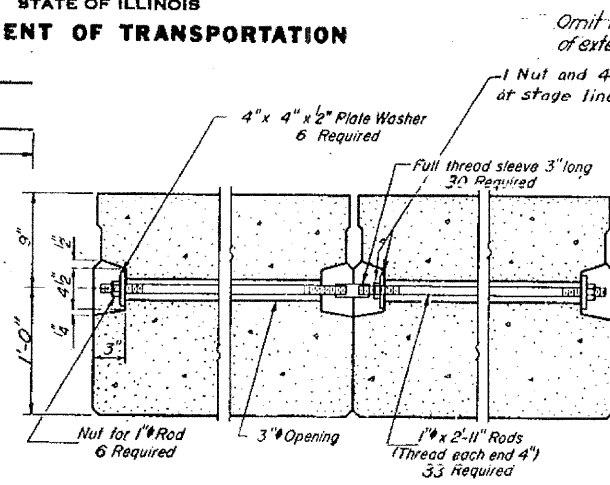
GRAPHITED ASBESTOS
BEARING PAD
(Exterior)



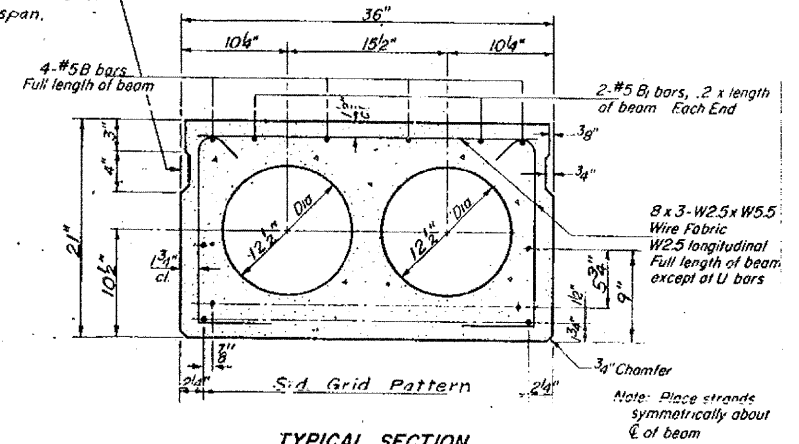
D BAR



E BAR

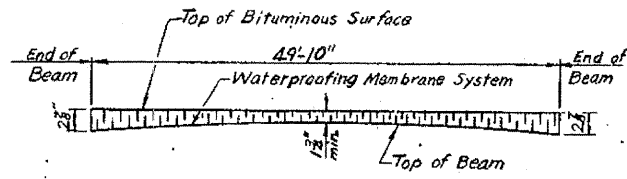


TYPICAL TRANSVERSE TIE ASSEMBLY



TYPICAL SECTION

1/2" Strands, Each Strand Stressed to 28,900 lbs.
10-Strands 1 3/4" up, 2-Strands 3/4" up, 2 Strands 9" up



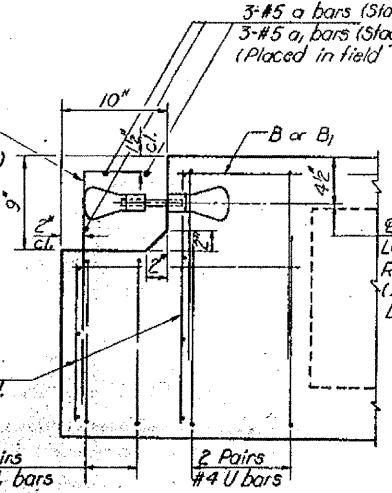
ANTICIPATED CAMBER DIAGRAM

3-#5 a bars (Stage I Const.)
3-#5 a bars (Stage II Const.)
(Placed in field full width of deck)

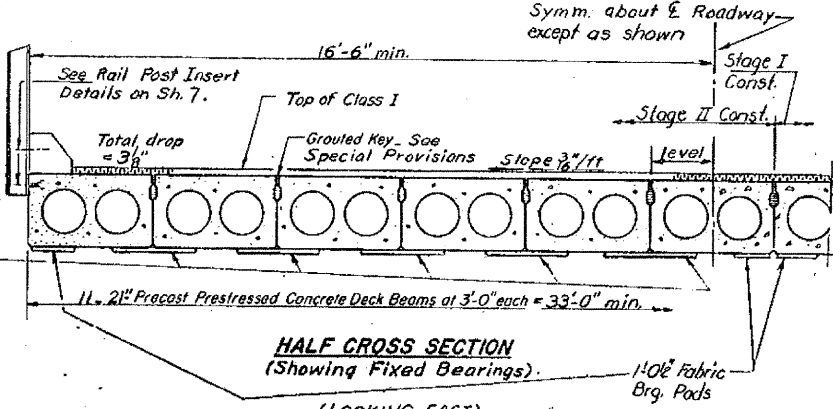
3-#5 E bars @ 12" cts.
Each Beam (Space to miss Flored Coil Loops)

8x3-W2.5 x W5.5
Wire Fabric, 1/2" cl.
(W5.5 vertical)

See Detail of Exp End

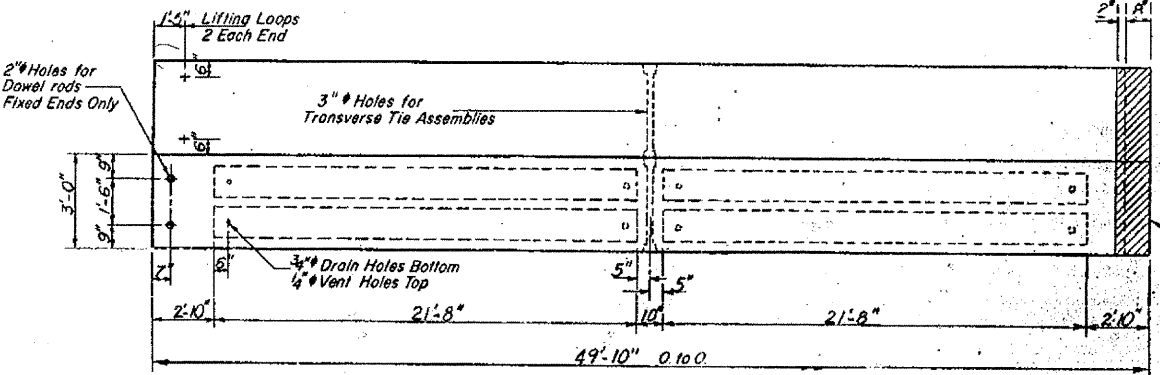


EXP. END OF BEAM DETAIL



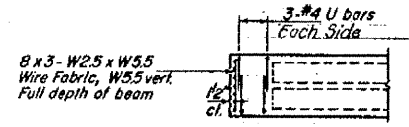
HALF CROSS SECTION
(SHOWING FIXED BEARINGS)

Note:
For Cross Section showing expansion bearings see sheet #4.
For details of lifting loop, drain tube, end of curb and section thru curb see Sh. #4.
For placement of D bars see Sh. #4.



FIXED END PLAN

Note: The west end of the Span 3 beams shall have the 9"x10" block out as shown in End of Beam Detail (Exp. End)



END PLAN
(Fixed End)

DESIGNED D.C.		DATE	January 12, 1984
CHECKED G.R. LK		DATE	January 12, 1984
DRAWN JMB		DATE	January 12, 1984
CHECKED G.R. LK		DATE	January 12, 1984

PD-3-S 6-15-80

NOTES

Prestressing steel shall be non-galvanized high strength, stress-relieved 7-wire strand, Grade 270. The nominal diameter shall be 1/2" and the nominal cross-sectional area shall be 0.153 sq. in. Lifting loops shall be 5/8" diameter, 6 x 25 class wire rope with fiber core and shall have a minimum ultimate tensile strength of 73,000 lbs. or 2 - 1/2" #270 ksi strands as shown on sh. #4. The 1" rods in the transverse tie assembly shall be tightened to a snug fit and the threads set. Pockets that receive transverse tie bar on outside shall be filled with grout after transverse tie assembly is in place.

Reinforcement bars shall conform to AASHTO: M-31 or M-53, Grade 60. The bearing seat surfaces shall be adjusted by shimming to assure firm and even bearing. Two 1/8" fabric adjusting shims of the dimensions of the Exterior Bearing Pad shall be provided for each bearing.

Keyway surfaces shall be cleaned to remove form oil or other bond breaking material prior to shipment of beams. Cleaning shall be done by sandblasting the keyway areas between top of the beam and the bottom edge of the Key.

Calcium Chloride Corrosion Inhibitor, as covered in the Special Provisions shall be used in the concrete for precast prestressed deck beams. Required concrete strength, f'c, shall be 4,000 psi. An equal substitution of the low-relaxation strands for the stress-relieved strands will be permitted.

BILL OF MATERIAL

Bar	No	Size	Length	Shape
a	12	#5	15'-5"	
a1	12	#5	18'-0"	
Precast Prestressed Concrete Deck Beams (21" Depth) Sq Ft. 4934				
Class X Concrete Cu. Yds. 3.0				
Reinforcement Bars Lbs. 420				

SPANS 2, 3 & 4
DECK BEAM DETAILS
F.A. RT. 805, SEC. 126 BR
CLINTON COUNTY
STATION 1119 + 05

FOR INFORMATION ONLY

FILE NAME =	USER NAME = gclrh	DESIGNED - HG	REVISED -	STATE OF ILLINOIS DEPARTMENT OF TRANSPORTATION	EXISTING STRUCTURE	F.A.P. R.T. 805	SECTION 126-BR-1	COUNTY CLINTON	TOTAL SHEETS 85	SHEET NO. TO
cl:\pwork\pvdot\gclrh\dms51845\pln00516a.dgn		DRAWN - HG	REVISED -	SCALE: 1" = 50"	SHEET NO. OF SHEETS	STA. TO STA.	CONTRACT NO. 76976			
		CHECKED -	REVISED -							
		DATE	REVISED -							