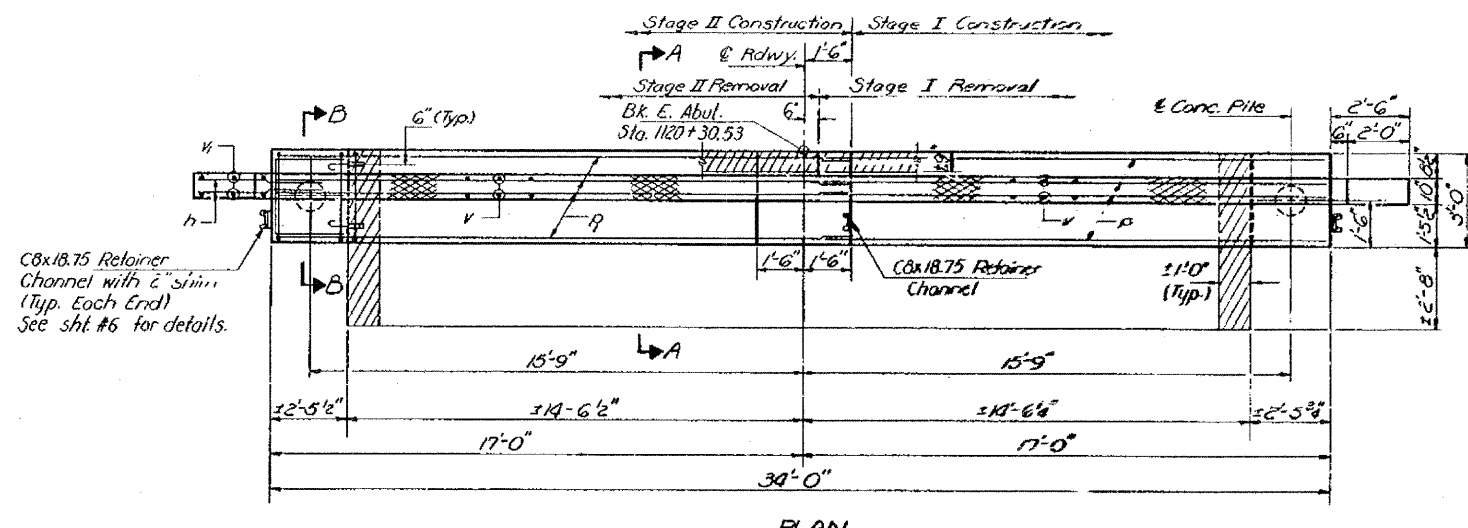
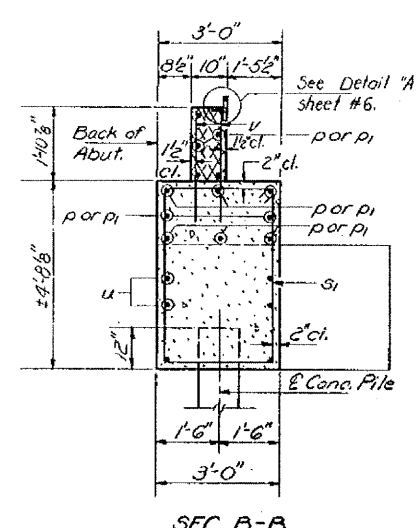
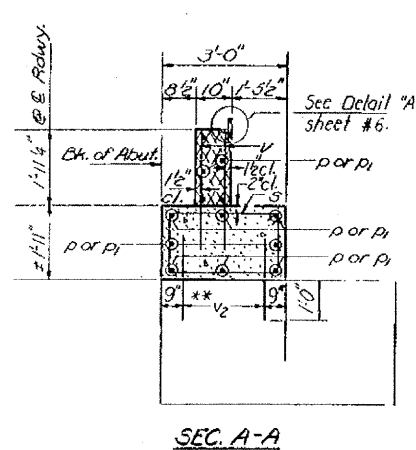
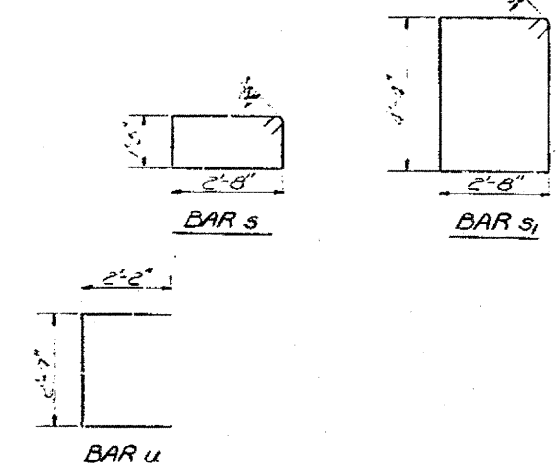
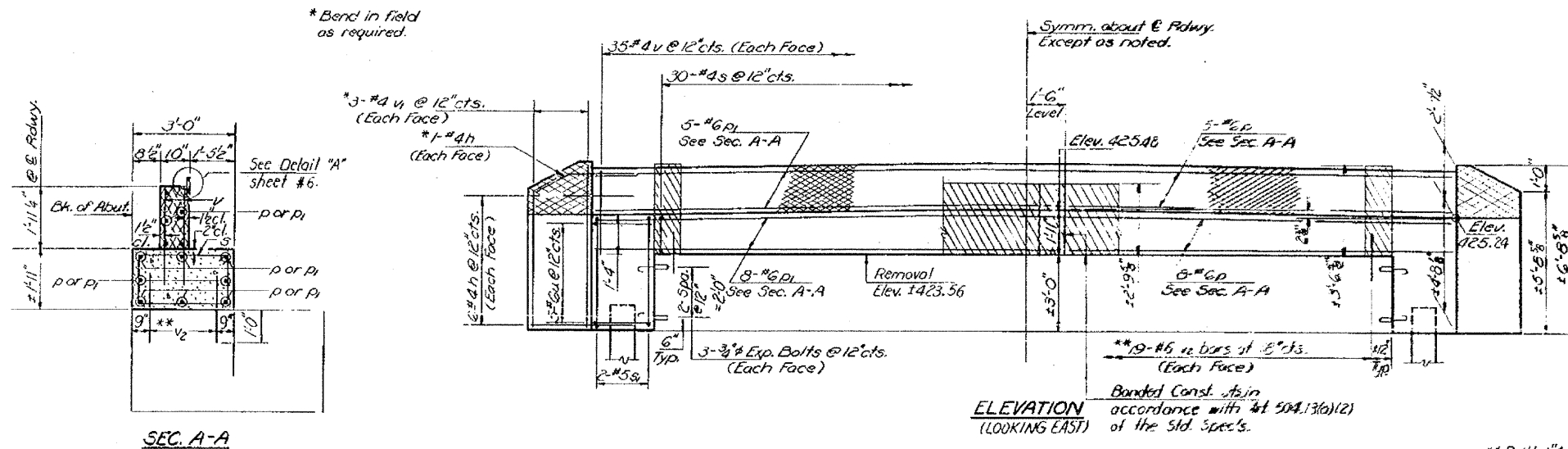


STATE OF ILLINOIS  
DEPARTMENT OF TRANSPORTATION

DATE	30	16	SHEET NO. 9
NO.			14 SHEETS



\*\*Drill 1" x 1'-0" hole. Epoxy grout vs bars. See Special Provisions for epoxy grout.

BILL OF MATERIAL

Bar	No	Size	Length	Shape
h	28	#4	3'-6"	
p	13	#6	16'-4"	
p	13	#6	18'-3"	
s	30	#4	8'-11"	□
s	4	#5	14'-10"	□
u	10	#6	6'-11"	□
v	70	#4	3'-0"	
v	12	#4	6'-3"	
v2	38	#6	2'-6"	
Class X Concrete		Cu. Yd.	11.3	
Concrete Removal		Cu. Yd.	3	
Reinforcement Bars		Lbs.	1420	
Concrete Piles		Ln. Ft.	70	
Expansion Bars		# of Each	12	

PILE DATA  
Type: Concrete  
Capacity: 30 Tons  
Est. Length: 35'  
No. Req'd: 2

Notes:  
Hatched area denotes existing concrete to be removed.  
Cross hatched area to be poured after deck beams are in place.  
Existing Reinforcement extending into removed areas shall be cleaned and incorporated into new construction.  
Expansion bolts shall be anchored in sound concrete.

DESIGNED: *Steve Schultz*  
CHECKED: *LK*  
DRAWN: *J. Sutherland*  
CHECKED: *LK GR*  
EXAMINED: *[Signature]*  
PASSED: *[Signature]*  
APPROVED: *[Signature]*

EAST ABUTMENT  
F.A. RT 805 SEC. 126 BR  
CLINTON COUNTY  
STATION 1119+05

FOR INFORMATION ONLY