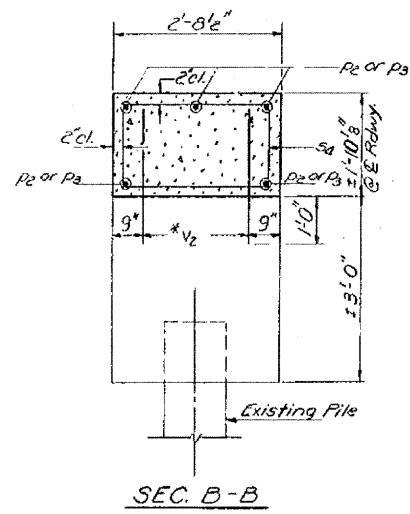
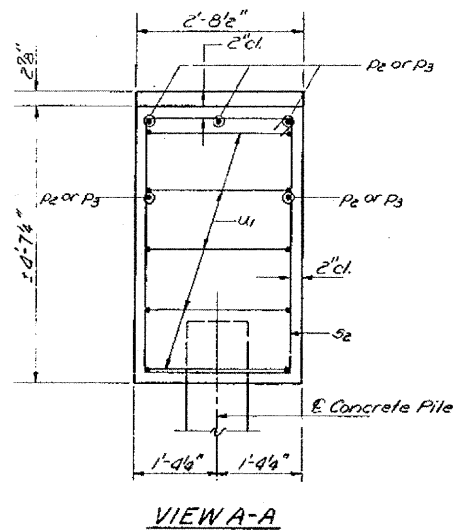


STATE OF ILLINOIS
DEPARTMENT OF TRANSPORTATION

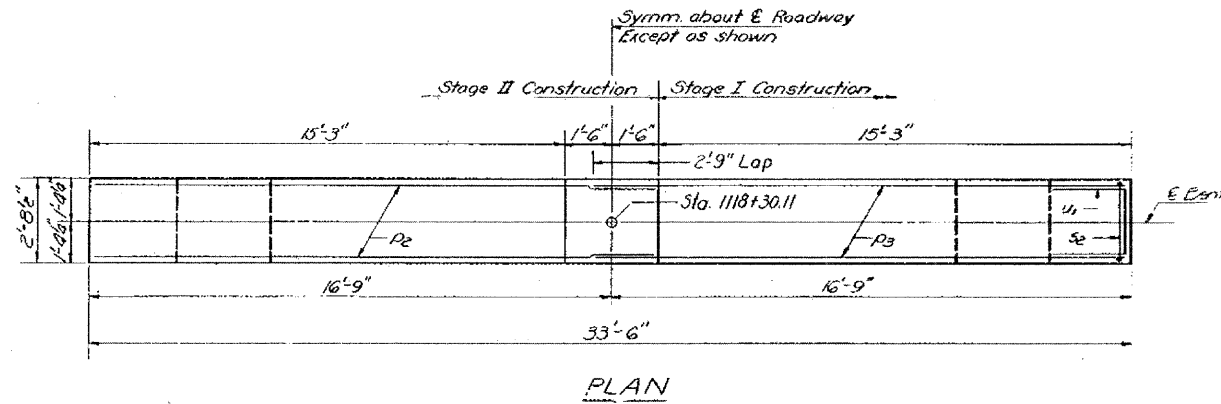
DATE	NO.	BY	REV.	SHEET NO.
				17
				4 SHEETS



SEC. B-B

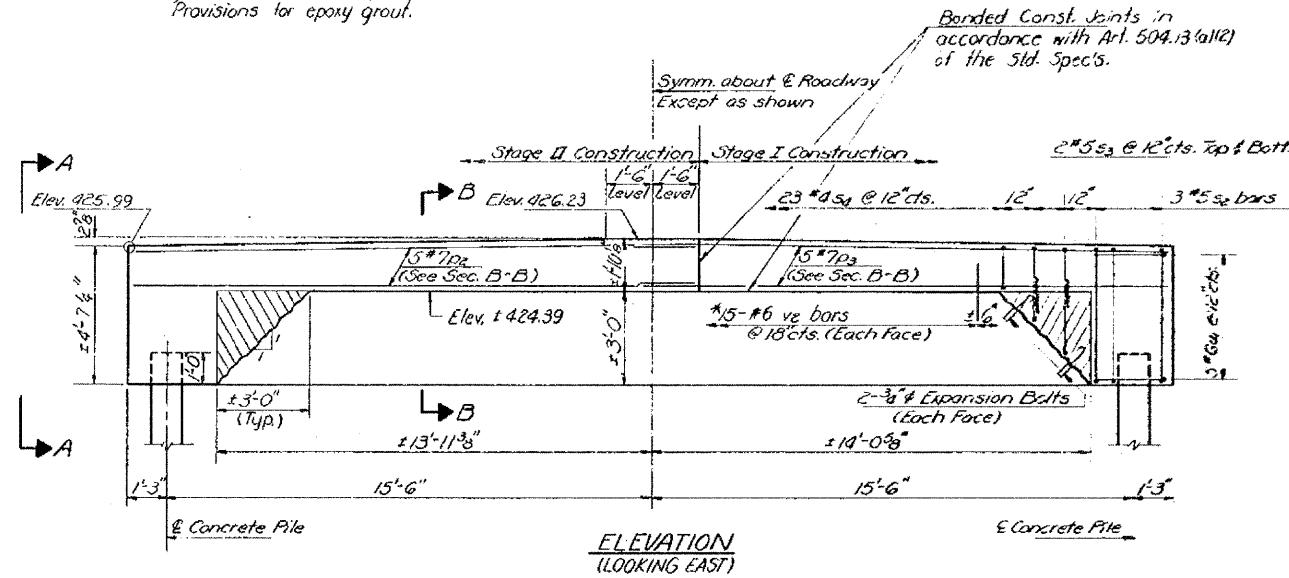


VIEW A-A



PLAN

*Drill 1" x 1'-0" hole. Epoxy grout vs bars. See Special Provisions for epoxy grout.

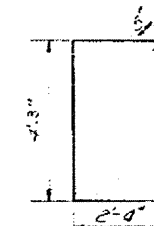


ELEVATION (LOOKING EAST)

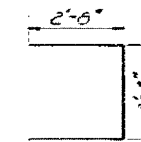
PILE DATA

Type: Concrete
Capacity: 45 Tons
Est. Length: 43'
No. Req'd: 2

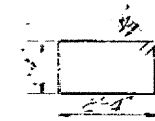
Notes:
Hatched area denotes existing concrete to be removed.
Existing Reinforcement extending into removed areas shall be cleaned and incorporated into new construction.
Expansion bolts shall be anchored in sound concrete.
Cross hatched area indicates existing concrete to be repaired.



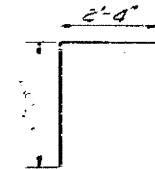
BAR S2



BAR U1



BAR S4

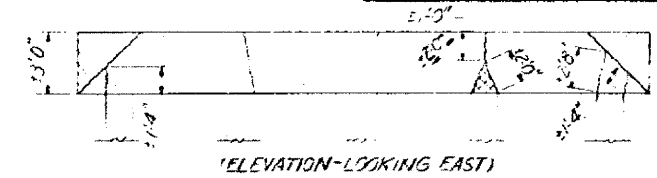


BAR S3

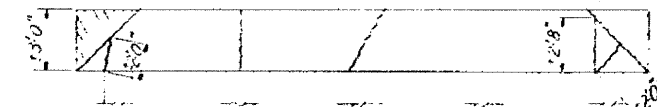
BILL OF MATERIAL

Bar No.	Size	Length	Shape
S2	#7	18'-0"	—
S3	#7	18'-0"	—
S4	#5	14'-0"	□
S3	#5	6'-10"	□
S3	#4	8'-1"	□
U1	#6	7'-7"	—
U2	#6	2'-5"	—

Class X Concrete Cu. Vol. 8.3
Concrete Removal Cu. Vol. 1
Reinforcement Bars Pound 860
Expansion Bolts #4 Each 3
Concrete Piles Lin. Ft. 86



ELEVATION-LOOKING EAST



ELEVATION-LOOKING WEST
CONCRETE REPAIR DETAILS

BENT 1
FA. RT. 805 SEC. 126 BR
CLINTON COUNTY
STATION 1119+05

DESIGNED: <i>[Signature]</i>	EXAMINED: <i>[Signature]</i>
CHECKED: <i>[Signature]</i>	PASSED: <i>[Signature]</i>
DRAWN: <i>[Signature]</i>	APPROVED: <i>[Signature]</i>
CHECKED: LK GR	

FOR INFORMATION ONLY

FILE NAME =	USER NAME = gclink	DESIGNED - HG	REVISOR -	STATE OF ILLINOIS DEPARTMENT OF TRANSPORTATION	EXISTING STRUCTURE	F.A.P. RITE: 805	SECTION: 126-BR-1	COUNTY: CLINTON	TOTAL SHEETS: 85	SHEET NO.: 75	
DRAWN - HG						CONTRACT NO. 76976					
CHECKED -						SCALE: 1" = 50"		SHEET NO. OF SHEETS		STA. TO STA.	
PLOT SCALE = 1/8" = 1'-0"				DATE		FED. ROAD DIST. NO.		ILLINOIS FED. AID PROJECT			