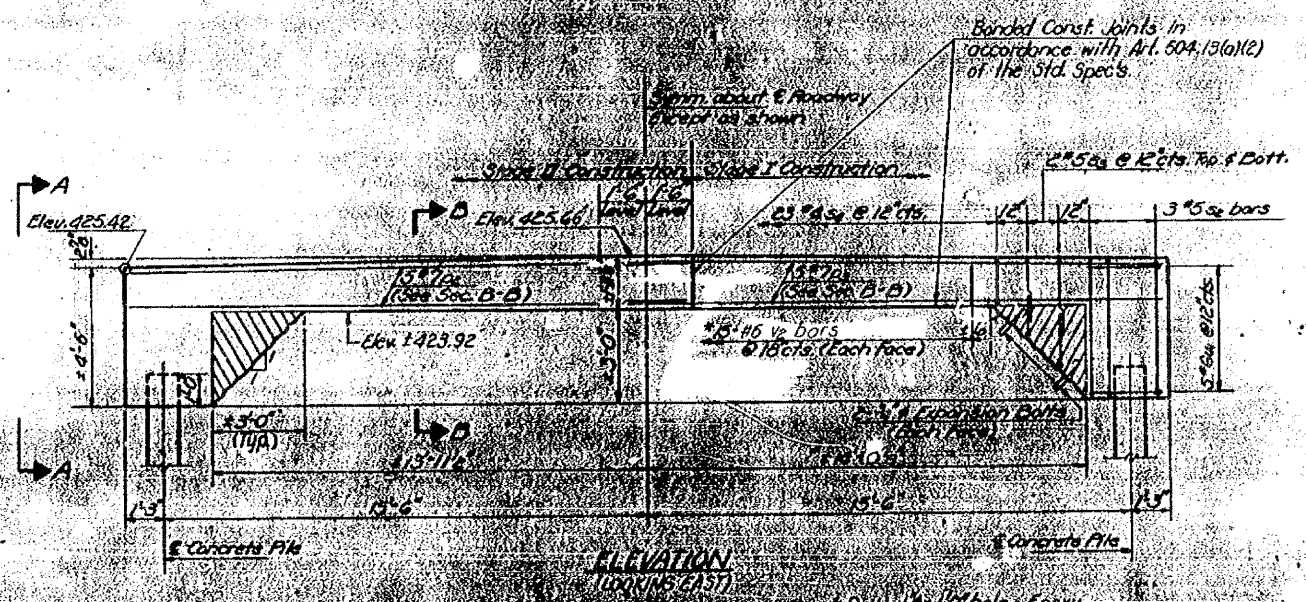
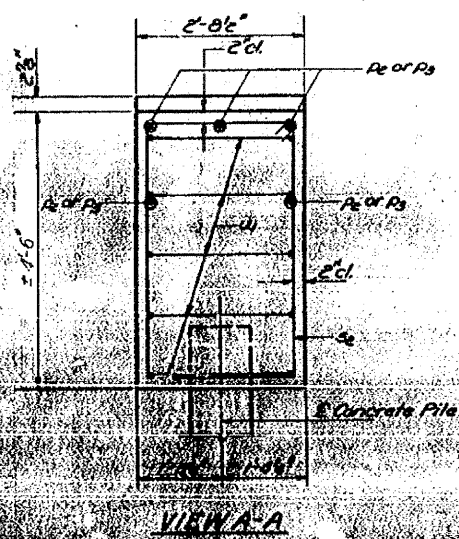
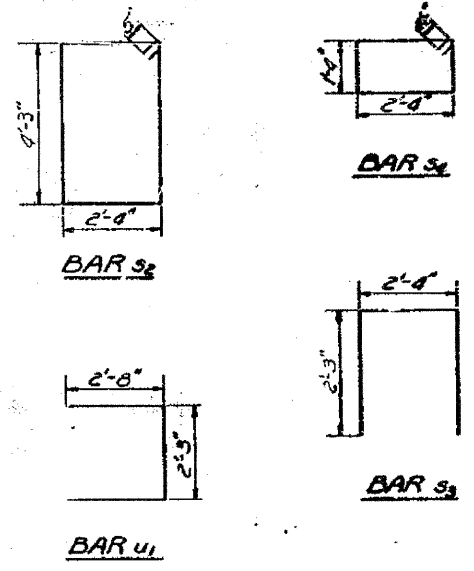
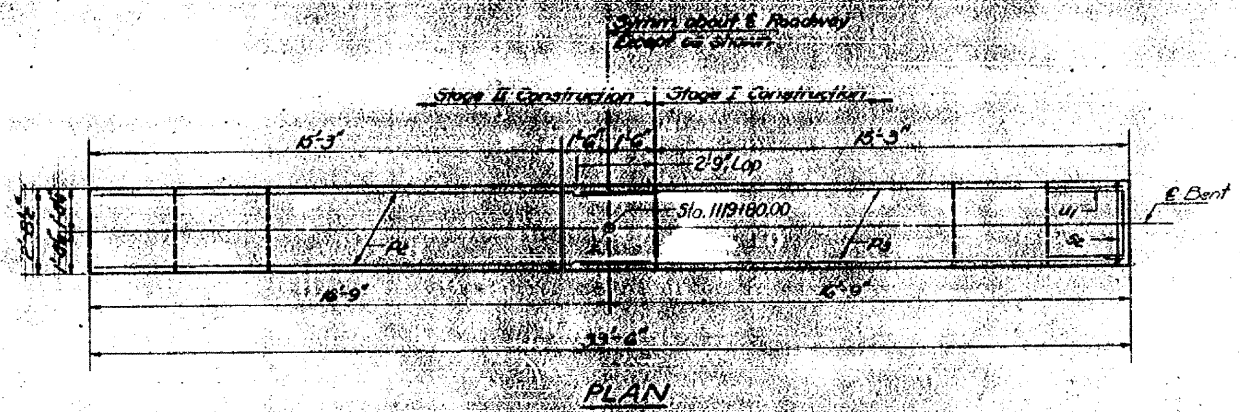
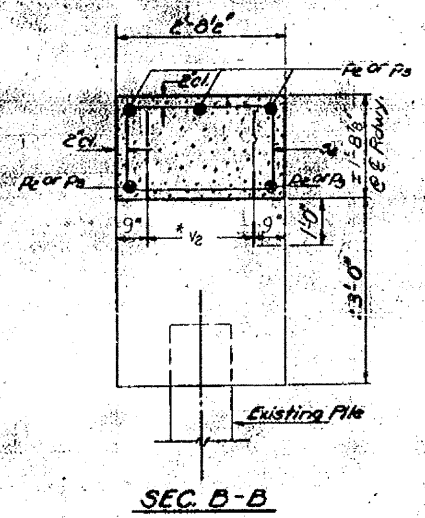


STATE OF ILLINOIS
DEPARTMENT OF TRANSPORTATION

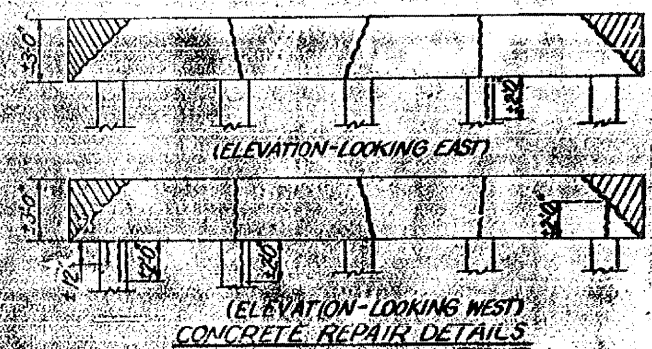
DATE	NO.	BY	REV.	NO.	SHEET NO. 13
			30	20	14 SHEETS



BILL OF MATERIAL

Bar No.	Size	Length	Shape
R1	#7	18'-0"	—
R2	#7	18'-0"	—
B1	#6	13'-0"	□
B2	#6	6'-10"	□
V1	#6	8'-1"	□
V2	#6	7'-7"	□
U1	#6	2'-6"	—
Class X Concrete 0.72 7.9			
Concrete Removal 0.14 1			
Reinforcement Bars 860			
Expansion Bolts 8			
Concrete Piles 1.00 0.5			

PILE DATA
Capacity: _____
Allowable: _____
No. Piles: 2



DESIGNED BY: _____
DRAWN BY: _____
CHECKED BY: _____
DATE: _____

FA. RT. 805 SEC. 126 BR
CLINTON COUNTY
STATION 118+00

FOR INFORMATION ONLY

FILE NAME: c:\pwork\pwork\golinrh\dms51845\p1n025a.dgn	USER NAME: golinrh	DESIGNED: HG	REVISIONS: ---	STATE OF ILLINOIS DEPARTMENT OF TRANSPORTATION	EXISTING STRUCTURE	F.A.P. RTE. 805	SECTION 126-BR-1	COUNTY CLINTON	TOTAL SHEETS 85	SHEET NO. 78	
PLOT SCALE: 1/8" = 1'-0"	DRAWN: HG	CHECKED: ---	REVISIONS: ---			SCALE: 1" = 30"	SHEET NO. 13 OF 14 SHEETS	STA. 118+00 TO STA. 118+00	CONTRACT NO. 76976		
PLOT DATE: 12/9/2008	DATE: ---	REVISIONS: ---	REVISIONS: ---			ILLINOIS FED. AID PROJECT					