

F.A.P. RTE.	SECTION	COUNTY	TOTAL SHEETS	SHEET NO.
761	104-BR-2	GREENE	82	1
FED. ROAD DIST. NO.	ILLINOIS	CONTRACT NO. 76987		

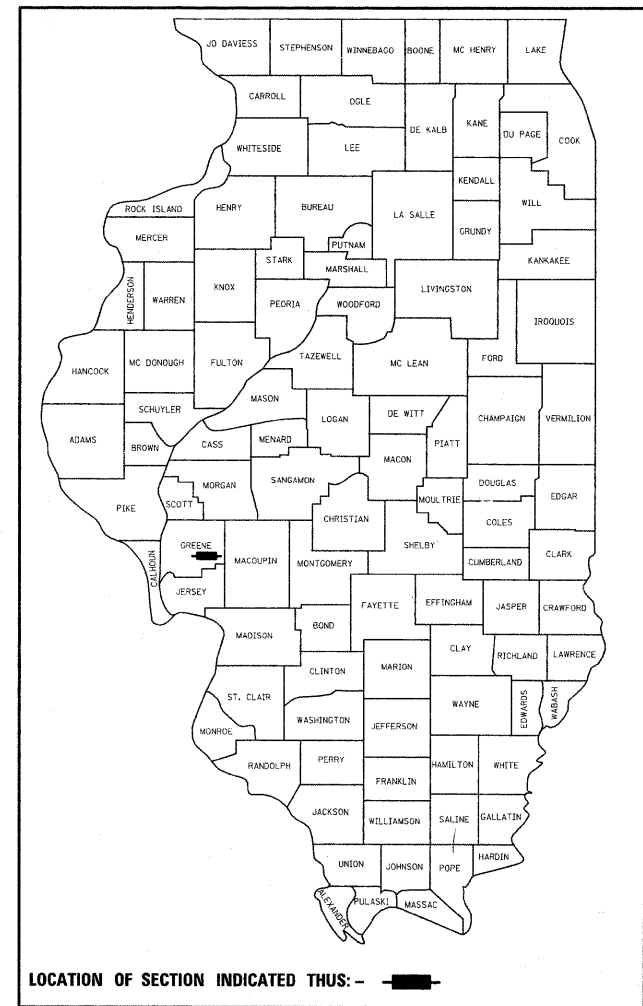
STATE OF ILLINOIS
DEPARTMENT OF TRANSPORTATION
DIVISION OF HIGHWAYS

PROPOSED
HIGHWAY PLANS

FAP ROUTE 761 (IL ROUTE 108)
SECTION 104-BR-2
PROJECT: BRF-0761(010)
GREENE COUNTY
STRUCTURE REPLACEMENT
C-98-092-08

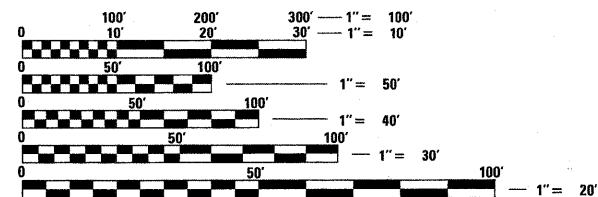
FOR INDEX OF SHEETS, SEE SHEET NO. 2

D-98-015-06



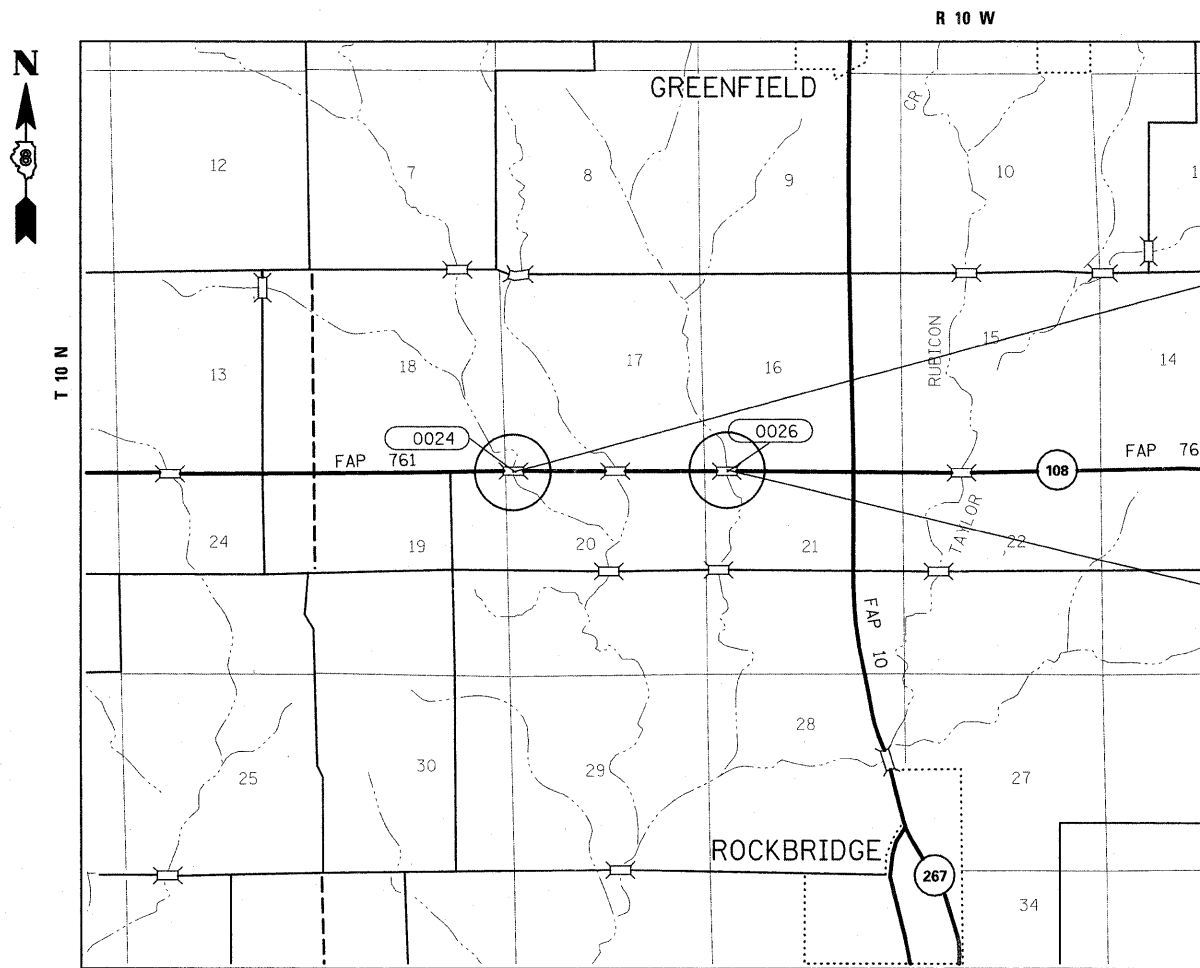
FAP 761 (IL 108)
ADT = 1100 (2005)
ADT = 1125 (2007)
ADT = 1350 (2027)
SU = 4.5%
MU = 4.5%

DESIGN DESIGNATION
NA



FULL SIZE PLANS HAVE BEEN PREPARED USING STANDARD ENGINEERING SCALES. REDUCED SIZED PLANS WILL NOT CONFORM TO STANDARD SCALES. IN MAKING MEASUREMENTS ON REDUCED PLANS, THE ABOVE SCALES MAY BE USED.

J.U.L.I.E.
JOINT UTILITY LOCATION INFORMATION FOR EXCAVATION
1-800-892-0123
OR 811



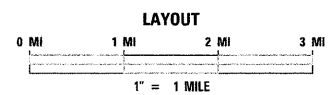
SINGLE SPAN PPC DECK BEAM
TO BE REPLACED WITH PRECAST
TRIPLE BOX CULVERT
OVER TAYLOR CREEK
STA 1068+35
SN 031-0024 (E)
SN 031-2012 (P)

SINGLE SPAN PPC DECK BEAM
TO BE REPLACED WITH SINGLE
SPAN WIDE FLANGE STRUCTURE
OVER TAYLOR CREEK
STA 1123+55
SN 031-0026 (E)
SN 031-0042 (P)

SN 031-2012
GROSS LENGTH 0.0104 MI
NET LENGTH 0.0104 MI

SN 031-0042
GROSS LENGTH 0.0165 MI
NET LENGTH 0.0165 MI

TOTAL
GROSS LENGTH 0.0269 MI
NET LENGTH 0.0269 MI



SN 031-0024	SN 031-0026
LATITUDE: 39° 18' 20.06"	LATITUDE: 39° 18' 19.97"
LONGITUDE: 90° 14' 27.24"	LONGITUDE: 90° 13' 16.39"

PROJECT ENGINEER: PATTI LeBEAU (618 346-3179)
PROJECT MANAGER: ARTHUR MUEHLFELD (618) 346-3209

CONTRACT NO. 76987

STATE OF ILLINOIS
DEPARTMENT OF TRANSPORTATION
DIVISION OF HIGHWAYS

SUBMITTED December 11, 2008

Alan C. Jones
DEPUTY DIRECTOR OF HIGHWAYS, REGION ENGINEER

January 30, 2009
Charles A. Ingersoll
ENGINEER OF DESIGN AND ENVIRONMENT

January 30, 2009
Christine M. Reed
DIRECTOR OF HIGHWAYS, CHIEF ENGINEER

**PRINTED BY THE AUTHORITY
OF THE STATE OF ILLINOIS**