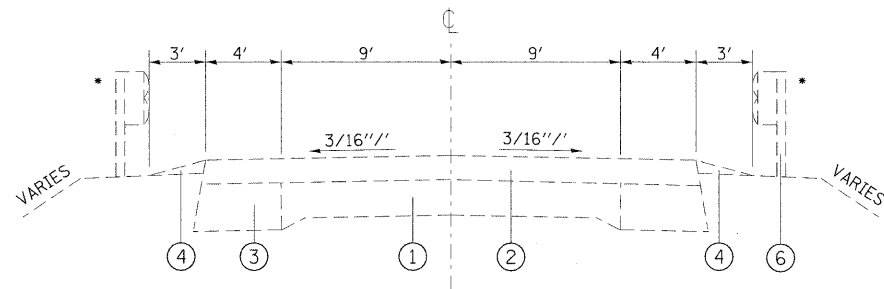


EXISTING TYPICAL SECTION

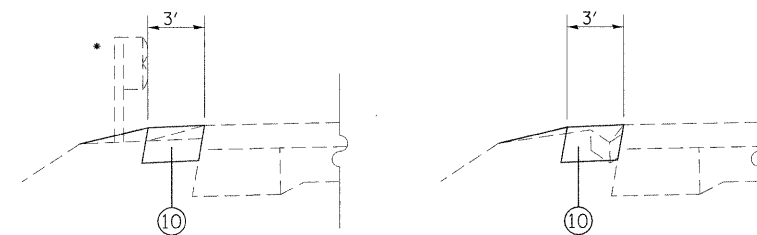
STA. 1064+98 TO STA. 1065+15
 STA. 1126+25 TO STA. 1127+35



EXISTING TYPICAL SECTION

STA. 1065+15 TO STA. 1068+09
 STA. 1068+61 TO STA. 1071+45
 STA. 1120+00 TO STA. 1123+34
 STA. 1123+76 TO STA. 1126+25

* STA. 1067+02 TO STA. 1069+67

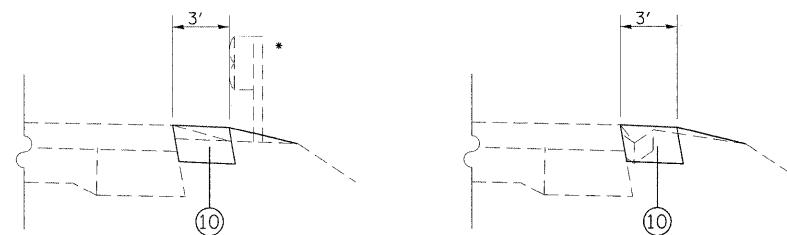


PROPOSED WIDENING FOR STAGE I CONSTRUCTION

STA. 1064+98 TO STA. 1071+45
 STA. 1120+00 TO STA. 1126+25

STA. 1126+25 TO STA. 1127+35

* STA. 1067+02 TO STA. 1069+67
 STA. 1122+10 TO STA. 1124+78



PROPOSED WIDENING FOR STAGE II CONSTRUCTION

STA. 1065+15 TO STA. 1071+45

STA. 1126+25 TO STA. 1127+35

STA. 1122+40 TO STA. 1122+86 (BITUMINOUS RAMP)

STA. 1124+45 TO STA. 1125+22 (BITUMINOUS RAMP)

STA. 1125+22 TO STA. 1126+23

* STA. 1067+02 TO STA. 1069+67
 STA. 1122+32 TO STA. 1124+99

LEGEND

- ① EXISTING PCC PAVEMENT - 9''-6''-9''
- ② EXISTING BITUMINOUS SURFACE - ±5''
- ③ EXISTING WIDENING - 9''
- ④ EXISTING AGGREGATE SHOULDER
- ⑤ EXISTING TYPE B GUTTER
- ⑥ EXISTING GUARDRAIL
- ⑦ PROPOSED HOT-MIX ASPHALT SHOULDER (VARIES)
- ⑧ PROPOSED HOT-MIX ASPHALT BINDER COURSE (VARIES)
- ⑨ PROPOSED HOT-MIX ASPHALT SURFACE COURSE - 1 1/2 ''
- ⑩ PROPOSED HOT-MIX ASPHALT BASE COURSE WIDENING - 9''
- ⑪ PROPOSED GUARDRAIL

FILE NAME =	USER NAME = harbaughrd	DESIGNED -	REVISED -	STATE OF ILLINOIS DEPARTMENT OF TRANSPORTATION	EXISTING AND STAGING TYPICAL SECTIONS			F.A.P. RTE.	SECTION	COUNTY	TOTAL SHEETS	SHEET NO.
01\pw_work\pwidot\harbaughrd\dms51889\p	h01506a.dgn	DRAWN -	REVISED -					761	104-BR-2	GREENE	82	5
PLOT SCALE = 50.0000' / IN.	CHECKED -	REVISED -	REVISED -		CONTRACT NO. 76987			FED. ROAD DIST. NO. ILLINOIS FED. AID PROJECT				
PLOT DATE = 12/18/2008	DATE -	REVISED -	REVISED -		SCALE:	SHEET NO. 1 OF 2 SHEETS	STA.	TO STA.				