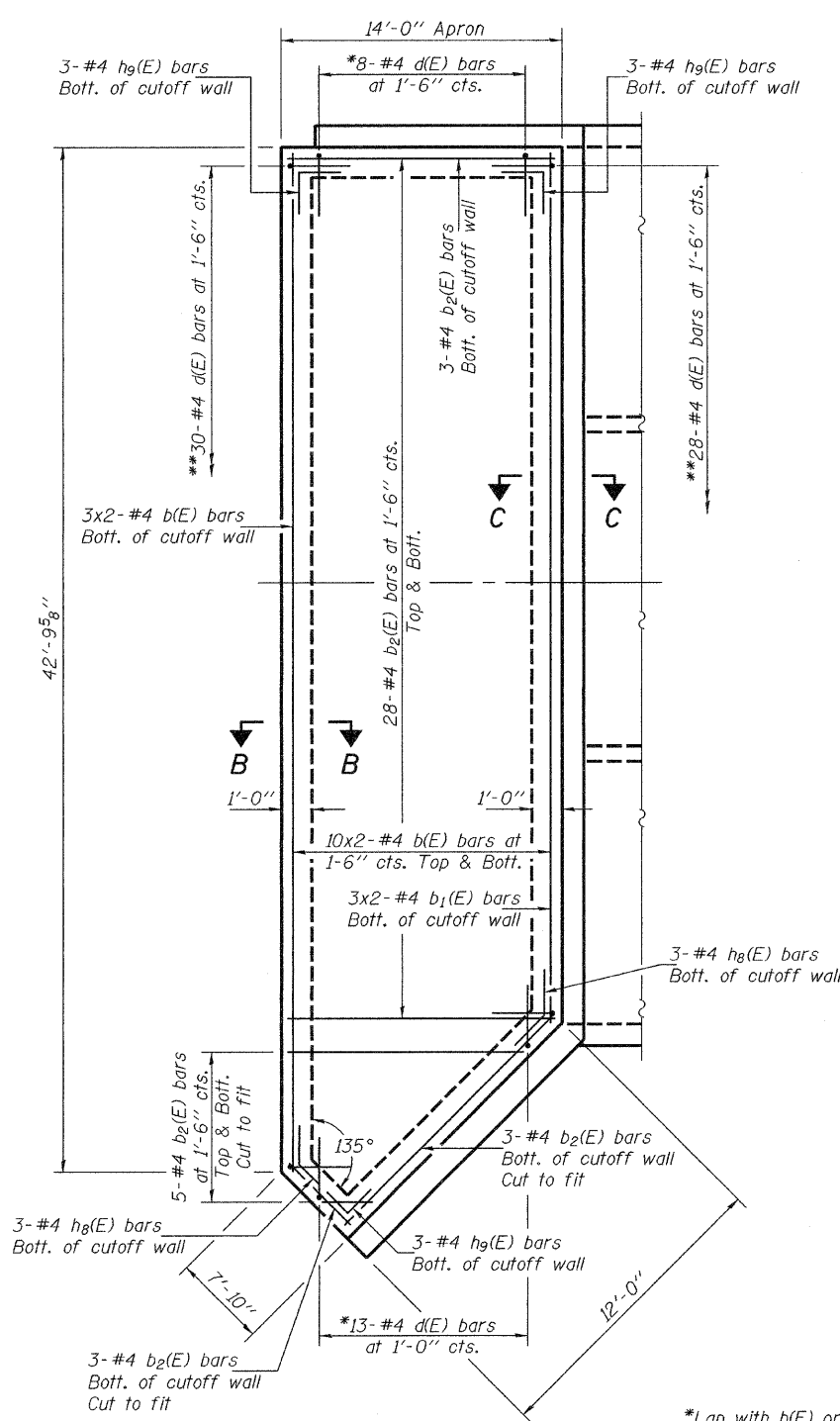
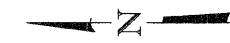
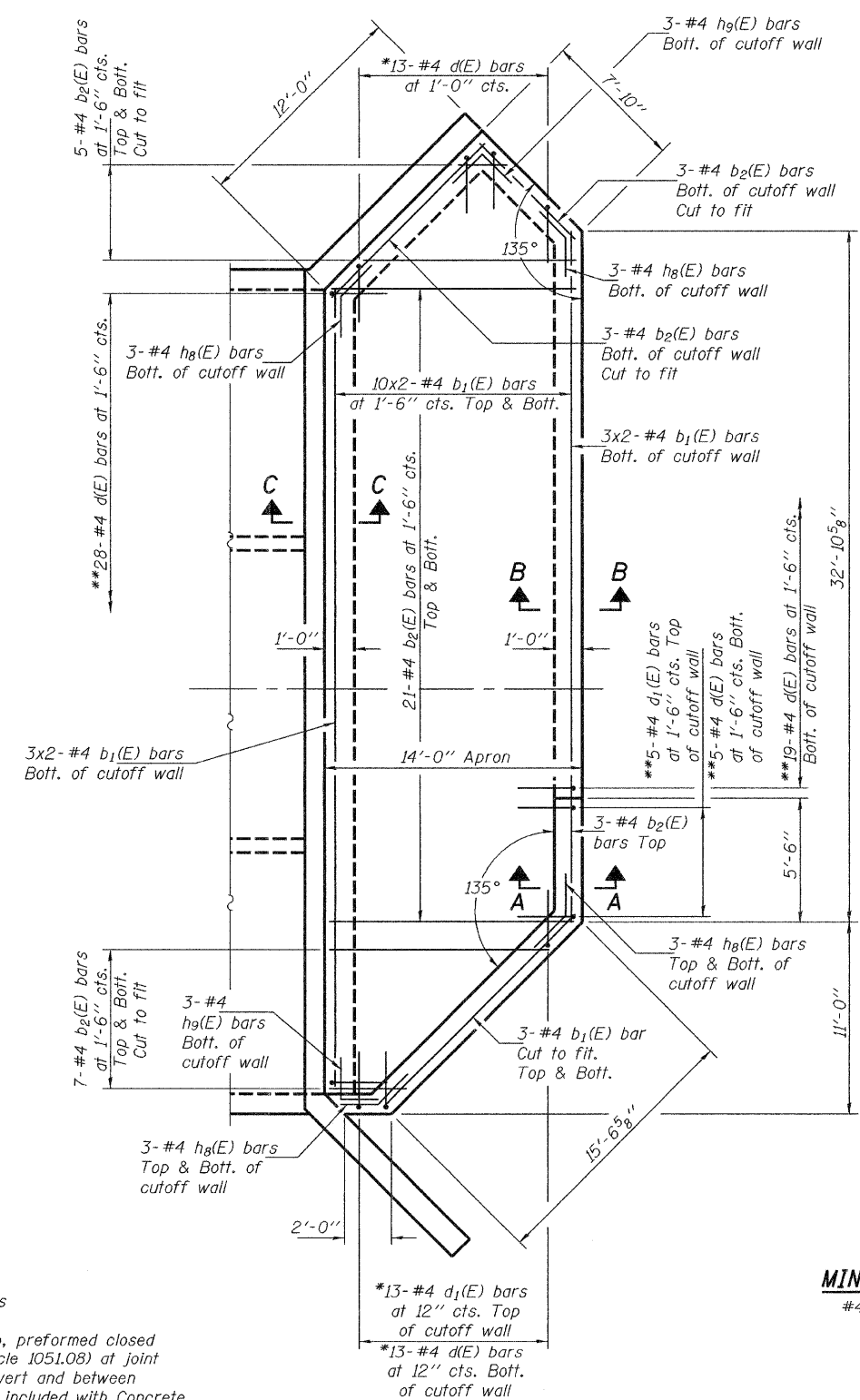


STATE OF ILLINOIS
DEPARTMENT OF TRANSPORTATION



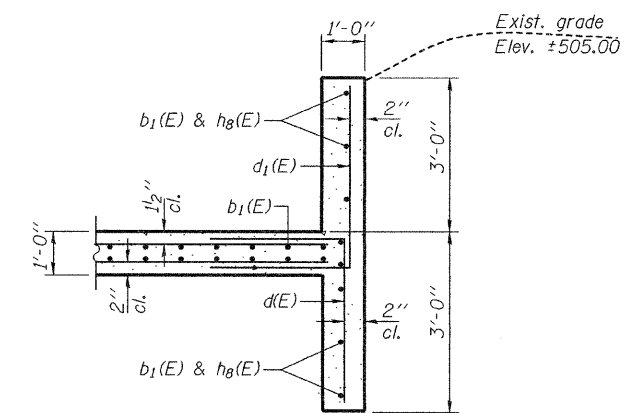
PLAN - NORTH APRON



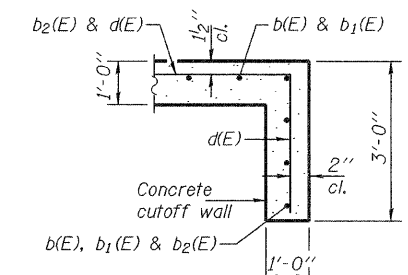
PLAN - SOUTH APRON

*Lap with b(E) or b1(E) bars
 **Lap with b2(E) bars
 ◇ Provide 1" thick by 3' deep, preformed closed cell plastic joint filler (Article 1051.08) at joint between apron and box culvert and between apron and wingwalls. Cost included with Concrete Box Culvert.

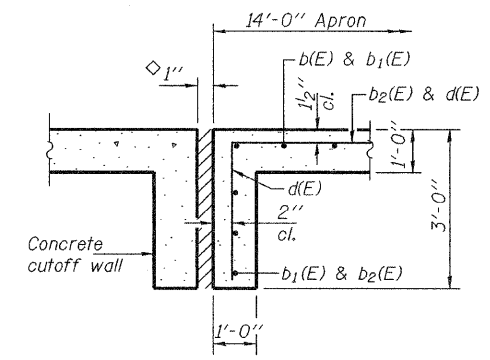
MIN. BAR LAP
 #4 bar = 1'-8"



SECTION A-A



SECTION B-B



SECTION C-C

DESIGNED	Jay D. Edwards
CHECKED	Mike D. Rolape
DRAWN	h.f. duong
CHECKED	JDE/MDR

Jan 15, 2009
 EXAMINED *Thomas J. Donagabadi*
 PASSED *Ronald E. Anderson*
 ENGINEER OF BRIDGES AND STRUCTURES

CULVERT DETAILS
 STRUCTURE NO. 031-2012

SHEET NO. 8 11 SHEETS	F.A.P. RTE.	SECTION	COUNTY	TOTAL SHEETS	SHEET NO.
	761	104-BR-2	GREENE	82	31
CONTRACT NO. 76987					
FED. ROAD DIST. NO. ILLINOIS FED. AID PROJECT					