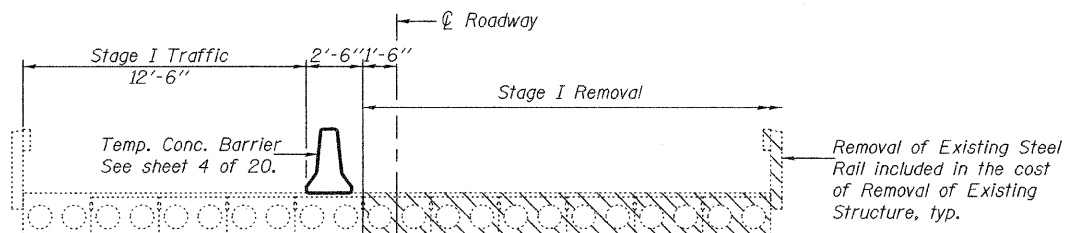


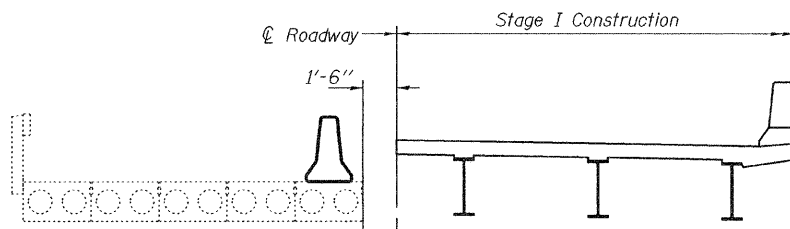
STATE OF ILLINOIS
DEPARTMENT OF TRANSPORTATION

| | | | | | |
|-----------------------|----------|--------|------------------|-----------|--------------------------|
| ROUTE NO. | SECTION | COUNTY | TOTAL SHEETS | SHEET NO. | SHEET NO. 2 20 SHEETS |
| FAP 761 | 104-BR-2 | GREENE | 82 | 51 | |
| FED. ROAD DIST. NO. 7 | ILLINOIS | | FED. AID PROJECT | | |

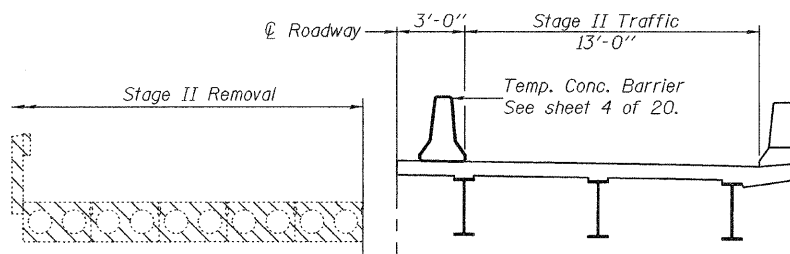
Contract #76987



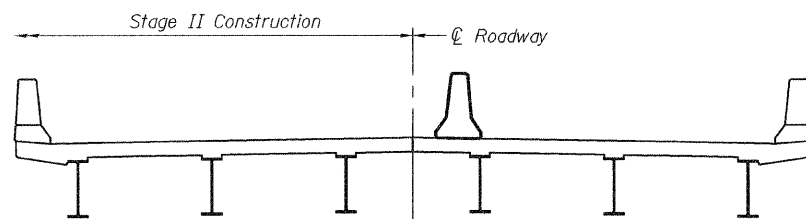
STAGE I REMOVAL



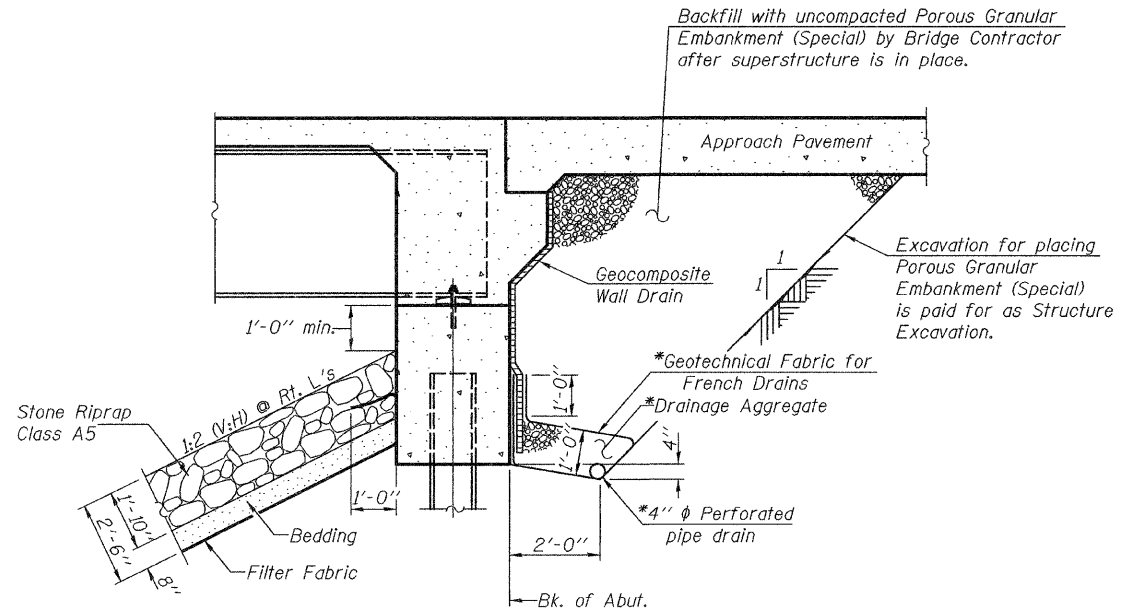
STAGE I CONSTRUCTION



STAGE II REMOVAL



STAGE II CONSTRUCTION



SECTION THRU INTEGRAL ABUTMENT
(Horiz. dim. @ Rt. L's)

*Included in the cost of Pipe Underdrains for Structures, 4".

Note:

All drainage system components shall extend to 2'-0" from the end of each wingwall except an outlet pipe shall extend until intersecting with the side slopes. The pipes shall drain into concrete headwalls. (See Article 601.05 of the Standard Specifications and Highway Standard 601101).

| | |
|----------|-------------------|
| DESIGNED | Stephen M. Ryan |
| CHECKED | Michael D. Rolape |
| DRAWN | BECKY M. LEACH |
| CHECKED | SMR/MDR |

| | | |
|----------|---|------------------|
| EXAMINED | Thomas J. Demagala ENGINEER OF PUBLIC DESIGN | January 22, 2008 |
| PASSED | Ralph E. Anderson ENGINEER OF BRIDGES AND STRUCTURES | |

Notes:
All staging cross sections are looking East.
Hatched area indicates Removal of Existing Concrete Structures.
For quantity of Temporary Concrete Barrier, see Roadway Plans.

STAGE CONSTRUCTION DETAILS
F.A.P. ROUTE 761 - SECTION 104-BR-2
GREENE COUNTY
STATION 1123+58.50
STRUCTURE NO. 031-0042