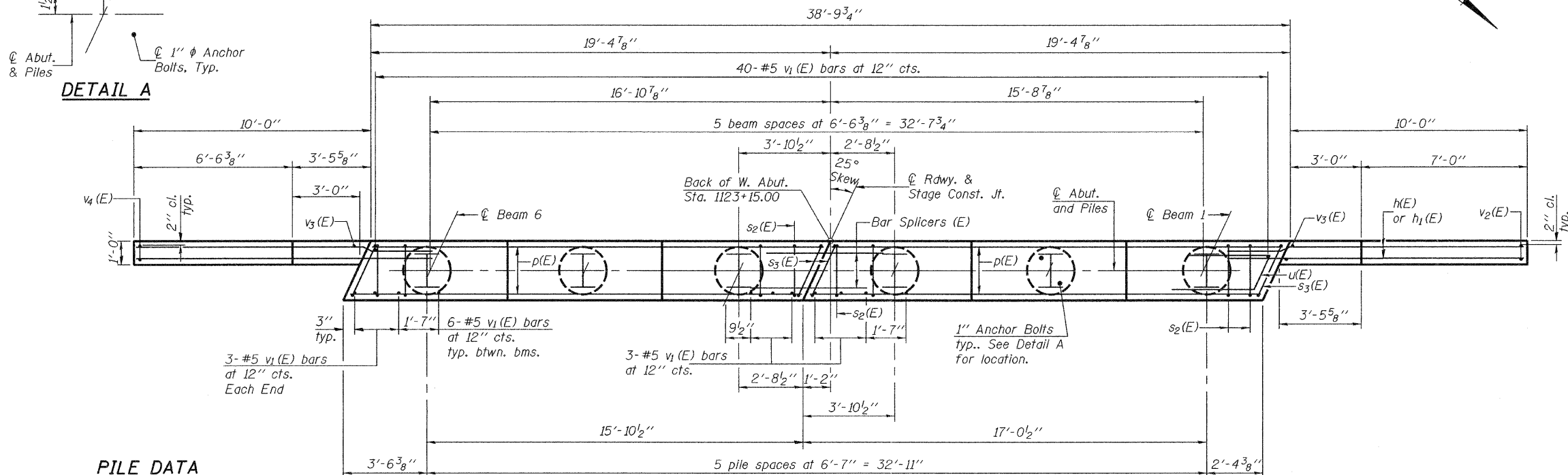
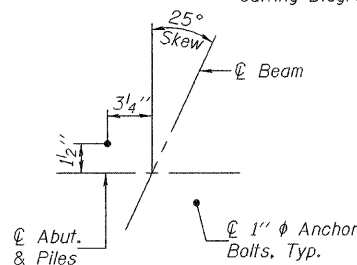
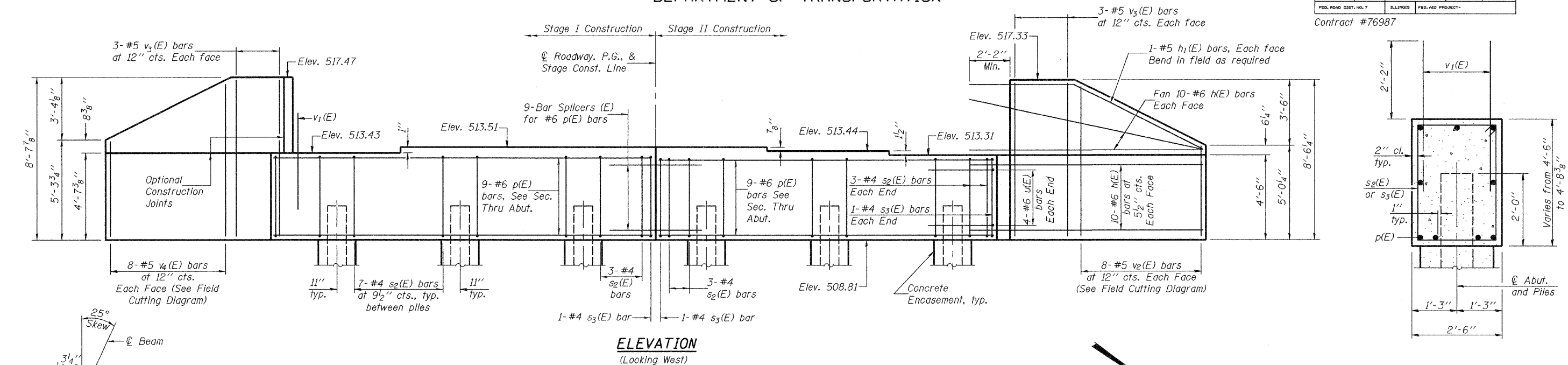


STATE OF ILLINOIS
DEPARTMENT OF TRANSPORTATION

ROUTE NO.	SECTION	COUNTY	TOTAL SHEETS	SHEET NO.	SHEET NO. 14 20 SHEETS
FAP 761	104-BR-2	GREENE	82	63	
FED. ROAD DIST. NO. 7		ILLINOIS	FED. AID PROJECT		

Contract #76987

Notes: Four steps monolithically with cap.



SEC. THRU ABUT.

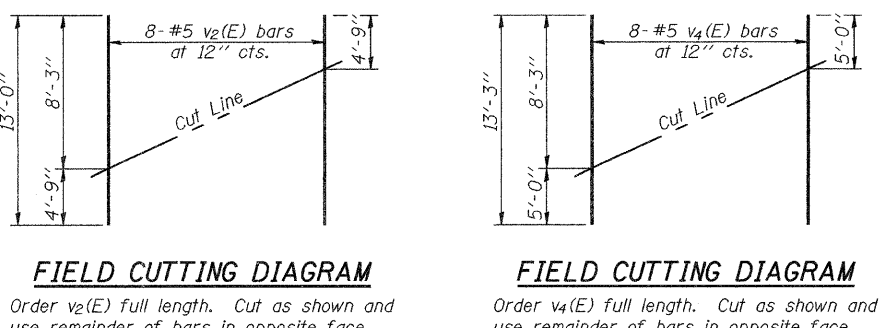
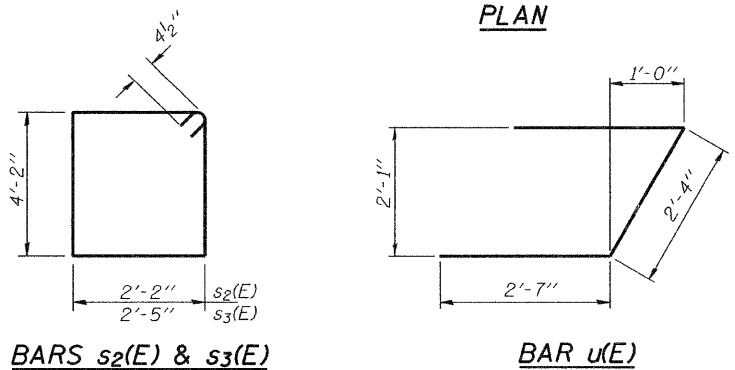
BILL OF MATERIAL

Bar	No.	Size	Length	Shape
h(E)	80	#6	12'-3"	—
h ₁ (E)	4	#5	13'-0"	—
p(E)	18	#6	19'-0"	—
s ₂ (E)	40	#4	13'-5"	□
s ₃ (E)	4	#4	13'-11"	□
u(E)	8	#6	7'-6"	┘
v ₁ (E)	76	#5	4'-4"	—
v ₂ (E)	8	#5	13'-0"	—
v ₃ (E)	12	#5	8'-3"	—
v ₄ (E)	8	#5	13'-3"	—
Structure Excavation	Cu. Yd.		31.1	
Concrete Structures	Cu. Yd.		22.0	
Reinforcement Bars, Epoxy Coated	Pound		3190	
Furnishing Piles, HP12x84	Foot		400	
Driving Piles	Foot		400	
Test Pile, HP12x84	Each		1	
Concrete Encasement	Cu. Yd.		2.1	
Anchor Bolts, 1"	Each		12	

For details of Bar Splicers, see sheet 16 of 20.
For details of piles and Concrete Encasement, see sheet 18 of 20.

PILE DATA

Type: HP12x84
Nominal Required Bearing: 374 kips
Factored Resistance Available: 187 kips
Est. Length: 80 ft.
No. Production Piles: 5
No. Test Piles: 1



WEST ABUTMENT
F.A.P. ROUTE 761 - SECTION 104-BR-2
GREENE COUNTY
STATION 1123+58.50
STRUCTURE NO. 031-0042

DESIGNED	Stephen M. Ryan	January 22, 2008
CHECKED	Michael D. Rolape	EXAMINED <i>Thomas J. Domagala</i>
DRAWN	DECKY M. LEACH	PASSED <i>Ralph E. Anderson</i>
CHECKED	SMR/MDR	ENGINEER OF BRIDGES AND STRUCTURES