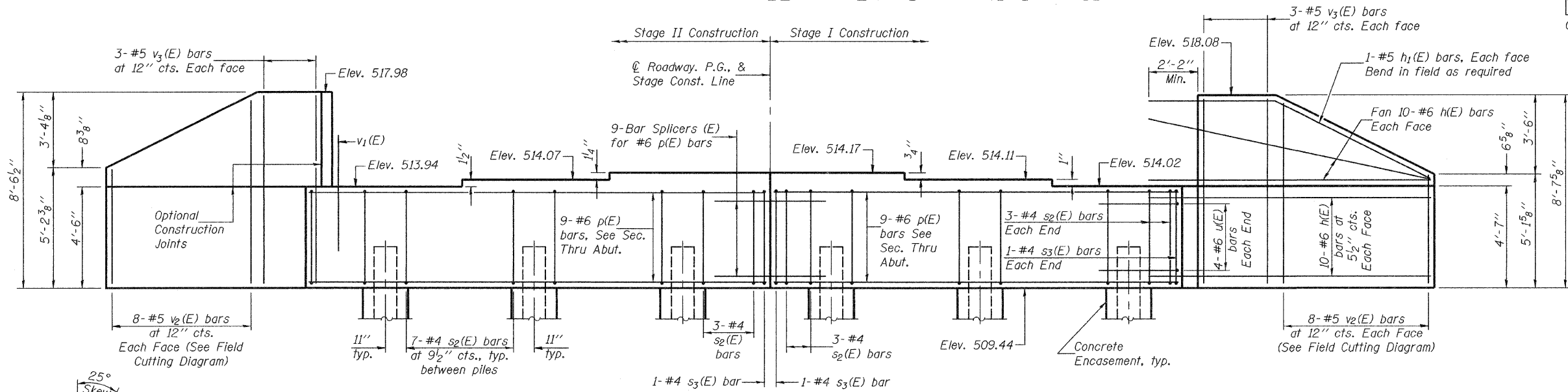


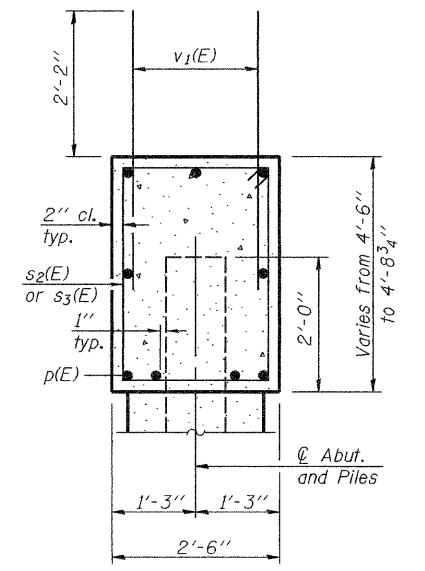
STATE OF ILLINOIS  
DEPARTMENT OF TRANSPORTATION

ROUTE NO.	SECTION	COUNTY	TOTAL SHEETS	SHEET NO.	SHEET NO. 15 20 SHEETS
FAP 761	104-BR-2	GREENE	82	64	
FED. ROAD DIST. NO. 7	ILLINOIS	FED. AID PROJECT-	Contract #76987		

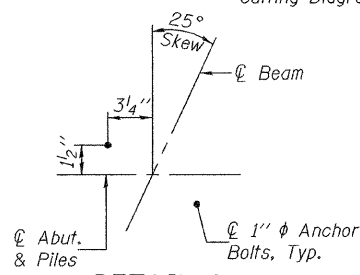
Notes: Four steps monolithically with cap.



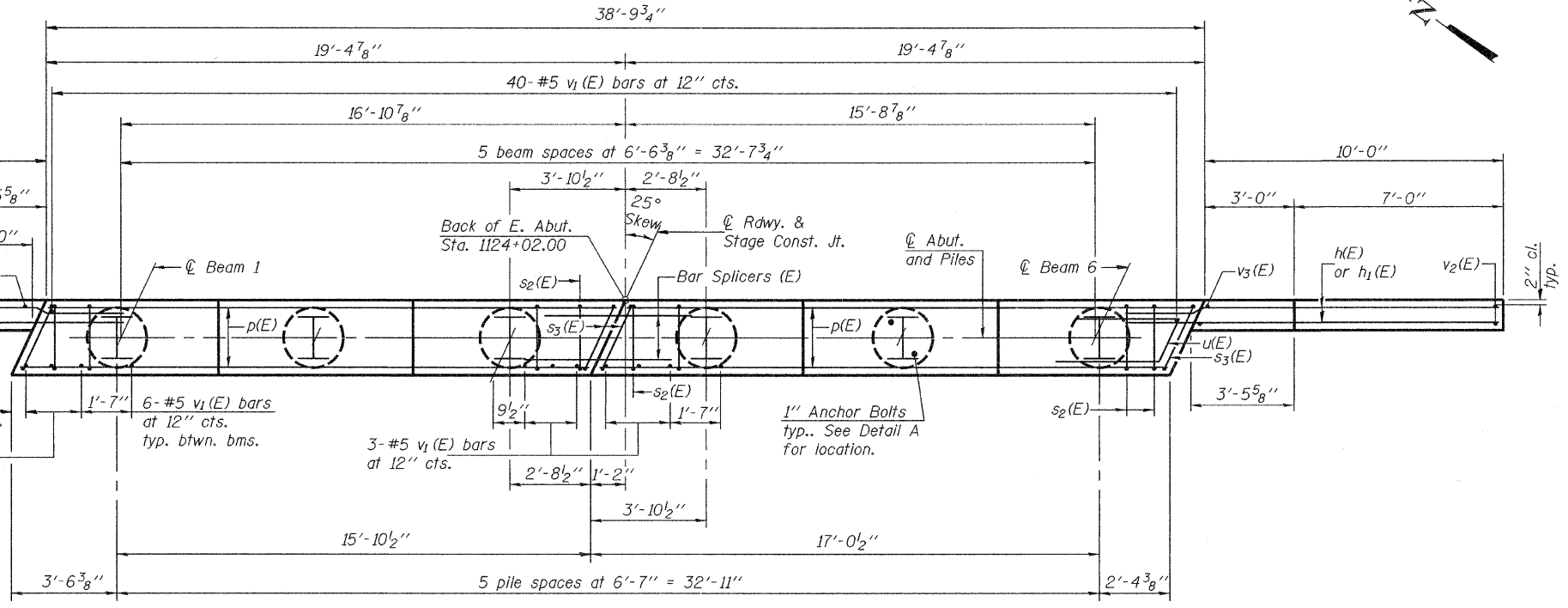
**ELEVATION**  
(Looking East)



**SEC. THRU ABUT.**



**DETAIL A**



**PLAN**

**BILL OF MATERIAL**

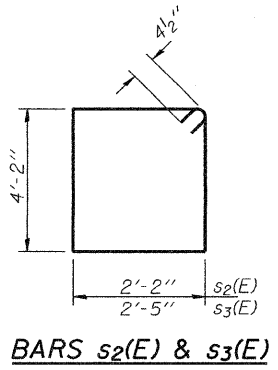
Bar	No.	Size	Length	Shape
h(E)	80	#6	12'-3"	—
h1(E)	4	#5	13'-0"	—
p(E)	18	#6	19'-0"	—
s2(E)	40	#4	13'-5"	□
s3(E)	4	#4	13'-11"	□
u(E)	8	#6	7'-6"	┘
v1(E)	76	#5	4'-4"	—
v2(E)	16	#5	13'-0"	—
v3(E)	12	#5	8'-3"	—
Structure Excavation		Cu. Yd.	41.6	
Concrete Structures		Cu. Yd.	22.0	
Reinforcement Bars, Epoxy Coated		Pound	3190	
Furnishing Piles, HP12x84		Foot	380	
Driving Piles		Foot	380	
Test Pile, HP12x84		Each	1	
Concrete Encasement		Cu. Yd.	2.1	
Anchor Bolts, 1"		Each	12	

For details of Bar Splicers, see sheet 16 of 20.  
For details of piles and Concrete Encasement, see sheet 18 of 20.

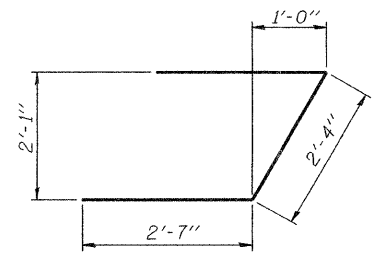
**PILE DATA**  
Type: HP12x84  
Nominal Required Bearing: 372 kips  
Factored Resistance Available: 186 kips  
Est. Length: 76 ft.  
No. Production Piles: 5  
No. Test Piles: 1

DESIGNED	Stephen M. Ryan
CHECKED	Michael D. Rolape
DRAWN	DECKY M. LEACH
CHECKED	SMR/MDR

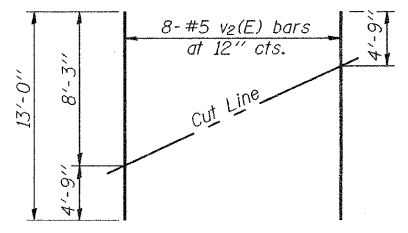
January 22, 2008  
EXAMINED *Thomas J. Domagala*  
PASSED *Ralph E. Carlson*  
ENGINEER OF BRIDGES AND STRUCTURES



**BARS s2(E) & s3(E)**



**BAR u(E)**



**FIELD CUTTING DIAGRAM**

Order v2(E) full length. Cut as shown and use remainder of bars in opposite face.

**EAST ABUTMENT**  
F.A.P. ROUTE 761 - SECTION 104-BR-2  
GREENE COUNTY  
STATION 1123+58.50  
STRUCTURE NO. 031-0042