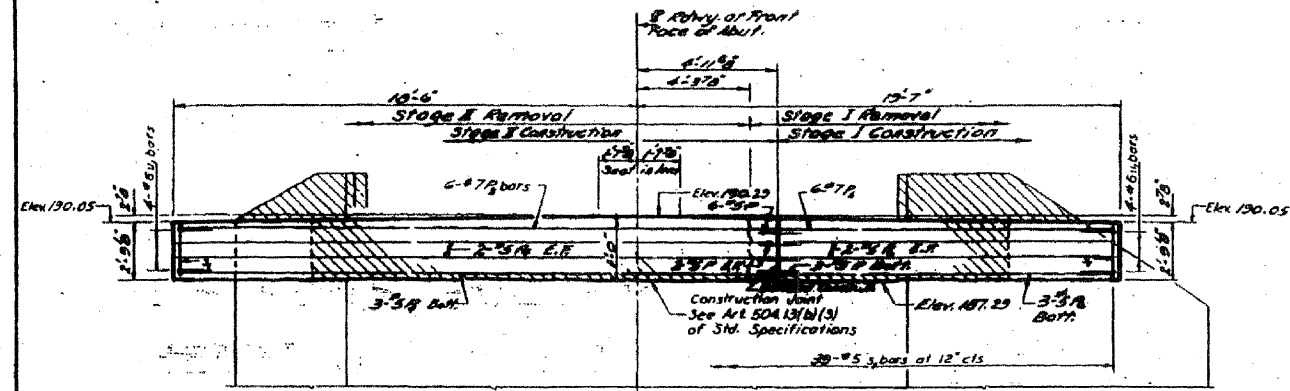
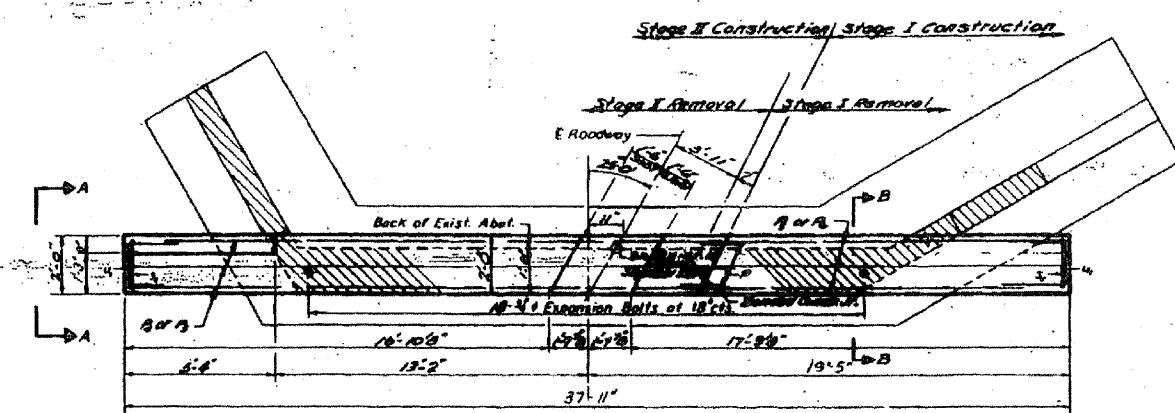


STATE OF ILLINOIS

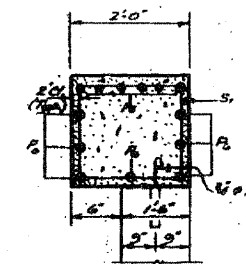
DATE	BY	CHKD	APP'D
12/10/00	GREENE	EB	EB



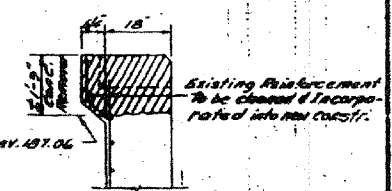
ELEVATION



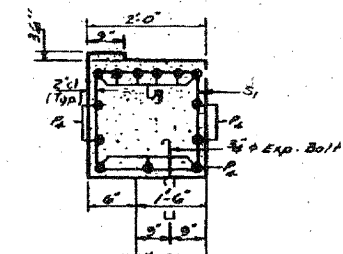
PLAN



SECTION B-B



SEC. THRU EXISTING ABUT. AT E. RDWY.



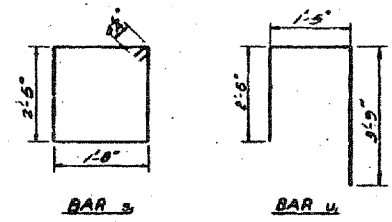
VIEW A-A

BILL OF MATERIAL

Bar	Qty	Exp. Bolt	Concrete
P	7	0	0
A	9	0	0
B	6	0	0
C	7	0	0
S	20	0	0
U	0	0	0
Class A Concrete		Cu. Yds.	7.9
Reinforcement Bars		Lbs.	1220
Expansion Bolts		Each	70
Concrete Removal		Cu. Yds.	1

Notes:
 Hatched area indicates Concrete Removal. Reinforcement extending into removed area shall be cleaned and incorporated into the new construction.
 Expansion Bolts shall be anchored in sound concrete.
 All edges shall have standard 3/4 chamfers.
 For detail of Bar P see sheet #13

DESIGNED: Paul S. W. 12/10/00
 CHECKED: Charles D. 12/10/00
 DRAWN: George M. 12/10/00
 PLOT DATE: 12/10/2000



LABORER
 P.L. ...
 ...

FOR INFORMATION ONLY

FILE NAME =	USER NAME = horbaughrd	DESIGNED -	REVISED -	STATE OF ILLINOIS DEPARTMENT OF TRANSPORTATION	STAGE CONSTRUCTION DETAILS (SN 031-0042)	F.A.P. RTE.	SECTION	COUNTY	TOTAL SHEETS	SHEET NO.	
ct:\pwork\NPI\DOT\HARBAUGH\RD\dms51889\	in@1506e.dgn	DRAWN -	REVISED -			761	104-BR-2	GREENE	82	71	
PLOT SCALE = 1/8"=1'-0"		CHECKED -	REVISED -			SCALE: NTS		SHEET NO. 71 OF 84 SHEETS		STA.	TO STA.
PLOT DATE = 12/10/2000		DATE -	REVISED -			FED. ROAD DIST. NO.		ILLINOIS FED. AID PROJECT		CONTRACT NO. 76987	