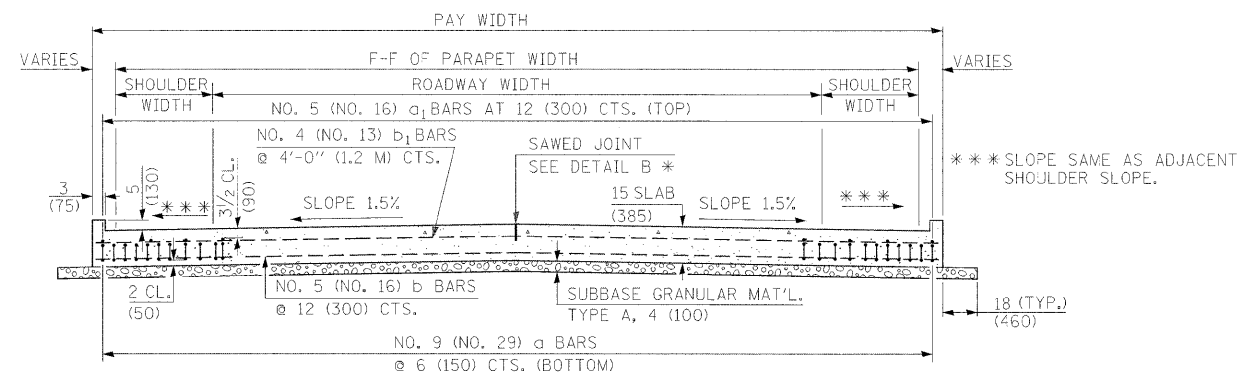


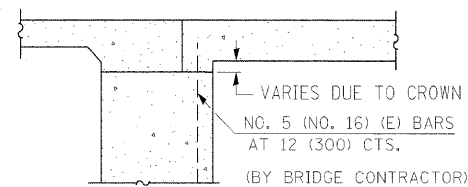
**SECTION C-C**

① STAGGER NO. 9 (NO. 29) A BARS AS SHOWN ON PLAN - FULL WIDTH



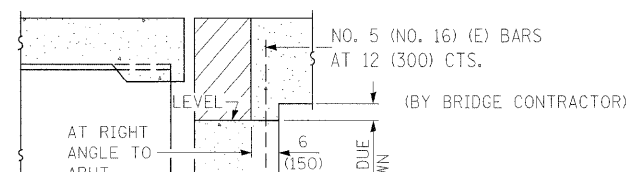
**SECTION D-D**

(SEE PLAN FOR DIMENSIONS NOT SHOWN)



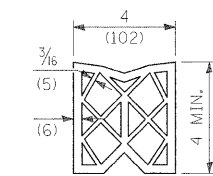
**SECTION E-E**

(INTEGRAL ABUTMENTS)

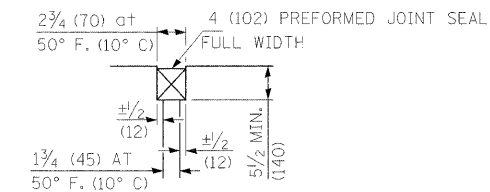


**SECTION E-E**

(JOINTED ABUTMENTS)

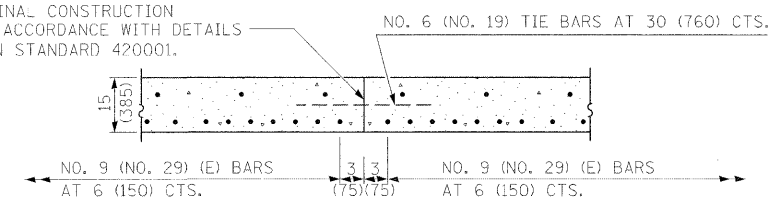


**PREFORMED JOINT SEAL**



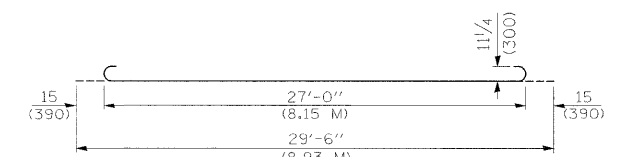
**DETAIL A**

LONGITUDINAL CONSTRUCTION JOINT IN ACCORDANCE WITH DETAILS SHOWN ON STANDARD 420001.

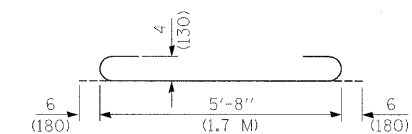


**OPTIONAL LONGITUDINAL CONSTRUCTION JOINT**

AS APPROVED BY THE ENGINEER, THE CONTRACTOR MAY ELECT TO REDUCE THE WIDTHS OF POUR BY USE OF THE OPTIONAL LONGITUDINAL CONSTRUCTION JOINT SHOWN. JOINTS SHALL BE LOCATED AT THE EDGE OF A TRAFFIC LANE.



**BAR a**



**BAR a<sub>2</sub>**

**DESIGN STRESSES**

f<sub>y</sub> = 60,000 P.S.I. (400 MPA)  
 f'c = 3,500 P.S.I. (24 MPA)  
 n = 8.5

FILE NAME =	USER NAME = harbaughrd	DESIGNED -	REVISED -	<b>STATE OF ILLINOIS DEPARTMENT OF TRANSPORTATION</b>	<b>MISCELLANEOUS DETAILS BRIDGE APPROACH PAVEMENT DETAIL</b>			F.A.P. RTE.	SECTION	COUNTY	TOTAL SHEETS	SHEET NO.
at:\pw\work\pav\dos\harbaughrd\dms51889\p	h01506a.dgn	DRAWN -	REVISED -					761	104-BR-2	GREENE	82	76
PLOT SCALE = 50.0000' / IN.		CHECKED -	REVISED -					<b>CONTRACT NO. 76987</b>				
PLOT DATE = 12/18/2008		DATE -	REVISED -					SCALE:	SHEET NO. 3 OF 4 SHEETS	STA.	TO STA.	FED. ROAD DIST. NO.