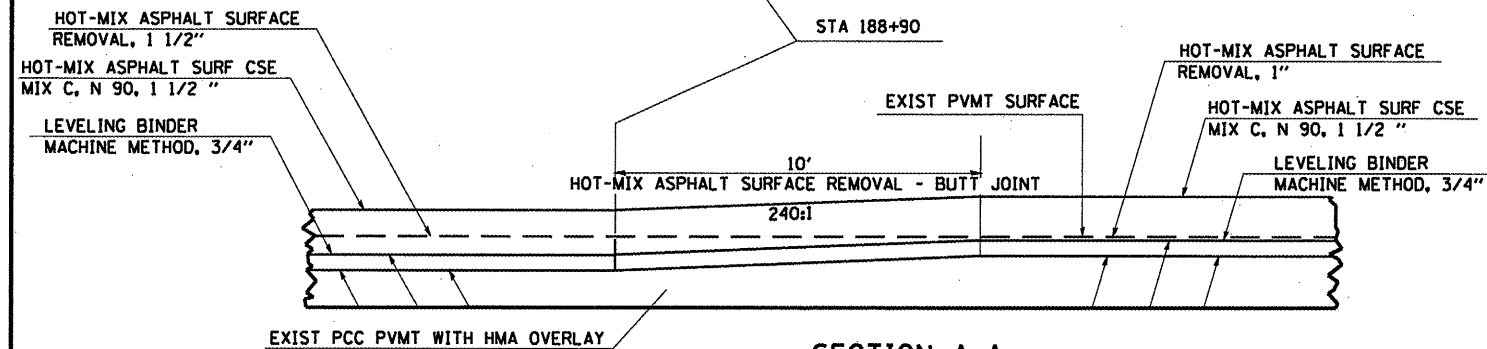
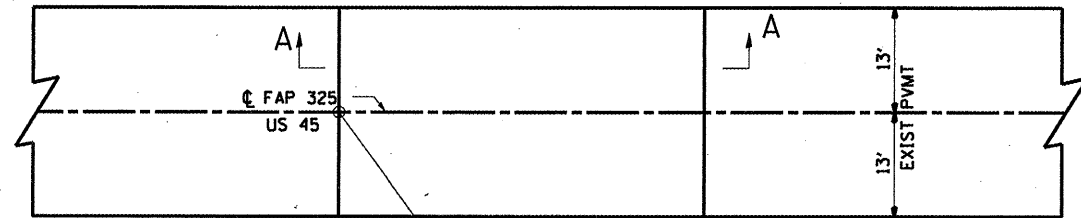


PAVEMENT TRANSITION DETAIL

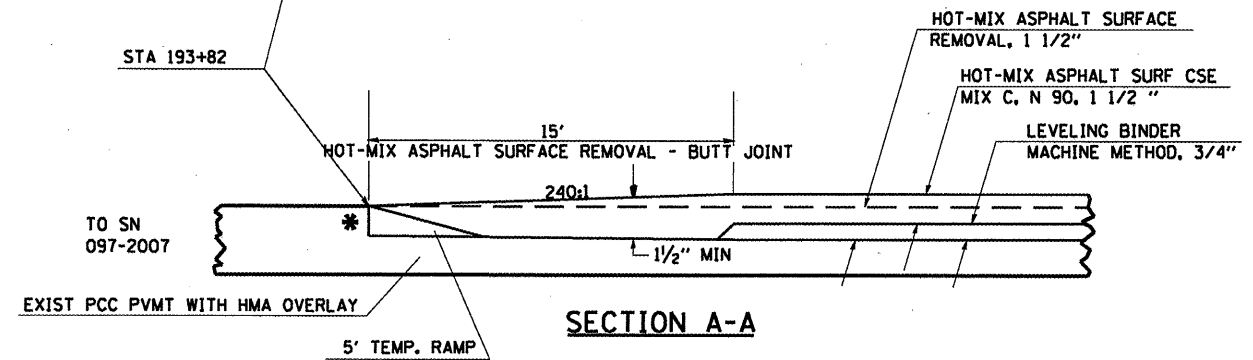
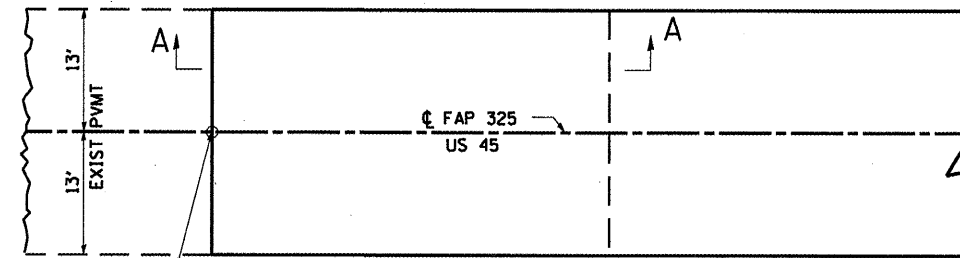
STA. 188+90 TO STA. 189+00



SECTION A-A

BUTT JOINT

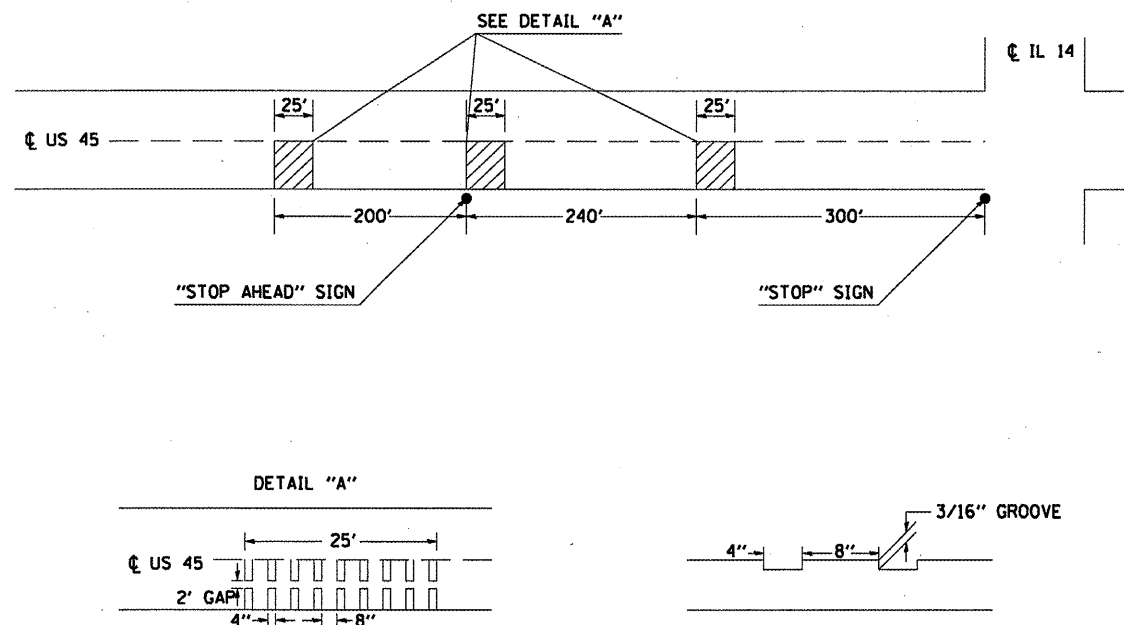
FOR GAPPING STRUCTURE NUMBER 097-2007
STA. 193+67 TO STA. 193+82



SECTION A-A

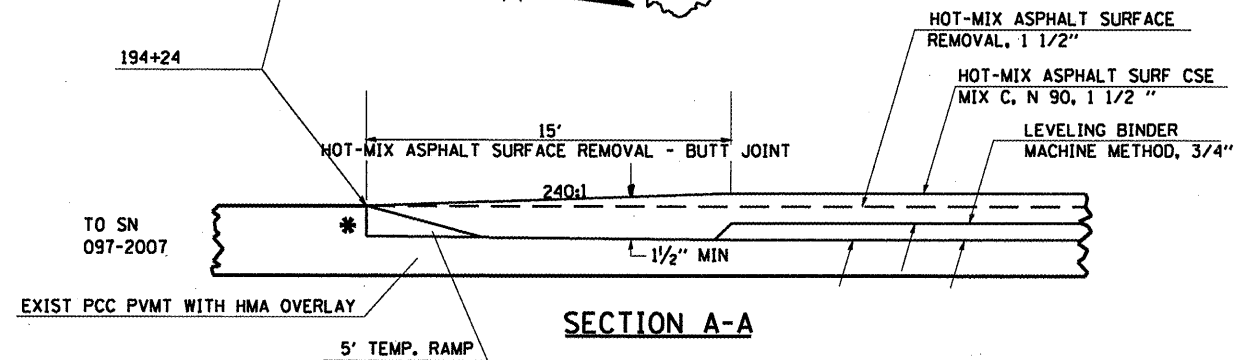
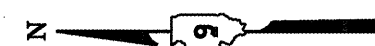
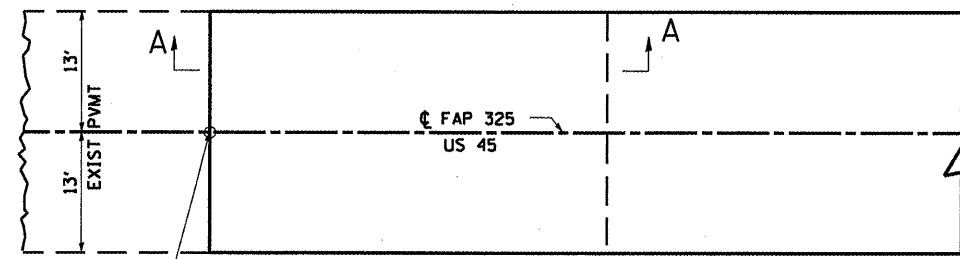
*SAW CUT SHALL BE INCLUDED IN THE COST OF HMA SURFACE REMOVAL.

RUMBLE STRIP DETAIL



BUTT JOINT

FOR GAPPING STRUCTURE NUMBER 097-2007
STA. 194+24 TO STA. 194+39



SECTION A-A

*SAW CUT SHALL BE INCLUDED IN THE COST OF HMA SURFACE REMOVAL.

FILE NAME =
c:\pwork\pwork\shepard\dm549876\d

USER NAME = shepardgd
78066_sht_miso.dgn
PLOT SCALE = 100.0000 / IN.
PLOT DATE = 12/4/2008

DESIGNED -	---	REVISED -	---
DRAWN -	---	REVISED -	---
CHECKED -	---	REVISED -	---
DATE -	---	REVISED -	---

STATE OF ILLINOIS
DEPARTMENT OF TRANSPORTATION

BUTT JOINT, PAVEMENT TRANSITION AND RUMBLE STRIP DETAILS

SCALE: SHEET NO. 13 OF 14 SHEETS STA. TO STA.

F.A.P. RTE.	SECTION	COUNTY	TOTAL SHEETS	SHEET NO.
328	109RS-2	WHITE	15	14
CONTRACT NO. 78066				
FED. ROAD DIST. NO. ILLINOIS FED. AID PROJECT				