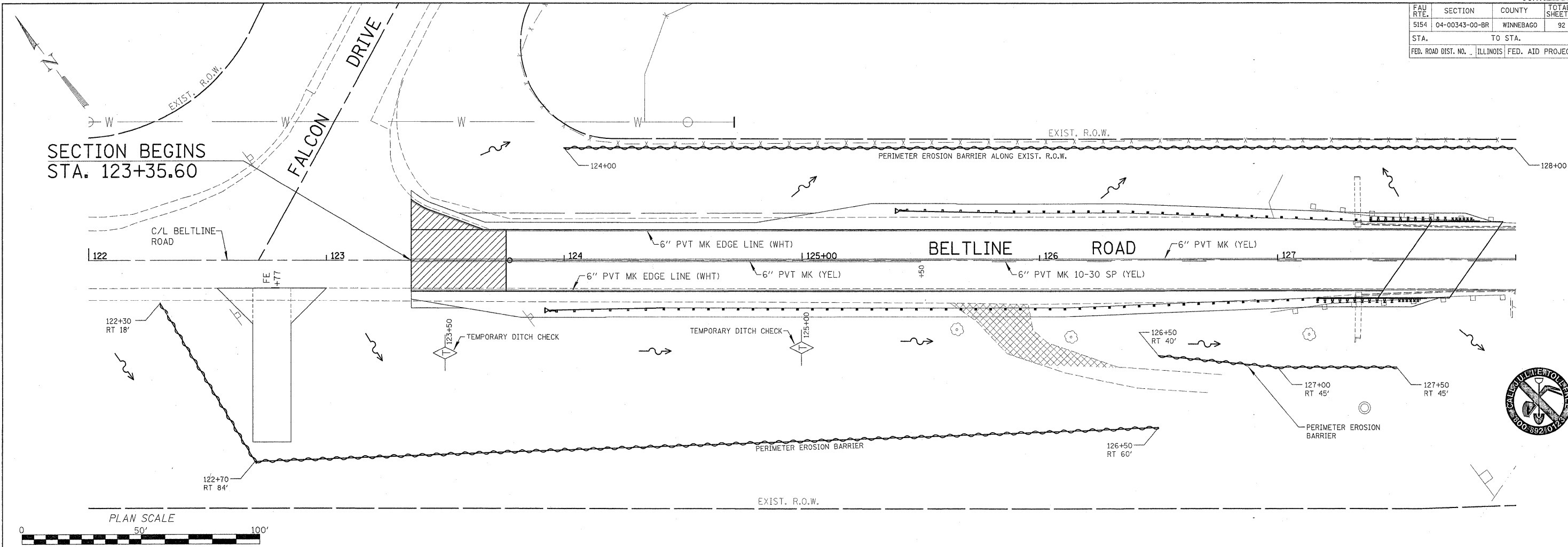


FAU RTE.	SECTION	COUNTY	TOTAL SHEETS	SHEET NO.
5154	04-00343-00-BR	WINNEBAGO	92	17
STA.		TO STA.		
FED. ROAD DIST. NO.		ILLINOIS FED. AID PROJECT		



DATE	BY
DATE	BY
DATE	BY

DATE	BY
DATE	BY
DATE	BY



**STORM WATER POLLUTION PREVENTION PLAN**

THE FOLLOWING PLAN IS ESTABLISHED AND INCORPORATED IN THE PROJECT TO DIRECT THE CONTRACTOR IN THE PLACEMENT OF TEMPORARY EROSION CONTROL SYSTEMS AND TO PROVIDE A STORM SEWER WATER POLLUTION PREVENTION PLAN FOR COMPLIANCE UNDER NPDES.

THE PURPOSE OF THIS PLAN IS TO MINIMIZE EROSION WITHIN THE CONSTRUCTION SITE AND TO LIMIT SEDIMENTS FROM LEAVING THE CONSTRUCTION SITE BY UTILIZING PROPER TEMPORARY EROSION CONTROL SYSTEMS AND PROVIDING GROUND COVER WITHIN A REASONABLE AMOUNT OF TIME

CERTAIN EROSION CONTROL FACILITIES SHALL BE INSTALLED BY THE CONTRACTOR AT THE BEGINNING OF CONSTRUCTION. OTHER ITEMS SHALL BE INSTALLED BY THE CONTRACTOR AS DIRECTED BY THE ENGINEER ON A CASE BY CASE SITUATION DEPENDING ON THE CONTRACTOR'S SEQUENCE OF ACTIVITIES, TIME OF YEAR, AND EXPECTED WEATHER CONDITIONS.

THE CONTRACTOR SHALL INSTALL PERMANENT EROSION CONTROL SYSTEMS AND SEEDING WITHIN A TIME FRAME SPECIFIED HEREIN AND AS DIRECTED BY THE ENGINEER, THEREFORE MINIMIZING THE AMOUNT OF AREA SUSCEPTIBLE TO EROSION AND REDUCING THE AMOUNT OF TEMPORARY SEEDING. THE ENGINEER WILL DETERMINE IF ANY TEMPORARY EROSION CONTROL SYSTEMS SHOWN IN THE PLAN CAN BE DELETED AND IF ANY ADDITIONAL TEMPORARY EROSION CONTROL SYSTEMS, WHICH ARE NOT INCLUDED IN THIS PLAN, SHALL BE ADDED. THE CONTRACTOR SHALL PERFORM ALL WORK AS DIRECTED BY THE ENGINEER AND AS SHOWN IN STANDARD 280001 OF THE PLANS.

SECTION 280, TEMPORARY EROSION CONTROL, OF THE STANDARD SPECIFICATIONS ADDITIONALLY SUPPLEMENTS THIS PLAN.

**SITE DESCRIPTION**

**DESCRIPTION OF CONSTRUCTION ACTIVITY:**

- THE PROJECT CONSISTS OF REPLACING THE EXISTING FOUR SPAN BRIDGE OVER THE KISKAUKEE RIVER AND THE EXISTING THREE SPAN BEAM BRIDGE OVER THE ILLINOIS RAILNET RAILROAD (FORMERLY BNSF). THE STRUCTURE OVER THE RAILROAD WILL BE RAISED TO ACCOMMODATE THE REQUIRED 23-FOOT CLEARANCE OVER THE RAILS. IN ADDITION, THE ROADWAY BETWEEN THE STRUCTURES WILL BE RESURFACED AND GUARDRAIL WILL BE INSTALLED TO MEET CURRENT DESIGN POLICIES. A FIELD ENTRANCE WILL BE RELOCATED DUE TO GUARDRAIL INSTALLATION. BENDWAY WEIRS WILL BE INSTALLED ON THE UPSTREAM EAST BANK ON THE RIVER TO PREVENT EROSION AT THE EAST ABUTMENT.
- CONSTRUCTION INCLUDES EARTH EXCAVATION (SPECIAL), DRIVEWAYS, PIPE CULVERTS, VARIOUS PAVEMENT ITEMS AND OTHER MISCELLANEOUS ITEMS OF CONSTRUCTION.

**DESCRIPTION OF INTENDED SEQUENCE FOR MAJOR CONSTRUCTION ACTIVITIES WHICH WILL DISTURB SOILS FOR MAJOR PORTIONS OF THE CONSTRUCTION SITE:**

- REMOVAL OF EXISTING BRIDGES.
- CONSTRUCTING ABUTMENTS
- TREE AND BRUSH REMOVAL
- EARTHWORK ON APPROACHES

**AREA OF CONSTRUCTION SITE:**

THE TOTAL AREA OF THE CONSTRUCTION IS ESTIMATED TO BE 5.30 ACRES OF WHICH 5.30 ACRES WILL BE DISTURBED BY EXCAVATION, GRADING, AND OTHER ACTIVITIES.

**OTHER REPORTS, STUDIES AND PLANS WHICH AID IN THE DEVELOPMENT OF THE STORM SEWER POLLUTION PREVENTION PLAN AS REFERENCED DOCUMENTS:**

- INFORMATION OF THE SOILS AND TERRAIN WITHIN THE SITE WAS OBTAINED FROM TOPOGRAPHIC SURVEYS AND SOIL BORINGS THAT WERE UTILIZED FOR THE DEVELOPMENT OF THE PROPOSED TEMPORARY EROSION CONTROL SYSTEMS.
- PROJECT PLANS, DOCUMENTS, SPECIFICATIONS AND SPECIAL PROVISIONS, AND PLAN DRAWINGS INDICATING DRAINAGE PATTERNS AND APPROXIMATE SLOPES ANTICIPATED AFTER GRADING ACTIVITIES WERE UTILIZED FOR THE PROPOSED PLACEMENT OF THE TEMPORARY EROSION CONTROL SYSTEMS.

**DRAINAGE TRIBUTARIES AND SENSITIVE AREAS RECEIVING RUNOFF FROM THIS CONSTRUCTION SITE:**

- DITCH OUTLETS AND CULVERT FLOWS INTO THE KISKAUKEE RIVER

**CONTROLS - EROSION CONTROLS AND SEDIMENT CONTROL**  
**DESCRIPTION OF STABILIZATION PRACTICES AT THE BEGINNING OF CONSTRUCTION**

- THE DRAWINGS, SPECIFICATIONS AND SPECIAL PROVISIONS WILL ENSURE THAT EXISTING VEGETATION IS PRESERVED WHERE ATTAINABLE AND DISTURBED PORTIONS OF THE SITE WILL BE STABILIZED. STABILIZATION PRACTICES INCLUDE: TEMPORARY SEEDING, PERMANENT SEEDING, MULCHING, PERIMETER EROSION BARRIER, AND OTHER APPROPRIATE MEASURES AS DIRECTED BY THE ENGINEER. STABILIZATION MEASURES SHALL BE INITIATED AS SOON AS PRACTICABLE IN PORTIONS OF THE SITE WHERE CONSTRUCTION ACTIVITIES HAVE TEMPORARILY OR PERMANENTLY CEASED, BUT IN NO CASE MORE THAN 7 DAYS AFTER THE CONSTRUCTION ACTIVITY IN THAT PORTION OF THE SITE HAS TEMPORARILY OR PERMANENTLY CEASED.
  - AREAS OF EXISTING VEGETATION (WOOD AND GRASSLANDS) OUTSIDE THE PROPOSED CONSTRUCTION LIMITS SHALL BE IDENTIFIED BY THE ENGINEER FOR PRESERVING AND SHALL BE PROTECTED FROM CONSTRUCTION ACTIVITIES.
  - DEAD, DISEASED, OR UNSUITABLE VEGETATION WITHIN THE SITE SHALL BE REMOVED AS DIRECTED BY THE ENGINEER, ALONG WITH REQUIRED TREE REMOVAL.
  - AS SOON AS REASONABLE ACCESS IS AVAILABLE TO ALL LOCATIONS WHERE WATER DRAINS AWAY FROM THE PROJECT, TEMPORARY DITCH CHECKS AND PERIMETER EROSION BARRIER SHALL BE INSTALLED AS CALLED OUT IN THIS PLAN AND DIRECTED BY THE ENGINEER.
  - BARE AND SPARSELY VEGETATED GROUND IN HIGH ERODABLE AREAS AS DETERMINED BY THE ENGINEER SHALL BE TEMPORARILY SEEDED AT THE BEGINNING OF CONSTRUCTION WHERE NO CONSTRUCTION ACTIVITIES ARE EXPECTED WITHIN SEVEN DAYS.
  - IMMEDIATELY AFTER TREE REMOVAL IS COMPLETED, AREAS WHICH ARE HIGHLY ERODABLE AS DETERMINED BY THE ENGINEER, SHALL BE TEMPORARILY SEEDED WHEN NO CONSTRUCTION ACTIVITIES ARE EXPECTED WITHIN SEVEN DAYS.
  - AT LOCATIONS WHERE A SIGNIFICANT AMOUNT OF WATER DRAINS INTO THE CONSTRUCTION ZONE FROM OUTSIDE AREAS (ADJACENT LANDOWNERS), TEMPORARY DITCH CHECKS WILL BE UTILIZED TO LOCALLY DIVERT WATER, REDUCE FLOW RATES, AND COLLECT OUTSIDE SILTATION INSIDE THAT RIGHT-OF-WAY LINE.
- ESTABLISHMENT OF THESE TEMPORARY EROSION CONTROL MEASURES WILL HAVE ADDITIONAL BENEFITS TO THE PROJECT. DESIRABLE GRASS SEED WILL BECOME ESTABLISHED IN THESE AREAS AND WILL SPREAD SEEDS ONTO THE CONSTRUCTION SITE UNTIL PERMANENT SEEDING/MOWING AND OVERSEEDING CAN BE COMPLETED.

**LEGEND**

- TEMPORARY DITCH CHECK
- EROSION CONTROL BLANKET
- PERIMETER EROSION BARRIER - SILT FILTER FENCE OR OTHER AS APPROVED BY THE ENGINEER

NOTE: ALL ITEMS SHALL BE CONSTRUCTED AS SHOWN ON STANDARD 280001 AND AS DIRECTED BY THE ENGINEER. MAINTENANCE AND CLEANING OF THE EROSION CONTROL ITEMS SHALL BE INCLUDED IN THE RESPECTIVE EROSION CONTROL PAY ITEM.

CONTINUED NEXT SHEET

STORM WATER  
POLLUTION  
PREVENTION PLAN

DATE = #DATE#  
FILE NAME = #FILE#  
PLOT SCALE = #SCALE#  
REFERENCE = #REF#