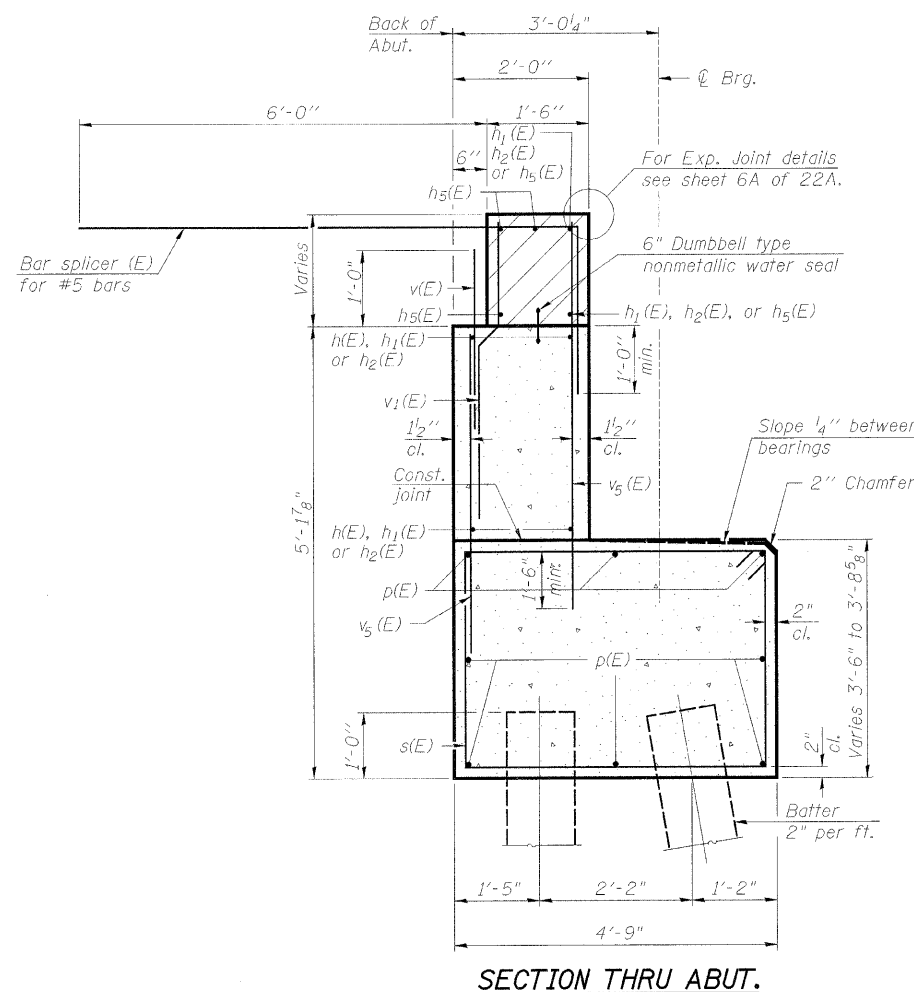
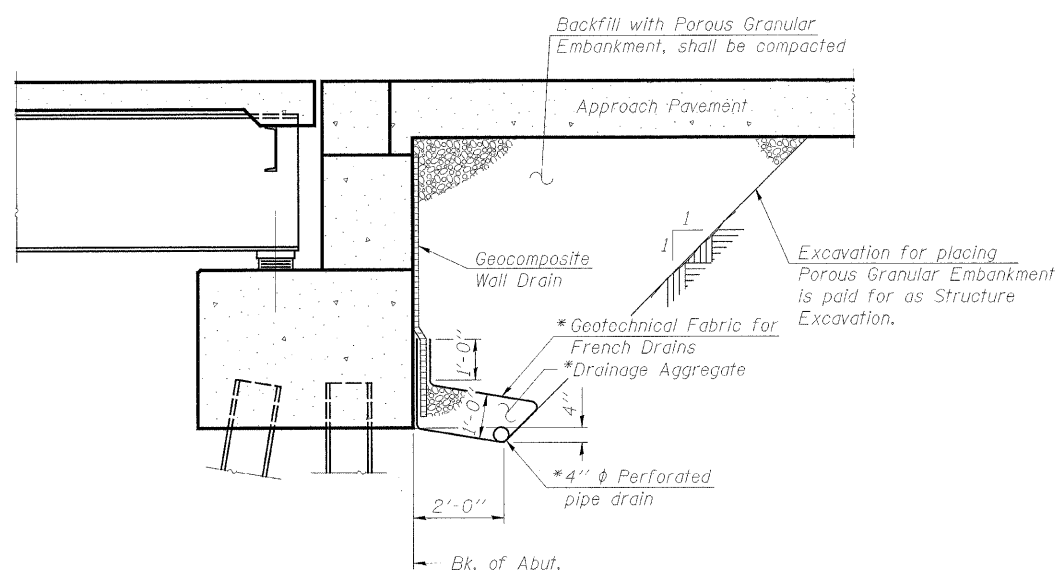
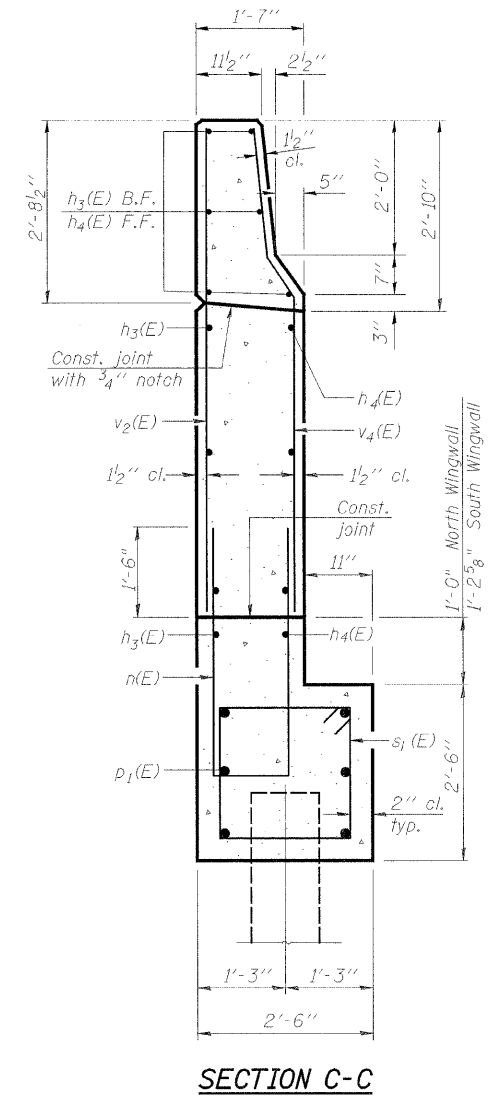
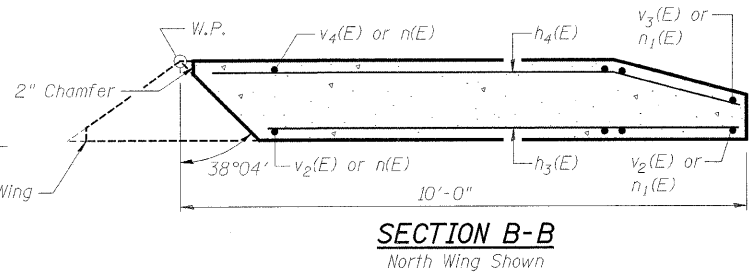
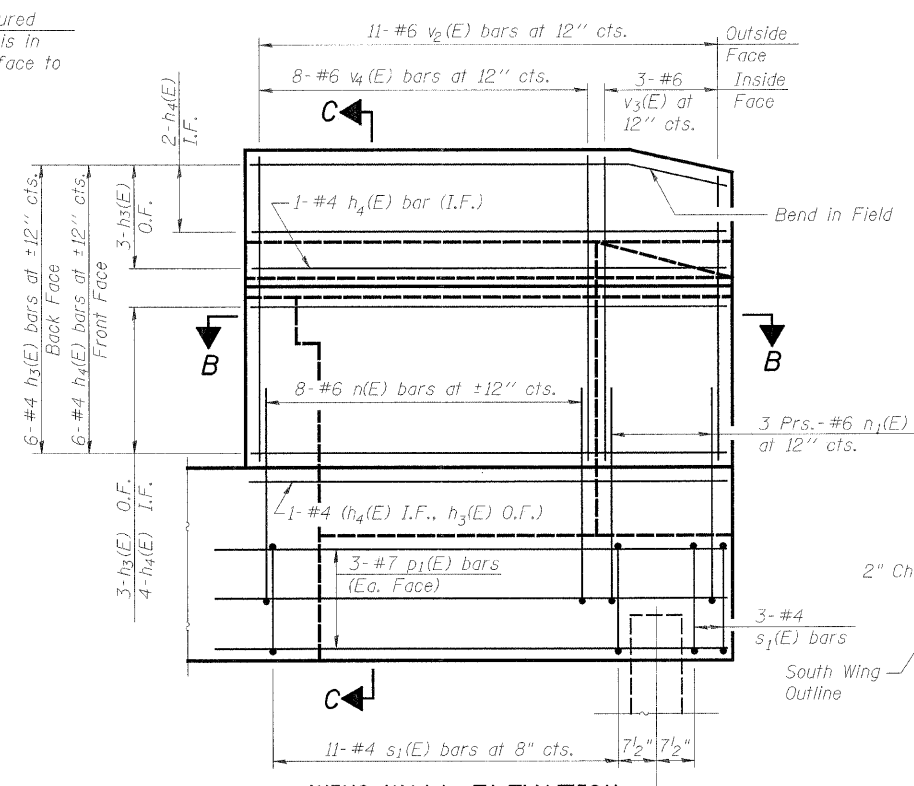
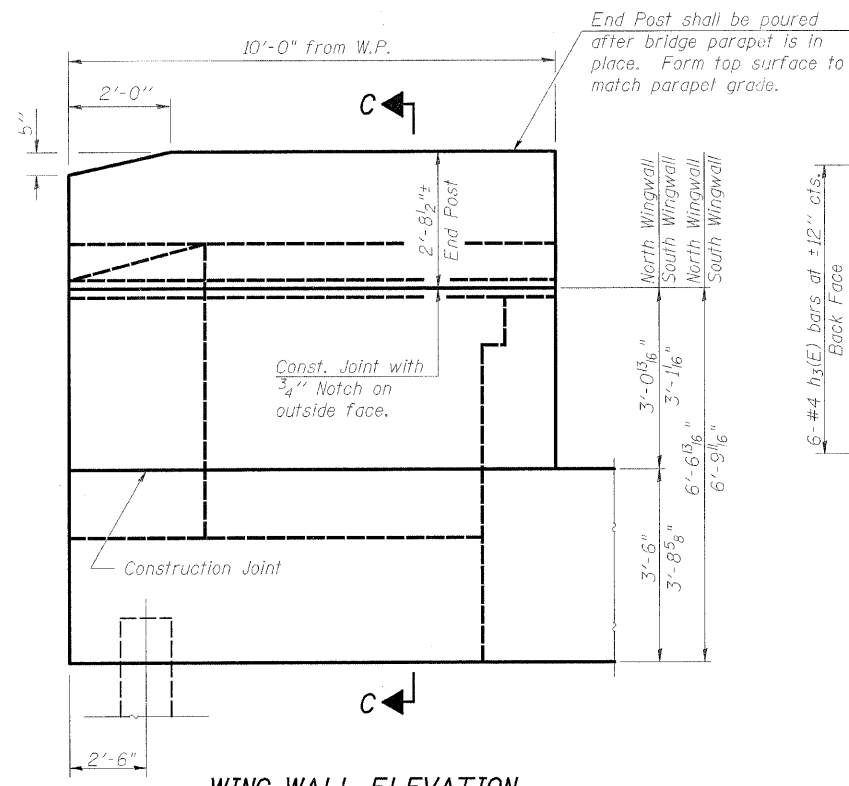


PROJECT NO.	SECTION	COUNTY	SHEET
5154	04-00343-00-BR	WINNEBAGO	92 37
FED. ROAD DIST. NO. 7		ILL. DIST.	FED. AID PROJECT-BRM-5099(75)

Structural Sheet 13A of 22A



NOTES:

Hatched area to be poured after superstructure false work has been removed. Quantity of concrete included with Concrete Superstructure.

Space reinforcement in cap to miss anchor bolts.

Pour steps monolithically with cap.

Quantity of concrete in end post included with Concrete Superstructure on Structural Sheet 5A of 22A.

WEST ABUTMENT DETAILS
BELTLINE ROAD OVER ILLINOIS RAILNET
FAU ROUTE 5154 SECTION 04-00343-00-BR
WINNEBAGO COUNTY
STA. 148+18.00 (S.N. 101-0172)