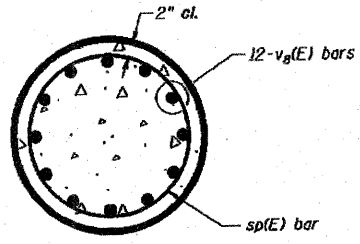
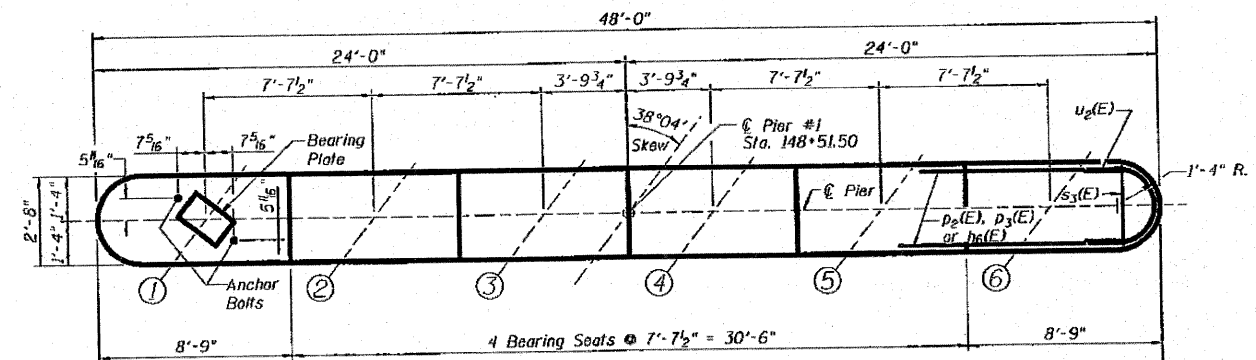


PROJECT	SECTION	COUNTY	SHEET	TOTAL
5154	04-00343-00-BR	WINNEBAGO	92	41
FED. PROJ. DIST. NO. 7		STATE	FED. AID PROJECT - BRM-50991751	

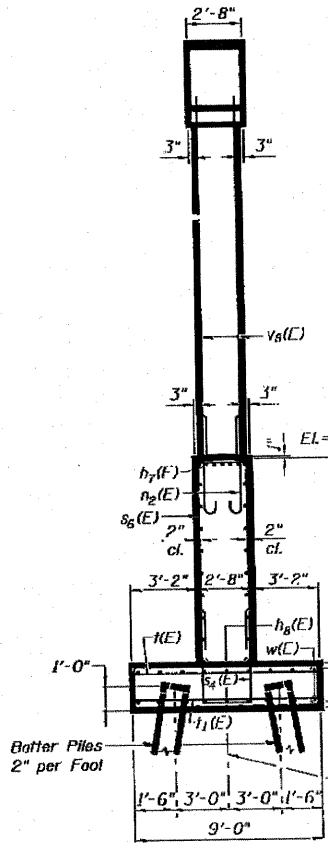
Structural Sheet 17A of 22A



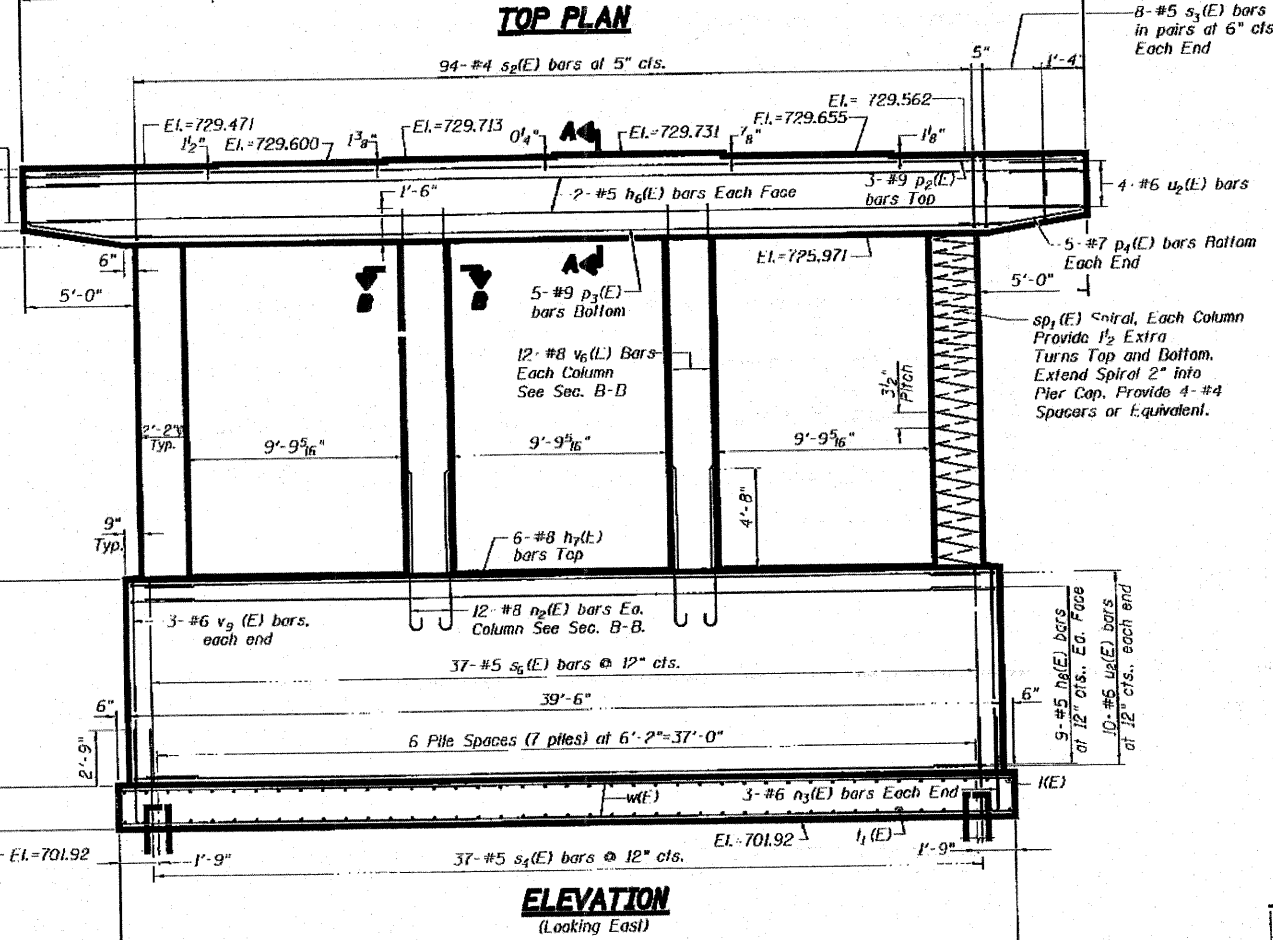
SEC. B-B



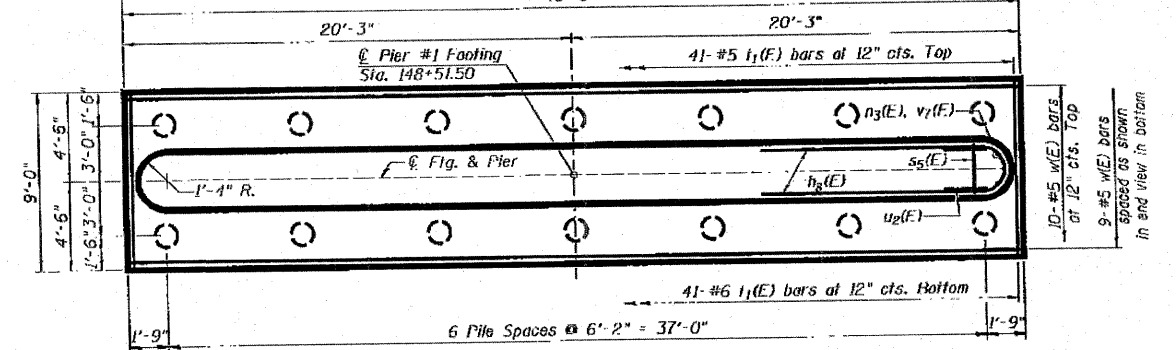
TOP PLAN



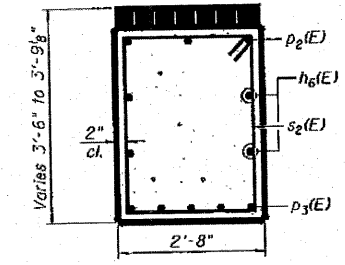
END VIEW



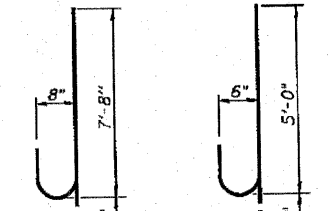
ELEVATION (Looking East)



FOOTING PLAN

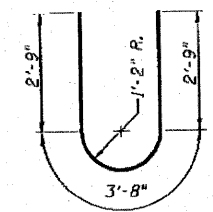


SEC. A-A

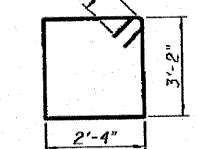


BAR u2(E)

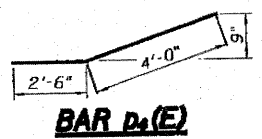
BAR h6(E)



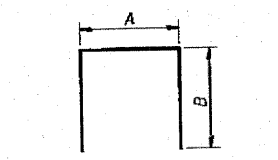
BAR u6(E)



BAR s6(E)



BAR p2(E)



BARS s3(E)-s4(E)

A & B DIMENSIONS

Bar	A	B
s3(E)	2'-4"	2'-5"
s4(E)	2'-4"	5'-0"
s6(E)	2'-4"	7'-7"

BILL OF MATERIAL-PIER #2

Bar	No.	Size	Length	Shape
h6(E)	4	#5	45'-4"	U
h7(E)	6	#8	36'-10"	U
h8(E)	18	#5	36'-10"	U
n2(E)	48	#8	8'-7"	U
n3(E)	6	#6	5'-9"	U
p2(E)	3	#9	45'-4"	L
p3(E)	5	#9	39'-0"	L
p4(E)	10	#7	6'-10"	L
s2(E)	94	#4	11'-9"	□
s3(E)	32	#5	7'-2"	□
s4(E)	5	#9	39'-0"	□
s6(E)	37	#5	17'-6"	□
sp1(E)	4	#4	13'-11"	MM
u2(E)	28	#6	9'-2"	U
v6(E)	48	#8	15'-0"	U
v7(E)	6	#6	7'-7"	U
w(E)	19	#5	40'-2"	U

Structure Excavation	Cu. Yd.	102
Concrete Structures	Cu. Yd.	88.2
Reinforcement Bars, Epoxy Coated	Lbs.	10,860
Furnishing Metal Shell Piles, 12"	Foot	195
Driving Piles	Foot	195
Test Pile, Metal Shell	Each	1

NOTES:

Reinforcement Bars designated (E) shall be epoxy coated.
 * Length of spiral = 285'. No allowance for lap min. Spiral lap 1/2 turns.
 Space Reinforcement in cap to miss anchor bolts.
 All edges shall have standard 3/4" chamfer except as noted.
 Pour steps monolithically with cap.

PILE DATA:

Type: 12 in. Dia. x 0.25" Walls
 Nominal Required Bearing: 270 kips
 Allowable Resistance Available: 90 kips
 Est. Length: 15'
 No. Production Piles: 13
 No. Test Piles: 1

BAR SIZE	LAP
#5	2'-2"
#6	2'-7"
#7	3'-5"
#8	4'-6"
#9	5'-9"

PIER #2
BELTLINE ROAD OVER ILLINOIS RAILNET
F.A.U. ROUTE 5154 SECTION 04-00343-00-BR
WINNEBAGO COUNTY
STA. 148+13.00 (S.N. 101-0172)