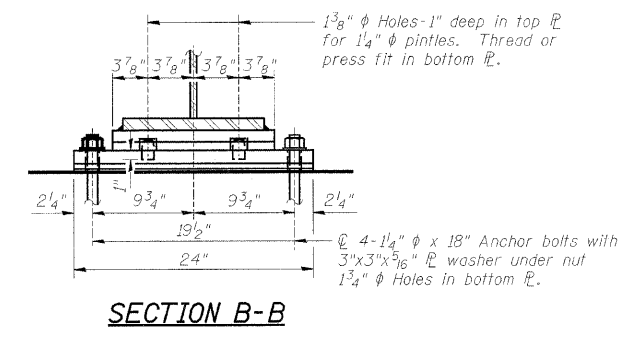
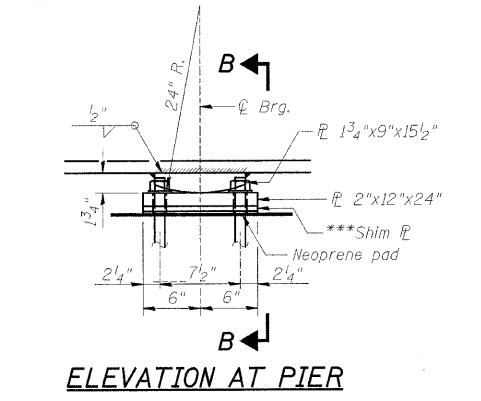
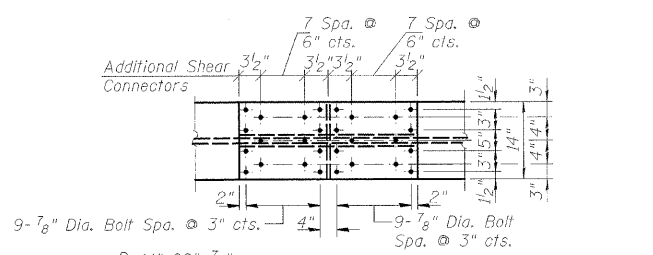
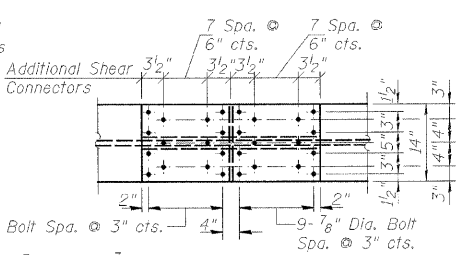
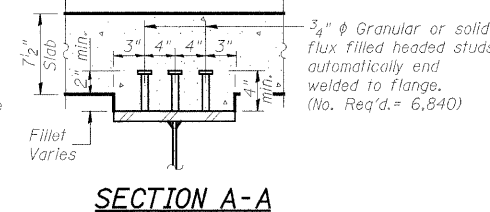
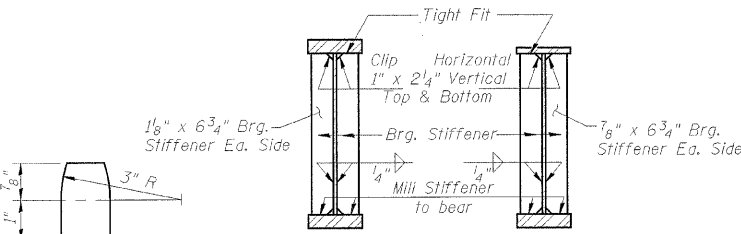
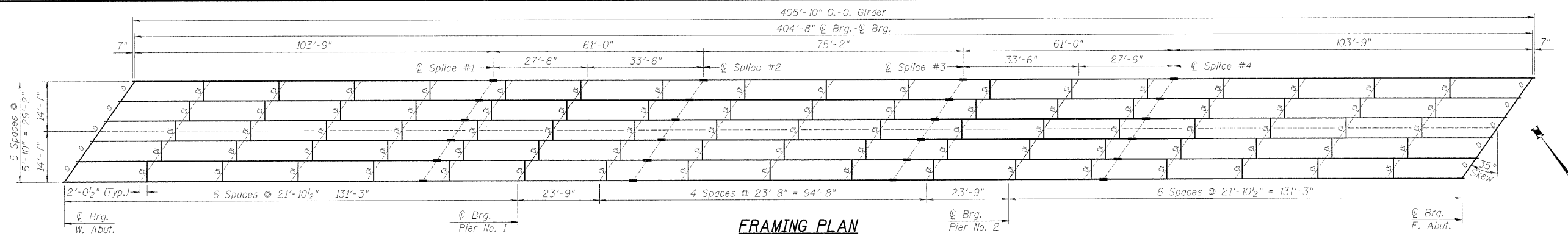
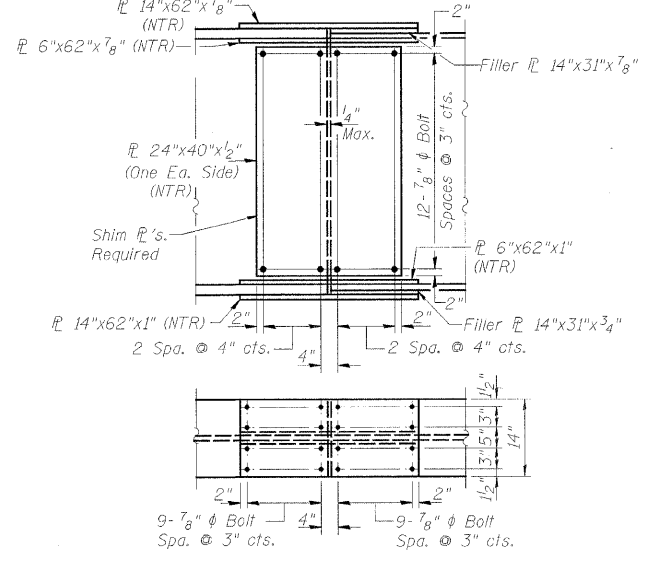
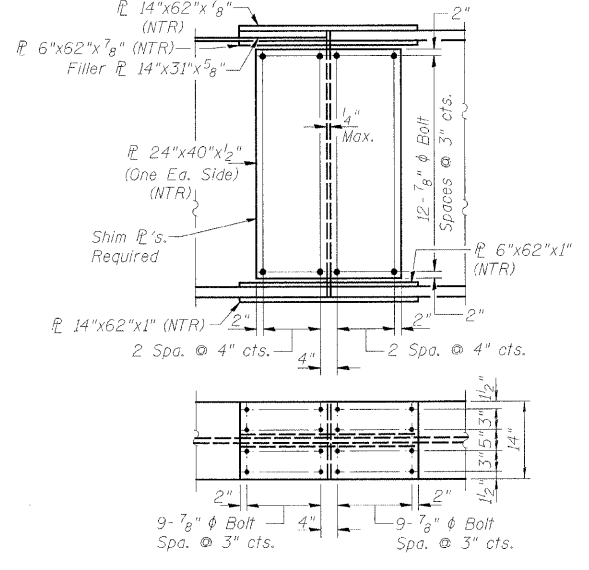


PROJECT	SECTION	COUNTY	SHEETS	SHEET
FAU 5154	04-00343-00-BR	WINNEBAGO	92	55
FED. ROAD DIST. NO. 7		ILLINOIS	FED. AID PROJECT-BRM-5099(175)	
Structural Sheet 9B of 21B				



FIXED BEARING - PIER #1
*** Additional 1/8" Shim @ required for Beam 3



INTERIOR GIRDER MOMENT TABLE

	0.4 Sp. 1	Pier	0.5 Sp. 2
Is (in ⁴)	124452	29758	17728
Ic (n) (in ⁴)	53093		39959
Ic (3n) (in ⁴)	38554		28819
Ss (in ³)	1205	1273	811
Sc (n) (in ³)	1523		1058
Sc (3n) (in ³)	1402		970
Z (in ³)			
W (K/ft.)	0.856	1.297	0.856
M@ (K)	1099	2399	483
s@ (K/ft.)	0.441		0.441
M@ (K)	624		395
M@ (K)	1378	823	1157
M (Imp) (K)	276	165	231
M@ (M+M Imp) (K)	2757	1647	2313
Ma (K)	5824	5260	4148
Mu (K)			
Ts@ non-comp (k.s.i.)	10.94	22.61	7.15
Ts@ (comp) (k.s.i.)	5.34		4.89
Ts@ 3/4 Imp (k.s.i.)	21.72	15.53	26.23
Ts (Overload) (k.s.i.)	38.0	38.14	38.27
Ts (Total) (k.s.i.)	49.4	49.58	49.75
VR (K)	68.9		55.4

INTERIOR GIRDER REACTION TABLE

	Abut.	Pier
R@ (K)	66.8	195.6
R@ (K)	50.8	59.5
Imp. (K)	10.2	11.9
R (Total) (K)	127.8	267.0

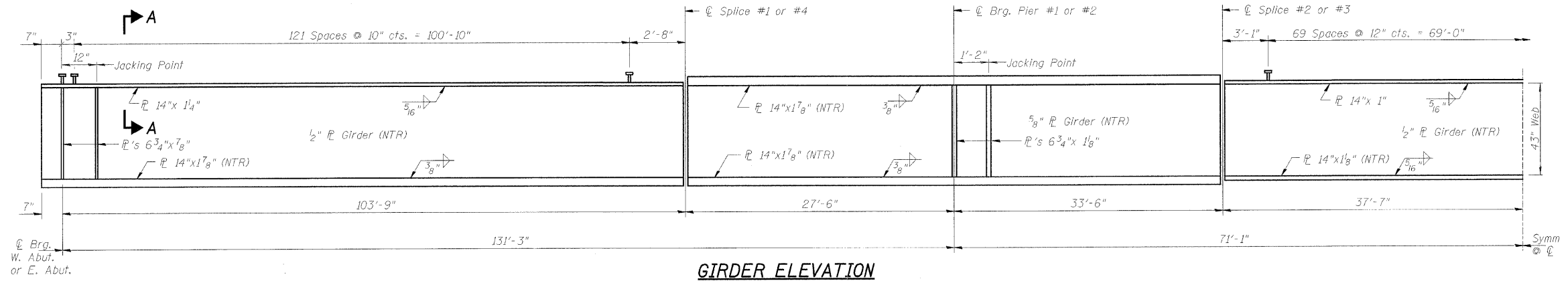
BILL OF MATERIAL

Item	Unit	Total
Stud Shear Connectors	Each	6,840
* Furnishing & Erecting Structural Steel	L. Sum	1
Anchor Bolts, 1 1/4"	Each	24

*Includes Side Retainers for Elastomeric Bearing Assemblies

NOTE:
All Structural Steel shall conform to AASHTO M270 Gr. 50

FRAMING PLAN
BELTLINE ROAD OVER KISHWAUKEE RIVER
FAU ROUTE 5154 SECTION 04-00343-00-BR
WINNEBAGO COUNTY
STA. 129+89 (S.N. 101-017)



"NTR" denotes plates to which notch toughness requirements are applicable.
** See Additional Connectors Over Splice