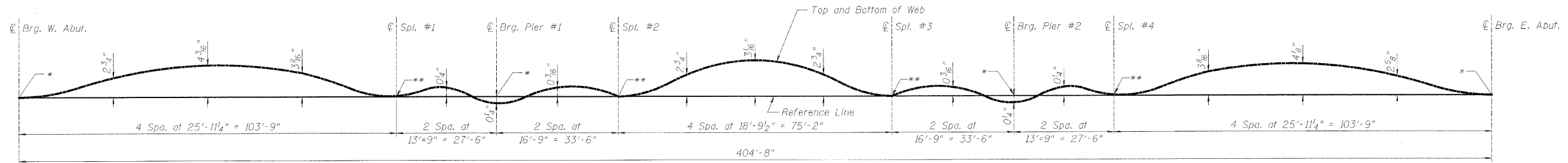


ROUTE NO.	SECTION	COUNTY	SHEETS	SHEET NO.
5154	04-00343-00-BR	WINNEBAGO	92	56
FED. ROAD DIST. NO. 7	ILLINOIS	FED. AID PROJECT-BRM-5099(75)		

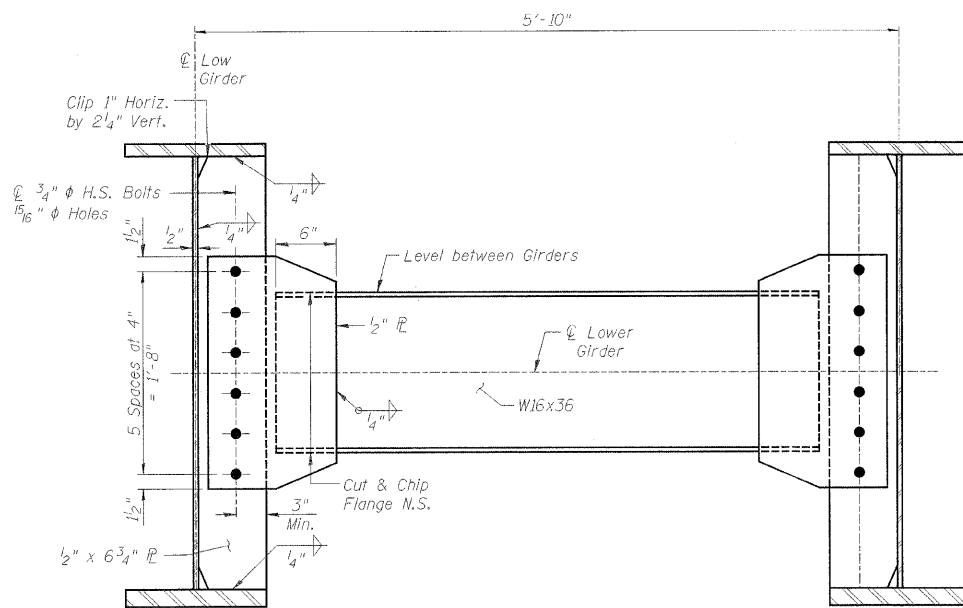
Structural Sheet 10B of 21B



CAMBER DIAGRAM

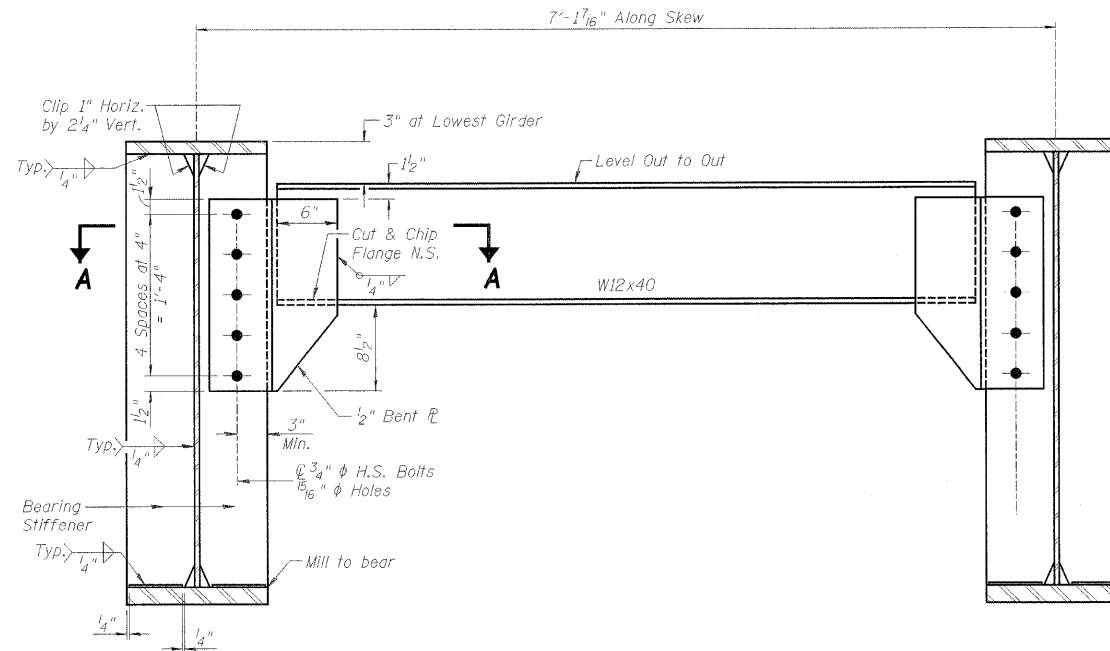
TOP OF WEB ELEVATIONS (FOR FABRICATION ONLY)								
Girders	W. Abut.	Splice #1	Pier #1	Splice #2	Splice #3	Pier #2	Splice #4	E. Abut.
1	706.437	706.694	706.700	706.748	706.929	707.041	707.167	707.420
2	706.532	706.789	706.795	706.843	707.023	707.136	707.262	707.503
3	706.613	706.870	706.876	706.924	707.105	707.217	707.343	707.584
4	706.604	706.861	706.866	706.915	707.095	707.207	707.333	707.574
5	706.503	706.760	706.765	706.814	706.994	707.106	707.233	707.473
6	706.377	706.645	706.651	706.699	706.880	706.992	707.118	707.359

*Final Top of Web elevations to be used in computing the bearing's seat elevation.
 **Theoretical elevations before Dead Load Deflection



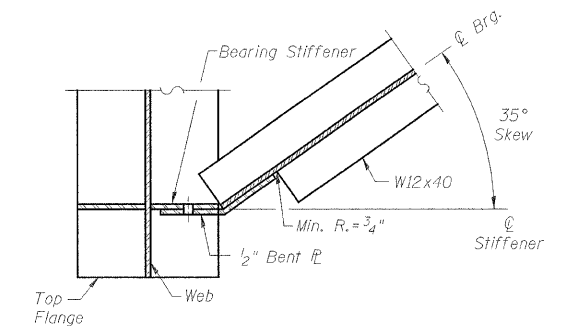
TYPICAL INTERIOR DIAPHRAGM - D1

Note: Two hardened washers shall be required over all oversized holes.



TYPICAL END DIAPHRAGM - D

Note: Two hardened washers shall be required over all oversized holes.



SECTION A-A

**CROSS FRAME & CAMBER DIAGRAM
 BELTLINE ROAD OVER KISHWAUKEE RIVER
 FAU ROUTE 5154 SECTION 04-00343-00-BR
 WINNEBAGO COUNTY
 STA. 129+89 (S.N. 101-017)**