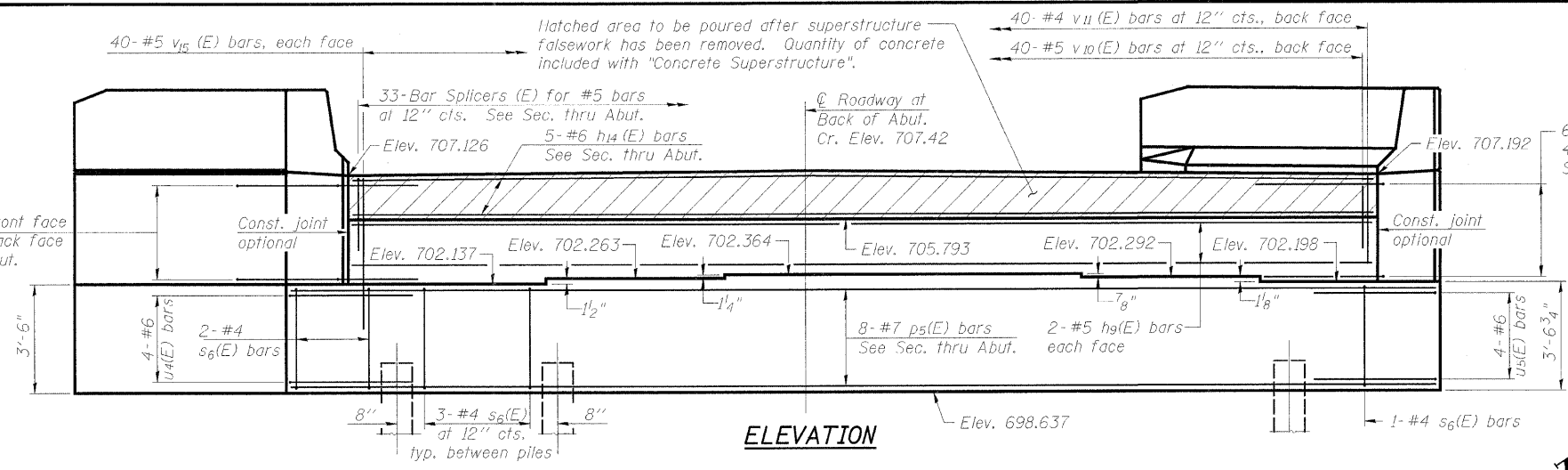
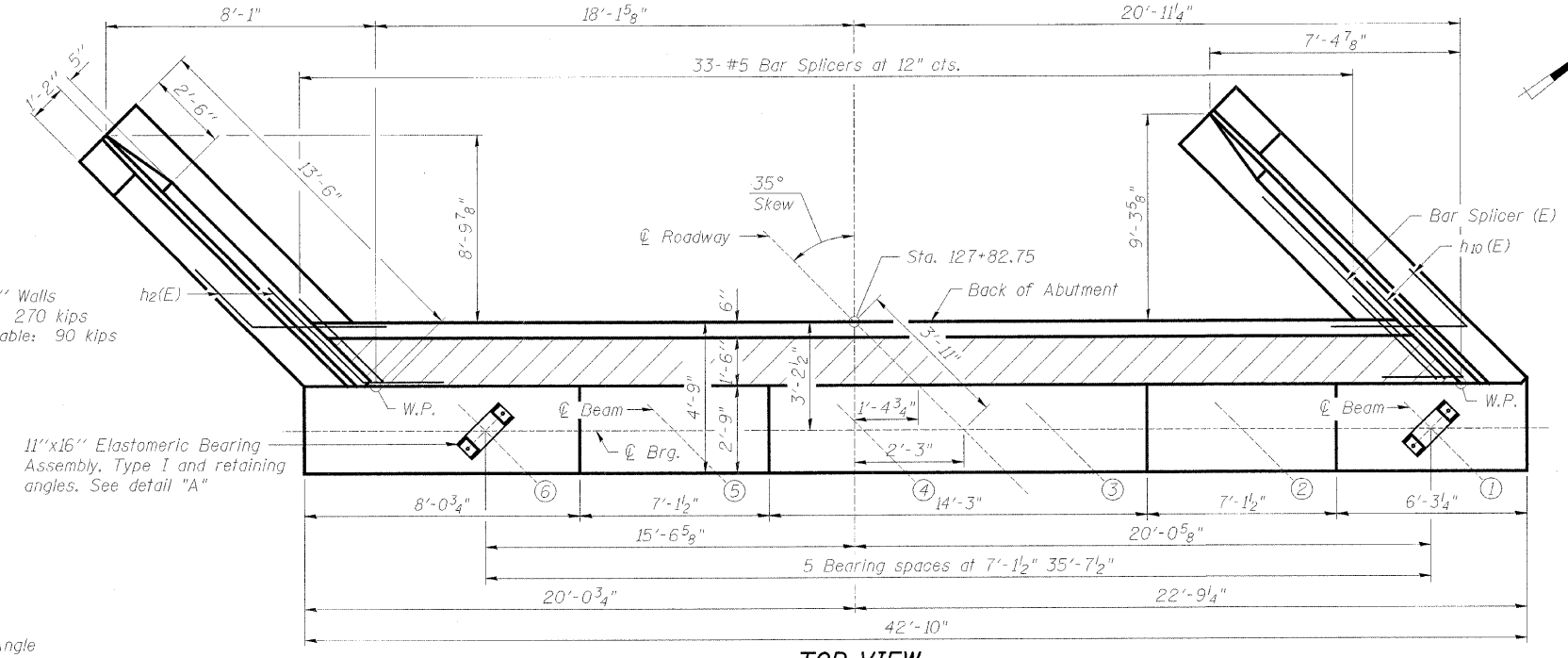


PROJECT	SECTION	COUNTY	SHEETS	SHEET
5154	04-00343-00-BR	WINNEBAGO	92	59
FED. ROAD DIST. NO. 7	ILLINOIS	FED. AID PROJECT-BRM-5098(75)		

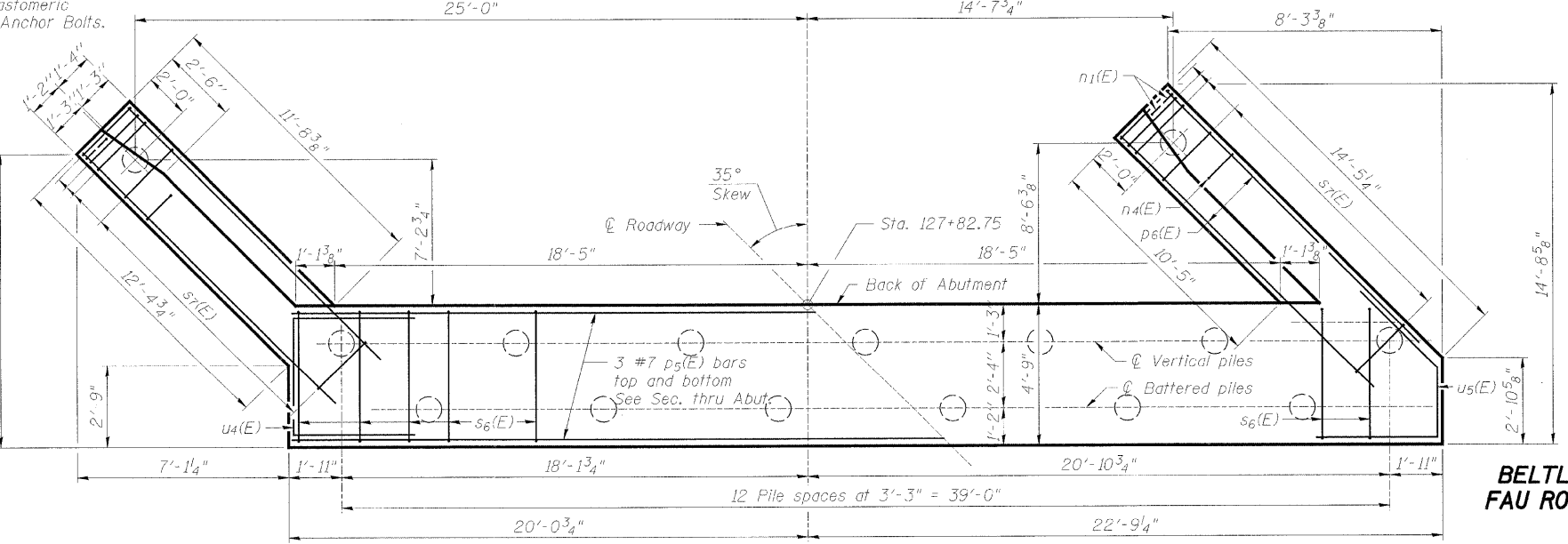
Structural Sheet 13B of 21B



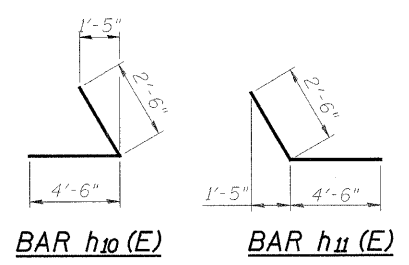
ELEVATION



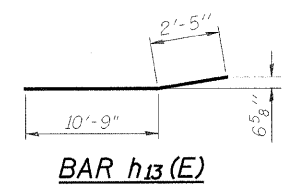
TOP VIEW



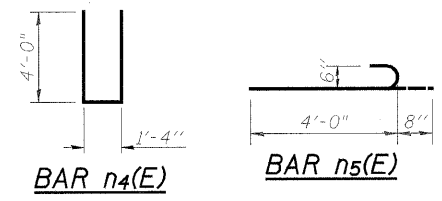
PLAN-PILE CAP



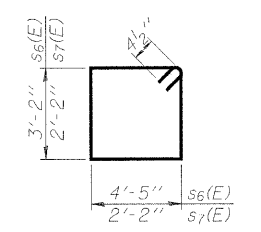
BAR h10(E) BAR h11(E)



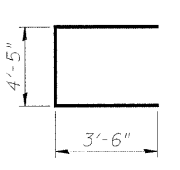
BAR h13(E)



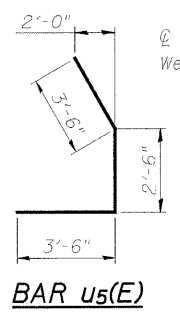
BAR n4(E) BAR n5(E)



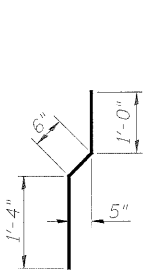
BARS s6(E) & s7(E)



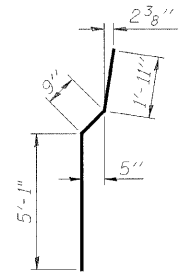
BAR u4(E)



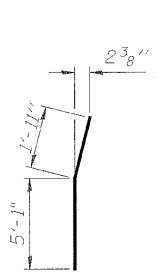
BAR u5(E)



BAR v11(E)



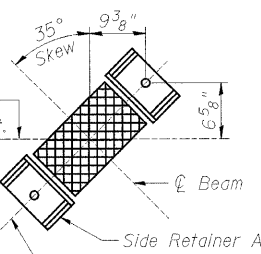
BAR v13(E)



BAR v14(E)

PILE DATA

Type: 12 in. Dia. x 0.25" Walls  
 Nominal Required Bearing: 270 kips  
 Allowable Resistance Available: 90 kips  
 Est. Length: 49'  
 No. Production Piles: 14  
 No. Test Piles: 1



DETAIL "A"

ABUTMENT BILL OF MATERIAL

Bar No.	Size	Length	Shape
h9(E)	4 #5	38'-9"	
h10(E)	10 #5	7'-0"	
h11(E)	10 #5	7'-0"	
h12(E)	18 #4	13'-2"	
h13(E)	18 #4	13'-2"	
h14(E)	5 #6	38'-9"	
n4(E)	22 #6	9'-4"	
n5(E)	12 #6	4'-8"	
p5(E)	8 #7	42'-6"	
p6(E)	12 #7	13'-6"	
s6(E)	39 #4	15'-11"	
s7(E)	38 #4	9'-5"	
u4(E)	4 #6	11'-5"	
u5(E)	4 #6	9'-6"	
v10(E)	40 #5	2'-6"	
v11(E)	40 #4	2'-10"	
v12(E)	28 #6	7'-6"	
v13(E)	22 #6	7'-9"	
v14(E)	6 #6	7'-0"	
v15(C)	80 #5	6'-4"	
Porous Granular Embankment			Cu. Yd. 57
Structure Excavation			Cu. Yd. 184
Concrete Structures			Cu. Yd. 51.3
Reinforcement Bars, Epoxy Coated			Pound 4,460
Bar Splicers			Each 33
Furnishing Metal Shell Piles, 12"			Foot 686
Driving Piles			Foot 686
Test Pile, Metal Shell			Each 1
Concrete Sealer			Sq. Ft. 119
Geocomposite Wall Drain			Sq. Yd. 32
Pipe Underdrains for Structures 4"			Foot 80

NOTES:

For Bar Splicer Assembly Detail, see Structural Sheet 20B of 21B.  
 For pile detail see Structural Sheet 19B of 21B.  
 Reinforcement Bars Designated (E) shall be epoxy coated.

**WEST ABUTMENT**  
**BELTLINE ROAD OVER KISHWAUKEE RIVER**  
**FAU ROUTE 5154 SECTION 04-00343-00-BR**  
**WINNEBAGO COUNTY**  
**STA. 129+89.00 (S.N. 101-0171)**