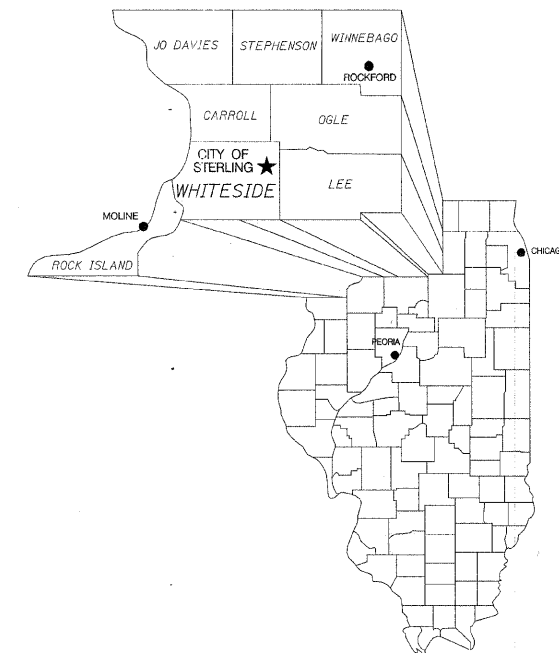


STATE OF ILLINOIS  
DEPARTMENT OF TRANSPORTATION

PLANS FOR  
PROPOSED LOCAL AGENCY IMPROVEMENT  
FEDERAL AID URBAN PROJECT

F.A.U. ROUTE 5548 (LYNN BLVD.)  
CITY OF STERLING  
SECTION 06-00141-00-RS  
PROJECT NO. M-5062(26)  
JOB NO. C-92-055-08  
CONTRACT NO. 85445  
2009

STATE LOCATION MAP



INDEX OF SHEETS

1	COVER SHEET, INDEX OF SHEETS, AND PAVEMENT MIXTURE
2	SUMMARY OF QUANTITIES
2-4	SCHEDULE OF QUANTITIES
5	TYPICAL SECTIONS, TIE BAR DETAILS, AND PIPE UNDERDRAIN DETAILS
6-10	PLAN AND PROFILE - LYNN BLVD.
11-15	PAVEMENT MARKINGS - LYNN BLVD.
16	STANDARD 55-3B - MANHOLE, SPECIAL

\*STANDAARDS

420001-07	PAVEMENT JOINTS
420701-02	PAVEMENT FABRIC
442101-07	CLASS B PATCHES
601001-03	SUB-SURFACE DRAINS
606001-04	CONCRETE CURB TYPE B AND COMBINATION CONCRETE CURB AND GUTTER
606301-04	PC CONCRETE ISLANDS & MEDIANS
606306-03	CORRUGATED PC CONCRETE MEDIANS
701601-06	URBAN LANE CLOSURE, MULTILANE, 1W OR 2W WITH NONTRAVERSABLE MEDIAN
701606-06	URBAN LANE CLOSURE, MULTILANE, 2W WITH MOUNTABLE MEDIAN
701701-06	URBAN LANE CLOSURE, MULTILANE INTERSECTION
701801-04	LANE CLOSURE, MULTILANE 1W OR 2W CROSSWALK OR SIDEWALK CLOSURE
701901-01	TRAFFIC CONTROL DEVICES
720011-01	METAL POSTS FOR SIGNS, MARKERS AND DELINEATORS
728001-01	TELESCOPING STEEL SIGN SUPPORT
729001-01	APPLICATIONS OF TYPES A AND B METAL POSTS (FOR SIGNS & MARKERS)
780001-02	TYPICAL PAVEMENT MARKINGS
B.L.R. 17-4	TRAFFIC CONTROL DEVICES - DAY LABOR CONSTRUCTION

\*IN PROPOSAL

SCALES:

PLAN AND PROFILE



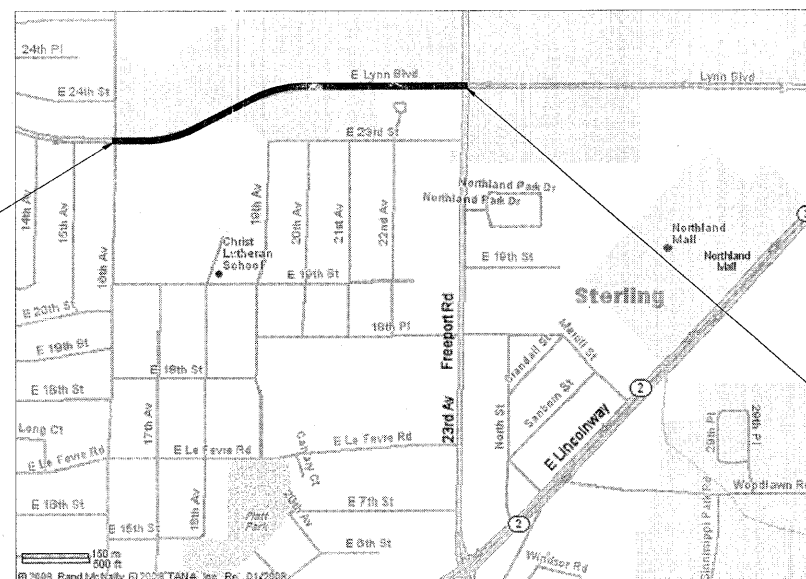
NET LENGTH = 2,672.6 FEET = 0.51 MILES

UTILITIES

NAME AND ADDRESS OF UTILITIES	TYPE
AMERITECH 1908 PROPHET ROAD ROCK FALLS, IL. 61071 (815) 625-9958	TELEPHONE
NICOR GAS COMPANY 4651 LINDEN ROAD ROCKFORD, IL. 61109 (815) 965-5416	GAS
COMED 919 WEST FIRST STREET DIXON, IL. 61021 (815) 284-5857	ELECTRIC
COMCAST COMMUNICATIONS P.O. BOX 580 1304 WEST ROUTE 30 ROCK FALLS, IL. 61071 (888) 736-6608	CABLE TV
ILLINOIS-AMERICAN WATER CO. 304 SECOND AVENUE STERLING, IL. 61081 (815) 625-3196	WATER
CITY OF STERLING 212 THIRD AVENUE STERLING, IL. 61081 (815) 626-8378	SANITARY & STORM SEWER



SECTION 06-00141-00-RS  
LYNN BLVD.  
BEGINS AT STA. 53+48.4



SECTION 06-00141-00-RS  
LYNN BLVD.  
ENDS AT STA. 80+21



LOCATION MAP

ADT = 10,900  
2.5% TRUCKS

CITY OF STERLING	
APPROVED	<u>January 9, 2009</u> DATE <i>[Signature]</i> DIRECTOR OF COMMUNITY SERVICES CITY OF STERLING, IL. LOCAL AGENCY, POSITION
PASSED	<u>January 9, 2009</u> DATE <i>[Signature]</i> DISTRICT ENGINEER OF LOCAL ROADS & STREETS
RELEASING FOR BID BASED ON LIMITED REVIEW	<u>January 9, 2009</u> DATE <i>[Signature]</i> DEPUTY DIRECTOR OF HIGHWAYS, REGION 2 ENGINEER



WHA #1025D08

PLANS PREPARED BY  
**WILLET, HOFMANN & ASSOCIATES, INC.**  
CONSULTING ENGINEERS

Land Surveying - Transportation - Structural  
Environmental - Architecture

809 East Second Street Dixon, Illinois 61021  
Phone 815.284.3381 Fax 815.284.3385  
Design Firm #104-000918  
www.willett-hofmann.com



# ROADWAY SCHEDULES

CONCRETE MEDIAN REMOVAL		
STATION	FOOT	REMARKS
LYNN BLVD		
54+04 TO 54+17	13	6' WIDE
55+40 TO 60+50	510	6' WIDE
62+85 TO 69+25	640	6' WIDE
77+25 TO 78+35	110	6' WIDE
PROJECT TOTAL	1,273	

MEDIAN REMOVAL PARTIAL DEPTH		
STATION	SO FT	REMARKS
LYNN BLVD		
STA. 60+50 TO 62+85	940	4" X 6" THICKNESS
STA. 69+25 TO 73+30	1,620	4" X 6" THICKNESS
STA. 73+98 TO 77+25	1,308	4" X 6" THICKNESS
PROJECT TOTAL	3,868	

CLASS B PATCHES, TYPE III, 10 INCH		
STATION	SQ YD	REMARKS
LYNN BLVD		
L 61+05	32.0	FULL WIDTH WESTBOUND LANES
L 68+53	40.0	FULL WIDTH WESTBOUND LANES
R 63+99	17.3	NORTH HALF OF EASTBOUND LANES
PROJECT TOTAL	89.3	

CLASS B PATCHES, TYPE IV, 10 INCH		
STATION	SQ YD	REMARKS
LYNN BLVD		
L 62+62.5	25.4	SOUTH HALF OF WESTBOUND LANES
L 76+59	96.0	FULL WIDTH WESTBOUND LANES
R 76+59	96.0	FULL WIDTH EASTBOUND LANES
PROJECT TOTAL	217.4	

AREA REFLECTIVE CRACK CONTROL TREATMENT		
STATION	SQ YD	REMARKS
LYNN BLVD		
STA. 55+40 TO 56+50	586.7	24" LT. & 24" RT.
STA. 56+50 TO 77+25	12,450	54" W
STA. 77+25 TO 78+35	586.7	24" LT. & 24" RT.
PROJECT TOTAL	13,623.4	

MANHOLES, SPECIAL		
STATION	EACH	REMARKS
LYNN BLVD		
56+99	1	
62+89	1	
69+22	1	
PROJECT TOTAL	3	

PIPE UNDERDRAIN 4" (SPECIAL)		
STATION	FOOT	REMARKS
LYNN BLVD		
36' L 54+60 TO 59+70	495	BEHIND B.O.C.
34' L 59+78 TO 62+50	269	BEHIND B.O.C.
L 69+50 TO 71+97	246	BEHIND B.O.C.
L 72+25 TO 74+96	270	BEHIND B.O.C.
55+50 TO 56+99	150	AT ROAD C.L.
56+99 TO 59+79	280	AT ROAD C.L.
59+79 TO 60+50	71	AT ROAD C.L.
62+89 TO 69+22	633	AT ROAD C.L.
R 63+48 TO 68+50	486	BEHIND B.O.C.
R 69+50 TO 74+97	545	BEHIND B.O.C.
R 75+25 TO 79+27	401	BEHIND B.O.C.
PROJECT TOTAL	3,846	

INLETS TO BE ADJUSTED		
STATION	EACH	REMARKS
LYNN BLVD		
54+11	1	
L 54+58	1	
L 56+99	1	
PROJECT TOTAL	3	

COMBINATION CONCRETE CURB AND GUTTER, TYPE M-6.24		
STATION	FOOT	REMARKS
LYNN BLVD		
L 54+52 TO 54+65	13	
L 54+82 TO 55+10	28	
L 55+20 TO 55+26	6	
L 55+63 TO 55+69	6	
L 55+97 TO 56+03	6	
L 56+93 TO 57+06	13	
L 57+85 TO 58+14	29	
L 58+95 TO 59+01	6	
L 63+92 TO 64+03	11	
L 70+94 TO 71+04	10	
L 76+41 TO 76+77	36	
R 57+97 TO 58+03	6	
R 64+94 TO 65+00	6	
R 65+94 TO 66+00	6	
R 67+22 TO 67+28	6	
R 67+95 TO 68+06	11	
R 68+94 TO 69+00	6	
R 73+23 TO 74+07	84	
R 76+41 TO 76+77	36	
R 78+97 TO 79+03	6	
PROJECT TOTAL	331	

CONCRETE MEDIAN, TYPE SM-6.12		
STATION	SQ FT	REMARKS
LYNN BLVD		
54+04 TO 54+17	78	6' WIDE
55+40 TO 55+44	24	6' WIDE
78+31 TO 78+35	24	6' WIDE
PROJECT TOTAL	126	

CORRUGATED MEDIAN		
STATION	SQ FT	REMARKS
LYNN BLVD		
55+50 TO 56+50	600	6' WIDE
77+25 TO 78+25	600	6' WIDE
PROJECT TOTAL	1,200	

P.C.C. RAMPED MEDIAN TERMINAL		
STATION	EACH	REMARKS
LYNN BLVD		
55+44 TO 55+50	1	6' WIDE
78+25 TO 78+31	1	6' WIDE
PROJECT TOTAL	2	

TRAFFIC CONTROL AND PROTECTION		
STATION	L SUM	REMARKS
LYNN BLVD		
ENTIRE PROJECT	1	
PROJECT TOTAL	1	

THERMOPLASTIC PAVMENT MARKING - LINE 4"		
STATION	FOOT	REMARKS
LYNN BLVD		
L 55+37 TO 78+27	580	CENTER OF LANES - 10'-30' SP (WHT)
56+50 TO 77+25	8,300	DBL (YEL) L & R AT CENTER MEDIAN
R 55+37 TO 78+27	580	CENTER OF LANES - 10'-30' SP (WHT)
PROJECT TOTAL	9,460	

THERMOPLASTIC PAVMENT MARKING - LINE 12"		
STATION	FOOT	REMARKS
LYNN BLVD		
56+75 TO 77+00	151	DIAGONALS @ 75' CTRS (YEL)
PROJECT TOTAL	151	

PAINT PAVEMENT MARKING - LINE 4"		
STATION	FOOT	REMARKS
LYNN BLVD		
L 53+77 TO 55+07	40	CENTER OF LANES - 10'-30' SP (WHT)
R 53+77 TO 55+07	40	CENTER OF LANES - 10'-30' SP (WHT)
L 78+57 TO 79+87	40	CENTER OF LANES - 10'-30' SP (WHT)
R 78+57 TO 79+87	40	CENTER OF LANES - 10'-30' SP (WHT)
PROJECT TOTAL	160	

PAINT PAVMENT MARKING - LINE 24"		
STATION	FOOT	REMARKS
LYNN BLVD		
L 53+61	24	STOP BAR (WHT)
L 53+74	21	STOP BAR (WHT)
R 79+88	21	STOP BAR (WHT)
R 80+01	24	STOP BAR (WHT)
PROJECT TOTAL	90	

P. C. C. SURFACE REMOVAL (VARIABLE DEPTH)		
STATION	SQ YD	REMARKS
LYNN BLVD		
STA. L 55+40 TO 78+35	1,275	2,295' X 5' W (ALONG CURB)
STA. R 55+40 TO 78+35	1,275	2,295' X 5' W (ALONG CURB)
PROJECT TOTAL	2,550	

RESTORATION WORK		
STATION	L SUM	REMARKS
LYNN BLVD		
ENTIRE PROJECT	1	INCL SEEDING BEHIND CURB & GUTTER, ETC.
PROJECT TOTAL	1	

BREAKER-RUN CRUSHED STONE		
STATION	TON	REMARKS
LYNN BLVD		
CONTINGENCY ITEM	200	AS DIRECTED BY THE ENGINEER
PROJECT TOTAL	200	

TIE BARS 3/4"		
STATION	EACH	REMARKS
LYNN BLVD		
55+40 TO 60+50	510	L & R AT MEDIAN (24" CTRS)
62+85 TO 69+25	640	L & R AT MEDIAN (24" CTRS)
76+41 TO 76+77	72	L & R AT C.L. LANE & CURB
77+25 TO 78+35	110	L & R AT MEDIAN (24" CTRS)
PROJECT TOTAL	1,332	

FILE NAME: S:\Trans\1025008-Steer-Ling\lrm\BLVD2008\Design\1025008-Sched1.ras.dgn



DESIGNED -	REVISED -
DRAWN -	REVISED -
CHECKED -	REVISED -
DATE -	REVISED -

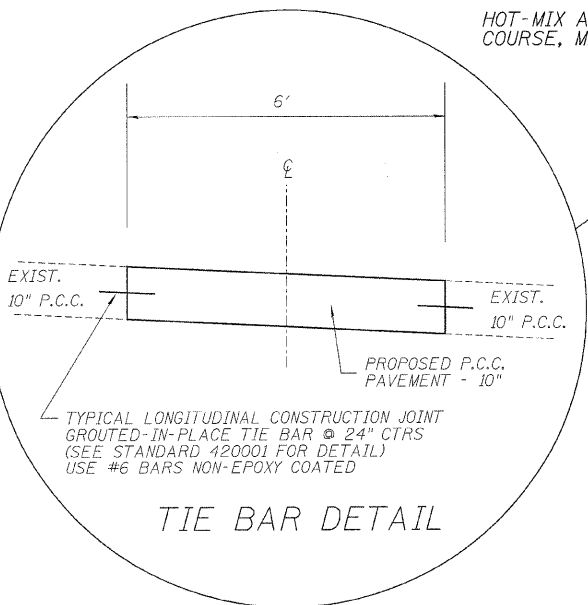
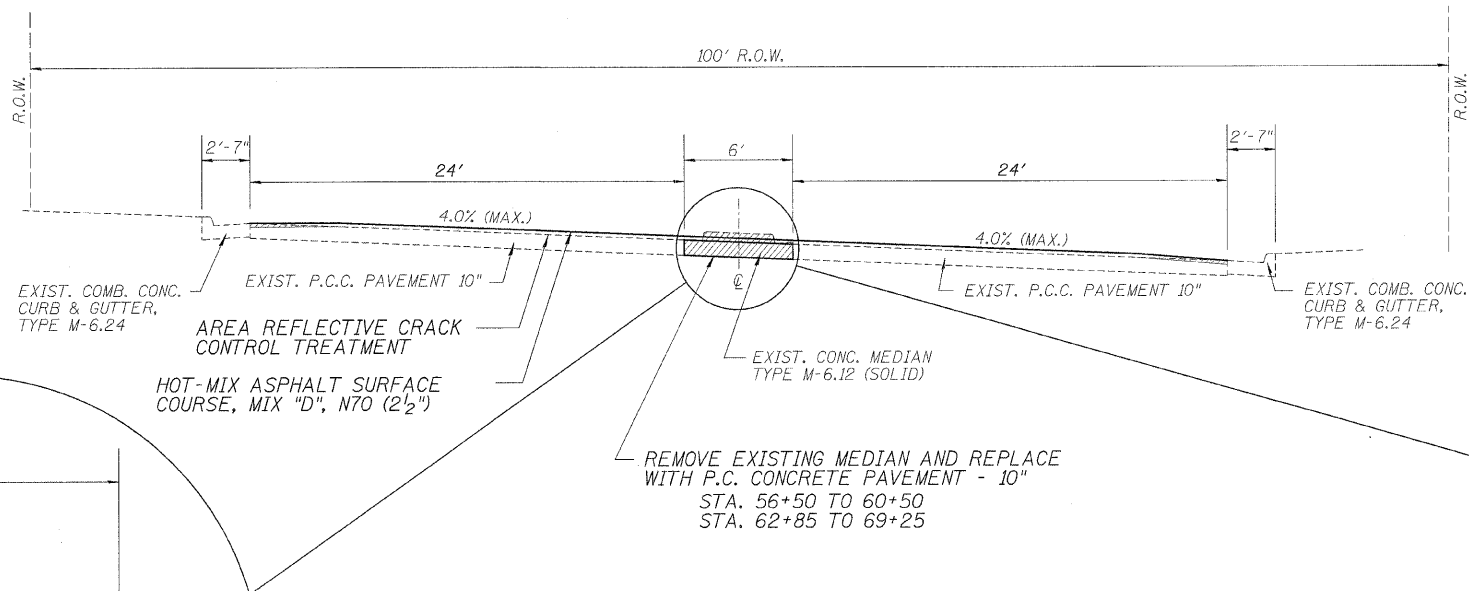
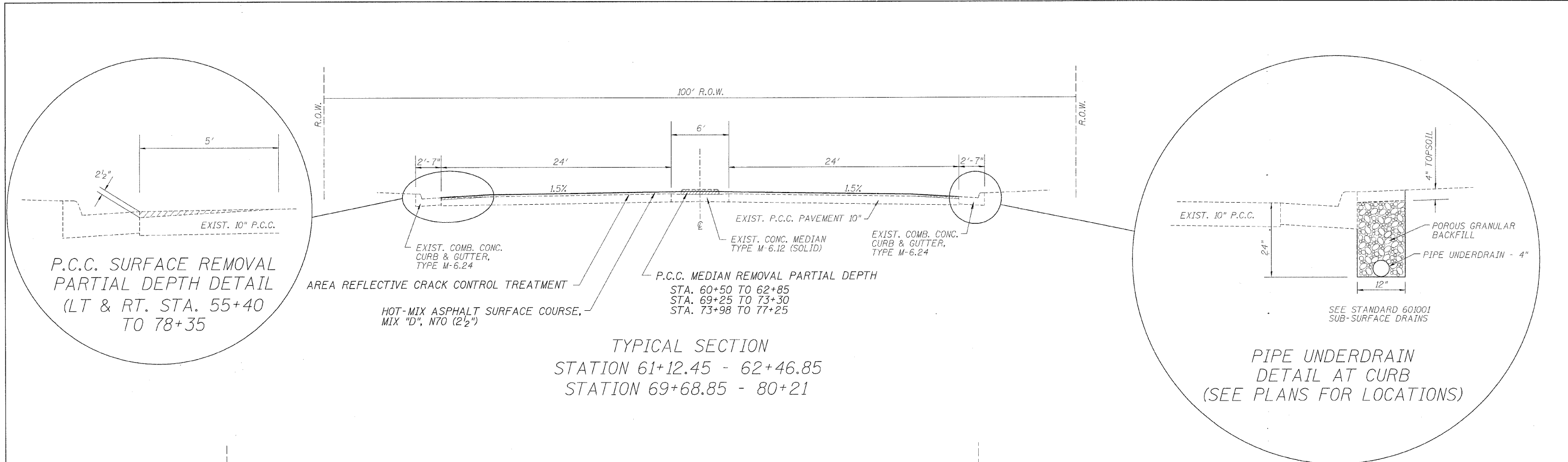
## CITY OF STERLING, ILLINOIS LYNN BLVD. - 16TH AVE. TO FREEPORT RD.

## SCHEDULE OF QUANTITIES

SCALE:	SHEET NO. OF SHEETS	STA. TO STA.	FED. ROAD DIST. NO.	ILLINOIS FED. AID PROJECT
--------	---------------------	--------------	---------------------	---------------------------

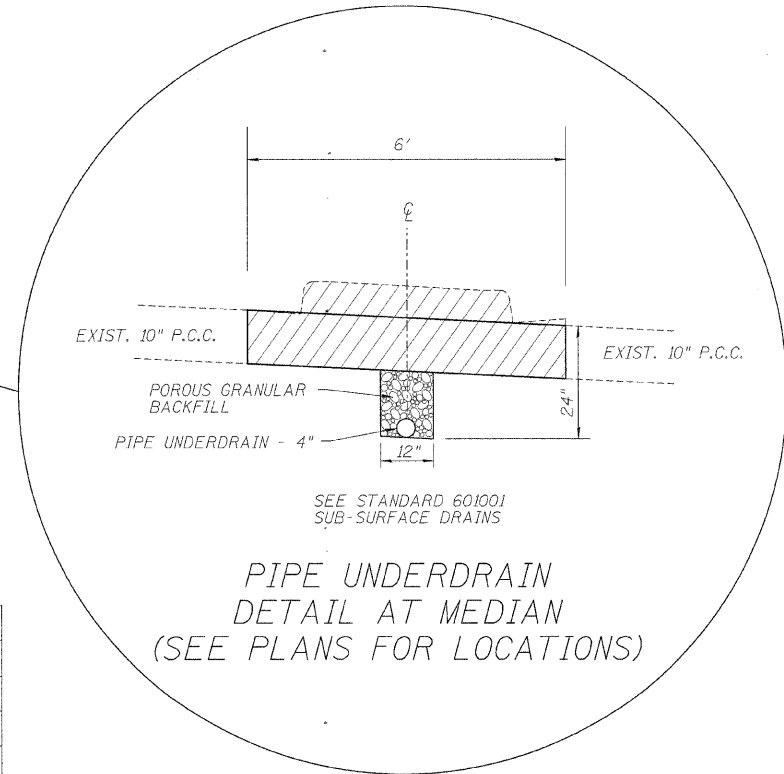
F.A. RTE.	SECTION	COUNTY	TOTAL SHEETS	SHEET NO.
	06-00141-00-RS	WHITESIDE	16	3
			CONTRACT NO.	





**PAVEMENT MIXTURE**

	CONSTRUCTION
MIXTURE USE:	SURFACE
PG:	PG 58-22
DESIGN AIR VOIDS	4.0 @ N70
MIXTURE GRADATION	IL 9.5 or 12.5
FRICTION AGGREGATE	D
MIXTURE WEIGHT:	112 LBS/ SY*IN



**WILLET, HOFMANN & ASSOCIATES, INC.**  
 CONSULTING ENGINEERS  
 809 East Second Street Dixon, IL 61021  
 Phone 815.284.3381 Fax 815.284.3386  
 Design Firm # 184-00918  
 www.willett-hofmann.com

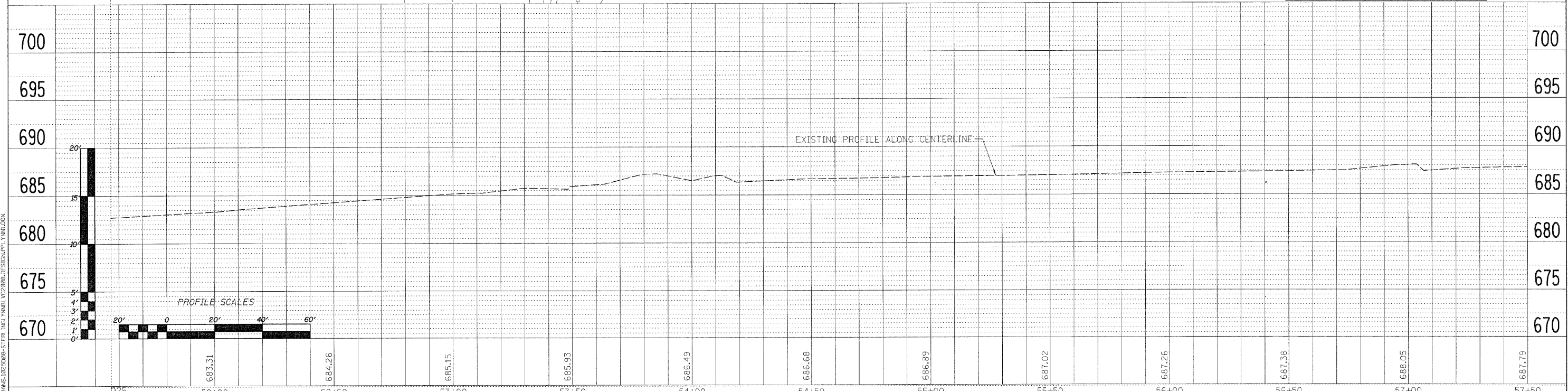
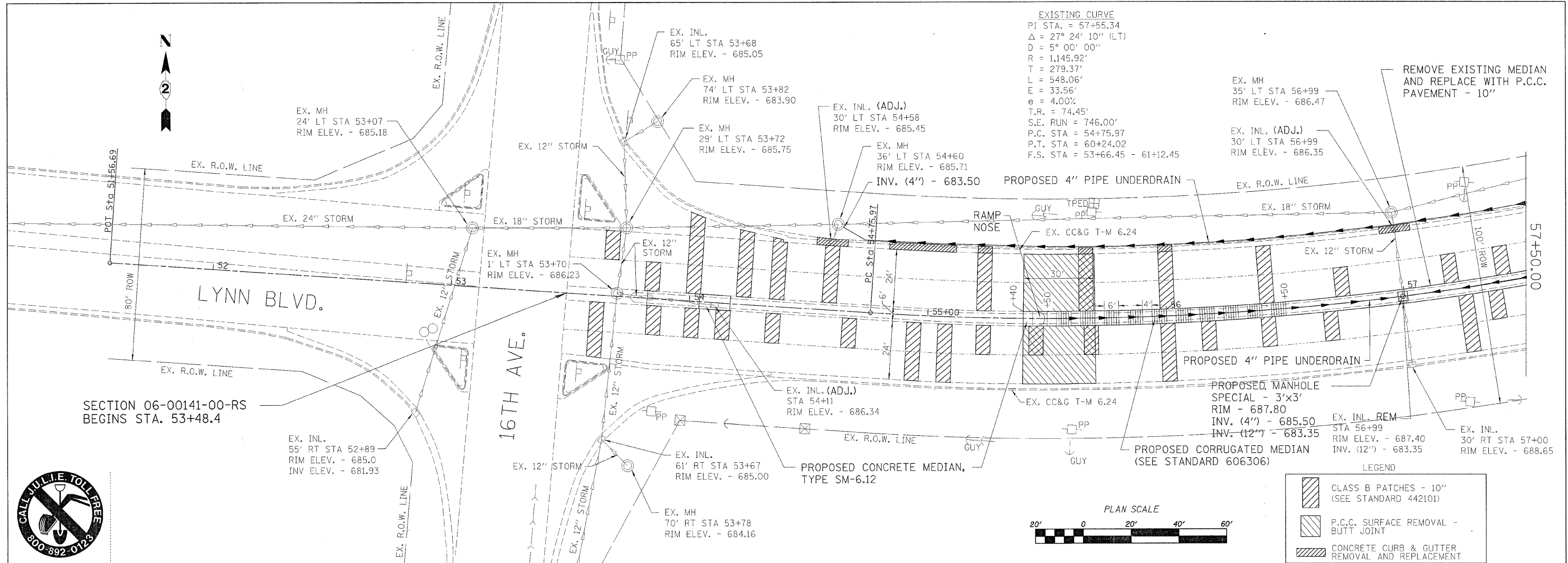
DESIGNED -	---	REVISED -	---
DRAWN -	---	REVISED -	---
CHECKED -	---	REVISED -	---
DATE -	---	REVISED -	---

**CITY OF STERLING, ILLINOIS**  
**LYNN BLVD. - 16TH AVE. TO FREEPORT RD.**

**PROPOSED TYPICAL SECTIONS, TIE BAR, AND PIPE UNDERDRAIN DETAILS**

SCALE: \_\_\_\_\_ SHEET NO. \_\_\_\_\_ OF \_\_\_\_\_ SHEETS STA. \_\_\_\_\_ TO STA. \_\_\_\_\_

F.A. RTE.	SECTION	COUNTY	TOTAL SHEETS	SHEET NO.
	06-00141-00-RS	WHITESIDE	16	5
FED. ROAD DIST. NO. _____ ILLINOIS FED. AID PROJECT			CONTRACT NO. _____	

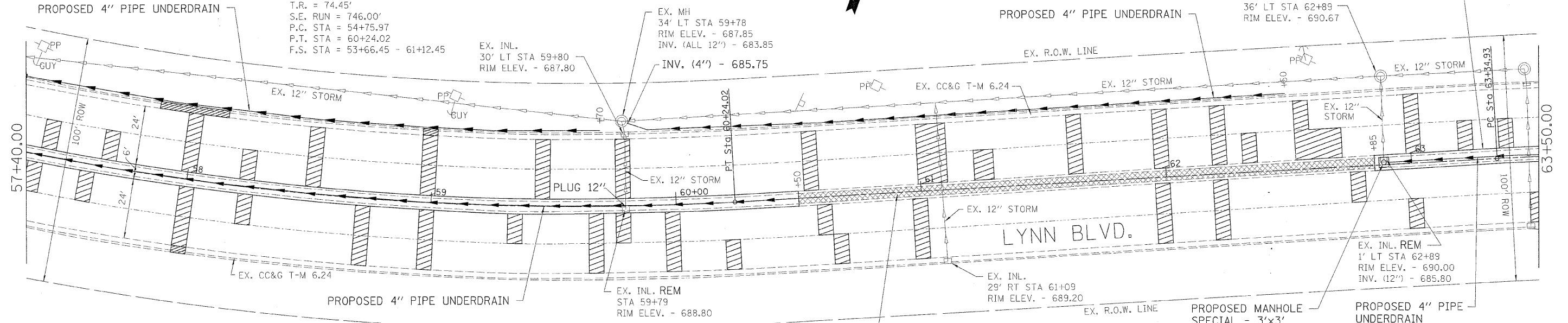


<p><b>WILLETT, HOFMANN &amp; ASSOCIATES, INC.</b>          CONSULTING ENGINEERS          809 East Sycamore Street, Dixon, IL 61021          Phone: 815.284.3381 Fax: 815.284.3385          Design Firm # 184-00918          www.willett-hofmann.com</p>	DESIGNED -	REVISED -	<b>CITY OF STERLING, ILLINOIS</b> <b>LYNN BLVD. - 16TH AVE. TO FREEPORT RD.</b>	<b>LYNN BLVD PLAN &amp; PROFILE</b>	F.A. RTE.	SECTION	COUNTY	TOTAL SHEETS	SHEET NO.
	DRAWN -	REVISED -			06-00141-00-RS	WHITESIDE	16	6	
	CHECKED -	REVISED -			CONTRACT NO. _____				
	DATE -	REVISED -			FED. ROAD DIST. NO. _____ ILLINOIS FED. AID PROJECT				

FILE NAME = S:\TRANS\DESIGN\STERLING\LYNNBLVD\02\288\DESIGN\PL\YANL02A

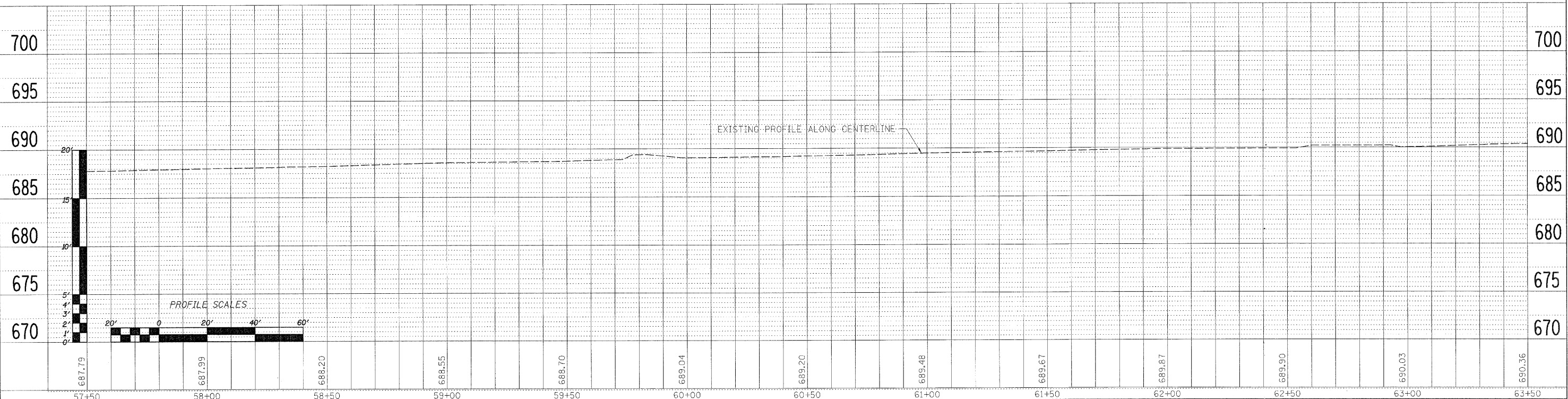
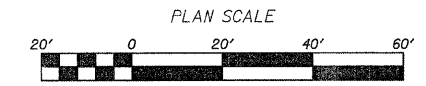


EXISTING CURVE  
 PI STA. = 57+55.34  
 $\Delta = 27^\circ 24' 10''$  (LT)  
 $D = 5^\circ 00' 00''$   
 $R = 1,145.92'$   
 $T = 279.37'$   
 $L = 548.06'$   
 $E = 33.56'$   
 $e = 4.00\%$   
 $T.R. = 74.45'$   
 $S.E. RUN = 746.00'$   
 $P.C. STA = 54+75.97$   
 $P.T. STA = 60+24.02$   
 $F.S. STA = 53+66.45 - 61+12.45$



**LEGEND**

- CLASS B PATCHES - 10" (SEE STANDARD 442101)
- P.C.C. SURFACE REMOVAL (PARTIAL DEPTH)
- CONCRETE CURB & GUTTER REMOVAL AND REPLACEMENT



FILE NAME = S:\TRANS\UP25208-STERL\IN\INBEL\VD2008\DESIGN\PL\YLN.DGN

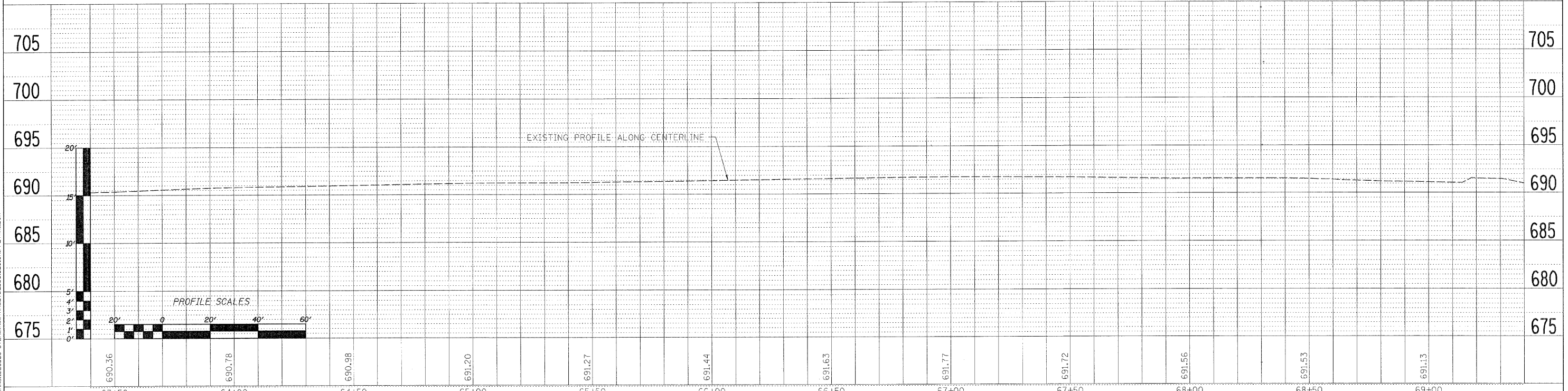
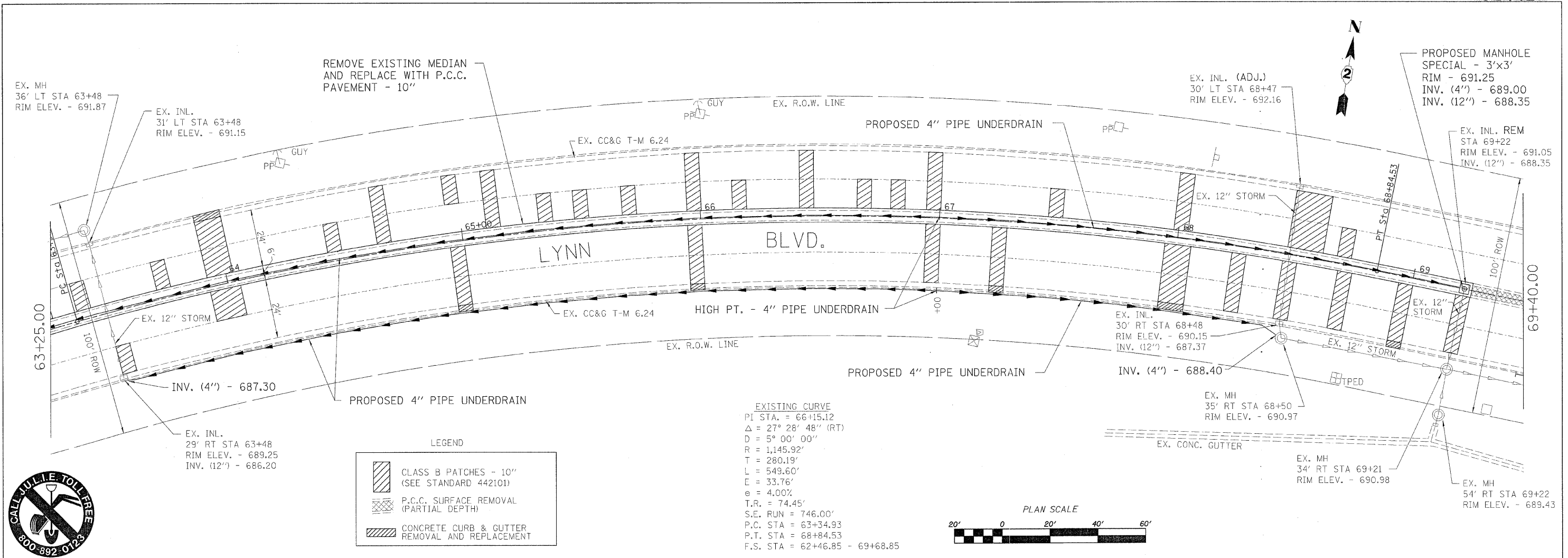
**WILLET, HOFMANN & ASSOCIATES, INC.**  
 CONSULTING ENGINEERS  
 600 East Second Street, Dixon, IL 61021  
 Phone 815.284.3381 Fax 815.284.3385  
 Design Firm # 184-00918  
 www.willettthofmann.com

DESIGNED -	REVISED -
DRAWN -	REVISED -
CHECKED -	REVISED -
DATE -	REVISED -

**CITY OF STERLING, ILLINOIS**  
**LYNN BLVD. - 16TH AVE. TO FREEPORT RD.**

**LYNN BLVD PLAN & PROFILE**  
 SCALE: \_\_\_\_\_ SHEET NO. \_\_\_\_ OF \_\_\_\_ SHEETS STA. \_\_\_\_\_ TO STA. \_\_\_\_\_

F.A. RTE.	SECTION	COUNTY	TOTAL SHEETS	SHEET NO.
	06-00141-00-RS	WHITESIDE	16	7
FED. ROAD DIST. NO. _____ ILLINOIS FED. AID PROJECT			CONTRACT NO. _____	



**WILLET, HOFMANN & ASSOCIATES, INC.**  
 CONSULTING ENGINEERS  
 809 East Second Street, Dixon, IL 61021  
 Phone 815.284.3381 Fax 815.284.3385  
 Design Firm 184-00918  
 www.willettthofmann.com

DESIGNED -	REVISED -
DRAWN -	REVISED -
CHECKED -	REVISED -
DATE -	REVISED -

**CITY OF STERLING, ILLINOIS**  
**LYNN BLVD. - 16TH AVE. TO FREEPORT RD.**

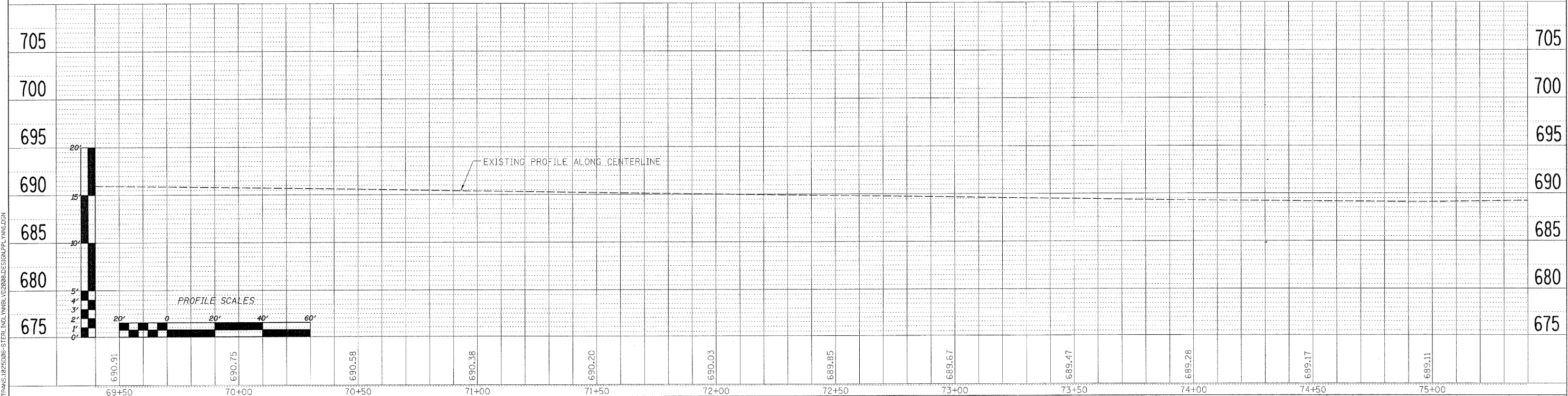
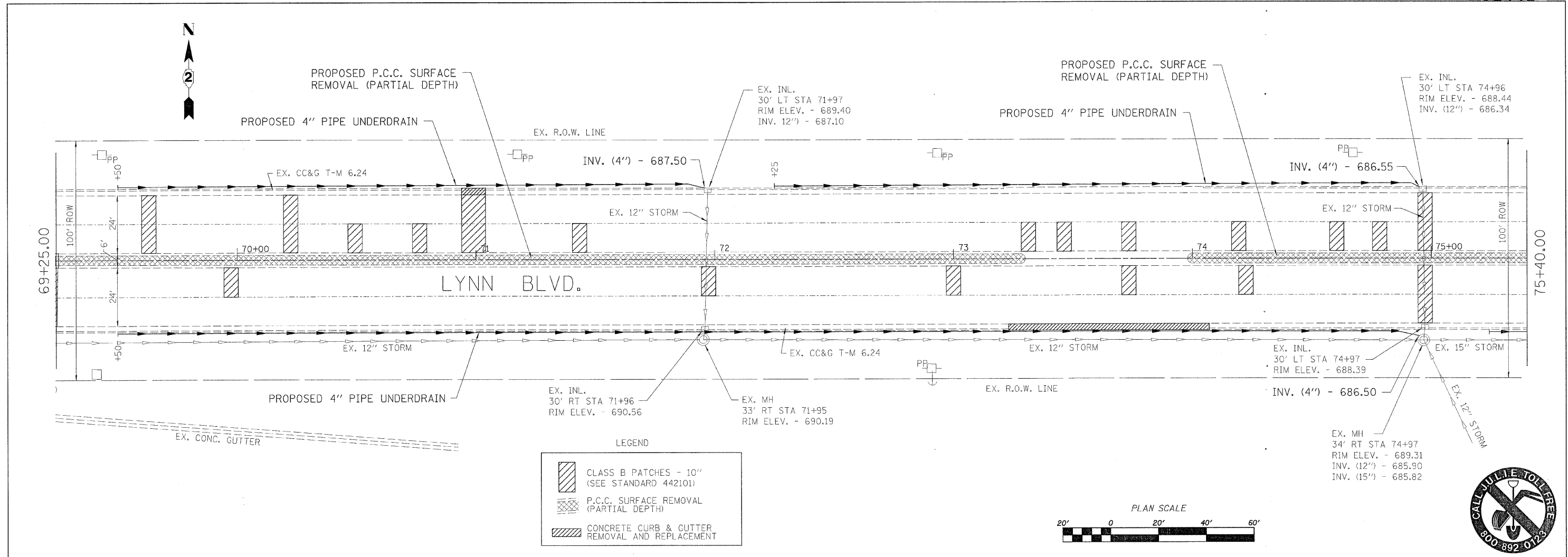
**LYNN BLVD PLAN & PROFILE**

SCALE: SHEET NO. \_\_ OF \_\_ SHEETS STA. \_\_\_\_\_ TO STA. \_\_\_\_\_

F.A. RTE.	SECTION	COUNTY	TOTAL SHEETS	SHEET NO.
	06-00141-00-RS	WHITESIDE	16	8
FED. ROAD DIST. NO.			ILLINOIS FED. AID PROJECT	

FILE NAME = S:\TRANS\1025028-STERLING\IN\LYNNBLVD\2008.DESIGN\PL\YNNL.DGN





FILE NAME = S:\TRANS\102500-STERL\INC\LNBL\VC202088\DESIGN\PL\XNBL.DGN

**WILLET, HOFMANN & ASSOCIATES, INC.**  
**CONSULTING ENGINEERS**  
 800 East Second Street, Dixon, IL 61021  
 Phone 815.284.3381 Fax 815.284.3385  
 Design Firm # 184-00918  
 www.willett-hofmann.com

DESIGNED -	REVISED -
DRAWN -	REVISED -
CHECKED -	REVISED -
DATE -	REVISED -

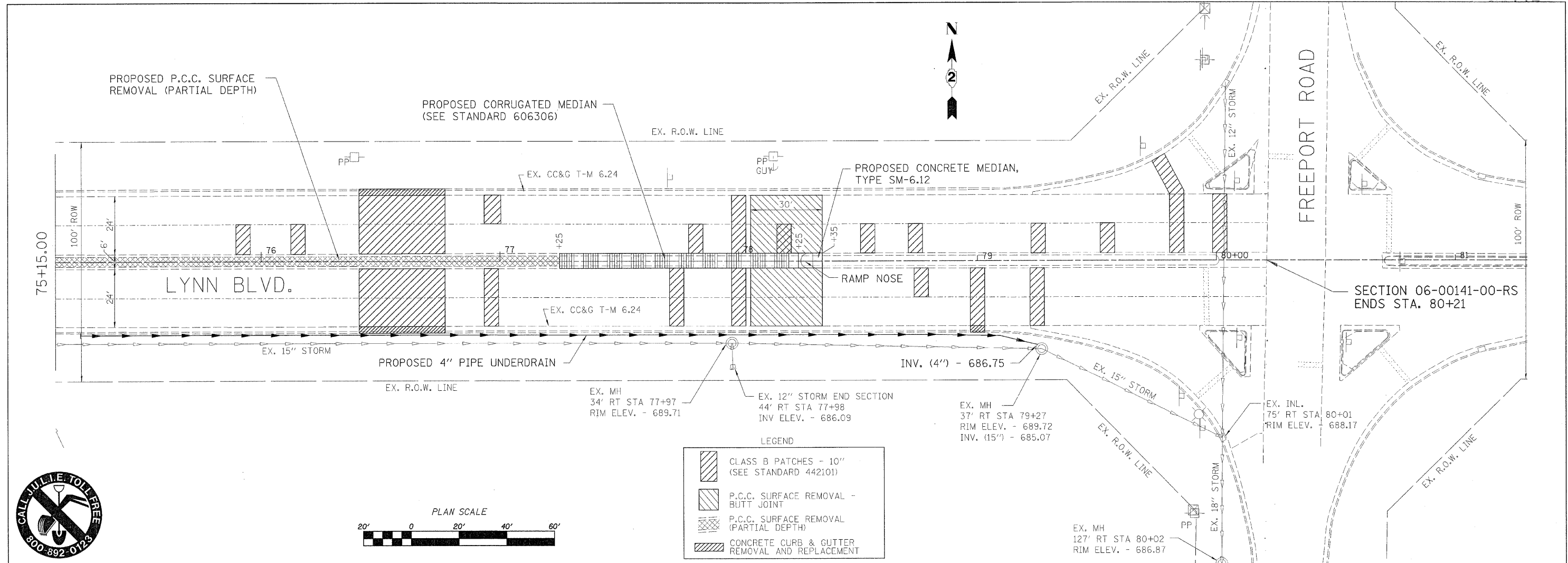
**CITY OF STERLING, ILLINOIS**  
**LYNN BLVD. - 16TH AVE. TO FREEPORT RD.**

**LYNN BLVD PLAN & PROFILE**

SCALE: SHEET NO. \_\_\_ OF \_\_\_ SHEETS STA. \_\_\_\_\_ TO STA. \_\_\_\_\_

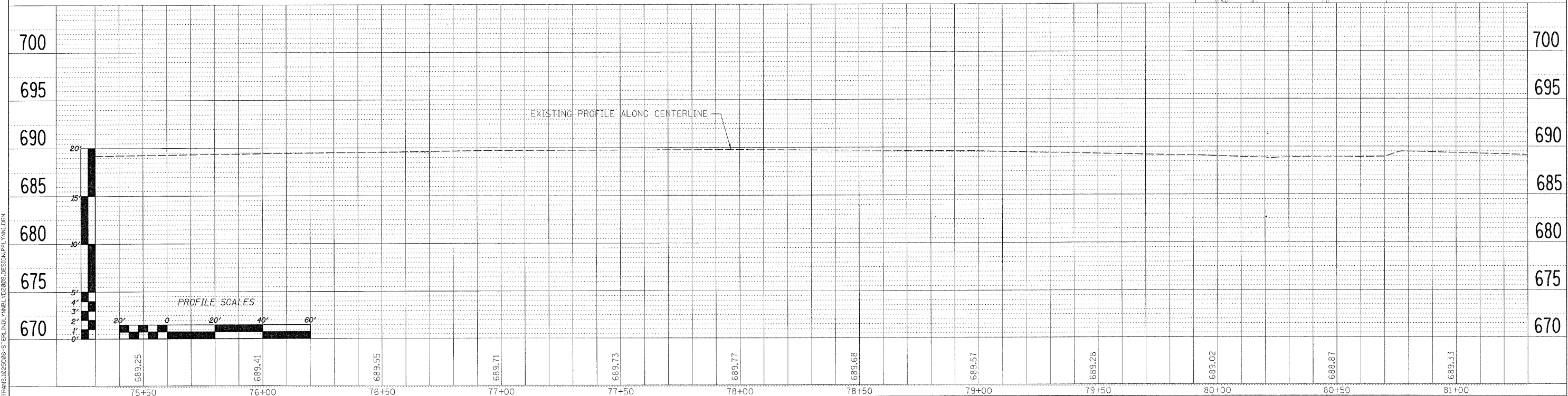
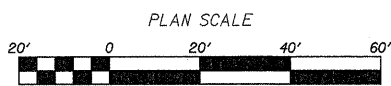
F.A. RTE.	SECTION	COUNTY	TOTAL SHEETS	SHEET NO.
	06-00141-00-RS	WHITESIDE	16	9
FED. ROAD DIST. NO. _____ ILLINOIS FED. AID PROJECT			CONTRACT NO. _____	





LEGEND

- CLASS B PATCHES - 10" (SEE STANDARD 442101)
- P.C.C. SURFACE REMOVAL - BUTT JOINT
- P.C.C. SURFACE REMOVAL (PARTIAL DEPTH)
- CONCRETE CURB & GUTTER REMOVAL AND REPLACEMENT



FILE NAME = S:\TRANS\022000-STERL\IN\WBL\VD2000.DESIGN\PL\YLN1.DGN

**WILLET, HOFMANN & ASSOCIATES, INC.**  
**CONSULTING ENGINEERS**  
 809 East Second Street, Dixon, IL 61021  
 Phone 815.284.3381 Fax 815.284.3385  
 Design Firm # 184-00918  
 www.willett-hofmann.com

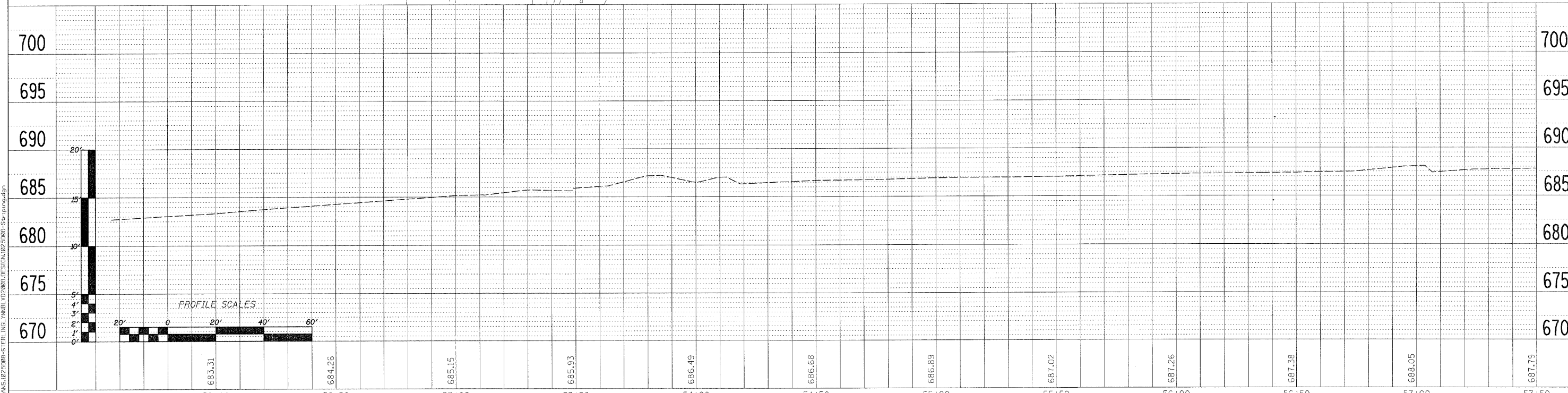
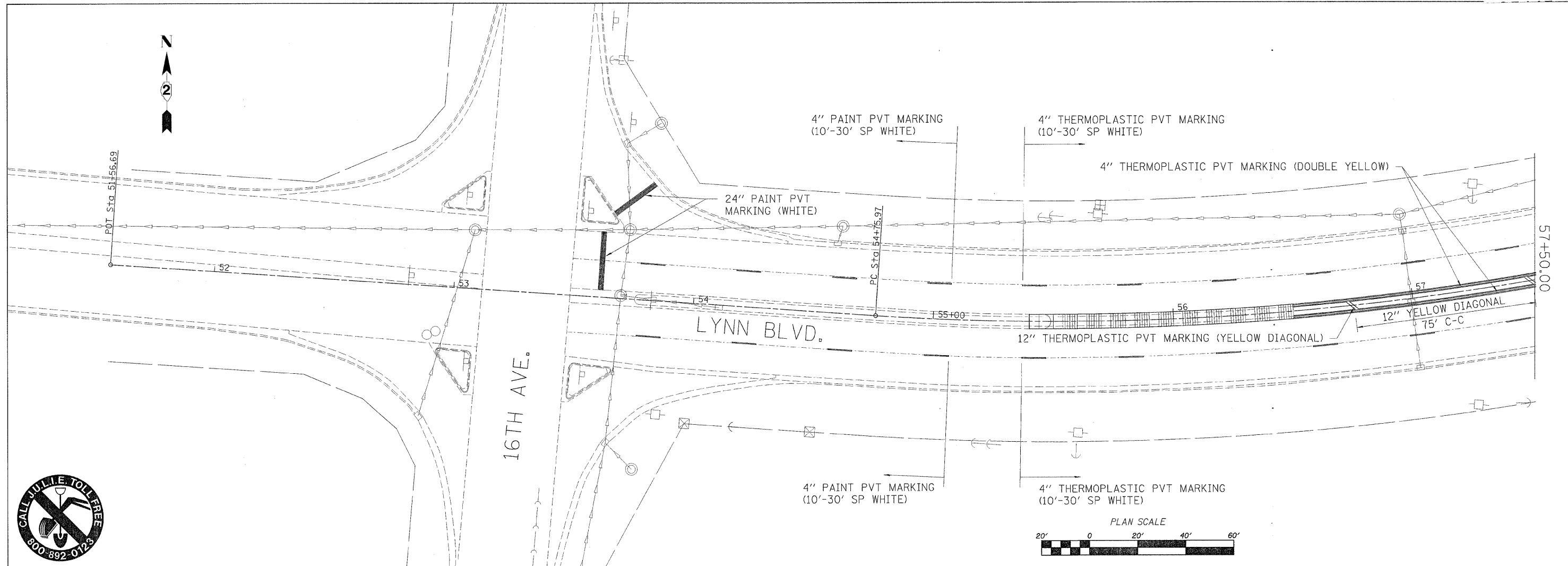
DESIGNED -	REVISED -
DRAWN -	REVISED -
CHECKED -	REVISED -
DATE -	REVISED -

**CITY OF STERLING, ILLINOIS**  
**LYNN BLVD. - 16TH AVE. TO FREEPORT RD.**

**LYNN BLVD PLAN & PROFILE**

SCALE: \_\_\_\_\_ SHEET NO. \_\_\_\_ OF \_\_\_\_ SHEETS STA. \_\_\_\_\_ TO STA. \_\_\_\_\_

F.A. RTE.	SECTION	COUNTY	TOTAL SHEETS	SHEET NO.
	06-00141-00-RS	WHITESIDE	16	10
FED. ROAD DIST. NO. _____ ILLINOIS FED. AID PROJECT			CONTRACT NO. _____	



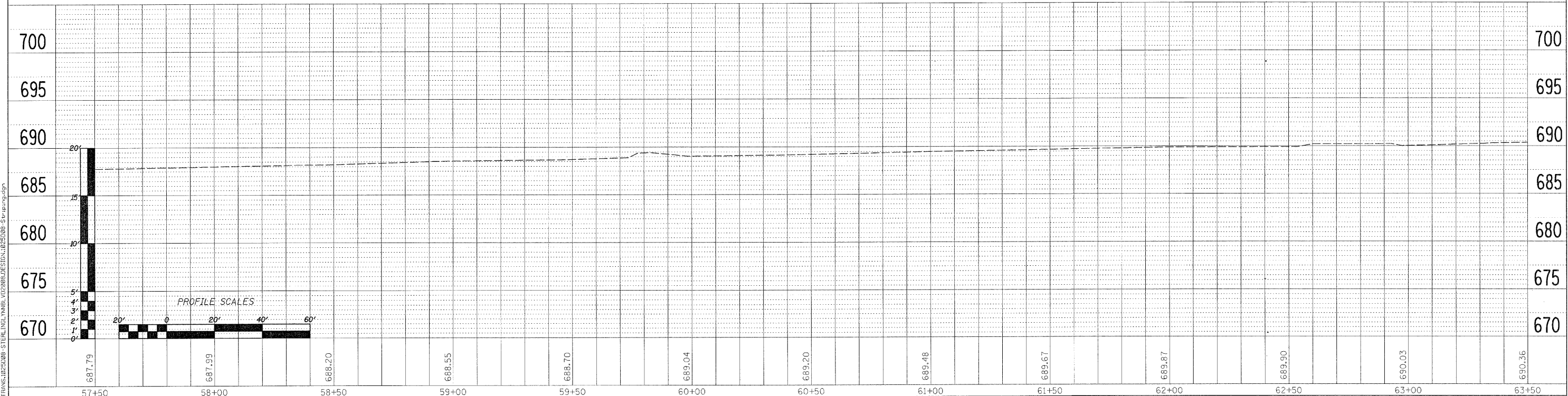
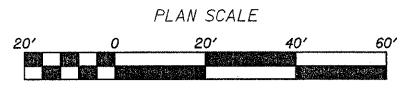
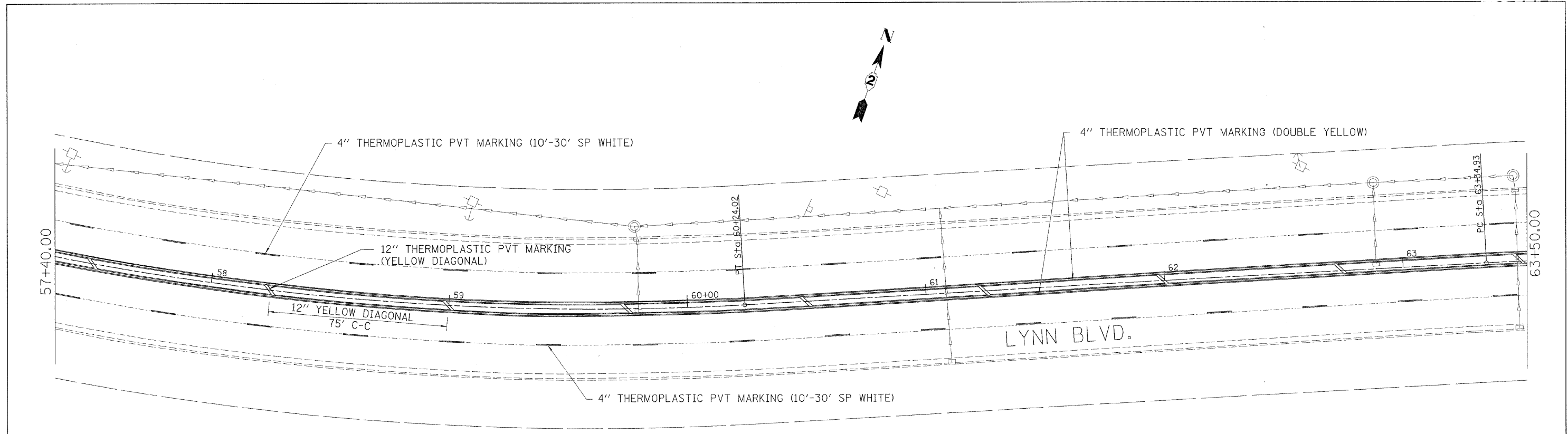
<p>WILLETT, HOFMANN &amp; ASSOCIATES, INC. CONSULTING ENGINEERS 800 East Second Street, Dixon, IL 61021 Phone: 815.284.3381 Fax: 815.284.3385 Design Firm # 184-00918 www.willett-hofmann.com</p>	DESIGNED -	REVISED -
	DRAWN -	REVISED -
	CHECKED -	REVISED -
	DATE -	REVISED -

**CITY OF STERLING, ILLINOIS**  
**LYNN BLVD. - 16TH AVE. TO FREEPORT RD.**

**LYNN BLVD PAVEMENT MARKING**

SCALE: \_\_\_\_\_ SHEET NO. \_\_\_\_ OF \_\_\_\_ SHEETS STA. \_\_\_\_\_ TO STA. \_\_\_\_\_

F.A. -	SECTION	COUNTY	TOTAL	SHEET
RT. -	06-00141-00-RS	WHITESIDE	16	11
FED. ROAD DIST. NO. _____ ILLINOIS FED. AID PROJECT			CONTRACT NO. _____	



FILE NAME = S:\TRANS\1025008-STERLING\11\NBL\1025008.DESIGN\1025008-STR.PAV.DWG

**WILLET, HOFMANN & ASSOCIATES, INC.**  
**CONSULTING ENGINEERS**  
 800 East Second Street, Dixon, IL 61021  
 Phone 815.284.3381 Fax 815.284.3385  
 Design Firm # 184-00918  
 www.willett-hofmann.com

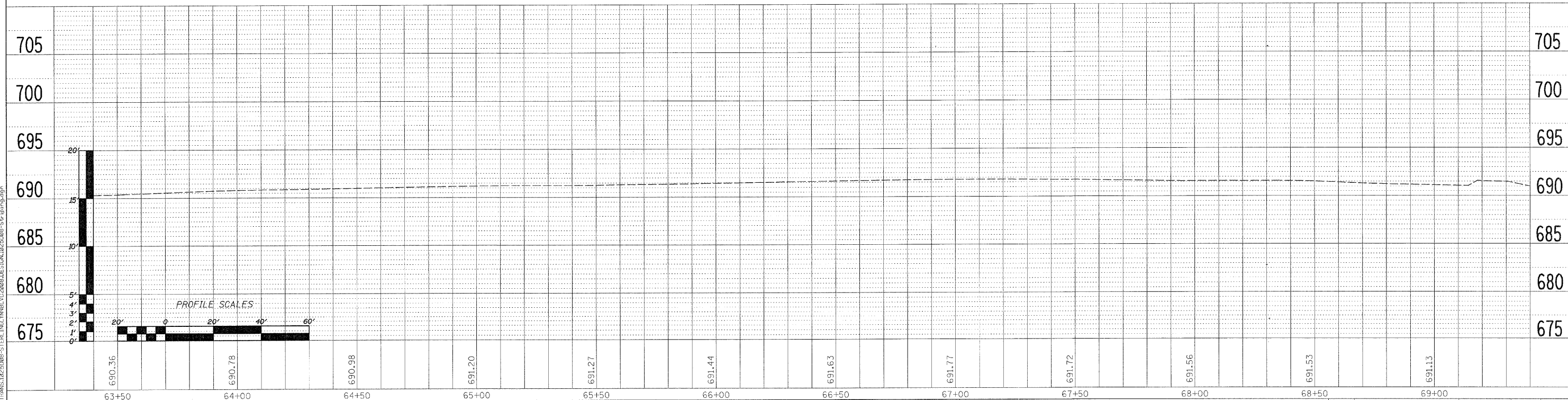
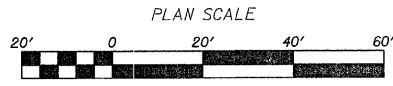
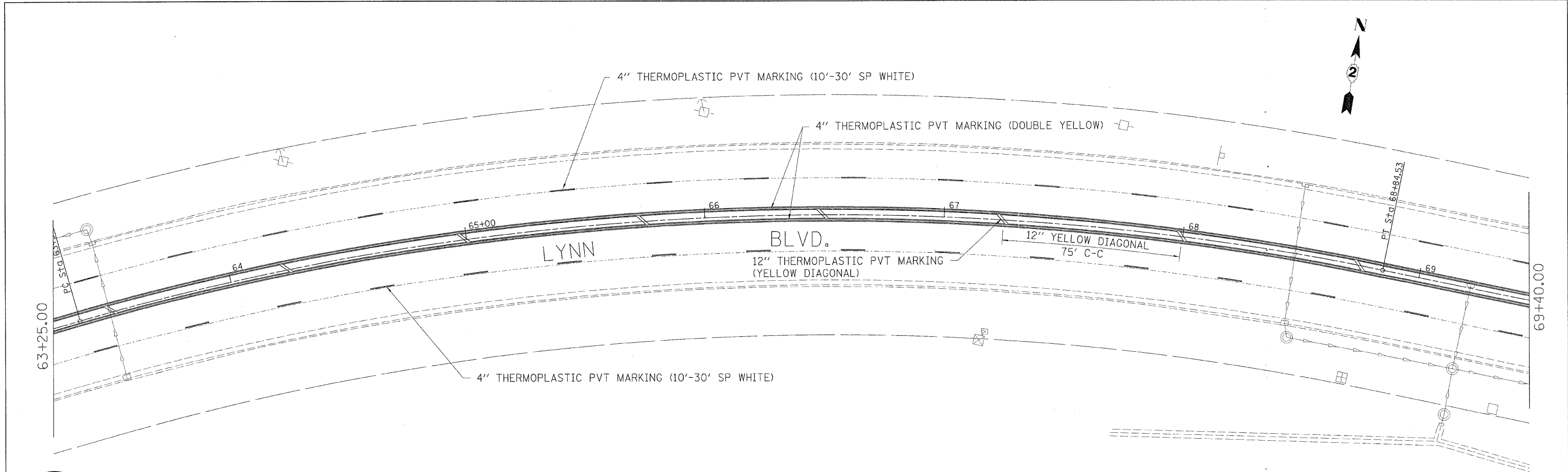
DESIGNED -	REVISED -
DRAWN -	REVISED -
CHECKED -	REVISED -
DATE -	REVISED -

**CITY OF STERLING, ILLINOIS**  
**LYNN BLVD. - 16TH AVE. TO FREEPORT RD.**

**LYNN BLVD PAVEMENT MARKING**

F.A. RTIE.	SECTION	COUNTY	TOTAL SHEETS	SHEET NO.
	06-00141-00-RS	WHITESIDE	16	12
FED. ROAD DIST. NO. ILLINOIS FED. AID PROJECT			CONTRACT NO.	

SCALE: SHEET NO. \_\_\_ OF \_\_\_ SHEETS STA. \_\_\_\_\_ TO STA. \_\_\_\_\_



FILE NAME = S:\TRANS\1252005-STERL\IN\BL\VC2888\DESIGN\DESIGN\Stp-Plan.dwg

**WILLET, HOFMANN & ASSOCIATES, INC.**  
**CONSULTING ENGINEERS**  
 800 East Second Street, Dixon, IL 61021  
 Phone: 815.284.3381 Fax: 815.284.3385  
 Design Firm # 184-00918  
 www.willett-hofmann.com

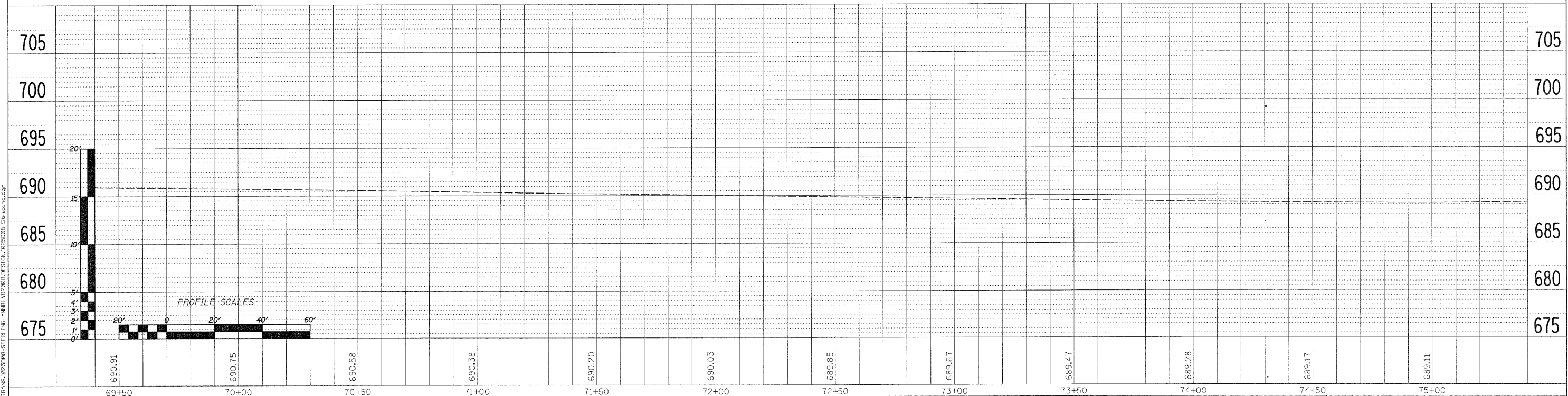
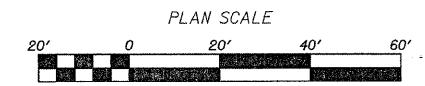
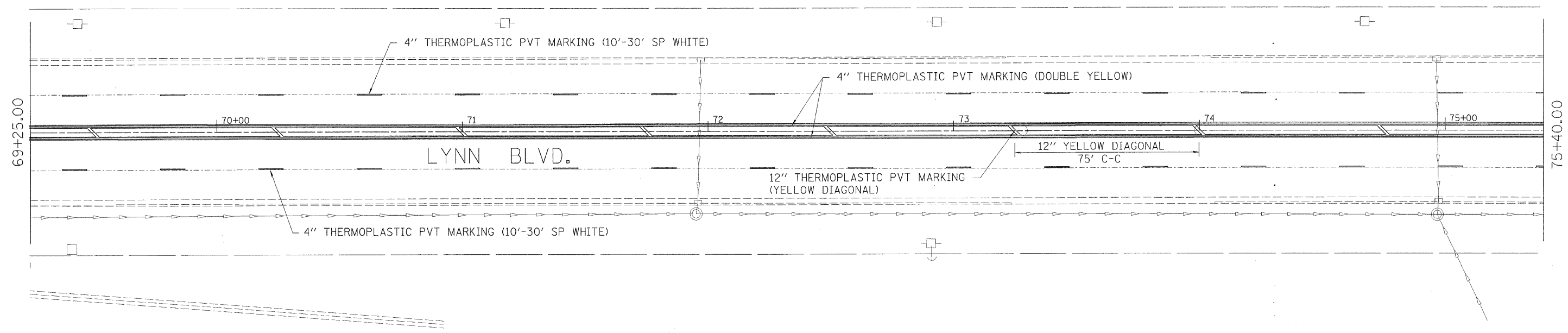
DESIGNED -	REVISED -
DRAWN -	REVISED -
CHECKED -	REVISED -
DATE -	REVISED -

**CITY OF STERLING, ILLINOIS**  
**LYNN BLVD. - 16TH AVE. TO FREEPORT RD.**

**LYNN BLVD PAVEMENT MARKING**

F.A. RTE.	SECTION	COUNTY	TOTAL SHEETS	SHEET NO.
	06-00141-00-RS	WHITESIDE	16	13
FED. ROAD DIST. NO. _____ ILLINOIS FED. AID PROJECT			CONTRACT NO. _____	

SCALE: SHEET NO. \_\_\_ OF \_\_\_ SHEETS STA. \_\_\_\_\_ TO STA. \_\_\_\_\_



FILE NAME = S:\TRANS\02\PC00B-STERLING\INBEL\02\00B.DWG\SECTION\02\00B-S-PLAN.dwg

**WILLET, HOFMANN & ASSOCIATES, INC.**  
**CONSULTING ENGINEERS**  
 800 East Second Street, Dixon, IL 61021  
 Phone: 815.284.3381 Fax: 815.284.3385  
 Design Firm # 184-00918  
 www.willett-hofmann.com

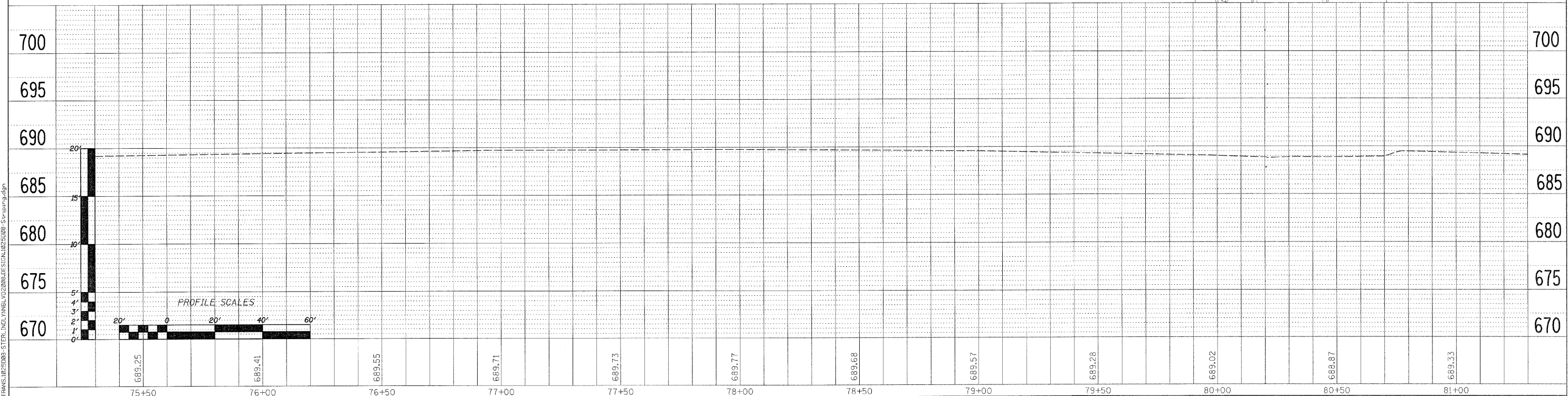
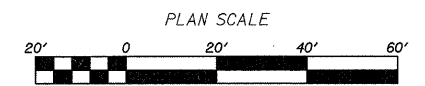
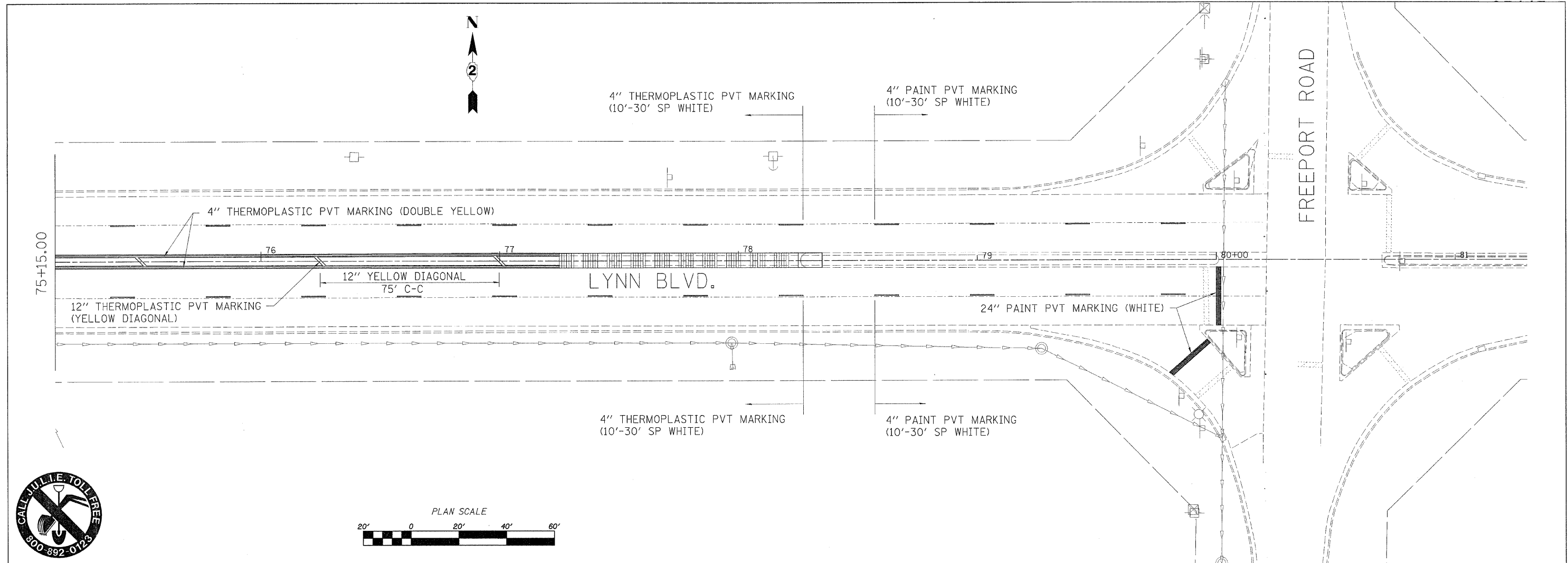
DESIGNED -	REVISED -
DRAWN -	REVISED -
CHECKED -	REVISED -
DATE -	REVISED -

**CITY OF STERLING, ILLINOIS**  
**LYNN BLVD. - 16TH AVE. TO FREEPORT RD.**

**LYNN BLVD PAVEMENT MARKING**

F.A. RTE.	SECTION	COUNTY	TOTAL SHEETS	SHEET NO.
	06-00141-00-RS	WHITESIDE	16	14
FED. ROAD DIST. NO. - ILLINOIS FED. AID PROJECT			CONTRACT NO. -	

SCALE: SHEET NO. \_\_\_\_ OF \_\_\_\_ SHEETS STA. \_\_\_\_\_ TO STA. \_\_\_\_\_



FILE NAME = S:\TRANS\UP2008\STERLING\LYNNBLVD\DESIGN\UP2008\STERLING.dgn

**WILLET, HOFMANN & ASSOCIATES, INC.**  
**CONSULTING ENGINEERS**  
 809 East Second Street, Dixon, IL 61021  
 Phone 815.284.3381 Fax 815.284.3385  
 Design Firm # 184-00918  
 www.willett-hofmann.com

DESIGNED -	REVISED -
DRAWN -	REVISED -
CHECKED -	REVISED -
DATE -	REVISED -

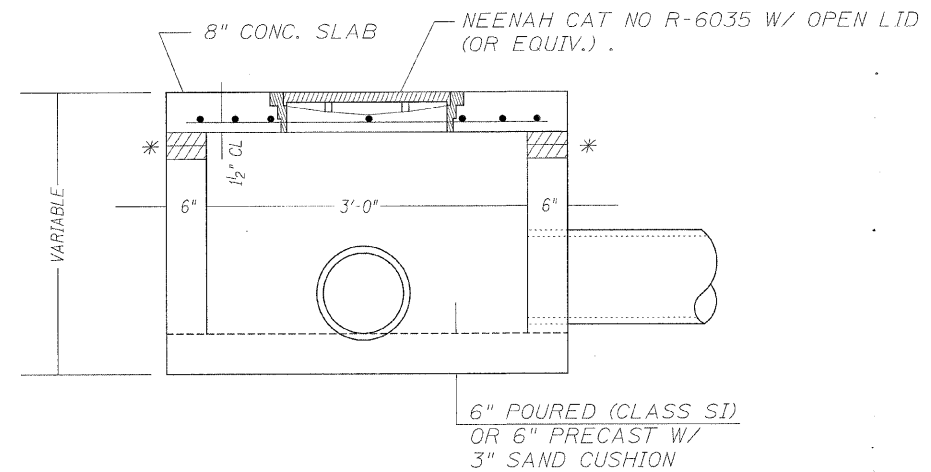
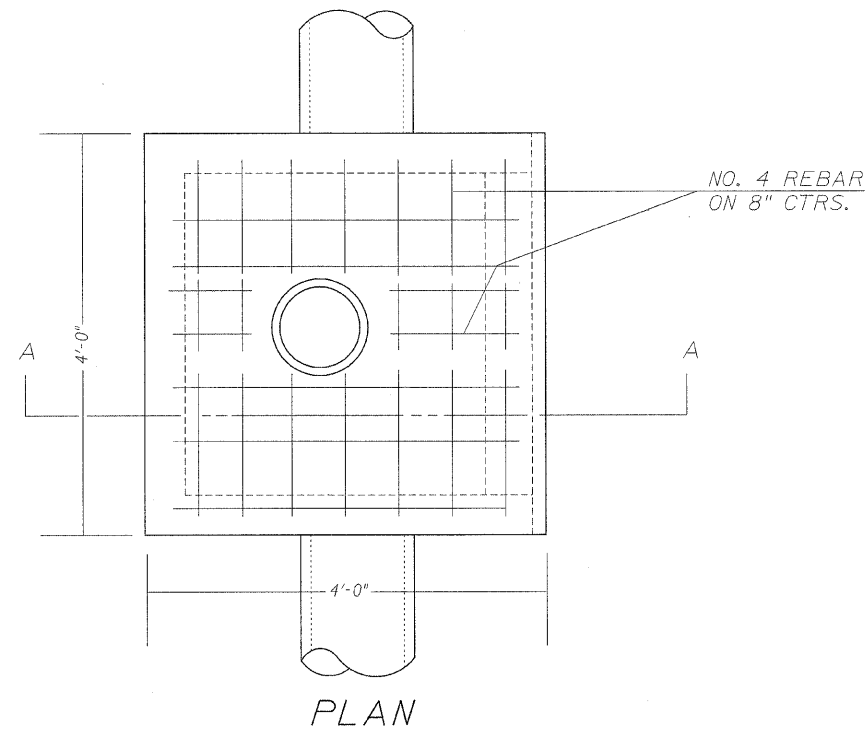
**CITY OF STERLING, ILLINOIS**  
**LYNN BLVD. - 16TH AVE. TO FREEPORT RD.**

**LYNN BLVD PAVEMENT MARKING**

F.A. RTE.	SECTION	COUNTY	TOTAL SHEETS	SHEET NO.
	06-00141-00-RS	WHITESIDE	16	15
CONTRACT NO.				

SCALE: SHEET NO. \_\_\_ OF \_\_\_ SHEETS STA. \_\_\_\_\_ TO STA. \_\_\_\_\_ FED. ROAD DIST. NO. \_\_\_\_\_ ILLINOIS FED. AID PROJECT

# MANHOLE, SPECIAL



**NOTES:**

THE MANHOLE SHALL BE CAST IN-PLACE OR PRECAST.

EXCEPT AS NOTED HEREON MANHOLE SPECIAL SHALL BE CONSTRUCTED IN ACCORDANCE WITH SECTION 602 OF THE STANDARD SPECIFICATIONS.

THE CONTRACT UNIT PRICE EACH FOR MANHOLE SPECIAL SHALL INCLUDE THE COST OF FURNISHING AND INSTALLING THE FRAME, LID, REINFORCEMENT BARS, FLOOR AND TOP SLABS.

CLASS SI CONCRETE OR PRECAST CONCRETE SHALL BE USED THROUGHOUT.

THE SIDE WALL MAY BE BUILT AS PRECAST SEGMENTAL SECTIONS.

THE HEIGHT OF THE BOX MAY BE CONSTRUCTED 6" SHORT TO ALLOW FOR FIELD ADJUSTMENTS.

\* THE WALL ADJUSTMENTS SHALL BE MADE WITH CONCRETE BUILDING BRICK OR CLASS SI CONCRETE.

55-3B

DESIGNED -	---	REVISED -	---
DRAWN -	---	REVISED -	---
CHECKED -	---	REVISED -	---
DATE -	-----	REVISED -	---

F.A. RTE.	SECTION	COUNTY	TOTAL SHEETS	SHEET NO.
	06-00141-00-RS	WHITESIDE	16	16
FED. ROAD DIST. NO. - [ILLINOIS] FED. AID PROJECT			CONTRACT NO. _____	