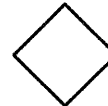





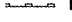


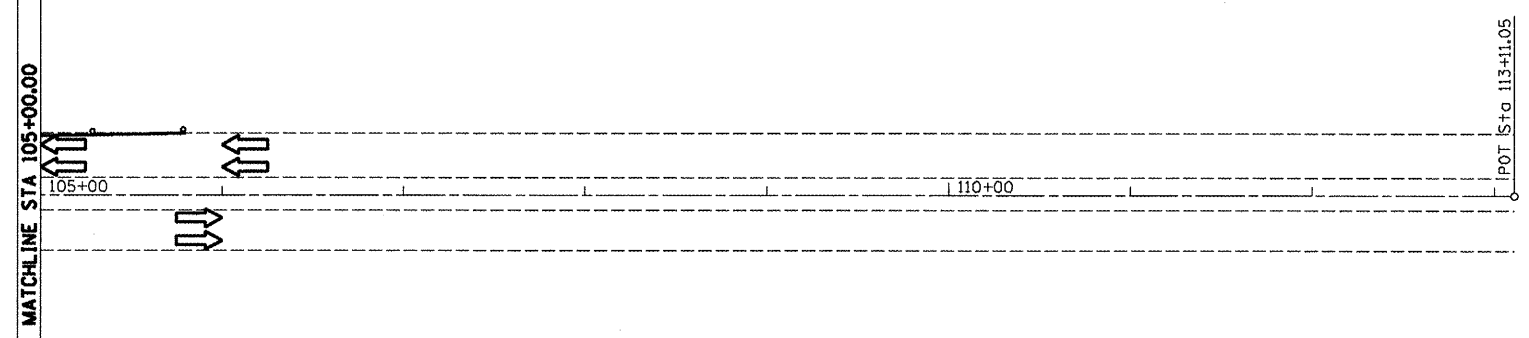
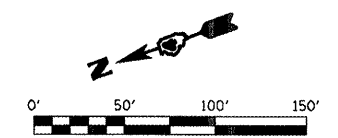
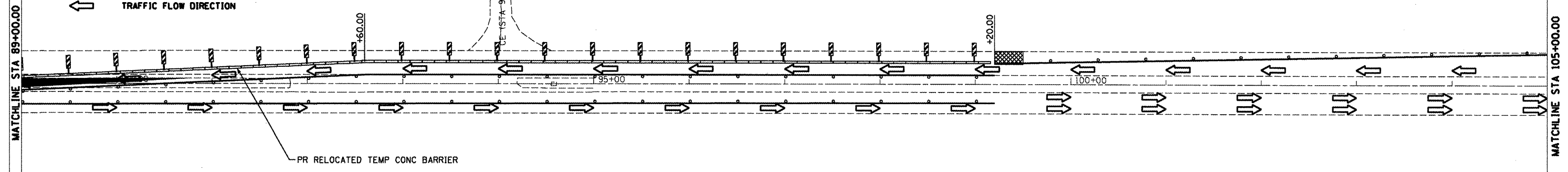
F.A.P. RTE.	SECTION	COUNTY	TOTAL SHEETS	SHEET NO.
64		PEORIA	183	38
STA.	TO STA.			
FED. ROAD DIST. NO.	ILLINOIS	IL RTE 29		
• (10,12)RS-6;(11)RS-4;(10B)BR				

LEGEND

-  PERMANENT CLOSURE
-  CONSTRUCTION ONLY
-  TRAFFIC FLOW DIRECTION
-  DRUM WITH STEADY BURN MONODIRECTIONAL LIGHT
-  FLEXIBLE DELINEATOR
-  IMPACT ATTENUATOR
-  PERIMETER EROSION BARRIER

STANDARDS

701011	701431
701101	702001
701421	704001
701426	BLR-22



10/17/2008
9 FILE ABBREV#

0001

COOMBE-BLOXDORF P.C.
Engineers / Land Surveyors
Springfield, Illinois
Design Firm License No. 184-002708

REVISIONS	
NAME	DATE

ILLINOIS DEPARTMENT OF TRANSPORTATION

**TRAFFIC CONTROL PLAN
STAGE 2**

SCALE: DATE AUG. 2008

DRAWN BY CFC
CHECKED BY MCB/GLS