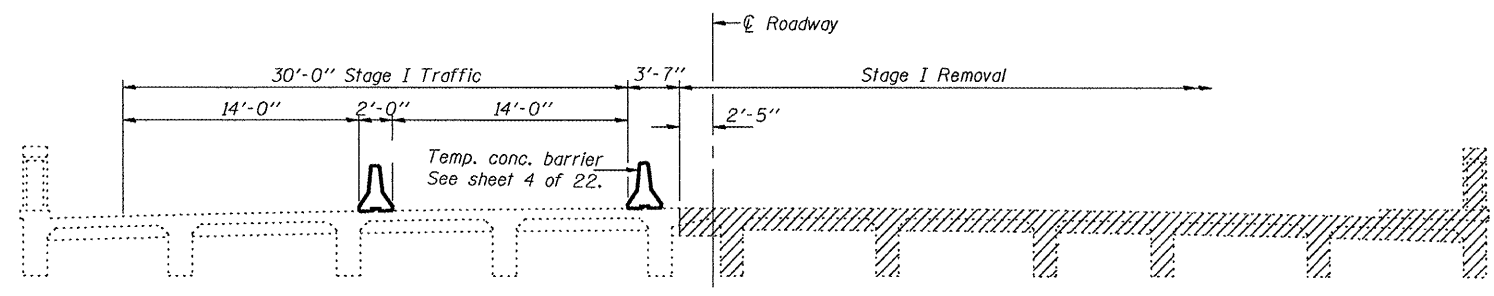
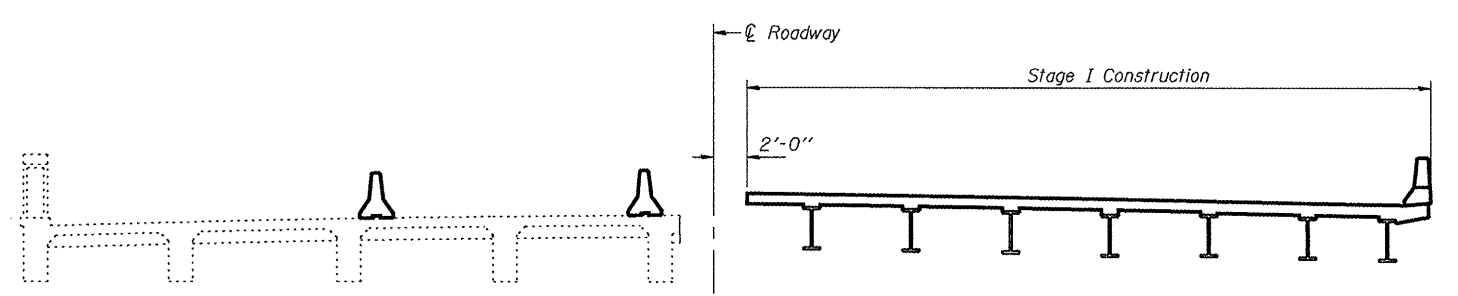


STATE OF ILLINOIS  
DEPARTMENT OF TRANSPORTATION

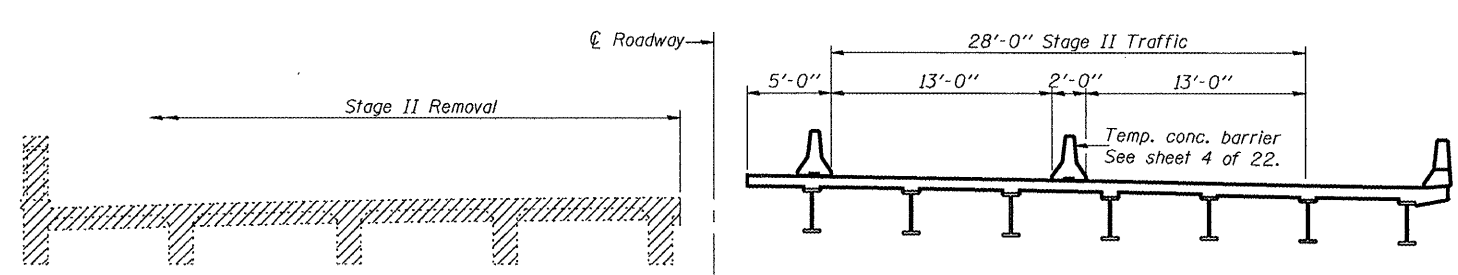
ROUTE NO.	SECTION	COUNTY	SHEETS	SHEET NO.	SHEET NO. 3 22 SHEETS
FAP 64	(10B)BR	PEORIA	186	43	
FED. ROAD DIST. NO. 7	ILLINOIS	FED. AID PROJECT-	Contract #88803		



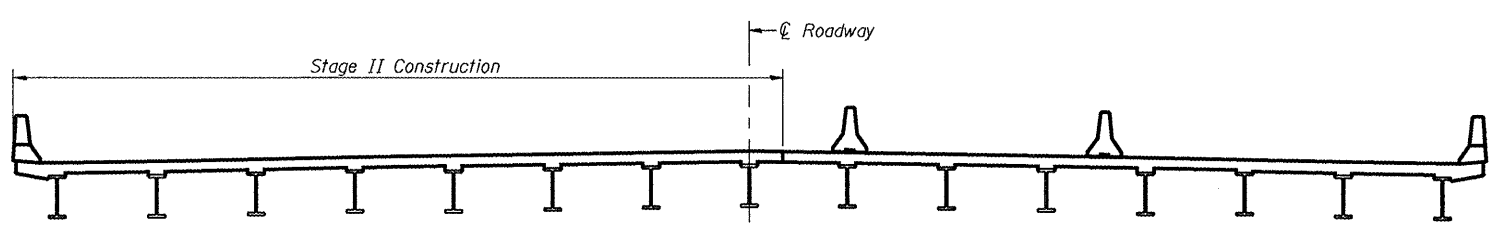
**STAGE I REMOVAL**



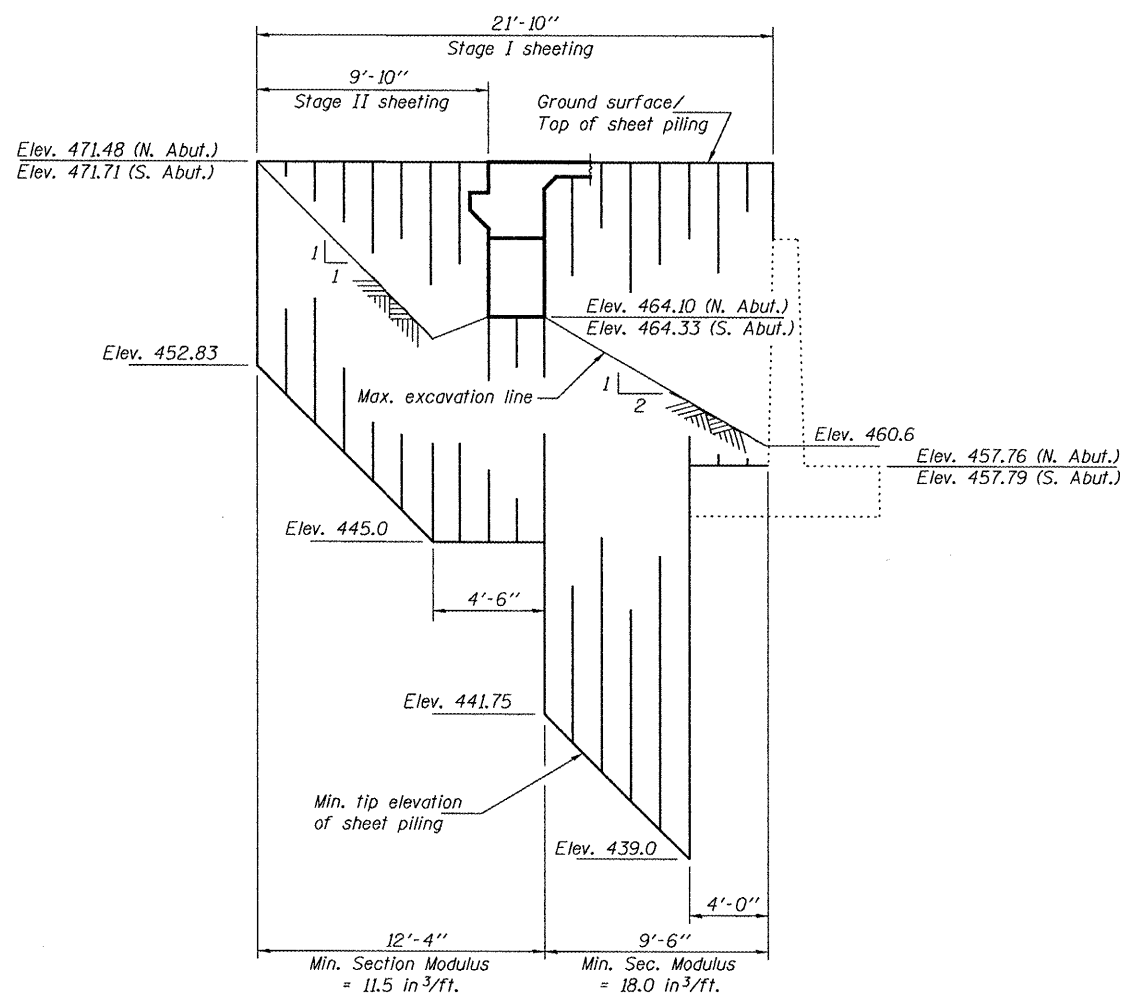
**STAGE I CONSTRUCTION**



**STAGE II REMOVAL**



**STAGE II CONSTRUCTION**



**TEMPORARY SHEET PILING AT ABUTMENTS**

Notes: If the Contractor chooses to alter the temporary cantilevered sheet piling design requirements shown on the plans, a design submittal including plan details and calculations will be required for review and acceptance by the Engineer.  
The Contractor shall connect the first sheet to the existing abutment wall to ensure stability of sheets driven to the top of the existing footing. This connection shall be reviewed and accepted by the Engineer and included in the cost for Temporary Sheet Piling.

Notes: All cross sections are looking south.  
For quantity of temporary concrete barrier, see roadway plans.  
Hatched area indicates removal of existing structures.

DESIGNED	D.P.C.
CHECKED	D.F.Z.
DRAWN	h.t. duong F.L.L. r.b. carbonell
CHECKED	D.P.C./D.F.Z.

November 13, 2008  
EXAMINED *Thomas J. Domagala*  
PASSED *Ralph E. Anderson*  
ENGINEER OF BRIDGES AND STRUCTURES

**STAGE CONSTRUCTION DETAILS**  
**F.A.P. RTE. 64 - SECTION (10B)BR**  
**PEORIA COUNTY**  
**STATION 80+69.5**  
**STRUCTURE NO. 072-0198**