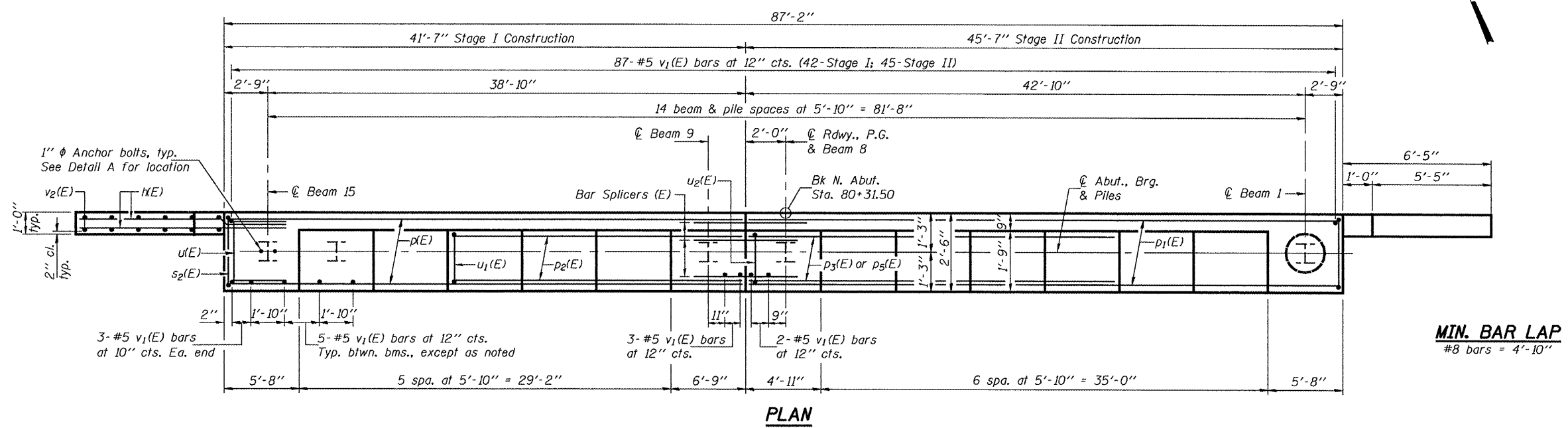
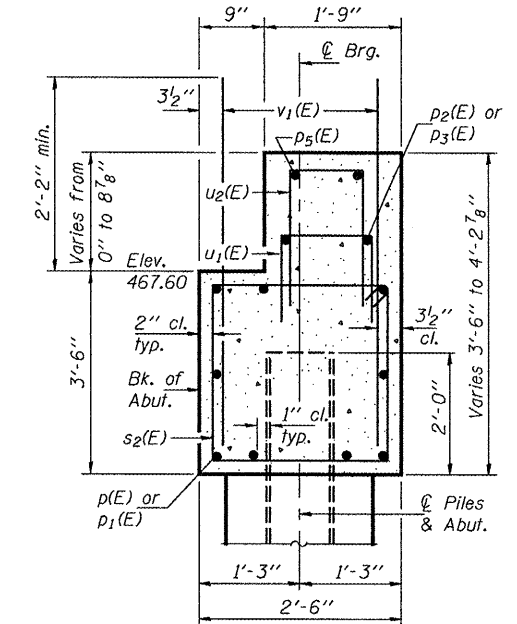
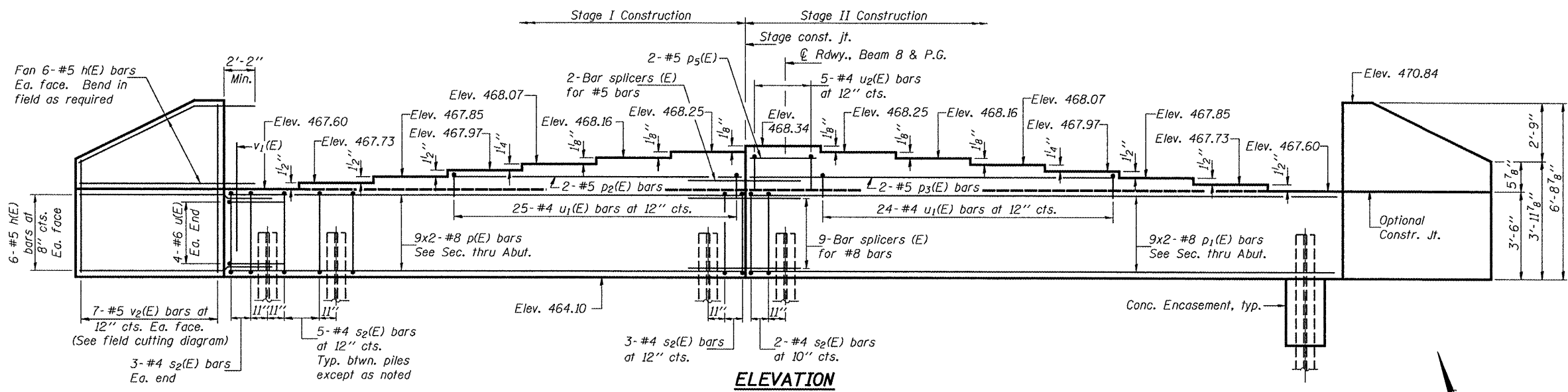


Notes: Four steps monolithically with cap.
See sheet 17 of 22 for bar splicer (E) details.
Space reinforcement in cap to miss anchor bolts.

STATE OF ILLINOIS
DEPARTMENT OF TRANSPORTATION

ROUTE NO.	SECTION	COUNTY	SHEET	POST	SHEET NO. 14 22 SHEETS
FAP 64	(10)BR	PEORIA	186	59	
FED. ROAD DIST. NO. 7		ILLINOIS	FED. AID PROJECT-		Contract #88803



BILL OF MATERIAL

Bar	No.	Size	Length	Shape
h(E)	48	#5	8'-11"	—
p(E)	18	#8	23'-1"	—
p1(E)	18	#8	25'-1"	—
p2(E)	2	#5	24'-1"	—
p3(E)	2	#5	28'-1"	—
ps(E)	2	#5	4'-9"	—
s2(E)	76	#4	11'-5"	□
u(E)	8	#6	9'-6"	—
u1(E)	49	#4	3'-11"	—
u2(E)	5	#4	4'-7"	—
v1(E)	163	#5	4'-4"	—
v2(E)	14	#5	10'-0"	—
Concrete Structures		Cu. Yd.	33.7	
Reinforcement Bars, Epoxy Coated		Pound	4600	
Furnishing Steel Piles HP12x53		Foot	714	
Test Pile Steel HP12x53		Each	1	
Driving Piles		Foot	714	
Structure Excavation		Cu. Yd.	207	
Bar Splicers		Each	11	
Concrete Encasement		Cu. Yd.	5.3	

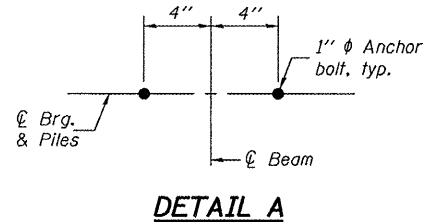
Concrete Structures Cu. Yd. 33.7
Reinforcement Bars, Epoxy Coated Pound 4600
Furnishing Steel Piles HP12x53 Foot 714
Test Pile Steel HP12x53 Each 1
Driving Piles Foot 714
Structure Excavation Cu. Yd. 207
Bar Splicers Each 11
Concrete Encasement Cu. Yd. 5.3

Bars indicated thus 9 x 2-#8 etc. indicates 9 lines of bars with 2 lengths per line.
For details of piles & concrete encasement, see sheet 16 of 22.

NORTH ABUTMENT
F.A.P. RTE. 64 - SECTION (10)BR
PEORIA COUNTY
STATION 80+69.5
STRUCTURE NO. 072-0198

PILE DATA

Type: Steel HP12x53
Nominal Required Bearing: 418 Kips
Factored Resistance Available: 209 Kips
Estimated Pile Length: 51'
No. Production Piles: 14
No. Test Piles: 1



DESIGNED	D.P.C.
CHECKED	D.F.Z.
DRAWN	h.f. duong F.L.L. r.b. carbonell
CHECKED	D.P.C./D.F.Z.

November 13, 2008
EXAMINED *Thomas J. Demagala*
PASSED *Ralph E. Anderson*
ENGINEER OF BRIDGE DESIGN
ENGINEER OF BRIDGES AND STRUCTURES

