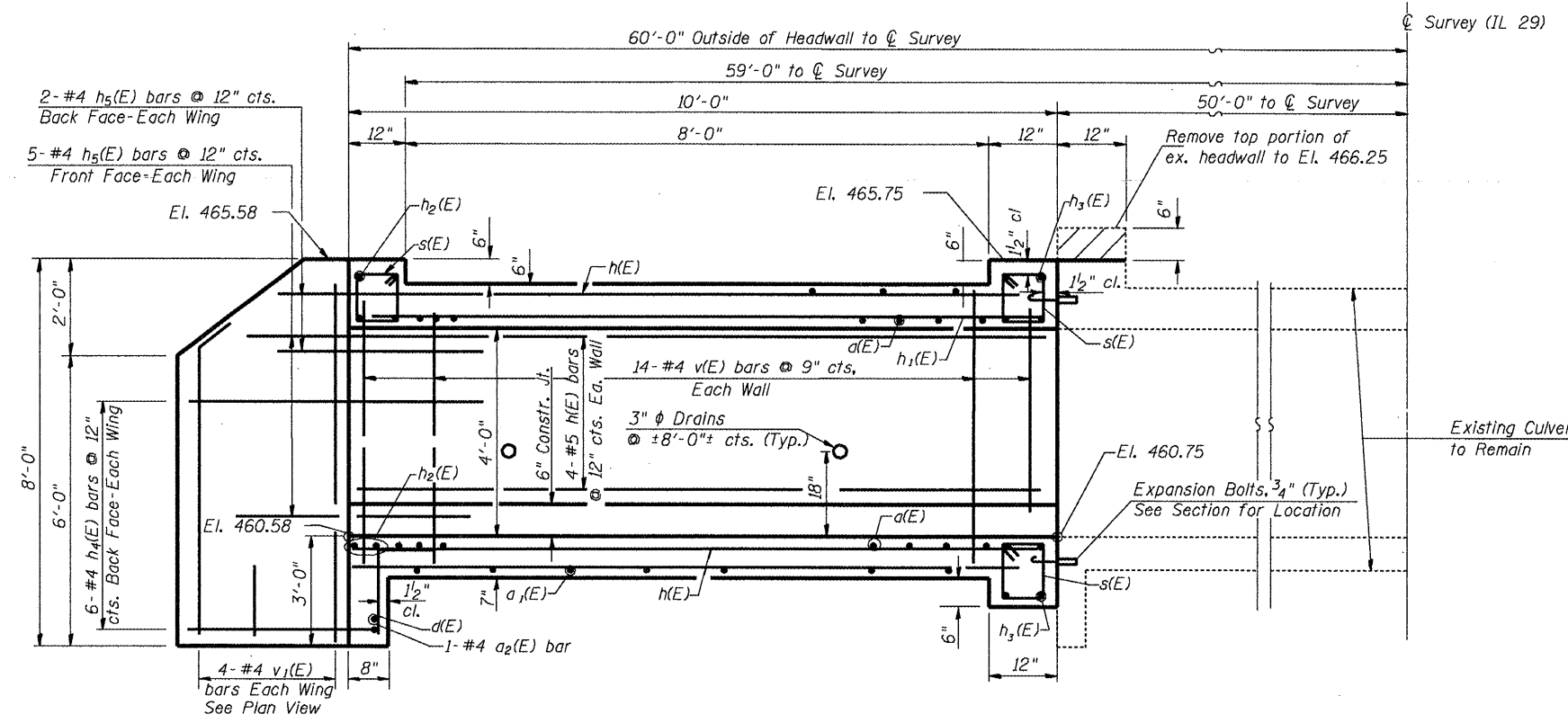
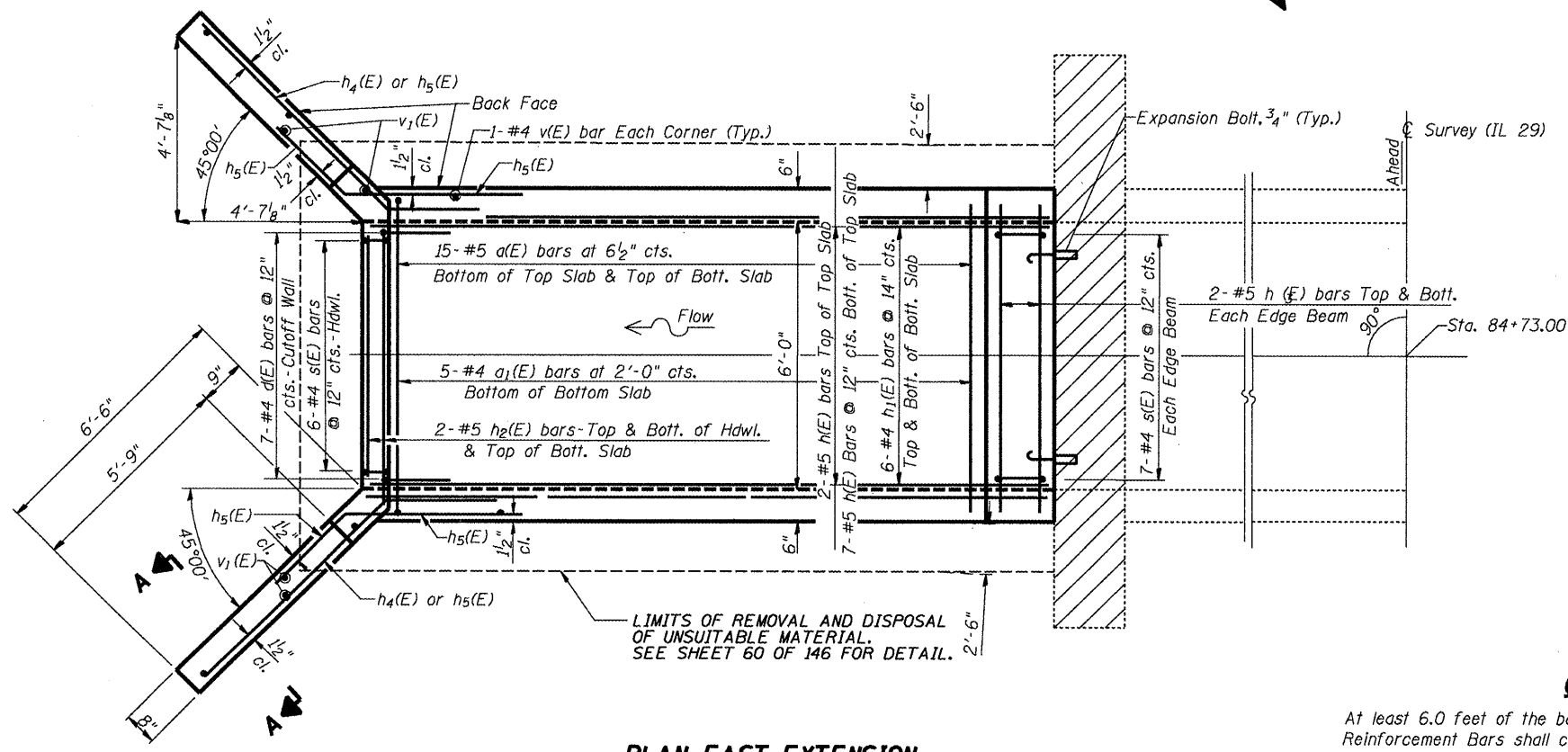


F.A.P. RTE.	SECTION	COUNTY	TOTAL SHEETS	SHEET NO.
64	*	PEORIA	186	68
FED. ROAD DIST. NO. 7		ILLINOIS	FED. AID PROJECT-	
CONTRACT 88803		* (18,12)RS-6(1)RS-4(10)BR		



ELEVATION - EAST EXTENSION

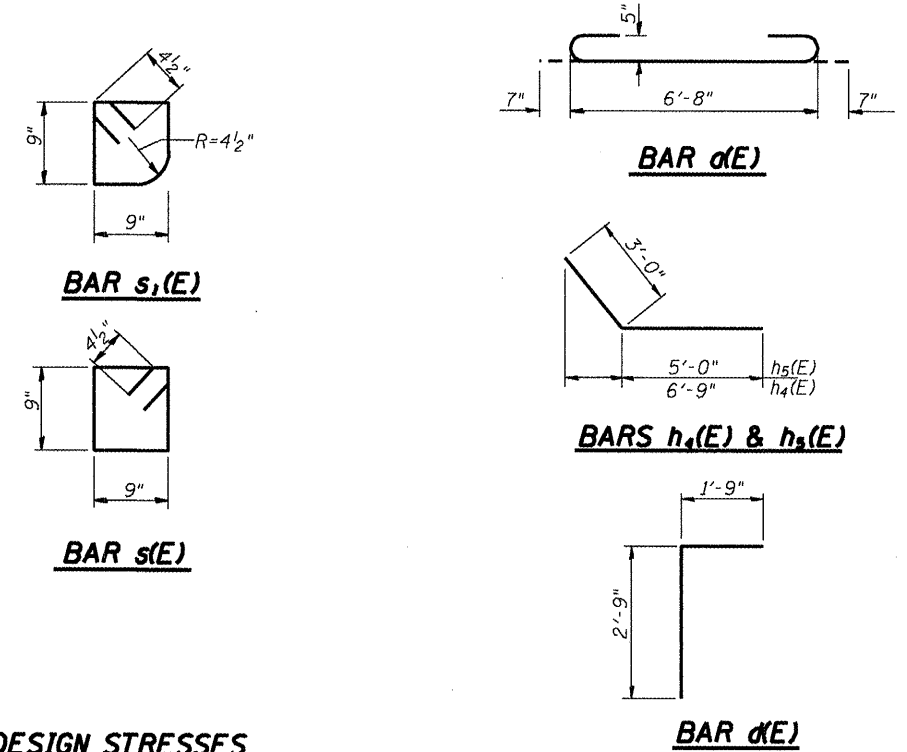
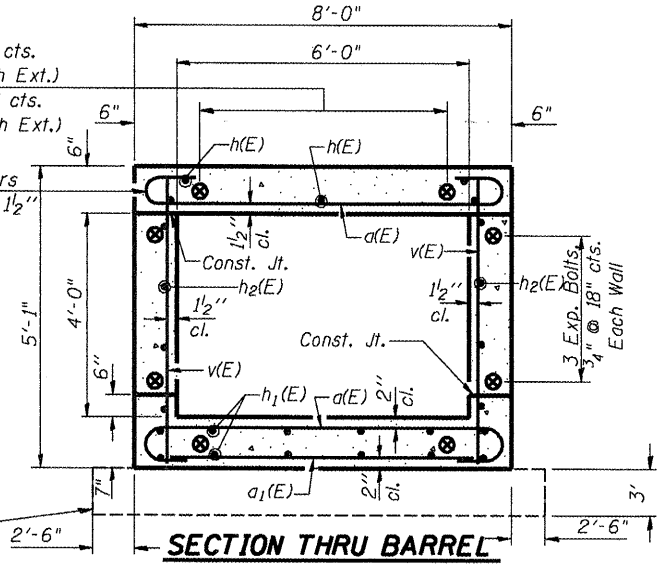


PLAN - EAST EXTENSION

5-Exp. Bolts $\frac{3}{4}$ " @ 15" cts.
Top & Bott. Slab (North Ext.)
4-Exp. Bolts $\frac{3}{4}$ " @ 20" cts.
Top & Bott. Slab (South Ext.)

Tilt hook of a bars if necessary for $1\frac{1}{2}$ " min. cl.

LIMITS OF REMOVAL AND DISPOSAL OF UNSUITABLE MATERIAL. SEE SHEET 60 OF 146 FOR DETAIL.



DESIGN STRESSES

$f'_c = 3,500$ psi
 $f_y = 60,000$ psi

DESIGN SPECIFICATIONS

1996 AASHTO and 1997 and 1998 Interims

LOADING MS18

Design provides for a future wearing surface of 2.4 kN/m²

GENERAL NOTES

At least 6.0 feet of the barrel shall be poured monolithically with the wingwalls. Reinforcement Bars shall conform to the requirements of AASHTO M-31M, M-42M or M-53M, Grade 400. For backfilling and embankment see Standard Specifications.

See Sheet 2 of 2 for Bill of Material, Section Thru Headwall and Section A-A.

ILLINOIS DEPARTMENT OF TRANSPORTATION	
SHEET TITLE CULVERT EXTENSION	
PROJECT FAP ROUTE 64 (IL 29) SECTION (10B) BR PEORIA COUNTY STATION 84+73.00	PROJECT NO. 01011 SCALE DATE 08/2008 DRAWN BY TFG/CFC CHECKED BY CCA/MCB DRAWING NO.
COOMBE-BLOXDORF P.C. Engineers/Land Surveyors Springfield, Illinois Design Firm License No. 184-002708	
1 OF 2 SHTS	

02/17/2008
#12183824

culvert-ext-east