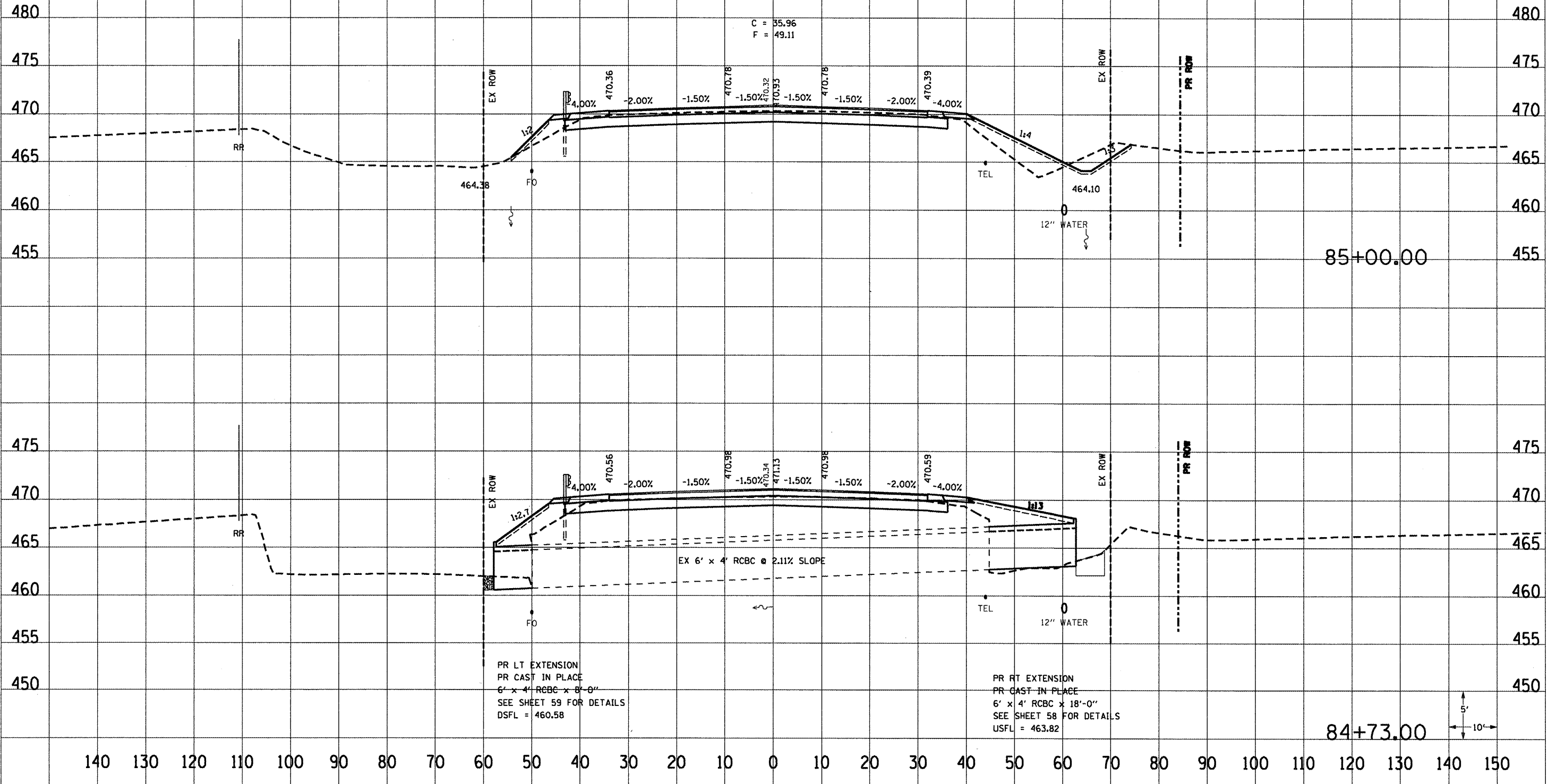


F.A.P. RYE	SECTION	COUNTY	TOTAL SHEETS	SHEET NO.
64		PEORIA	186	102
STA.		TO STA.		
FED. ROAD DISTRICT NO.		ILLINOIS FED. AID PROJECT		
CONTRACT 88803				

THE LOCATIONS OF EXISTING WATER MAINS, GAS MAINS, SEWERS, ELECTRIC POWER LINES, TELEPHONE LINES AND OTHER UTILITIES AS SHOWN ON THE PLANS ARE BASED ON CAREFUL FIELD INVESTIGATION AND THE BEST INFORMATION AVAILABLE, BUT THEY ARE NOT GUARANTEED. UNLESS ELEVATIONS ARE SHOWN ALL UTILITY LOCATIONS SHOWN ON THE CROSS SECTIONS ARE BASED ON THE APPROXIMATE DEPTH SUPPLIED BY THE UTILITY COMPANY. IT SHALL BE THE CONTRACTOR'S RESPONSIBILITY TO ASCERTAIN THEIR EXACT LOCATION FROM THE UTILITY COMPANIES AND BY FIELD INSPECTION.



PR LT EXTENSION
 PR CAST IN PLACE
 6' x 4' RCBC x 8'-0"
 SEE SHEET 59 FOR DETAILS
 DSFL = 460.58

PR RT EXTENSION
 PR CAST IN PLACE
 6' x 4' RCBC x 18'-0"
 SEE SHEET 58 FOR DETAILS
 USFL = 463.82

