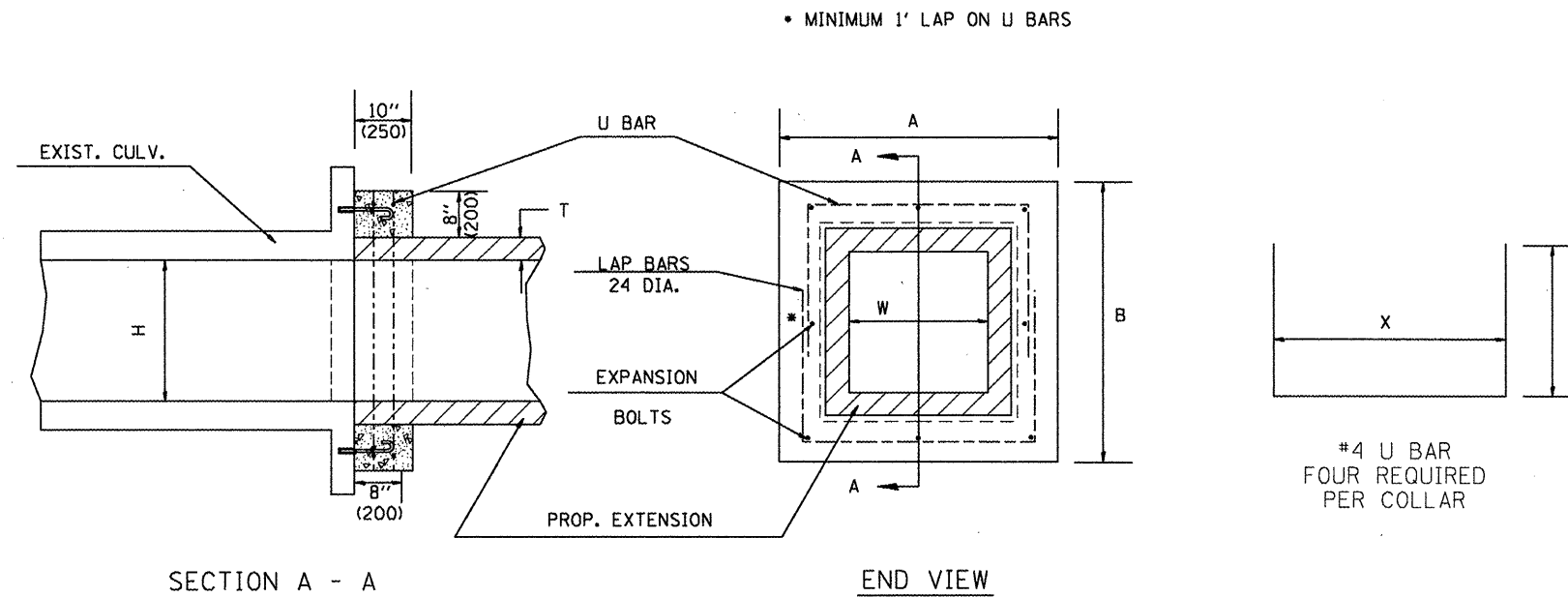


F.A.P. RTE.	SECTION	COUNTY	TOTAL SHEETS	SHEET NO.
64		PEORIA	186	170
STA.		TO STA.		
FED. ROAD DIST. NO.		ILLINOIS FED. AID PROJECT		



GENERAL NOTES

1. The collar shall be constructed entirely of CLASS SI CONCRETE and in accordance with the applicable portions of section 503 of the Standard Specifications. REINFORCEMENT BARS shall conform to section 508.
2. Expansion bolts shall consist of approved expansions anchors, and 3/4" (M20) hook bolts which conform to Section 1006.09. These bolts shall extend at least 8"(200) into the new concrete.

* Dimensions for ASTM C789.

DIMENSIONS

EXISTING BOX		A	B	T *	EACH COLLAR				
W ft (mm)	H ft (mm)				CL SI CU YD (m ³)	REINFORCEMENT BARS		EXPANSION BOLTS NO.	
					X	Y	POUNDS (kg)		
2 (600)	2 (600)	4'-0" (1.22m)	4'-0" (1.22m)	4(100)	0.27(0.21)	3'-4" (1.02m)	26(660)	20 (9)	8
3 (900)	2 (600)	5'-0" (1.52m)	4'-0" (1.22m)	4(100)	0.32(0.24)	4'-4" (1.32m)	26(660)	23 (10.5)	8
3 (900)	2.5 (750)	5'-0" (1.52m)	4'-6" (1.37m)	4(100)	0.34(0.26)	4'-4" (1.32m)	29(737)	24.5 (11)	8
3 (900)	3 (900)	5'-0" (1.52m)	5'-0" (1.52m)	4(100)	0.36(0.28)	4'-4" (1.32m)	32(813)	26 (12)	8
3 (900)	4 (1200)	5'-2" (1.57m)	6'-2" (1.88m)	5(125)	0.41(0.31)	4'-6" (1.37m)	39(991)	29 (13)	10
4 (1200)	3 (900)	6'-2" (1.88m)	5'-2" (1.57m)	5(125)	0.41(0.31)	5'-6" (1.68m)	33(838)	29 (13)	10
4 (1200)	4 (1200)	6'-2" (1.88m)	6'-2" (1.88m)	5(125)	0.45(0.34)	5'-6" (1.68m)	39(991)	32 (14.5)	12
4 (1200)	5 (1500)	6'-4" (1.93m)	7'-4" (2.24m)	6(150)	0.51(0.39)	5'-8" (1.73m)	3'-10" (1.17m)	36 (16)	14
5 (1500)	4 (1200)	7'-4" (2.24m)	6'-4" (1.93m)	6(150)	0.51(0.39)	6'-8" (2.03m)	3'-4" (1.02m)	35 (16)	14
5 (1500)	5 (1500)	7'-4" (2.24m)	7'-4" (2.24m)	6(150)	0.55(0.42)	6'-8" (2.03m)	3'-10" (1.17m)	38 (17)	16
5 (1500)	6 (1800)	7'-6" (2.29m)	8'-6" (2.59m)	7(175)	0.60(0.46)	6'-10" (2.08m)	4'-5" (1.35m)	42 (19)	16
6 (1800)	4 (1200)	8'-6" (2.59m)	6'-6" (1.98m)	7(175)	0.56(0.43)	7'-10" (2.39m)	3'-5" (1.04m)	39 (18)	14
6 (1800)	5 (1500)	8'-6" (2.59m)	7'-6" (2.29m)	7(175)	0.60(0.46)	7'-10" (2.39m)	3'-11" (1.19m)	42 (19)	16
6 (1800)	6 (1800)	8'-6" (2.59m)	8'-6" (2.59m)	7(175)	0.64(0.49)	7'-10" (2.39m)	4'-5" (1.35m)	44.5 (20)	16
6 (1800)	8 (2400)	8'-8" (2.64m)	10'-8" (3.25m)	8(200)	0.74(0.57)	8'-0" (2.44m)	5'-6" (1.68m)	51 (23)	18
8 (2400)	8 (2400)	10'-8" (3.25m)	10'-8" (3.25m)	8(200)	0.82(0.63)	10'-0" (3.05m)	5'-6" (1.68m)	56 (25.5)	20

All dimensions are in inches (millimeters) unless otherwise noted.

QUANTITIES

CALC. BY: _____ DATE: _____
 CHECKED BY: _____ DATE: _____

QUANTITY CALCULATIONS ARE ON FILE AT THE DISTRICT 4 OFFICE, BUREAU OF PROJECT IMPLEMENTATION, DOCUMENTATION SECTION

DATE	REVISIONS	BY
1-1-97	RENUM. J-12.01, METRICS, NEW REVISION BOX, REVISED TITLE BOX, ADDED QUANTITY CALCULATION BOX.	T.P.
10-16-06	REV. TO 2007 SPEC., REINF. BARS COL.	M.A.

ILLINOIS DEPARTMENT OF TRANSPORTATION
DISTRICT CADD STANDARD
COLLAR FOR BOX CULVERT EXTENSIONS
 CADD STANDARD 540001-D4
 SCALE: NOT DRAWN TO SCALE
 DATE _____ DRAWN BY CADD
 CHECKED BY _____