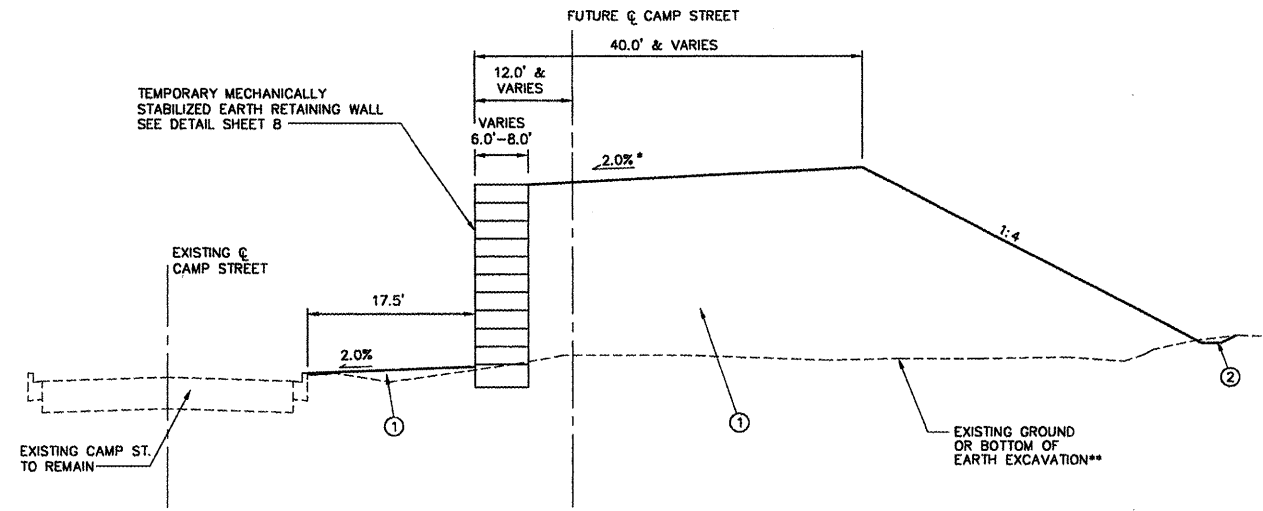


F.A.M. RTE.	SECTION	COUNTY	TOTAL SHEETS	SHEET NO.
6713	06-00139-00-GE	TAZEWELL	13	4
STA. _____		TO STA. _____		
PROJECT: HP 0750013 ILLINOIS CITY OF EAST PEORIA				



**PROPOSED TYPICAL SECTION - CAMP STREET**

SCALE: N.T.S.

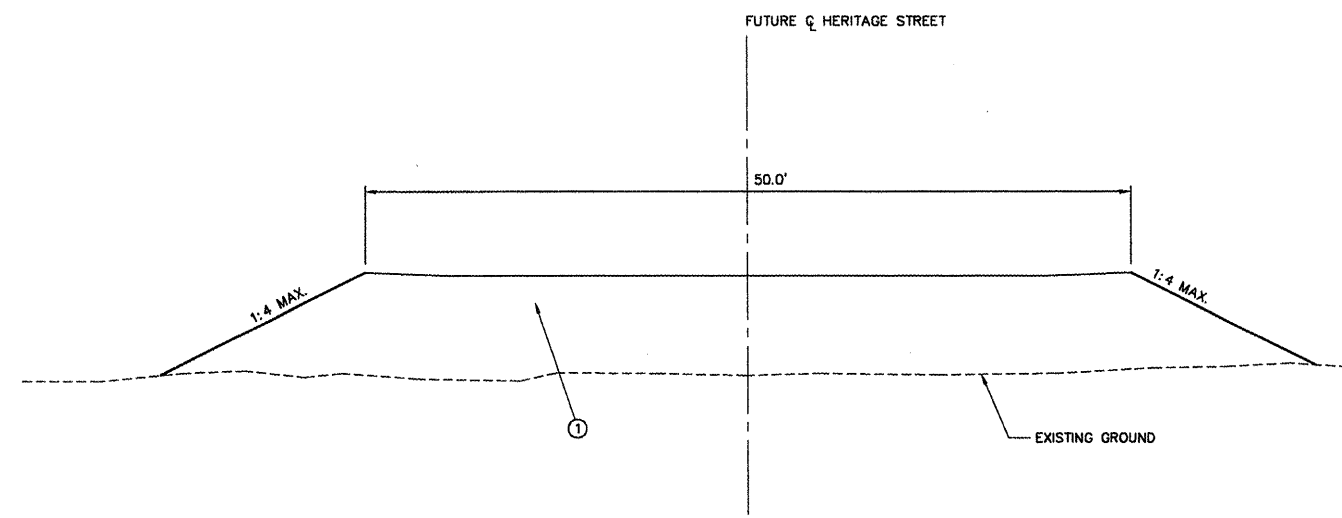
SEE CROSS SECTIONS AND DETAIL SHEETS FOR MORE INFORMATION  
SEE LAYOUT AND GRADING SHEETS FOR MORE INFORMATION

\* SEE LAYOUT AND GRADING PLANS AT INTERSECTION STATION 141+50 TO 143+00

\*\* EARTH EXCAVATION REQUIRED AT STA. 141+00 TO 143+00 - SEE CROSS SECTIONS FOR ADDITIONAL INFORMATION

**LEGEND**

- ① FURNISHED EXCAVATION
- ② EARTH EXCAVATION



**PROPOSED TYPICAL SECTION - HERITAGE STREET**

SCALE: N.T.S.

SEE CROSS SECTIONS AND DETAIL SHEETS FOR MORE INFORMATION

**LEGEND**

- ① FURNISHED EXCAVATION

PLOT DATE = 04/27/09  
 PLOT SCALE = AS SHOWN  
 USER NAME = MUSER


**STS CONSULTANTS**  
 111 NE Jefferson Ave.  
 Peoria, Illinois 61602  
 PH: (309) 676-0464  
 FAX: (309) 676-5445  
 IL Design Firm Reg. No. 184-001518

REVISIONS	
NAME	DATE

ILLINOIS DEPARTMENT OF TRANSPORTATION  
**CAMP STREET FILL**  
  
**TYPICAL SECTIONS  
 CAMP STREET AND  
 HERITAGE STREET**  
  
 SCALE: \_\_\_\_\_  
 DATE: 1-5-2009  
 DRAWN BY: MLB/MEW  
 CHECKED BY: DOB