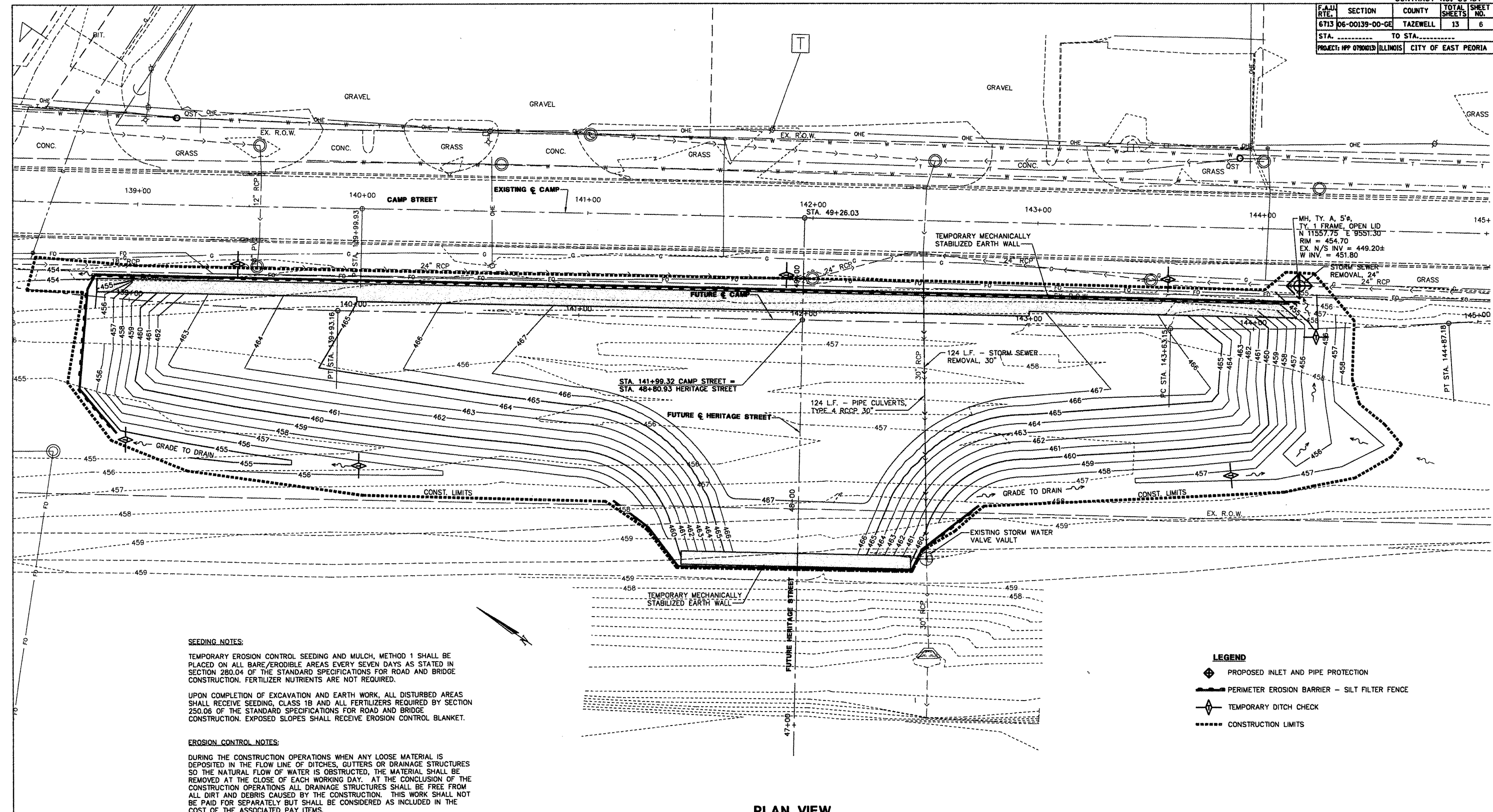


CONTRACT NO. 89457

F.A.U. RTE.	SECTION	COUNTY	TOTAL SHEETS	SHEET NO.
6713	06-00139-00-GE	TAZEWELL	13	6
STA. _____ TO STA. _____		PROJECT: HPP 0790013 ILLINOIS CITY OF EAST PEORIA		



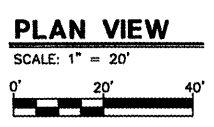
SEEDING NOTES:
 TEMPORARY EROSION CONTROL SEEDING AND MULCH, METHOD 1 SHALL BE PLACED ON ALL BARE/ERODIBLE AREAS EVERY SEVEN DAYS AS STATED IN SECTION 280.04 OF THE STANDARD SPECIFICATIONS FOR ROAD AND BRIDGE CONSTRUCTION. FERTILIZER NUTRIENTS ARE NOT REQUIRED.

UPON COMPLETION OF EXCAVATION AND EARTH WORK, ALL DISTURBED AREAS SHALL RECEIVE SEEDING, CLASS 1B AND ALL FERTILIZERS REQUIRED BY SECTION 250.06 OF THE STANDARD SPECIFICATIONS FOR ROAD AND BRIDGE CONSTRUCTION. EXPOSED SLOPES SHALL RECEIVE EROSION CONTROL BLANKET.

EROSION CONTROL NOTES:
 DURING THE CONSTRUCTION OPERATIONS WHEN ANY LOOSE MATERIAL IS DEPOSITED IN THE FLOW LINE OF DITCHES, GUTTERS OR DRAINAGE STRUCTURES SO THE NATURAL FLOW OF WATER IS OBSTRUCTED, THE MATERIAL SHALL BE REMOVED AT THE CLOSE OF EACH WORKING DAY. AT THE CONCLUSION OF THE CONSTRUCTION OPERATIONS ALL DRAINAGE STRUCTURES SHALL BE FREE FROM ALL DIRT AND DEBRIS CAUSED BY THE CONSTRUCTION. THIS WORK SHALL NOT BE PAID FOR SEPARATELY BUT SHALL BE CONSIDERED AS INCLUDED IN THE COST OF THE ASSOCIATED PAY ITEMS.

REFER TO THE STORM WATER POLLUTION PREVENTION PLAN FOR ADDITIONAL INFORMATION AND REQUIREMENTS.

- LEGEND**
- PROPOSED INLET AND PIPE PROTECTION
 - PERIMETER EROSION BARRIER - SILT FILTER FENCE
 - TEMPORARY DITCH CHECK
 - CONSTRUCTION LIMITS



REVISIONS	
NAME	DATE

ILLINOIS DEPARTMENT OF TRANSPORTATION
CAMP STREET FILL
EROSION CONTROL AND UTILITY PLAN

SCALE: 1" = 20'
 DATE: 1-5-2009

DRAWN BY: MLB/MEW
 CHECKED BY: DOB

STS CONSULTANTS
 111 NE Jefferson Ave.
 Peoria, Illinois 61602
 PH: (309) 678-8484
 FAX: (309) 678-5445
 IL Design Firm Reg. No. 184-001518

DATE: 1-5-2009
 FILE NAME: 06-00139-00-GE-06-01
 PLOT SCALE: 1" = 20'
 USER NAME: USER1