

STATE OF ILLINOIS
 DEPARTMENT OF TRANSPORTATION
 DIVISION OF HIGHWAYS

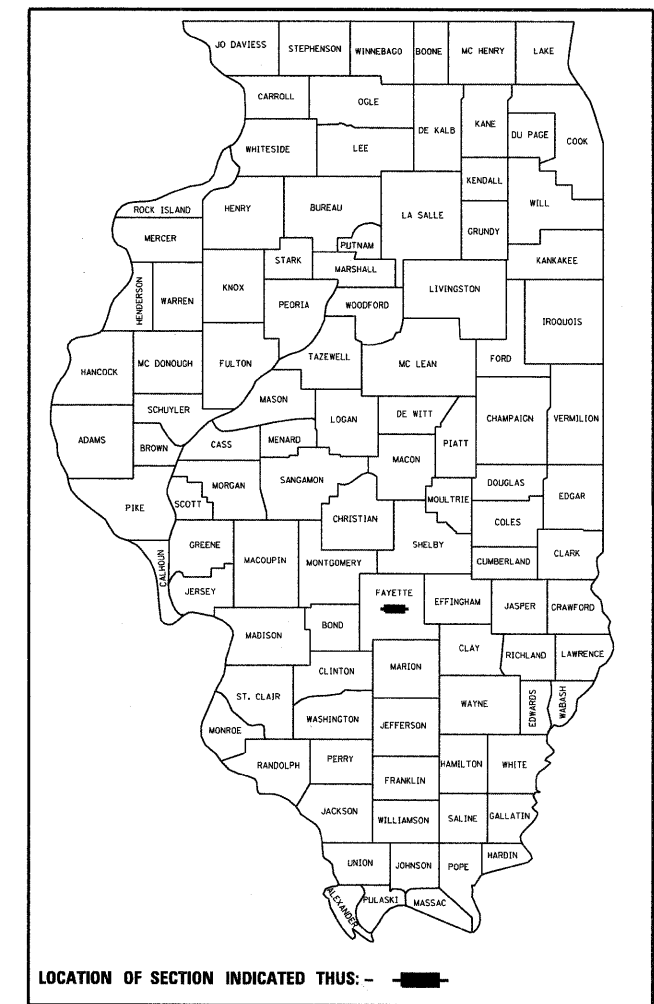
**PROPOSED
 HIGHWAY PLANS**

F.A.I. ROUTE 70 (I-70)
 SECTION D-7 BRIDGE DECK REPAIRS
 PROJECT: IM-070-2(230)059
 FAYETTE COUNTY
 C-97-041-03

F.A.I. RTE.	SECTION	COUNTY	TOTAL SHEETS	SHEET NO.
70		FAYETTE	59	1
FED. ROAD DIST. NO.	ILLINOIS	CONTRACT NO. 94993		

D-7 BRIDGE DECK REPAIRS

D-97-028-03



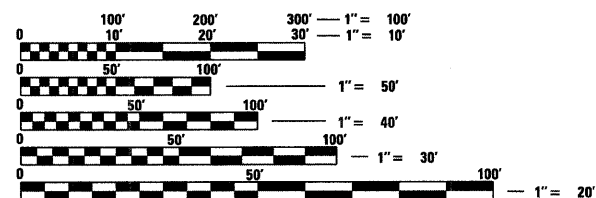
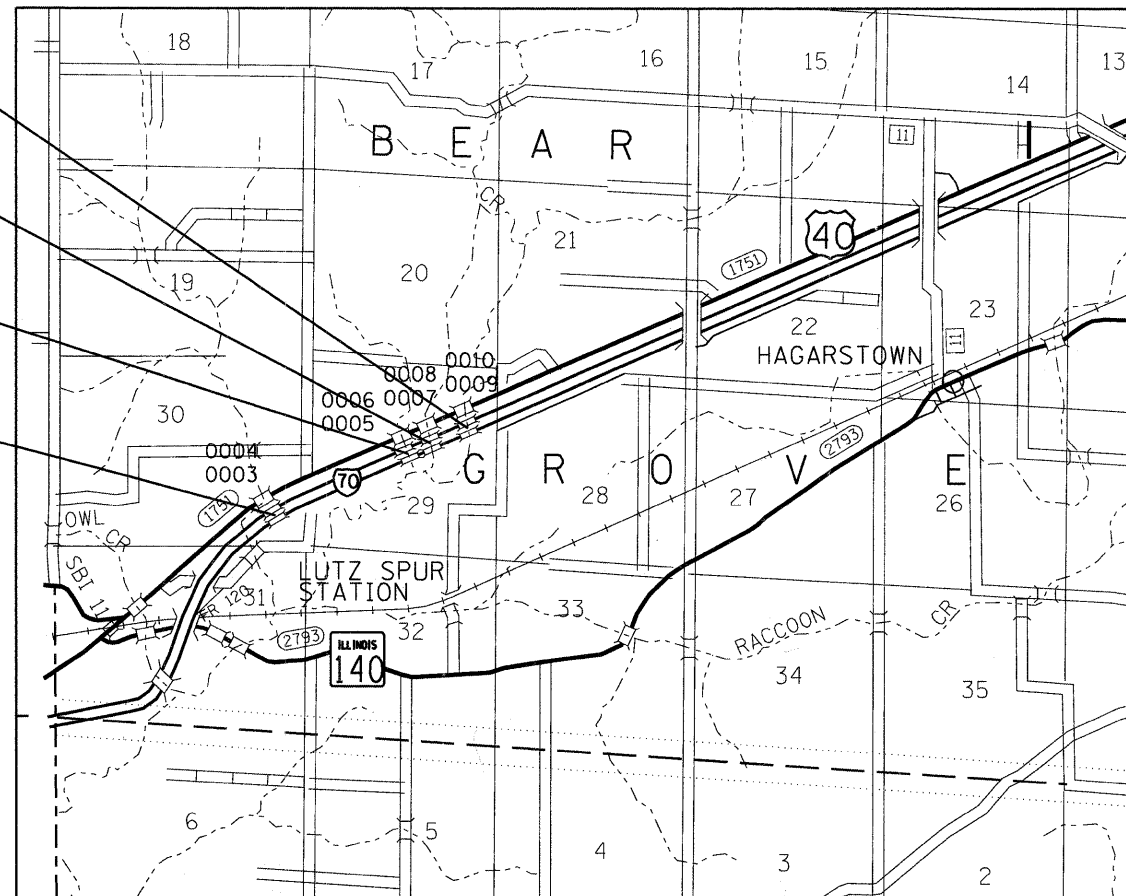
LOCATION OF SECTION INDICATED THIS: - [black rectangle] -

FOR INDEX OF SHEETS, SEE SHEET NO. 2

STATION EQUATION:
 1610 + 33.67 (BK) = STA. 90 + 55.19 (AH)

2007 ADT: 21,100 (46% TRUCKS)

- STR. NOS:
026-0009 & 026-0010
- STR. NOS.:
026-0007 & 026-0008
- STR. NOS.:
026-0005 & 026-0006
- STR. NOS.:
026-0003 & 026-0004



FULL SIZE PLANS HAVE BEEN PREPARED USING STANDARD ENGINEERING SCALES. REDUCED SIZED PLANS WILL NOT CONFORM TO STANDARD SCALES. IN MAKING MEASUREMENTS ON REDUCED PLANS, THE ABOVE SCALES MAY BE USED.

J.U.L.I.E.
 JOINT UTILITY LOCATION INFORMATION FOR EXCAVATION
 1-800-892-0123
 OR 811

PROJECT ENGINEER: MIKE ALLEN
 PROJECT MANAGER: KAREN THOELE
 GROVE TOWNSHIP
 CONTRACT NO 94993

GROSS LENGTH = 7081 FEET = 1.34 MILE
 NET LENGTH = 7081 FEET = 1.34 MILE

STATE OF ILLINOIS
 DEPARTMENT OF TRANSPORTATION
 DIVISION OF HIGHWAYS

SUBMITTED October 17, 2008

Raymond L. Dickel
 DEPUTY DIRECTOR OF HIGHWAYS, REGION ENGINEER

December 5, 2008
Eric E. Harnett
 INTERIM ENGINEER OF DESIGN AND ENVIRONMENT

December 5, 2008
Christine M. Reed
 DIRECTOR OF HIGHWAYS, CHIEF ENGINEER

**PRINTED BY THE AUTHORITY
 OF THE STATE OF ILLINOIS**