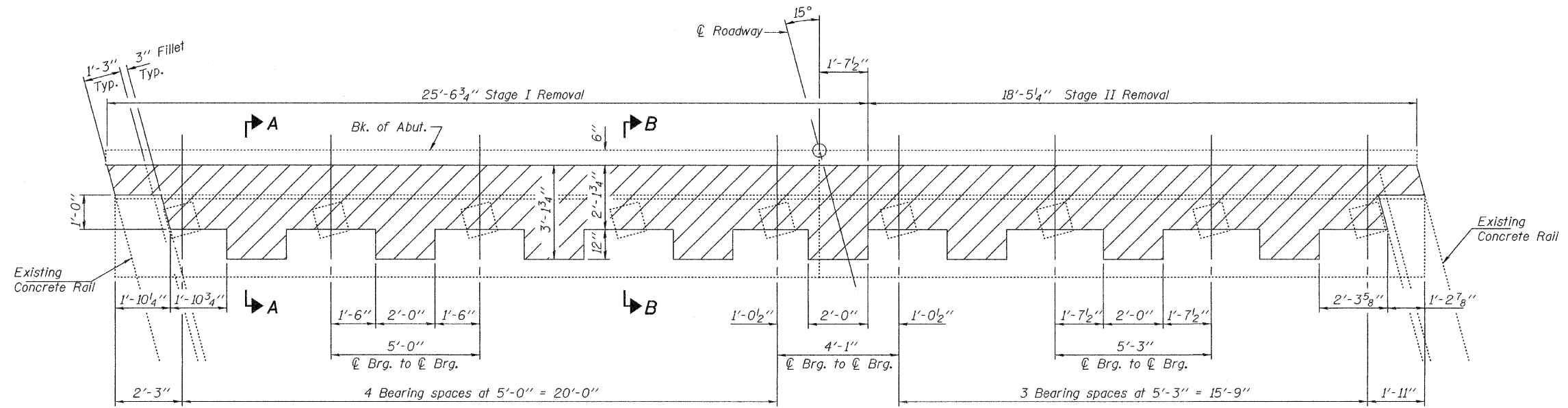


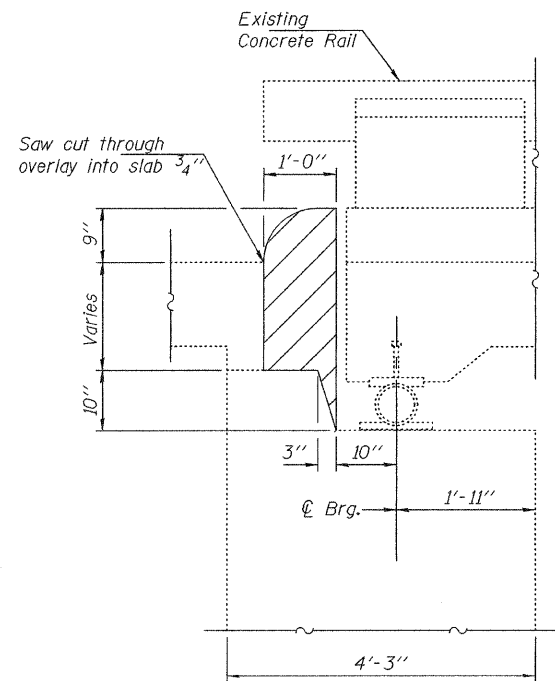
STATE OF ILLINOIS
DEPARTMENT OF TRANSPORTATION



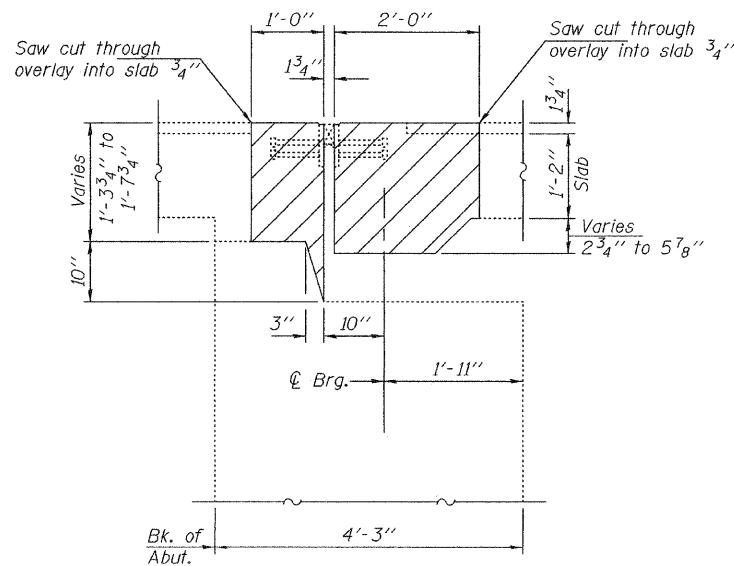
TYPICAL ABUTMENT PLAN

Wing Walls not shown for clarity.
026-0003 W. Abut., 026-0004 E. Abut. shown
026-0003 E. Abut., 026-0004 W. Abut. similar by 180° rotation

Note:
Hatched areas indicate Concrete Removal.

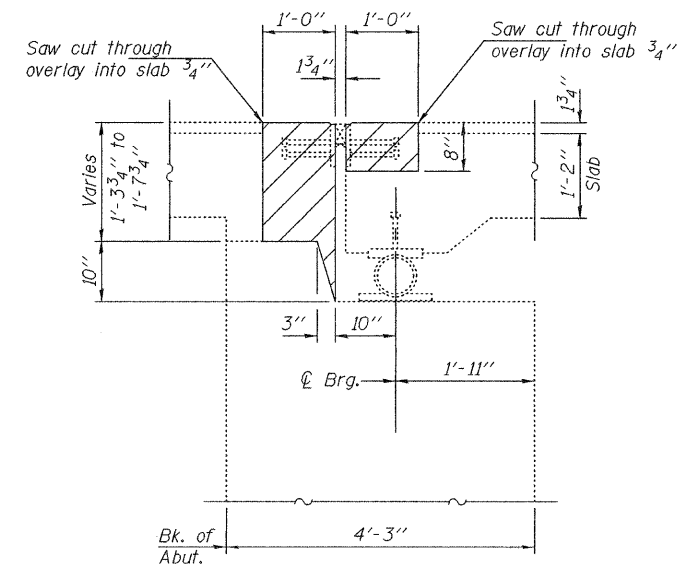


TYPICAL CURB VIEW



SECTION A-A

Horiz. Dim. at Rt. L's



SECTION B-B

Horiz. Dim. at Rt. L's

DESIGNED	AJB
CHECKED	GGE
DRAWN	Kyle M. Steffen
CHECKED	AJB GGE

NOVEMBER 21, 2008

EXAMINED *Carl Krueger*
ENGINEER OF STRUCTURAL SERVICES

PASSED *Ralph E. Anderson*
ENGINEER OF BRIDGES AND STRUCTURES

REPAIR DETAILS
F.A.I. RTE. 70 OVER LICK CREEK
SN 026-0003 (EB) & 0004 (WB)

SHEET NO. 3	F.A.I. RTE.	SECTION	COUNTY	TOTAL SHEETS	SHEET NO.
	70	-	FAYETTE	59	18
8 SHEETS	CONTRACT NO. 94993				
FED. ROAD DIST. NO.		ILLINOIS	FED. AID PROJECT		