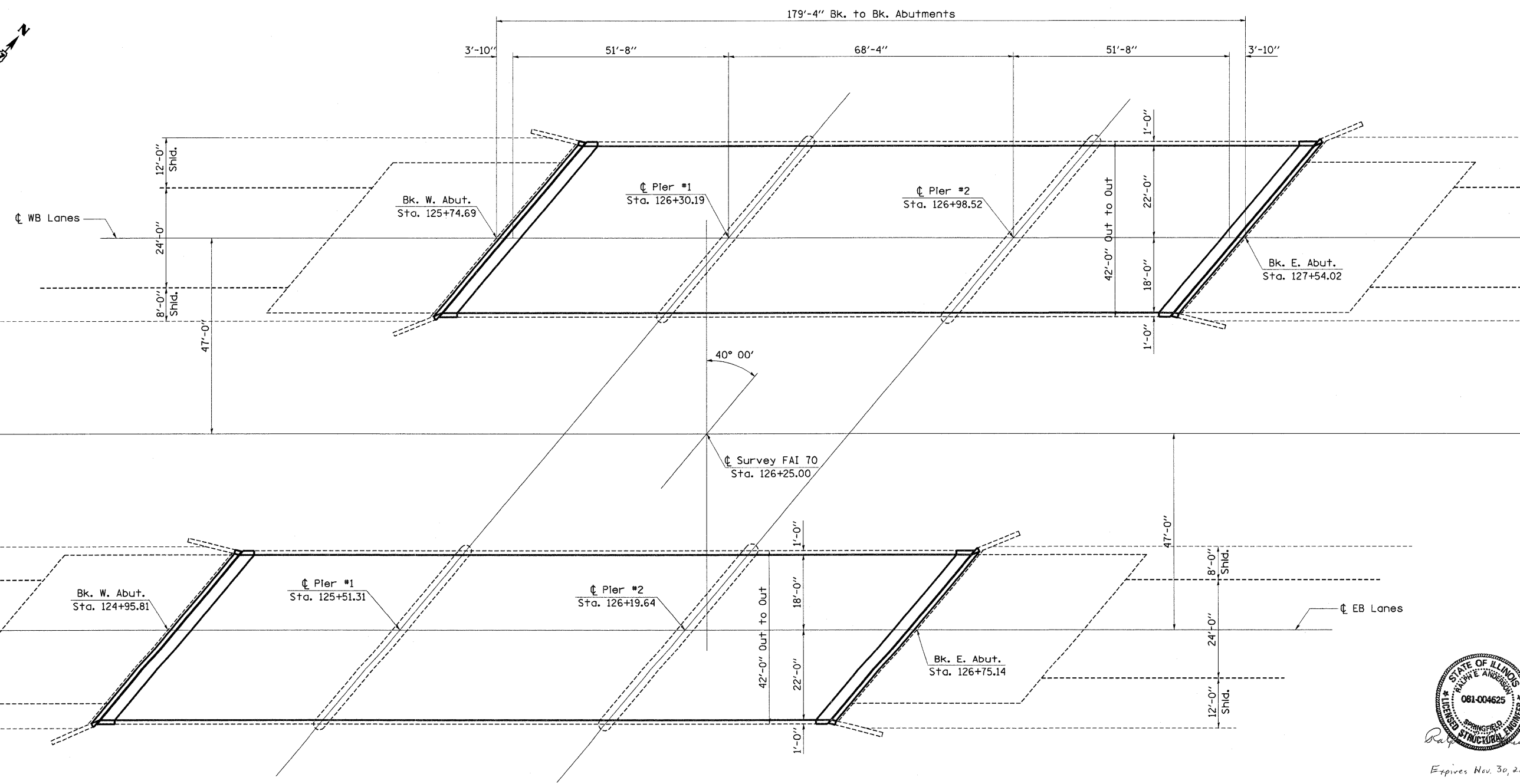
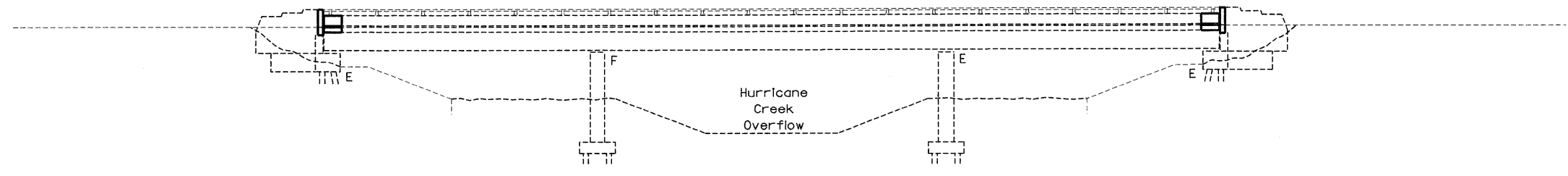


The existing 3 span precast prestressed I-beam structures were constructed in 1965 as section 26-08-2 at Sta. 126+25. SN 026-0007 carries FAI-70 eastbound and SN 026-0008 carries FAI-70 westbound. The proposed project consists of new expansion joints, partial and full depth deck patching, new microsilica wearing surface, and new deck drains.



Expires Nov. 30, 2010

FILE NAME =	USER NAME = swartzw	DESIGNED -	REVISED -
ca:\work\p\1001\SWARTZRW\dms36208\theledesign_94993.dgn		DRAWN -	REVISED -
		CHECKED -	REVISED -

STATE OF ILLINOIS  
DEPARTMENT OF TRANSPORTATION

GENERAL PLAN & ELEVATION  
SN. 026-0007 (EB) & SN. 026-0008 (WB)

F.A.I. RTE.	SECTION	COUNTY	TOTAL SHEETS	SHEET NO.
70	D-7 BRIDGE DECK REPAIRS	FAYETTE	59	35

SHEET NO. 2  
12 SHEETS