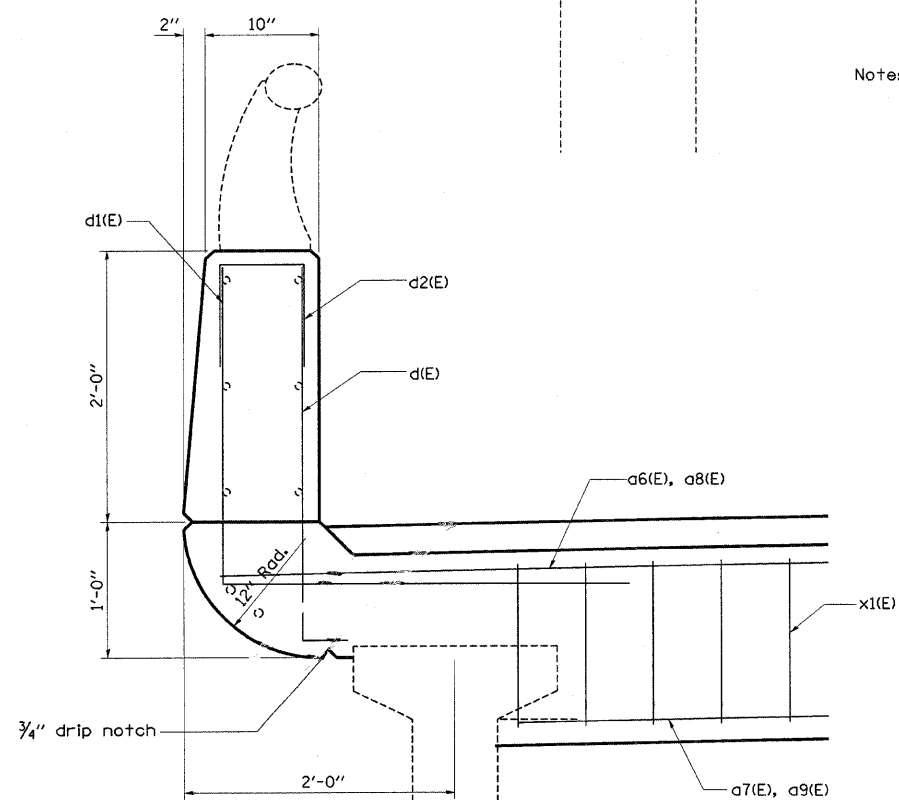
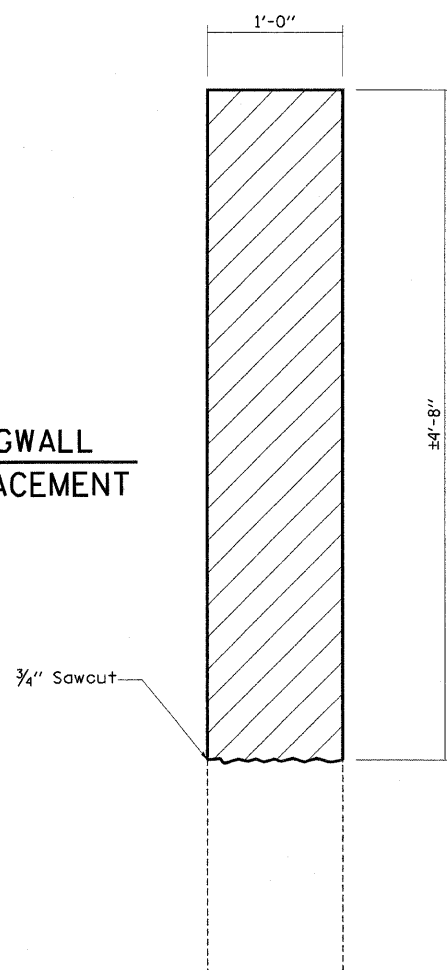
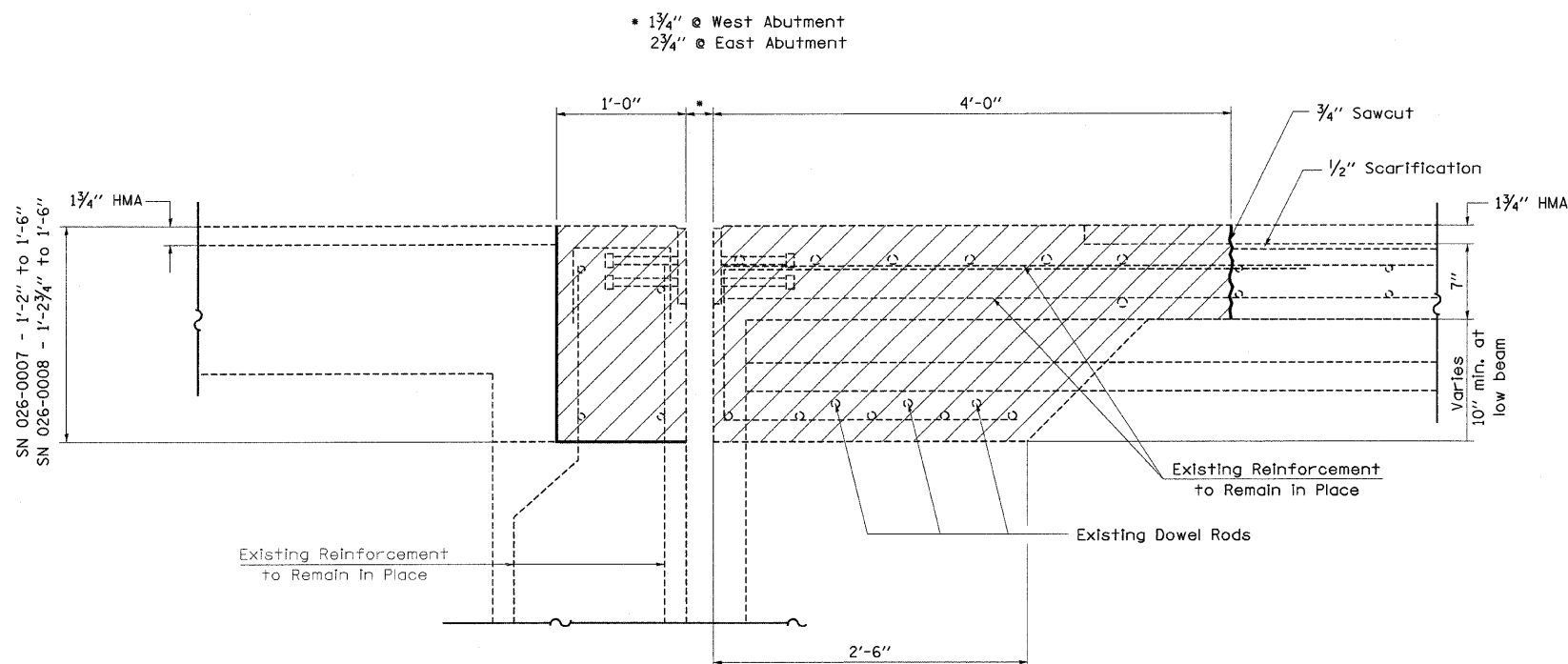


**TYPICAL WINGWALL  
REMOVAL/REPLACEMENT**



**SECTION THRU PARAPET**

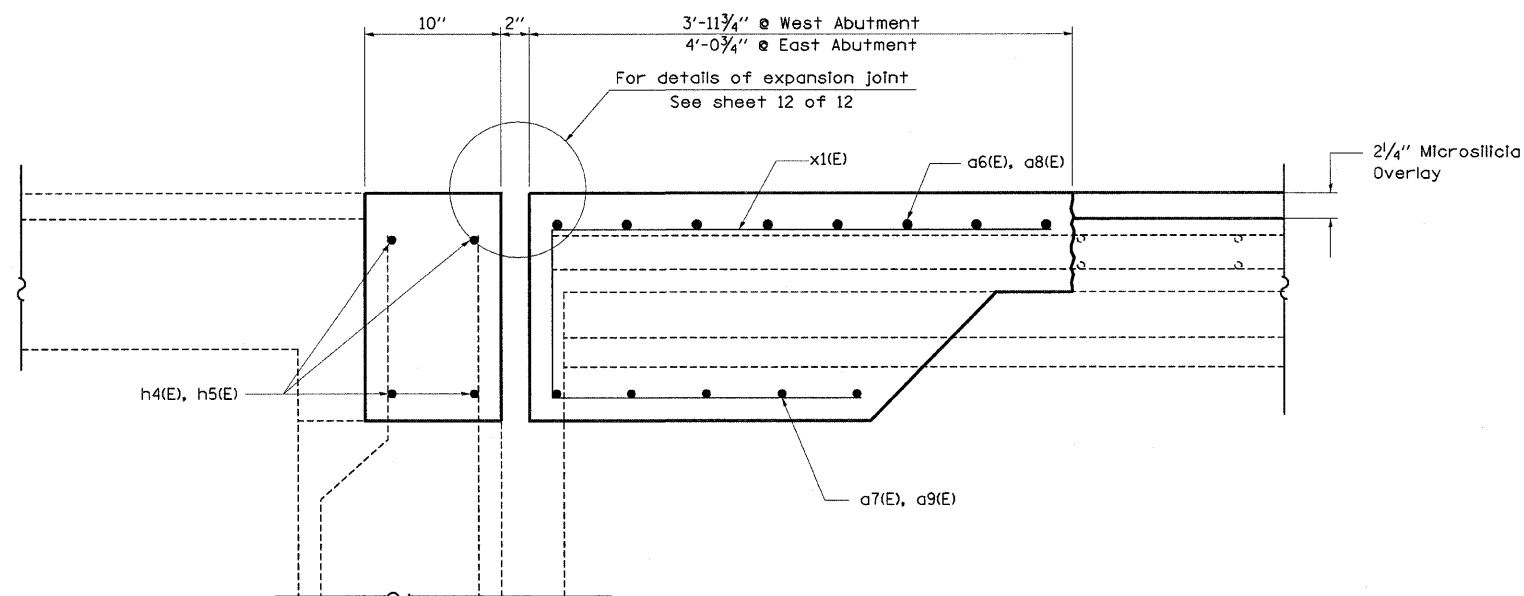
Note: Dimensions are based on a Rolled Roll Strip Seal Joint. If the Contractor elects to use the Welded Roll Strip Seal Joint, deck dimensions may require adjustments to satisfy the details on Base Sheet EJ-SSJ.



**SECTION A-A**

(Dimensions at RT L's to end of deck)

- Existing Reinforcement
- Proposed Reinforcement



**SECTION B-B**

(Dimensions at RT L's to end of deck)

FILE NAME =	USER NAME = swartzw	DESIGNED -	REVISED -
ca:\pvt\work\PW\DOT\SWARTZRW\dms36288\thel	elredesign\94993.dgn	DRAWN -	REVISED -
PLOT SCALE = 20,0000 ' / IN.		CHECKED -	REVISED -
PLOT DATE = 10/17/2008		DATE -	REVISED -

**STATE OF ILLINOIS  
DEPARTMENT OF TRANSPORTATION**

**EXPANSION JOINT REPLACEMENT DETAILS  
SN 026-0007 (EB) & SN 026-0008 (WB)**

F.A.I. RTE.	SECTION	COUNTY	TOTAL SHEETS	SHEET NO.
70	D-7 BRIDGE DECK REPAIRS	FAYETTE	59	38
FED. ROAD DIST. NO.			ILLINOIS FED. AID PROJECT	
			CONTRACT NO. 94993	