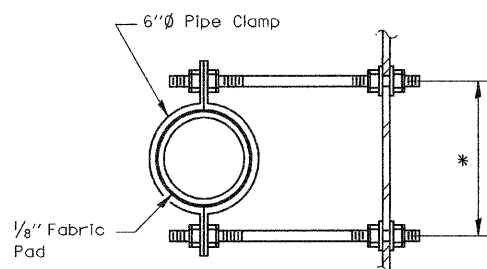
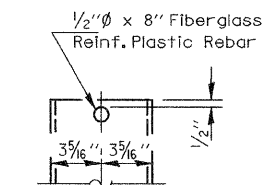


* Dimension as required by Pipe Clamp

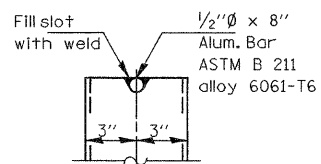


SECTION A-A

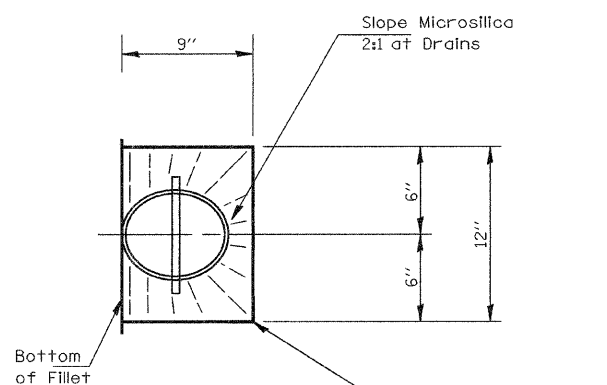


FIBERGLASS PIPE

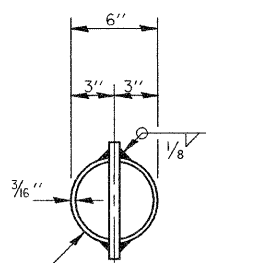
* Dimensions shall be determined by the Engineer in the field based on extent of deck deterioration at each drain.



ALUMINUM TUBE

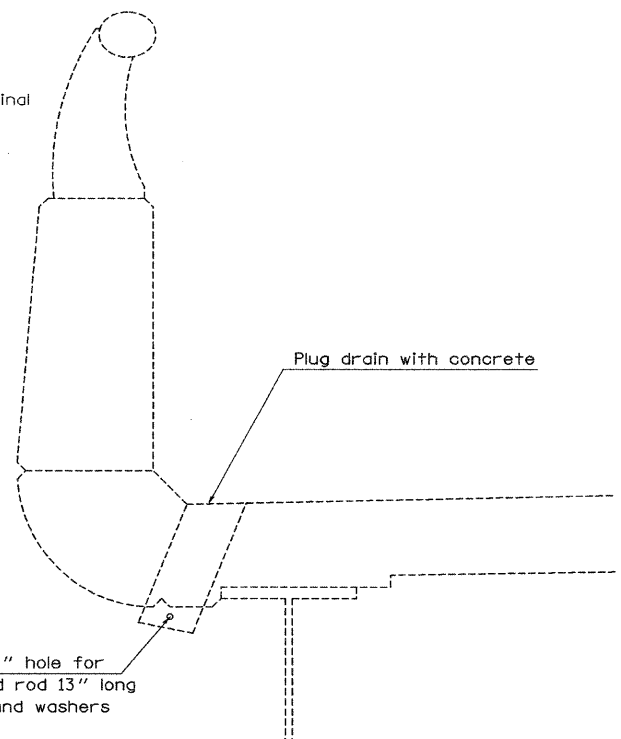


TOP PLAN



TOP PLAN

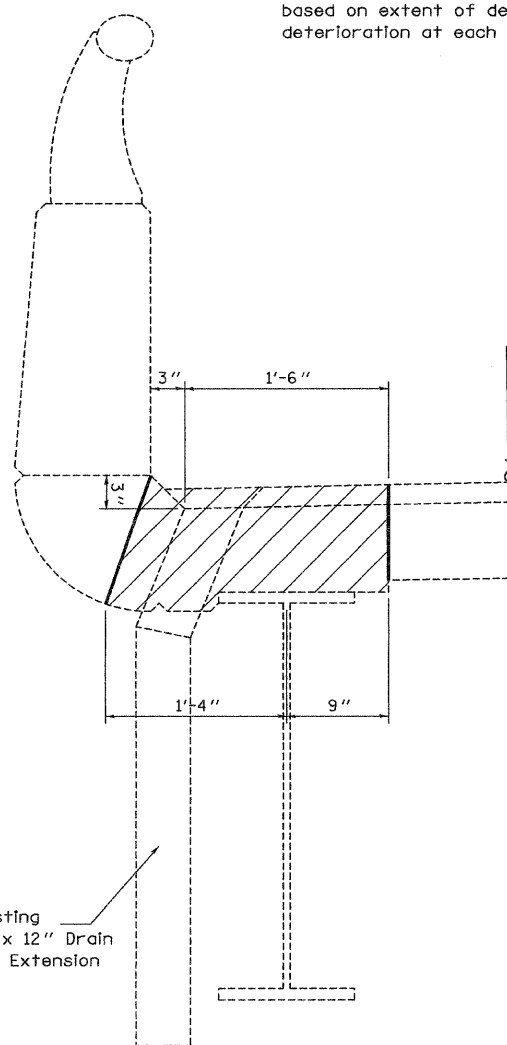
(Showing Aluminum Tube)



DRAINS TO BE PLUGGED DETAIL

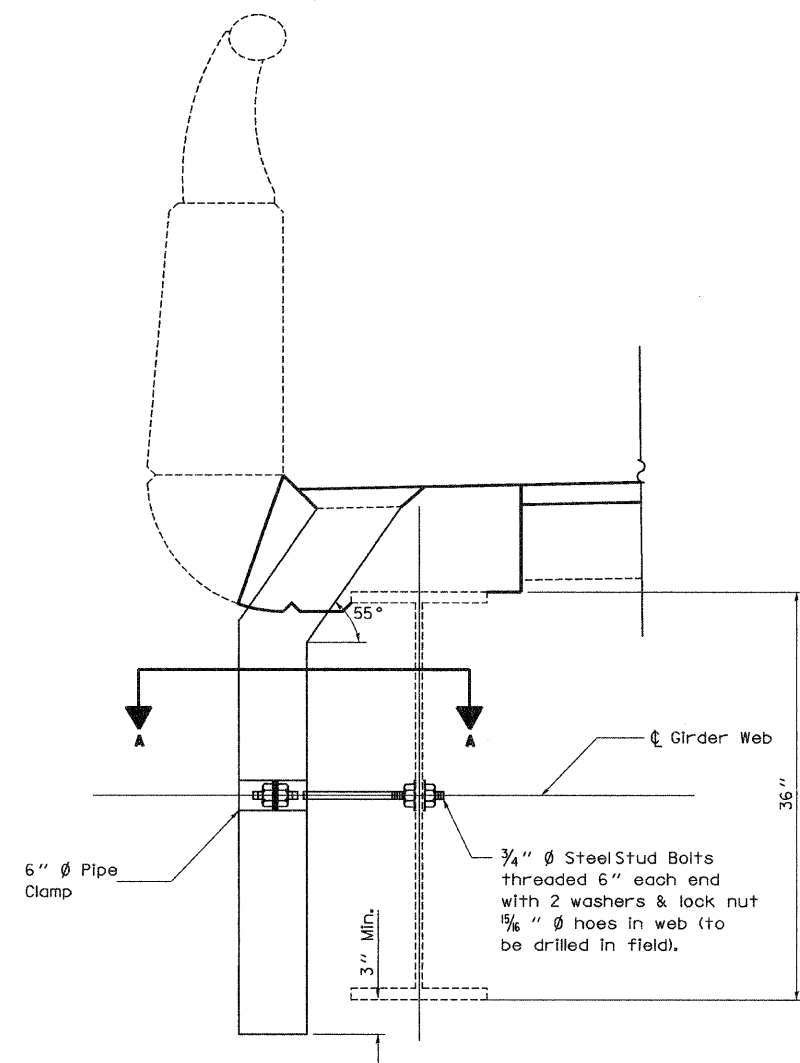
Note: See "Existing Deck Drains to Be Plugged" plan sheets for Plug Existing Deck Drains locations. See "Total Bill of Materials" for each structure for quantities.

Note: Fiberglass pipe shall conform to ASTM D 2996, with short-time rupture strength hoop tensile stress of 30,000 p.s.i. minimum.



SECTION THRU EXISTING FLOOR DRAIN

Hatched area indicates concrete removal at floor drain replacement.



DRAIN REPLACEMENT DETAIL

Note: See "Bridge Deck Patching" plan sheets for Floor Drain replacement locations. See "Total Bill of Materials" for each structure for quantities.

FILE NAME =	USER NAME = #USER#	DESIGNED -	REVISED -
#FILE#		DRAWN -	REVISED -
	PLOT SCALE = #SCALE#	CHECKED -	REVISED -
	PLOT DATE = #DATE#	DATE -	REVISED -

STATE OF ILLINOIS
DEPARTMENT OF TRANSPORTATION

FLOOR DRAIN DETAIL
SN. 026-0009 & SN. 026-0010

SCALE: N/A SHEET NO. 9 OF 14 SHEETS STA. TO STA.

F.A.I. RTE.	SECTION	COUNTY	TOTAL SHEETS	SHEET NO.
70	D-7 BRIDGE DECK REPAIRS	FAYETTE	59	54
FED. ROAD DIST. NO.			ILLINOIS FED. AID PROJECT	
			CONTRACT NO. 94993	

SHEET NO. 9
14 SHEETS