

F.A.S.	SECTION	COUNTY	TOTAL SHEETS	SHEET NO.
1819	06-00074-00-RS	WABASH	2	1
FED. ROAD DIST. NO. 7		ILLINOIS	GOODSON ORCHARD ROAD	
LEC JOB # H061005WB			CONTRACT # 95549	

STATE OF ILLINOIS
DEPARTMENT OF TRANSPORTATION
DIVISION OF HIGHWAYS

PLANS FOR PROPOSED
FEDERAL-AID SECONDARY PROJECT

F.A.S. 1819 SECTION 06-00074-00-RS WABASH COUNTY

PROJECT RS-1819(106) JOB NO. C-97-066-08

INDEX OF SHEETS

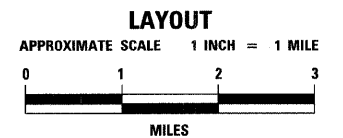
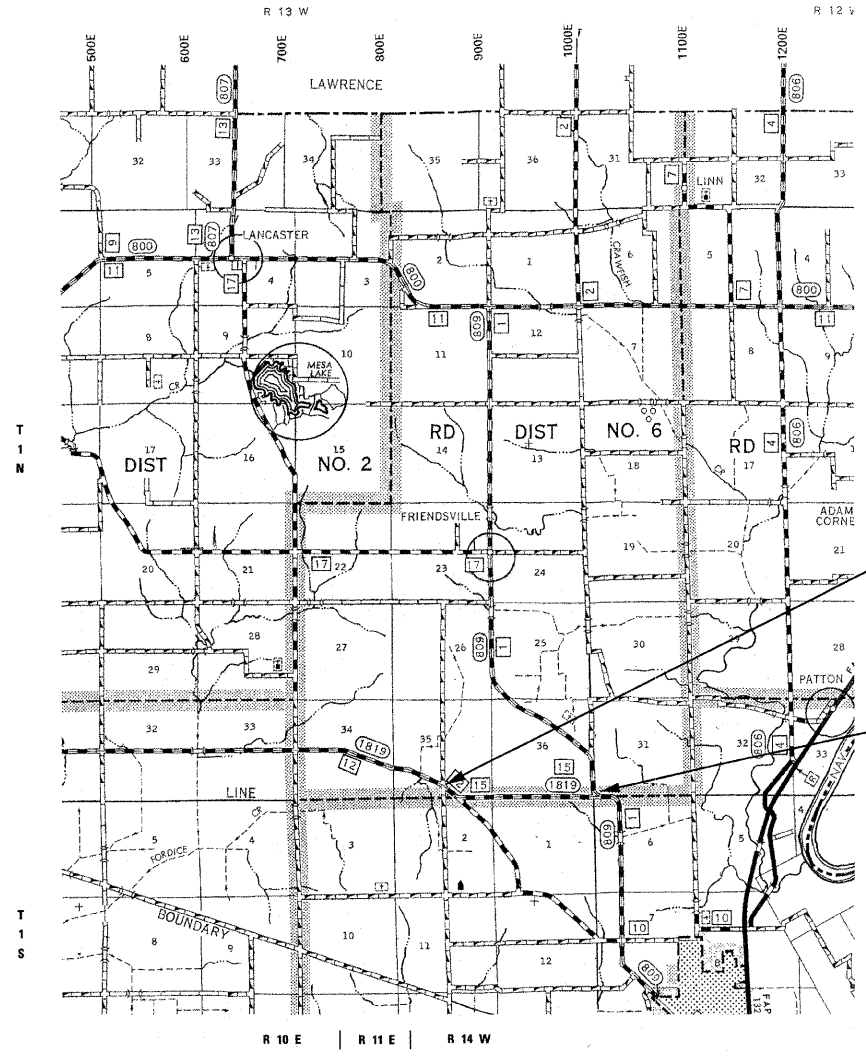
SHEET NO.	DESCRIPTION
1	TITLE SHEET
2	TYPICAL SECTIONS, SUMMARY OF QUANTITIES, GENERAL NOTES, MISCELLANEOUS DETAILS

THE FOLLOWING STANDARDS ARE A PART OF THESE PLANS AND ARE INCLUDED AFTER SHEET NO. 2

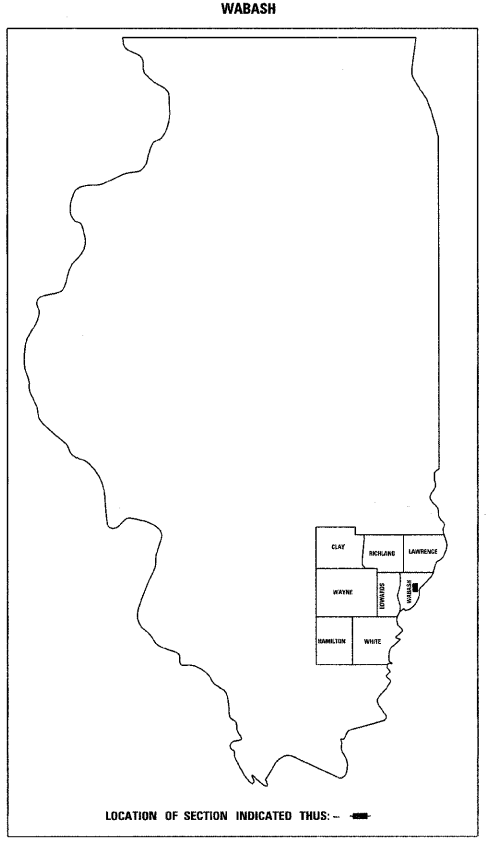
000001-05	STANDARD SYMBOLS, ABBREVIATIONS & PATTERNS
701306-02	LANE CLOSURE, 2L, 2W, SLOW MOVING OPERATIONS DAY ONLY, FOR SPEEDS ≥ 45 MPH
701311-03	LANE CLOSURE 2L, 2W MOVING OPERATIONS-DAY ONLY
701901-01	TRAFFIC CONTROL DEVICES
780001-02	TYPICAL PAVEMENT MARKINGS

CONTRACT NO. 95549
DESIGN CLASS - MAJOR COLLECTOR
CURRENT A.D.T. = 1000
DESIGN SPEED = 50 MPH

J.U.L.I.E.
JOINT UTILITY LOCATION INFORMATION FOR EXCAVATION
1-800-892-0123



GROSS LENGTH	8,833 FT	1.6729 MILES
OMISSION	0 FT	0 MILES
NET LENGTH	8,833 FT	1.6729 MILES



323 W. 3RD ST.
P.O. BOX 160
MT. CARMEL, IL
62863
PHONE: (618)-262-8651
FAX: (618)-263-3327

405 W. STATE ST.
SUITE 1
PRINCETON, IN
47670
PHONE: (812)-386-7611
FAX: (812)-385-2612



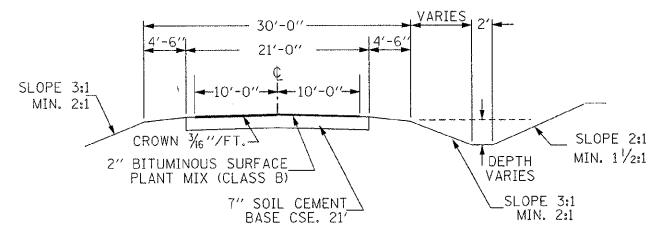
PROFESSIONAL
DESIGN FIRM
LAND SURVEY &
ENGINEERING
CORPORATION
184-000887
(62-032435)(35-002769)



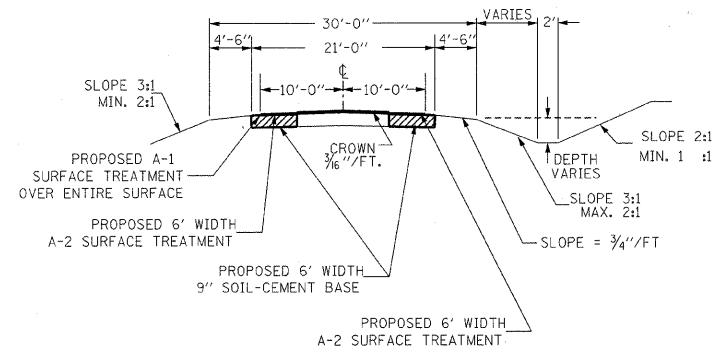
AARON M. MEFFORD
NAME
Aaron M. Mefford
SIGNATURE
12-08-08
DATE
11-30-09
EXPIRES

APPROVED	<i>12-08</i>	20 08
	<i>Aaron M. Mefford</i>	COUNTY ENGINEER
PASSED	<i>1-7</i>	20 09
	<i>Maureen Cantel</i>	DISTRICT SEVEN ENGINEER OF LOCAL ROADS & STREETS
Releasing For Bid Based on Limited Review	<i>1-7</i>	20 09
	<i>Roger R. Bushnell</i>	DEPUTY DIRECTOR OF HIGHWAYS, REGION FOUR ENGINEER
STATE OF ILLINOIS DEPARTMENT OF TRANSPORTATION		

**TYPICAL CROSS SECTION
EXISTING**



**TYPICAL CROSS SECTION
PROPOSED**



GENERAL NOTES:

THIS SECTION CONSISTS OF PAVEMENT REMOVAL, AN A-2 BITUMINOUS SURFACE TREATMENT ON A 9" SOIL-CEMENT BASE, AND OTHER MISCELLANEOUS ITEMS NECESSARY TO COMPLETE THE PROJECT, ALL IN ACCORDANCE WITH THE PLANS, SPECIAL PROVISIONS AND "STANDARD SPECIFICATIONS FOR ROAD AND BRIDGE CONSTRUCTION" ADOPTED JANUARY 1, 2007.

THE EXISTING GRADE, ALIGNMENT, DRAINAGE STRUCTURES, BASE AND SURFACE WERE CONSTRUCTED UNDER SECTIONS 33-10 AND 33-20, 89-00054-00-RS AND SHALL REMAIN IN PLACE. ALL STATIONS REFERRED TO IN THE PLANS AND PROPOSAL ARE REFERENCED TO THE ABOVE MENTIONED SECTIONS.

MAXIMUM PERCENT OF GRADE	-5.785 %
MINIMUM STOPPING SIGHT DISTANCE	525 FT
DESIGN SPEED	50 MPH
CURRENT ADT	1000 VPD
DESIGN ADT (20 YEAR)	1250 VPD

THE QUANTITY SHOWN IN THE SUMMARY OF QUANTITIES FOR PROCESSING SOIL-CEMENT BASE COURSE 9" ALLOWS 135 SQ YD FOR SIDEROAD AND 12,893 SQ YD FOR MAIN LINE.

FOR THE A-2 SURFACE TREATMENT OF THE SIDEROAD 302.5 GALLONS ARE ALLOWED FOR BITUMINOUS MATERIALS (PRIME COAT), 2420 GALLONS ARE ALLOWED FOR BITUMINOUS MATERIALS (COVER & SEAL COAT), 30 TONS ARE ALLOWED FOR COVER COAT AGGREGATE AND 15 TONS ARE ALLOWED FOR SEAL COAT AGGREGATE.

THE FOLLOWING RATES HAVE BEEN USED TO CALCULATE PLAN QUANTITIES:

BITUMINOUS MATERIALS (PRIME COAT)	0.25 GAL / SQ YD
BITUMINOUS MATERIALS (COVER COAT)	0.50 GAL / SQ YD
BITUMINOUS MATERIALS (SEAL COAT)	0.50 GAL / SQ YD
COVER COAT AGGREGATE	25 LBS / SQ YD
SEAL COAT AGGREGATE	25 LBS / SQ YD

SUMMARY OF QUANTITIES

QUANTITY	UNIT	ITEM	CODE NUMBER
12893.00	SQ YD	PROCESSING SOIL-CEMENT BASE COURSE 9"	35200400
6020.00	100 WT	CEMENT	35200500
3247.00	GAL	BITUMINOUS MATERIALS (PRIME COAT)	40300100
24503.00	GAL	BITUMINOUS MATERIALS (COVER AND SEAL COATS)	40300300
325.00	TON	COVER COAT AGGREGATE	40300500
273.00	TON	SEAL COAT AGGREGATE	40300600
1.00	L SUM	MOBILIZATION	67100100
29073	FOOT	PAINT PAVEMENT MARKING-LINE 4"	78001110 *

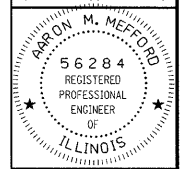
* SPECIALTY ITEMS

323 W. 3RD ST.
P.O. BOX 160
MT. CARMEL, IL
62863
PHONE:
(618)-262-8651
FAX:
(618)-263-3327

405 W. STATE ST.
SUITE 1
PRINCETON, IN
47670
PHONE:
(812)-386-7611
FAX:
(812)-385-2812

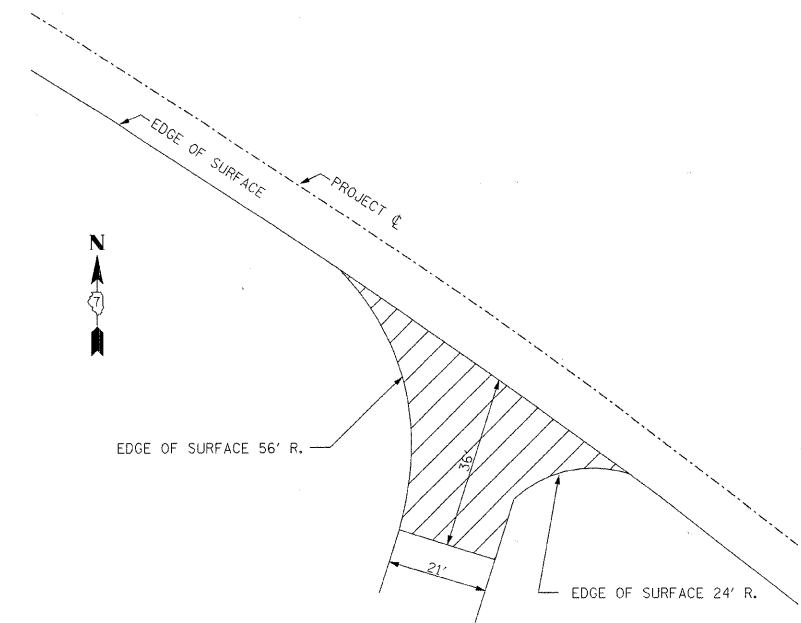


PROFESSIONAL DESIGN FIRM
LAND SURVEY &
PROFESSIONAL
ENGINEERING
CORPORATION
184-000887
(62-032435)(35-002769)



AARON M. MEFFORD
NAME
Aaron Mefford
SIGNATURE
12-08-08
DATE
11-30-09
EXPIRES

SIDE ROAD - STA 84+83 RIGHT

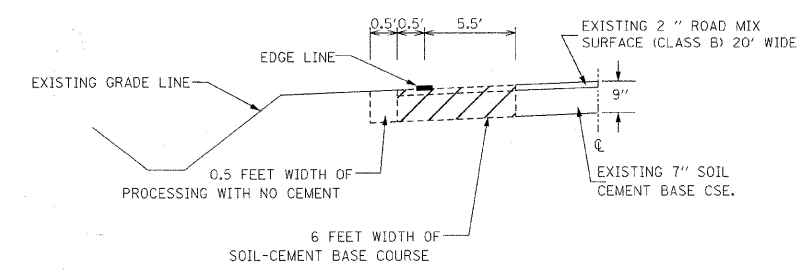


SCHEDULE OF PAVEMENT MARKINGS

STATION	TO	STATION	LOCATION	LENGTH - FOOT
83+00		171+33	CENTERLINE	1465
			EDGE LINE	
83+00		84+70	RT.	170
85+15		94+90	RT.	975
95+40		171+33	RT.	7593
			EDGE LINE	
83+00		84+00	LT.	100
84+75		171+33	LT.	8658
			NO PASSING	
83+00		106+00	RT.	2300
83+10		115+65	LT.	3255
120+60		136+81	RT.	1621
132+80		148+50	LT.	1570
160+30		171+13	RT.	1083
168+30		171+13	LT.	283
				TOTAL 29,073

THE ABOVE QUANTITY IS SHOWN IN THE PAVEMENT MARKING-LINE 4" IN THE SUMMARY OF QUANTITIES.

DETAIL OF SOIL-CEMENT BASE COURSE



UTILITIES

MT. CARMEL PUBLIC UTILITY
316 MARKET STREET
MT. CARMEL, IL 62863
618-262-5151

NORRIS ELECTRIC COOP.
RT. 130 SOUTH
NEWTON, IL 62448
618-299-6101

RURAL WABASH WATER DISTRICT
P.O. BOX 55
LANCASTER, IL 62855
618-665-3311

VERIZON TELEPHONE CO.
225 EAST CHESTNUT
ONLEY, IL 62450
618-395-6191

J.U.L.I.E.
800-892-0123

NOTE: THE SIDEROAD ABOVE SHALL HAVE A-2 BITUMINOUS SURFACE TREATMENT ON A PROPOSED 9" SOIL-CEMENT BASE IN THE AREA SHOWN.