

INDEX TO SHEETS

Sheet No.	Description
1.	Cover Sheet
2.	Index to Sheets - General Notes - Legend - Summary of Quantities - P.I. Ties
3.	Schedule of Quantities
4.	Typical Sections
5.	Plan and Profile - Sta. 94+31.80 to 98+00.00
6.	Plan and Profile - Sta. 98+00.00 to 102+96.65
7.	Plan and Profile - Sta. 102+96.65 to 107+00.00
8.	Plan and Profile - Sta. 107+00.00 to 109+85.50
9.	Profile - Valerian Drive & East Mail Entrance
10.	Storm Sewer Profiles
11.	Pavement Jointing Plan
12.	Erosion Control Plan
13.	Pavement Marking Plan
14.	Traffic Control Plan
15.	Miscellaneous Details
16.	Right-of-Way Strip Map
17.	Cross Sections - Sta. 94+31.80 to 97+00.0
18.	Cross Sections - Sta. 97+50.0 to 99+63.14
19.	Cross Sections - Sta. 99+99.41 to 101+97.70
20.	Cross Sections - Sta. 102+50.0 to 104+99.81
21.	Cross Sections - Sta. 105+58.40 to 107+00.0
22.	Cross Sections - Sta. 107+50.0 to 108+61.50
23.	Cross Sections - Sta. 109+23.80 to 109+85.0 & Sidewalk Sections
24.	Cross Sections - Valerian Drive - Sta. 49+35.0 to 49+86.0
25.	Cross Sections - Mail Entrance - Sta. 59+11.34 to 59+73.48

GENERAL NOTES

This Section shall be constructed in accordance with the Plans, Standard Specifications for Road and Bridge Construction, adopted January 1, 2007, Supplemental Specifications, and the Special Provisions.

Any reference to the Illinois Division of Highway Standards shall mean the latest revision to said Standards.

At all locations where the Proposed P.C.C. Pavement is less than Two (2) feet in width, the pavement shall be poured Monolithic with the Proposed Standard Barrier Curb and Gutter.

All earth surfaces disturbed in conjunction of the new pavement and appurtenances shall be sodded in accordance with Section 252 and the Special Provisions.

All radii shown for the Standard Barrier Curb and Gutter are to edge of pavement.

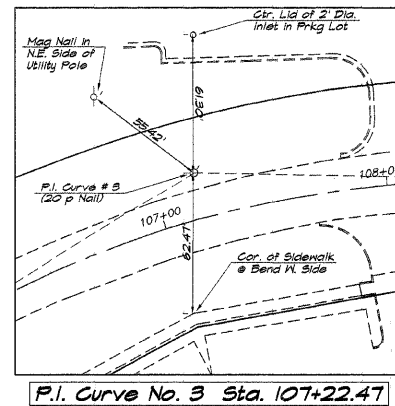
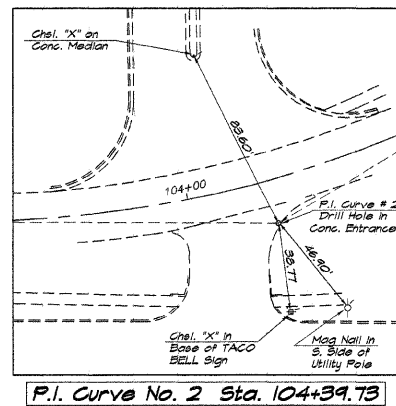
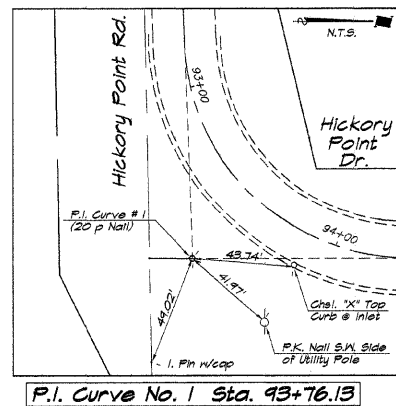
All radii shown for Driveways are to Face of Curb unless otherwise shown.

The location of the various underground utilities as shown on the plans are from information furnished by the various Utility Companies, record drawings, and field surveys. It is the Contractor's obligation to establish the actual location of the utilities. The Contractor shall use special care when conducting operations near the utilities so as to prevent damage to them.

The cost of removing any miscellaneous items located within the limits of this improvement and which have not been accounted for as a pay item shall be considered incidental to the contract.

All erosion control products furnished shall be specifically recommended by the manufacturer for the use specified in Section 280 of the Standard Specifications, BDE 800B7, the SWPPP and in the erosion control plan. Prior to the approval and use of the product, the contractor shall submit to the engineer a notarized certification by the producer stating the intended use of the product and that the physical properties required for this application are met or exceeded. The contractor shall provide manufacturer installation procedures to facilitate the engineer in construction inspection.

P.I. TIES



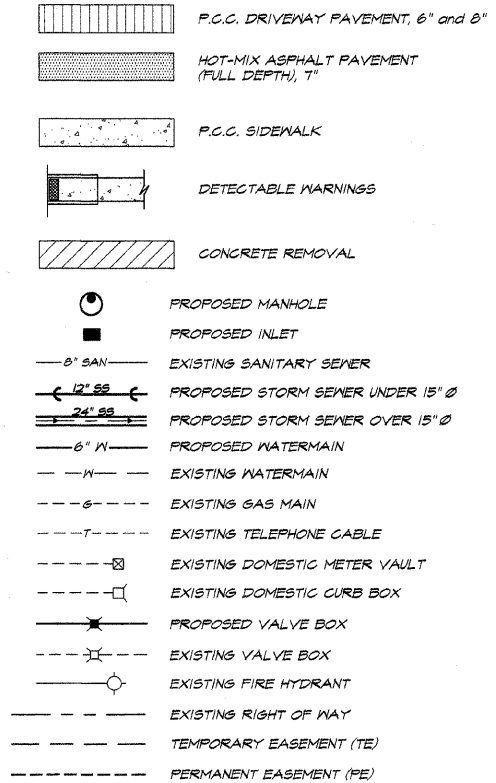
SUMMARY OF QUANTITIES

CODE	QUANTITY	UNIT	ITEM
20100110	6	UNIT	TREE REMOVAL (6 TO 15 UNIT DIAMETER)
20100210	38	UNIT	TREE REMOVAL (OVER 15 UNIT DIAMETER)
* 20200100	5320	CU YD	EARTH EXCAVATION
* 20800250	440	CU YD	TRENCH BACKFILL, SPECIAL
* 21300010	25	FOOT	EXPLORATION TRENCH, SPECIAL
* 25200100	5840	SQ YD	SODDING, SPECIAL
28000250	360	POUND	TEMPORARY EROSION CONTROL SEEDING
28000300	2	EACH	TEMPORARY DITCH CHECKS
28000400	960	FOOT	PERIMETER EROSION BARRIER
28000500	28	EACH	INLET AND PIPE PROTECTION
28100630	25	SQ YD	BROKEN CONCRETE DUMPED RIPRAP
33100500	7920	SQ YD	AGGREGATE BASE COURSE, TYPE A 6"
40200100	525	TON	AGGREGATE SURFACE COURSE, TYPE A
40701821	176	SQ YD	HOT-MIX ASPHALT PAVEMENT (FULL-DEPTH), 7"
40800010	18	GAL	BITUMINOUS MATERIALS (PRIME COAT)
* 42000300	6844	SQ YD	PORTLAND CEMENT CONCRETE PAVEMENT 8"
42001300	8462	SQ YD	PROTECTIVE COAT
42300200	125	SQ YD	PORTLAND CEMENT CONCRETE DRIVEWAY PAVEMENT 6 INCH
42300400	440	SQ YD	PORTLAND CEMENT CONCRETE DRIVEWAY PAVEMENT 8 INCH
42400100	8496	SQ FT	PORTLAND CEMENT CONCRETE SIDEWALK 4 INCH
42400410	910	SQ FT	PORTLAND CEMENT CONCRETE SIDEWALK 8 INCH
44000300	148	SQ FT	DETECTABLE WARNINGS
44000100	560	SQ YD	PAVEMENT REMOVAL
44000200	414	SQ YD	DRIVEWAY PAVEMENT REMOVAL
44000300	125	FOOT	CURB REMOVAL
44000500	511	FOOT	COMBINATION CURB AND GUTTER REMOVAL
44000600	945	SQ FT	SIDEWALK REMOVAL
44000310	447	SQ FT	MEDIAN REMOVAL
* 50104400	2	EACH	CONCRETE HEADWALL REMOVAL
* 50103210	363	FOOT	REMOVE EXISTING CULVERTS
54218669	1	EACH	PRECAST REINFORCED CONCRETE FLARED END SECTIONS 24"
* 550A2320	748	FOOT	STORM SEWER, RUBBER GASKET, CLASS A, TYPE 1 12"
* 550A2330	312	FOOT	STORM SEWER, RUBBER GASKET, CLASS A, TYPE 1 15"
* 550A2340	42	FOOT	STORM SEWER, RUBBER GASKET, CLASS A, TYPE 1 18"
* 550A2360	169	FOOT	STORM SEWER, RUBBER GASKET, CLASS A, TYPE 1 24"
* 550A2320	460	FOOT	STORM SEWER, RUBBER GASKET, CLASS A, TYPE 2 12"
* 56400300	1	EACH	FIRE HYDRANTS TO BE ADJUSTED
60218400	7	EACH	MANHOLES, TYPE A, 4'-DIAMETER, TYPE 1 FRAME, CLOSED LID
60222300	1	EACH	MANHOLES, SPECIAL WITH SPECIAL FRAME AND GRATE
* 60242500	1	EACH	INLETS, SPECIAL NO. 1
* 60242600	2	EACH	INLETS, SPECIAL NO. 2
* 60242800	2	EACH	INLETS, SPECIAL NO. 4
* 60242801	19	EACH	INLETS, SPECIAL NO. 5
* 60242802	3	EACH	INLETS, SPECIAL NO. 6
* 60260200	1	EACH	INLETS TO BE ADJUSTED (SPECIAL)
60280400	2	EACH	INLETS TO BE ADJUSTED WITH NEW TYPE 1 FRAME, CLOSED LID
* 60286800	6	EACH	VALVE BOXES TO BE REPLACED
60800080	3	EACH	REMOVING INLETS
60800605	52	FOOT	CONCRETE CURB, TYPE B
* 60803300	2	EACH	GUTTER OUTLET
60803800	56	FOOT	COMBINATION CONCRETE CURB AND GUTTER, TYPE B-6.12
60804400	3243	FOOT	COMBINATION CONCRETE CURB AND GUTTER, TYPE B-6.18
60818300	80	SQ FT	CONCRETE MEDIAN SURFACE, 4 INCH
66300105	12	TON	CALCIUM CHLORIDE APPLIED
67000300	4	CAL MO	ENGINEER'S FIELD OFFICE, TYPE B
67100100	1	L SUM	MOBILIZATION
* 70101700	1	L SUM	TRAFFIC CONTROL AND PROTECTION
Δ 78008200	240	SQ FT	POLYUREA PAVEMENT MARKING TYPE 1 - LETTERS AND SYMBOLS
Δ 78008210	3320	FOOT	POLYUREA PAVEMENT MARKING TYPE 1 - LINE 4"
Δ 78008250	207	FOOT	POLYUREA PAVEMENT MARKING TYPE 1 - LINE 12"
* XX003424	5	EACH	CONNECTION TO EXISTING STRUCTURE
* XX004188	80	SQ FT	REMOVE AND RE-ERECT SEGMENTAL BLOCK RETAINING WALL
* SPECIAL ITEMS			
Δ SPECIALTY ITEMS			

ROUTE NO.	SECTION	CITY	TOTAL SHEETS	SHEET NO.
FAU 7356	06-00007-00-RP	FORSYTH	25	2
FED. ROAD DIST. NO.		ILLINOIS	PROJECT M-5169 (041)	

CONTRACT NUMBER 95564

LEGEND



REVISIONS

NO.	BY	DATE
1	MPF	11-15-09

BAINBRIDGE & ASSOCIATES, INC.
Consulting Engineers
1470 SOUTH TAYLORVILLE ROAD
DECATUR, ILLINOIS 62526
Illinois License 184-001226

DESIGNED: MPF
DRAWN: Les Jenkins
FIELD BOOK: 000

SCALE: N.T.S.
DATE: Oct. 2007
JOB NO.: 07-078

VILLAGE OF FORSYTH, ILLINOIS
HICKORY POINT DRIVE IMPROVEMENTS

INDEX OF SHEETS - SUMMARY OF QUANTITIES - LEGEND
GENERAL NOTES - P.I. TIES

SHEET NO. **2** OF 25